

NO. 13.
F A T E.

(FOR TRAGIC, INTENSE AND HEAVY SCENES.)

ALBERT W. KETELBEY.

Andante pesante.

Solemnly.

Sul G

ff
Sostenuto

Pathétique.

Fine ad lib.

D.C. ad lib.

BOSWORTH'S LOOSE LEAF
FILM-PLAY MUSIC SERIES, BOOK 3.

2nd VIOLIN.

NO 13.

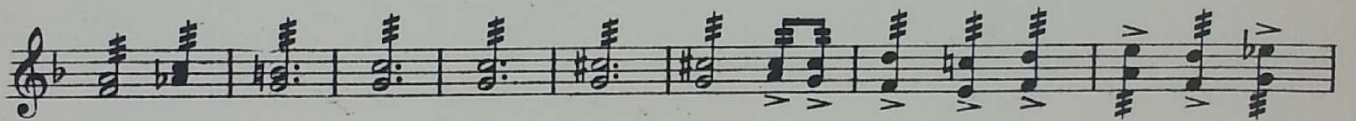
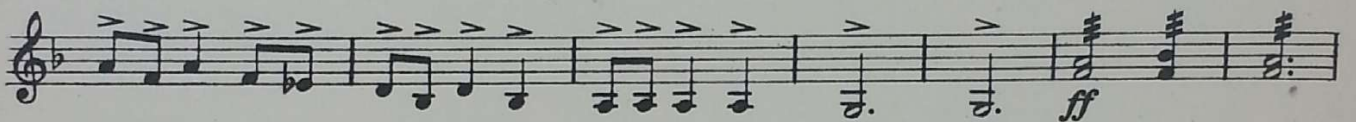
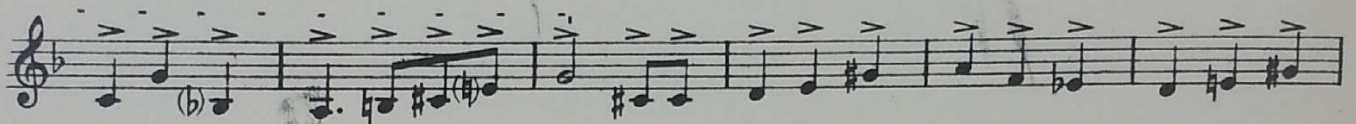
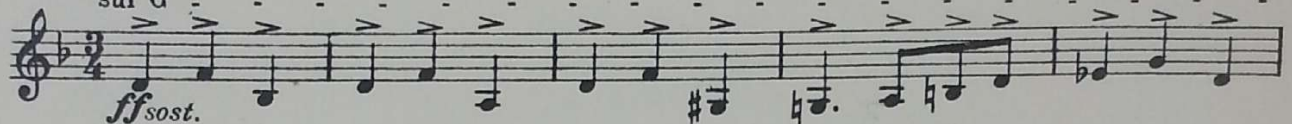
F A T E.

(FOR TRAGIC, INTENSE AND HEAVY SCENES.)

ALBERT W. KETËLBEY

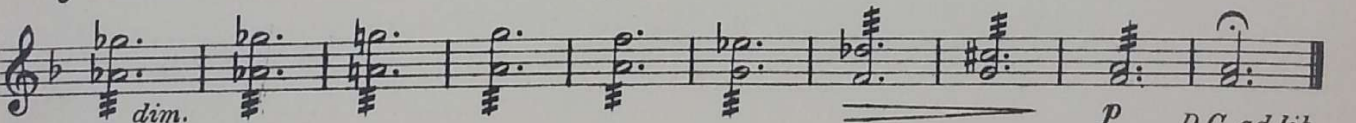
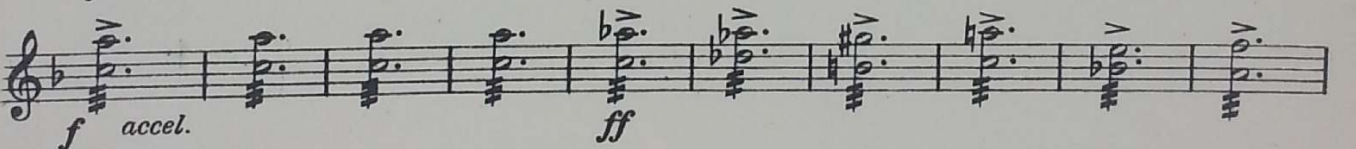
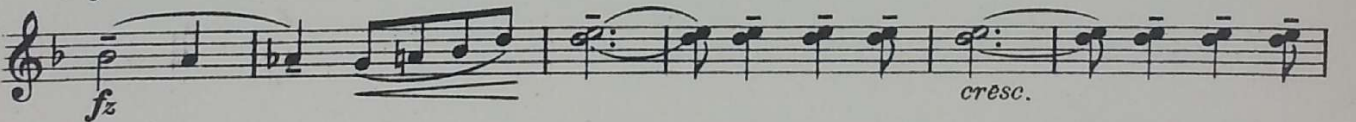
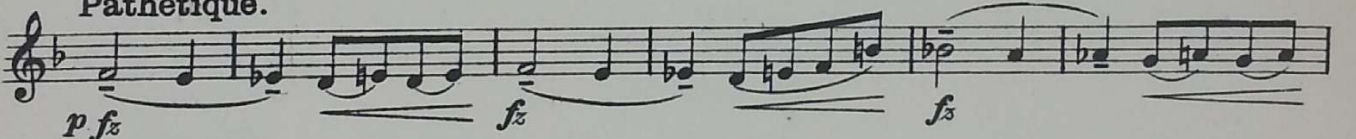
Andante pesante.

Solemnly
sul G



Fine ad lib.

Pathétique.



P D.C. ad lib.

VIOLA.

BOSWORTH'S LOOSE LEAF
FILM-PLAY MUSIC SERIES, BOOK 3.

№13.

F A T E.

(FOR TRAGIC, INTENSE AND HEAVY SCENES.)

ALBERT W. KETÉLBEY.

Andante pesante.

sul G *Solemnly*

ff sost.

ff

Fine ad lib.

Pathétique.

p fz *fz* *fz*

fz *cresc.* *f accel.*

ff

dim. *p* *D.C. ad lib.*

CELLO.

BOSWORTH'S LOOSE LEAF
FILM-PLAY MUSIC SERIES, BOOK 3.

NO. 13.

F A T E.

(FOR TRAGIC, INTENSE AND HEAVY SCENES.)

ALBERT W. KETÉLBEY.

Andante pesante.

Solemnly

The first section of the score consists of five staves of music. It begins with a bass clef, a key signature of one flat (B-flat), and a 2/4 time signature. The tempo is marked 'Andante pesante' and 'Solemnly'. The first staff starts with a dynamic marking of *ff* *sost.* and features a series of eighth notes with accents. The second staff continues with similar rhythmic patterns. The third staff has a *ff* marking. The fourth and fifth staves show more complex rhythmic figures and chordal textures.

Pathétique.

Fine ad lib.

The second section of the score consists of five staves of music. It begins with a bass clef, a key signature of one flat, and a 2/4 time signature. The tempo is marked 'Pathétique'. The first staff starts with a dynamic marking of *pf* and features a series of notes with accents. The second staff has a *ff* marking and a 'Solo' marking. The third staff has a *ff* marking and a 'cresc.' marking. The fourth staff has a *ff* marking. The fifth staff has a *p* marking and a 'Solo' marking. The section concludes with a 'D. C. ad lib.' marking.

BASS.

BOSWORTH'S LOOSE LEAF
FILM-PLAY MUSIC SERIES, BOOK 3.

NO 13.

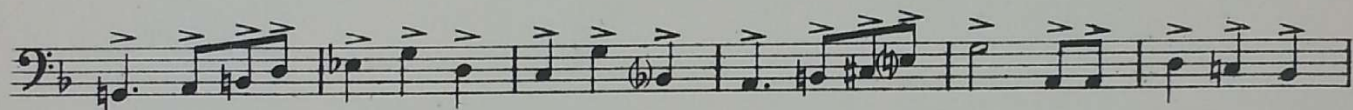
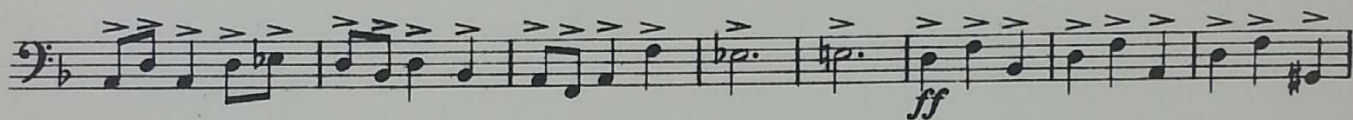
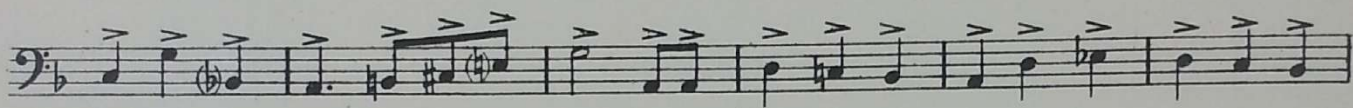
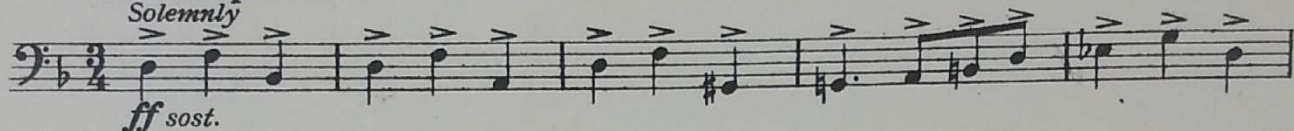
F A T E.

(FOR TRAGIC, INTENSE AND HEAVY SCENES.)

ALBERT W. KETÉLBEY.

Andante pesante.

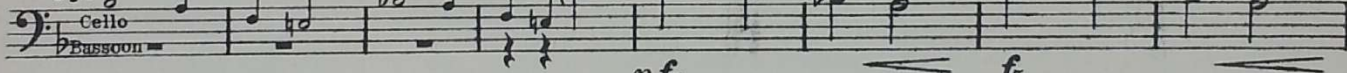
Solemnly



Fine ad lib.

Pathétique.

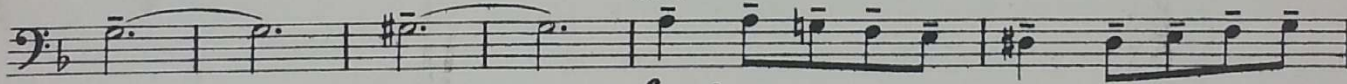
pfz



pfz

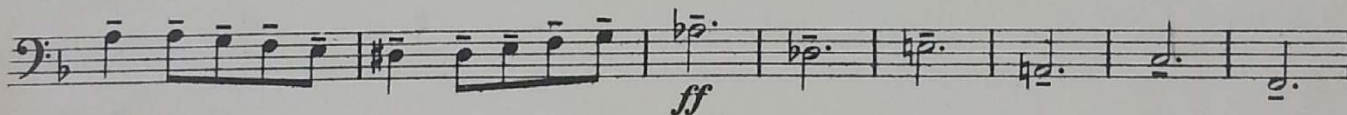
fz

Solo



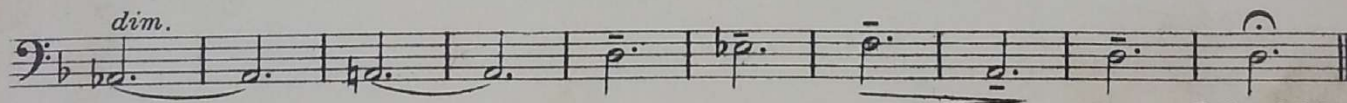
cresc.

f accel.



ff

dim.



p

D.C. ad lib.

FLUTE.

BOSWORTH'S LOOSE LEAF
FILM-PLAY MUSIC SERIES, BOOK 3.

Nº 13.

F A T E.

(FOR TRAGIC, INTENSE AND HEAVY SCENES.)

ALBERT W. KETÈLBÉY.

Andante pesante.

Solemnly

Pathétique.

1st B \flat CLARINET.

BOSWORTH'S LOOSE LEAF
FILM-PLAY MUSIC SERIES, BOOK 3.

N \circ 13.
F A T E.

(FOR TRAGIC, INTENSE AND HEAVY SCENES.)

ALBERT W. KETÉLBEY.

Andante pesante.

solemnly

ff sost.

The first section of the score consists of five staves of music. It begins with a treble clef, a key signature of one sharp (F#), and a 3/4 time signature. The music is characterized by a slow, heavy feel with a solemn character. The notation includes various rhythmic values such as eighth and sixteenth notes, often with accents, and some dotted notes. The dynamics start with *ff sost.* and end with *ff*.

Fine ad lib.

Pathétique.

p

cresc.

8^{va} if no Oboe

f accel.

ff fz marcato

fz

The second section of the score consists of five staves of music. It begins with a treble clef, a key signature of one sharp (F#), and a 3/4 time signature. The music is more expressive and dramatic. The notation includes various rhythmic values such as eighth and sixteenth notes, often with accents, and some dotted notes. The dynamics start with *p*, then *f accel.*, *ff fz marcato*, *fz*, *dim.*, and *p*. There are also markings for *8^{va} if no Oboe* and *D. C. ad lib.*

D. C. ad lib.

1st B^b CORNET.

BOSWORTH'S LOOSE LEAF
FILM - PLAY MUSIC SERIES, BOOK 3.

NO 13.

F A T E.

(FOR TRAGIC, INTENSE AND HEAVY SCENES.)

Andante pesante.

ALBERT W. KETÉLBEY.

Solemnly
Horns
ff sost.

Oboe Clarinets

Solo
ff sost.

Pathétique.

8 *p* *cresc.* *f* Solo

Trombones *8va* lower *ff*

pp subito *ppp* D.C. ad lib.

2nd B^b CORNET.

BOSWORTH'S LOOSE LEAF
FILM-PLAY MUSIC SERIES, BOOK 3.

NO 13.

F A T E.

(FOR TRAGIC, INTENSE AND HEAVY SCENES.)

Andante pesante.

ALBERT W. KETÈLBEY.

Solemnly
Horns
ff sost.

Oboe Clarinets

Solo
ff sost.

Fine ad lib.

Pathétique.
8 *p* *cresc.* Solo *f accel.*

Trombones 8^{va} lower *ff*

pp subito *ppp* D.C. ad lib.

3rd TROMBONE.

BOSWORTH'S LOOSE LEAF
FILM - PLAY MUSIC SERIES, BOOK 3.

NO 13.
F A T E.

(FOR TRAGIC, INTENSE AND HEAVY SCENES.)

Andante pesante.

ALBERT W. KETÉLBEY.

Solemnly
Cello - Bassoon

ff sost.

Solo
ff

Fine ad lib.

Pathétique.

Play 8^{va} if no 1st and

8 *p* *cresc.* *f*

2nd Trombone

ff *pp subito*

ppp *D.C. ad lib.*

