

135  
112



# Concert Orchestral Edition

## ATONEMENT

J. S. ZAMECNIK

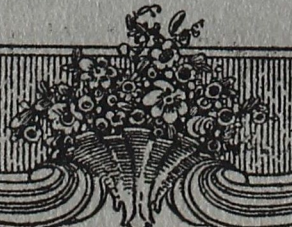
**SMALL ORCHESTRA** consists of First and Second Violins, Viola, Cello, Bass, Flute, First Clarinet, First and Second Cornets, Trombone, Drums and Piano.  
**FULL ORCHESTRA** consists of First and Second Violins, Viola, Cello, Bass, Flute, First and Second Clarinets, First and Second Cornets, Trombone, Oboe, Bassoon, Horns, Drums, Piano and extra First Violin.

		Small Orchestra and Piano	Full Orchestra and Piano	Extra Parts — Violin Obbligato	Piano Accomp. — Organ or Harmonium
1. Atonement .....	By J. S. Zamecnik	\$1.35	\$1.60	\$ .15	\$ .30
2. The Dancer of Navarre .....	By J. S. Zamecnik	1.50	1.75	.20	.40
3. Ecstasy .....	By J. S. Zamecnik	1.35	1.60	.15	.30
4. Bon Vivant .....	By J. S. Zamecnik	1.50	1.75	.20	.40
5. Egyptia .....	By J. S. Zamecnik	1.50	1.75	.20	.40
6. A Dutch Windmill .....	By J. S. Zamecnik	1.25	1.50	.15	.30

*N. B.—Violin Obbligato and Organ (or Harmonium) Parts to Concert Orchestral Edition—See Price List Above.*

**SAM FOX PUBLISHING COMPANY**  
**CLEVELAND, OHIO, U. S. A.**

European Representatives—BOSWORTH & CO., London, Leipzig, Vienna, Zurich, Paris



Property of  
Grand Opera House  
Dubuque, Iowa.

# ATONEMENT

Piano.

J. S. ZAMECNIK.

Andante. Violin.

*p*

Violin.

*mf*

*p*

Fl. & Cl.

Poco piu mosso.

*p*

Violin.

*mf* molto espressione.

*f* appassionato.

*f* poco meno mosso.

ten.  
ten.  
largamente.  
a tempo.

This system contains the first six measures of the piece. The right hand features a melodic line with slurs and ties. The left hand provides harmonic support with chords and moving bass lines. Performance markings include 'ten.' (tension) above the first and second measures, 'largamente.' (largely) above the third measure, and 'a tempo.' (at tempo) above the fourth measure.

mf poco agitato e cres- cen- do.  
f  
largamente.

This system contains measures 7 through 12. The right hand continues the melodic development. The left hand has a more active bass line. Performance markings include 'mf poco agitato e cres- cen- do.' (moderato-forte, slightly agitated and crescendo) below the first measure, 'f' (forte) below the fifth measure, and 'largamente.' (largely) above the sixth measure.

ten.  
rit.  
ten.  
Grandioso.  
ff  
mf

This system contains measures 13 through 18. The right hand has a more rhythmic and intense character. The left hand features a steady bass line with some chords. Performance markings include 'ten.' above the first measure, 'rit.' (ritardando) below the second measure, 'ten.' below the third measure, 'Grandioso.' (grandioso) above the fourth measure, 'ff' (fortissimo) below the fourth measure, and 'mf' (moderato-forte) below the eighth measure.

tranquillo.  
p

This system contains measures 19 through 24. The right hand has a more melodic and flowing character. The left hand has a steady bass line. Performance markings include 'tranquillo.' (tranquillo) above the fifth measure and 'p' (piano) below the fifth measure.

# Piano

Tempo I

Cello

*sempre p*

Detailed description: This system contains the first five measures of the score. The Cello part (top staff) begins with a whole note chord, followed by a melodic line of eighth notes. The Piano accompaniment (bottom two staves) features a steady eighth-note bass line and a treble staff with chords and arpeggiated figures. The dynamic marking *sempre p* is placed between the staves.

Detailed description: This system contains measures 6 through 10. The Cello part continues its melodic line. The Piano accompaniment maintains its rhythmic pattern with some harmonic shifts in the treble staff.

Clar.

Detailed description: This system contains measures 11 through 15. The Clarinet part (top staff) enters with a melodic line. The Piano accompaniment continues with chords and arpeggios. A fermata is present over the final measure of the Clarinet part.

Fl.

Str.

*poco - a - poco - dim -*

*pp*

Detailed description: This system contains measures 16 through 20. The Flute part (top staff) has a melodic line. The Strings part (middle staff) has a simple accompaniment. The Piano accompaniment (bottom two staves) features a bass line and chords. The dynamic marking *pp* is present. The instruction *poco - a - poco - dim -* spans across the strings and piano parts.

# ATONEMENT

1st. Cornet in B $\flat$

J. S. ZAMECNIK.

Andante.

11

2d. Cl.  
or Ob.

*mf*

Poco piu mosso.

8

Horn.

*mf* molto espress.

appassionato.

*f* poco meno mosso.

*ten.*

*largamente. atempo.*

4

*f largamente. rit.*

*ten.*

Grandioso.

*ff*

10

Tempo I.

12

7

Horn.

*pp*

# ATONEMENT

Flute.

J. S. ZAMECNIK.

Andante. **11** *mf* **2** *p* Poco piu mosso.

*mf* molto espressione.

*f* appassionato. poco meno mosso. *ten.* largamente. a tempo.

Oboe. *mf* poco agitato e cres cen do. *f* largamente.

*ten.* Grandioso. *ff* **6**

Tempo I. *p* *sempre p*

*p* poco a poco dim. **1**

# ATONEMENT

2nd. Cornet in B<sup>b</sup>

J. S. ZAMECNIK.

Andante.

Poco piu mosso.

15 8 Horn.  
*mf*  
*molto espress.*

*appassionato.*

*f* *poco meno mosso.* *ten. a tempo.* *largamente.* *ten. a tempo.* 4

*ten.* Grandioso.

*f* *largamente.* *rit.* *ff* *ten.* 10

Tempo I.

12 7 Horn.  
*pp*

# ATONEMENT

Cello.

J. S. ZAMECNIK.

Andante.

*p*

*mf* *p*

*p*

*mf* *f poco meno mosso.*

*ten.* *a tempo.* *mf poco agitato e cres-*

*largamente.* *molto rit. ff Grandioso.*

*mf* *p tranquillo.*

Tempo I.

*sempre p*

*poco a poco dim.*



Property of  
Grand Opera House  
Dubuque, Iowa.

# ATONEMENT

1st. Violin.

J. S. ZAMECNIK.

Andante.

Strings. *p*

Cello.

Bass. *mf* *p*

Wood.

Fl. & Cl. *p Poco piu mosso.*

Cello and Viola. *mf molto espressione.*

Horn. *f appassionato.* *poco meno mosso.*

ten. *ten.*

*largamente.* *a tempo.*

Copyright MCMXVII by Sam Fox Pub, Co, Cleveland, O.  
International Copyright Secured

Copyright for Europe and British Empire (excluding Canada) Bosworth & Co., London, Leipzig, Vienna, Zurich, Paris.

# 1st. Violin.

Cello & Bassoon.

*mf poco agitato e cres - cen - do*

Grandioso.

*f largamente.*

*rit. ten. Tromb. ff*

Cello.

*mf vol.*

Wood & Str.

*p tranquillo.*

Tempo I.

Cello.

*con sordino. Sua sempre p div.*

Cl. Fl.

*poco a poco dim pp*

Viola.

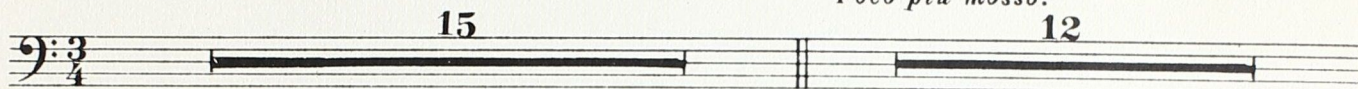
# ATONEMENT

Tympani in C-G

J. S. ZAMECNIK.

Andante.

Poco piu mosso.



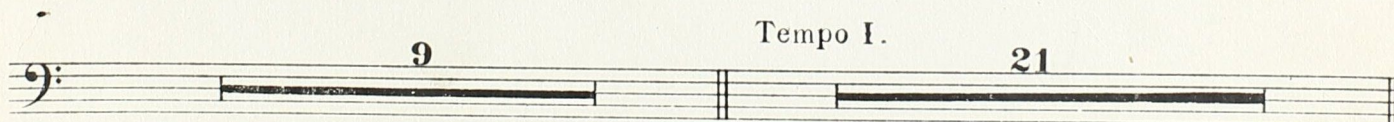
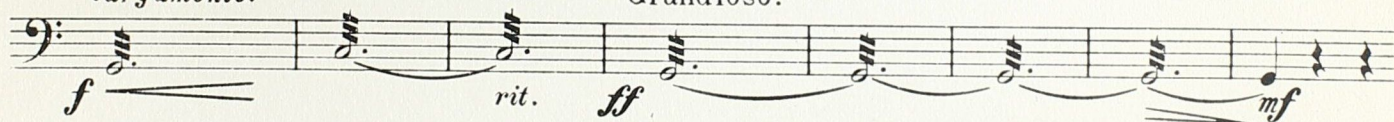
*appassionato.*



*largamente.*

*ten.*

Grandioso.



# ATONEMENT

1st. Clarinet in B $\flat$

J. S. ZAMECNIK

Andante.  
2d.V.

*p* *mf* *p*

Poco piu mosso.

*p*

*mf* molto espress. *f* appassionato. poco meno mosso.

*mf* largamente. *ten.* *a tempo.* *mf* poco agitato e cres-

--- cen --- do --- largamente.

--- rit. *ten.* Grandioso. *ff*

*mf*

tranquillo. *p*

Tempo I.

*p* sempre.

SOLO. 2d.V.

poco a poco dim. *pp*

# ATONEMENT

2nd. Violin.

J. S. ZAMECNIK.

Andante.

*p* *mf*

Poco piu mosso.

*p*

*mf* molto espressione.

*mf* molto espressione.

appassionato.

*f*

poco meno mosso.

*f*

ten. a tempo.

*f*

largamente.

*f*

largamente.

*f*

poco agitato e cres cen do.

*mf* poco agitato e cres cen do.

rit. ten. Grandioso.

*ff*

tranquillo. 1

*p*

Tempo I. con sordino.

*semprep*

poco a poco dim.

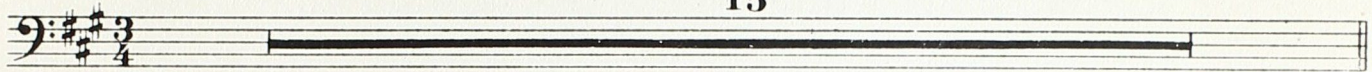
# ATONEMENT

Trombone.

J. S. ZAMECNIK.

Andante.

15

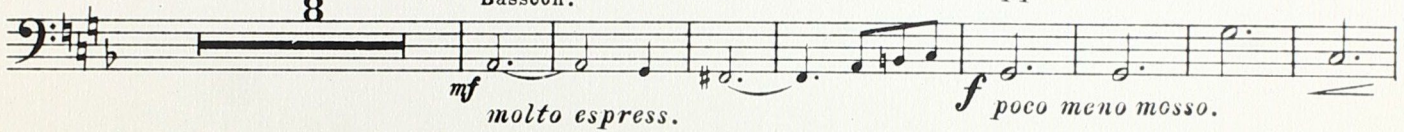


Poco piu mosso.

8

Bassoon.

appassionato.

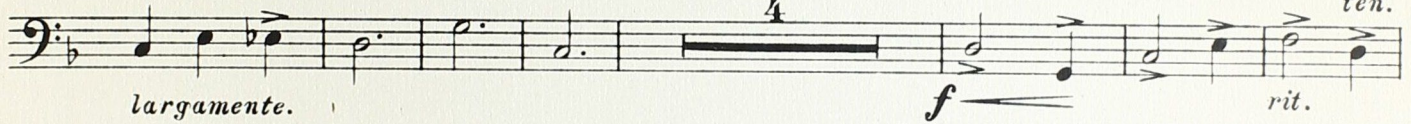


ten.

largamente.

4

ten.



Grandioso.

9

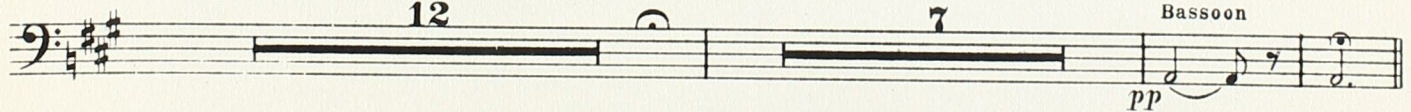


Tempo I.

12

7

Bassoon



# ATONEMENT

Bass.

J. S. ZAMECNIK.

Andante.

*p*

*mf* *p*

Poco piu mosso.

*p*

*mf molto espress.* *f appassionato.*  
*f poco meno mosso.*

*ten.*

*largamente. a tempo.* *mf poco agitato e cres - cen - do.*

*ten.* Grandioso.

*f largamente* *rit.* *ff* *mf*

1

*p tranquillo.*

Tempo I.

*sempre p*

1

2

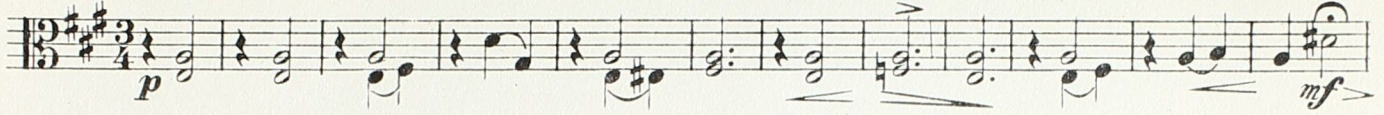
*poco a poco dim.* *pp*

# ATONEMENT

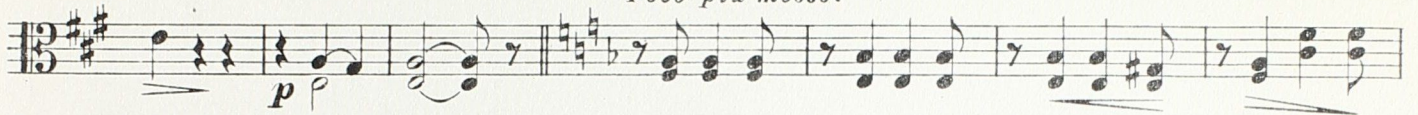
Viola.

J. S. ZAMECNIK.

Andante.



Poco piu mosso.



molto espress.

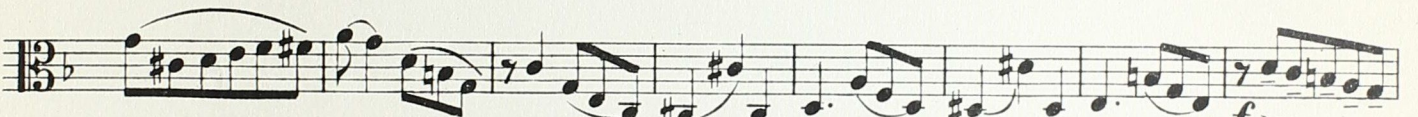


appassionato.



poco meno mosso.

largamente.



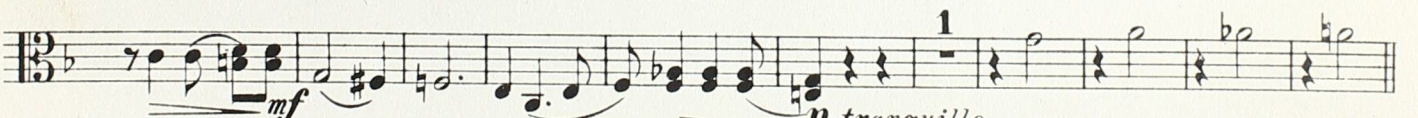
atempo.

*mf* poco agitato e cres cen do.

*f* larg.



Grandioso.



tranquillo.

Tempo I.

con sordino.

