

REX INGRAM'S
 Production of
BLASCO IBANEZ'
 famous novel
MARE NOSTRUM

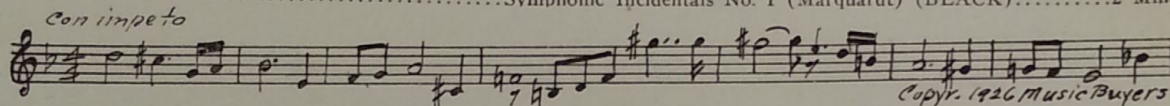
with
ALICE TERRY and
ANTONIO MORENO
 Scenario by Willis Goldbeck
 Music compiled by Ernst Luz

A METRO-GOLDWYN-MAYER PICTURE

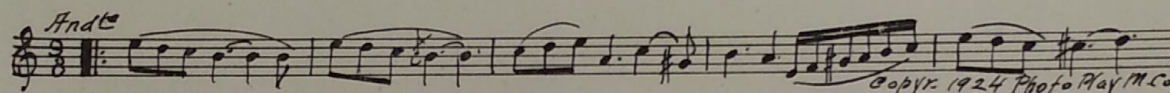
Length of film 10 reels (9727 feet)

Maximum projection time 1 hour, 55 Minutes

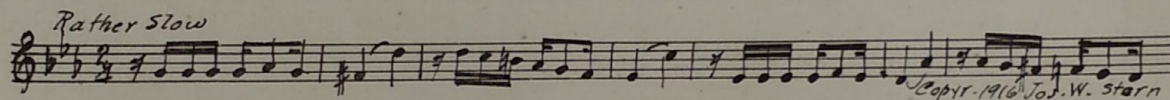
1 AT SCREENINGSymphonic Incidentals No. 1 (Marquardt) (BLACK).....2 Min.



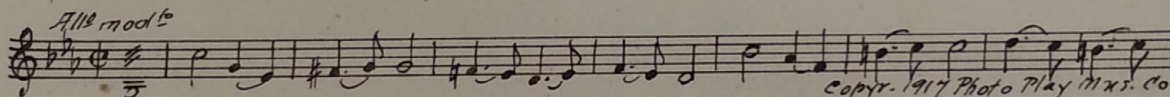
2 (Title) UPON ITS BOSOMPathos from "Incid. Miniatures No. 2" (Schertzing).....½ Min.



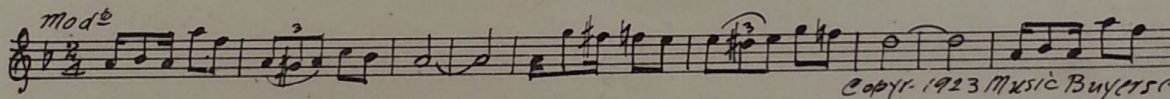
3 (Title) A FISHING TOWNLu Lu-Fado (Milano) (BROWN)¾ Min.



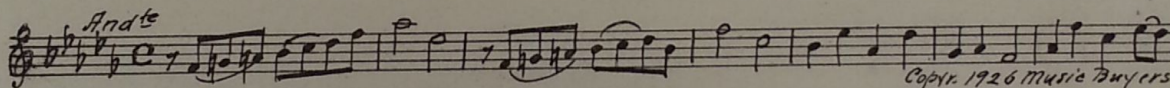
4 (Title) HERE FOR CENTURIESHeavy Dramatic Pathetic No. 1 (Wagner).....1 Min.



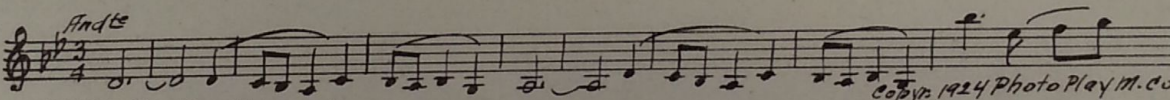
5 (Action) OLD MAN STARTS TO LAUGH AT BOYLa Clavel (Kempinski)1½ Min.



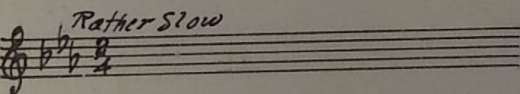
6 (Action) SERVANT BRINGS DRINKS INTO ROOM.....Symphonic Color Classic No. 7 (Kempinski) (DK. GREEN).1¾ Min.



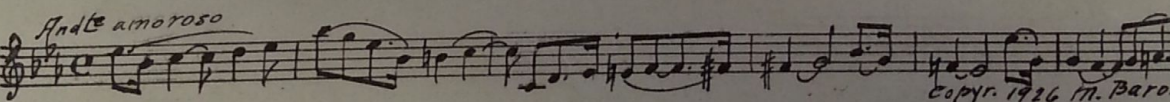
7 (Action) SERVANT MOTIONS OLD MAN TO STOP....Joy Through Tears (Schertzing)2½ Min.



8 (Title) THE YEARS WITNESSEDRepeat No. 3 (BROWN)¾ Min.



9 (Action) SHIP CABIN—INTERIOR SCENEUne Pensee d'Amour (Borch)2¼ Min.



NOTE: Play first 45 bars only.

- 10 (Title) BARCELONA Barcelona (Evans) 1 Min.

Fox Trot

Copyr. 1926 Leo Feist

- 11 (Action) BOY WITH BAG ON BACK GOES THROUGH DOOR AT THIRD ATTEMPT Reverie d'Automne (Golden) 1 Min.

Andte

Copyr. 1921 Photo Play M. Co.

- 12 (Action) CAPTAIN GREETES SERVANTS Incid. Symphony No. 34 (Kempinski) (LIGHT BLUE)..... ½ Min.

All^o

Copyr. 1926 Photo Play M. Co.

- 13 (Action) INTERIOR SCENE Repeat No. 6 (DARK GREEN) 1 Min.

Andte

- 14 (Action) MAN ENTERS HOUSE—INTERRUPTS CAPTAIN AND WIFE Repeat No. 12 (LIGHT BLUE) 1 Min.

All^o

- 15 (Title) NAPLES, PORT OF ITALY Moonlight in Naples (Marquardt) 2¼ Min.

All^o

Copyr. 1925 Music Buyers Corp.

- 16 (Action) CAPTAIN AND CARETAKER SEPARATE AT DOOR TO RUINS Symphonic Color Classic No. 7 (Kempinski) (RED)..... ½ Min.

Grave

Copyr. 1926 Music Buyers Corp.

- 17 (Action) OLD LADY SITS ON SEAT MADE WITH CANE Repeat No. 6 (DARK GREEN) 1½ Min.

Andte

- 18 (Title) HE IS SPANISH Repeat No. 16 (RED) 1½ Min.

Grave

- 19 (Title) PAESTUMS Dance of The Sylphs (Marquardt) 1 Min.

Waltz

Copyr. 1926 Music Buyers Corp.

- 20 (Action) OLD LADY SITS ON CANE Incid. Symphony No. 33 (Kempinski)..... 1 Min.

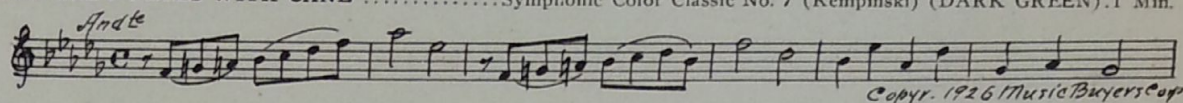
Andte

Copyr. 1926 Photo Play Mus. Co.

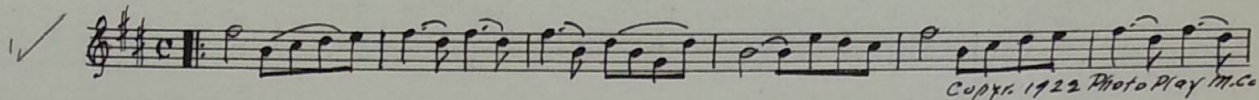
- 21 (Action) ALICE TERRY STOPS CAPTAIN FROM STRIKING SNAKE Repeat No. 20 "Incid. Symphony No. 33" ½ Min.

Andte

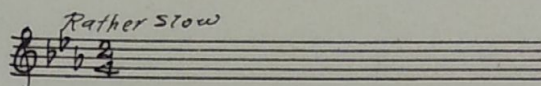
22 (Action) OLD LADY FALLS WITH CANESymphonic Color Classic No. 7 (Kempinski) (DARK GREEN).1 Min.



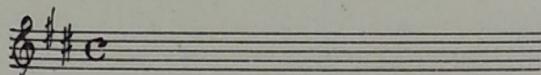
23 (Title) NONE OF YOUR CHILD'S PLAYZareda (Tschaiikowsky)1½ Min.



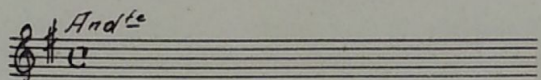
24 (Title) FOR TWO WEEKS Repeat No. 3 (BROWN)¾ Min



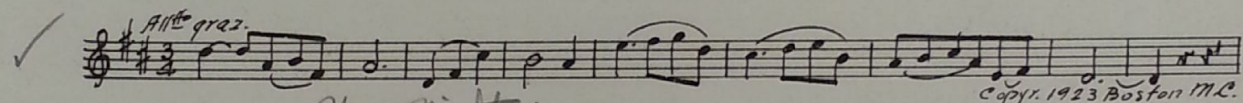
25 (Action) TONI WALKS INTO SHIP CABIN TO COOK. Repeat No. 23 "Zareda"1½ Min.



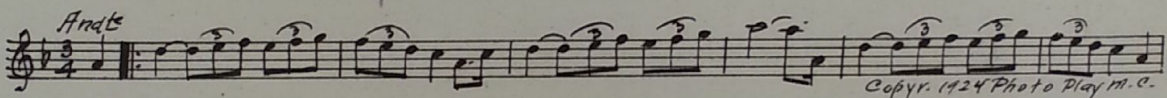
26 (Action) ALICE TERRY GIVES MONEY TO ATTENDANT Repeat No. 20 "Incid. Symphony No. 33"2¾ Min.



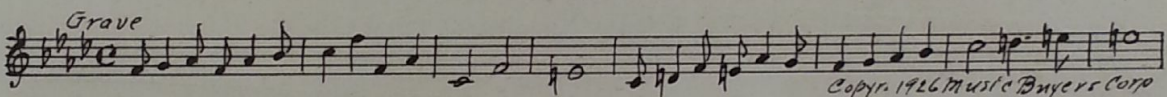
27 (Action) ALICE TERRY TURNS TO CAPTAINSerenade (Toselli) (WHITE)1 Min.



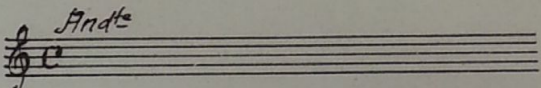
28 (Title) WEEKS IN WHICH *It is night*Tears from "Incid. Miniatures No. 2" (Schertzing)1½ Min.



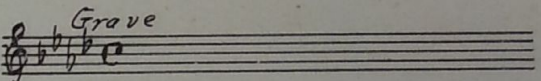
NOTE: Play to end of second long subtitle and segue.
SEGUESymphonic Color Classic No. 7 (Kempinski) (RED).



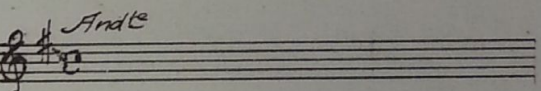
29 (Action) FADE-OUT OF OLD LADY PLOTTER.....Repeat No. 11 "Reverie d'Automne"1¾ Min.



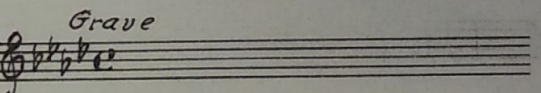
30 (Action) OLD LADY TAKES HOLD OF ALICE TERRY'S SHOULDERS Repeat No. 16 (RED)2¾ Min.



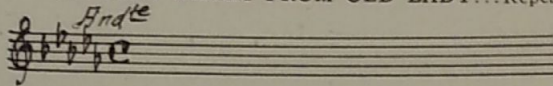
31 (Title) THE RENDEZVOUS Repeat No. 20 "Incid. Symphony No. 33".....1½ Min.



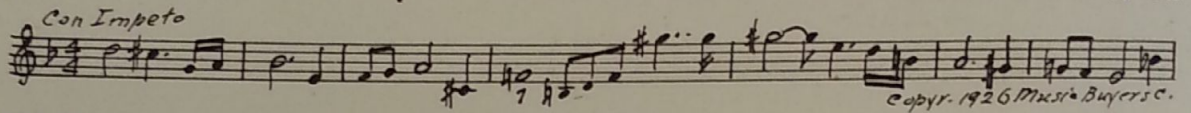
32 (Action) ALICE TERRY ENTERS ROOM Repeat No. 16 (RED)½ Min.



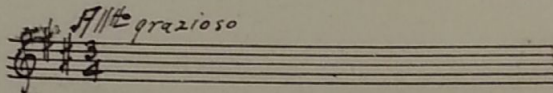
- 33 (Action) MAN WALKS ON SCREEN AFTER CAPTAIN WALKS FROM OLD LADY...Repeat No. 22 (DARK GREEN)1½ Min.



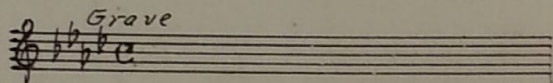
- 34 (Title) IT IS AS I FEARED.....Symphonic Incidentals No. 1 (Marquardt) (BLACK).....2¾ Min.



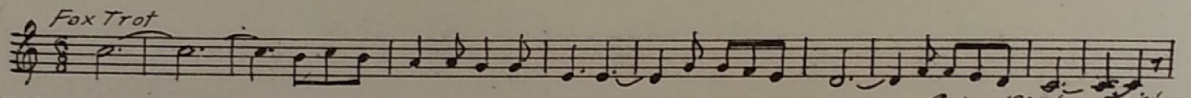
- 35 (Title) ASK OF MERepeat No. 27 (WHITE)¼ Min.



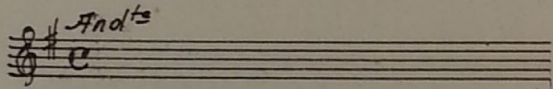
- 36 (Action) OLD LADY INTERRUPTS LOVERS.....Repeat No. 16 (RED)2 Min.



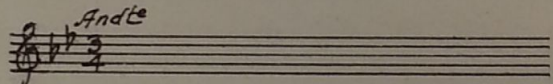
- 37 (Title) BARCELONABarcelona (Evans)1 Min



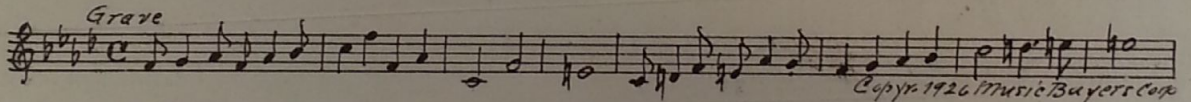
- 38 (Action) MAN IN DOORWAY TO ROOM AFTER FAT MAN GETS OUT OF CARRIAGERepeat No. 20 "Incid. Symphony No. 33"3 Min.



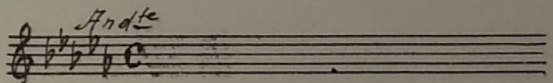
- 39 (Action) FADE-OUT AFTER SON GIVEN ADDRESS....Repeat No. 7 "Joy Through Tears" (1st strain only)1 Min.



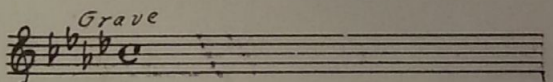
- 40 (Title) GERMAN DIPLOMACYSymphonic Color Classic No. 7 (Kempinski) (RED) 1¼ Min.



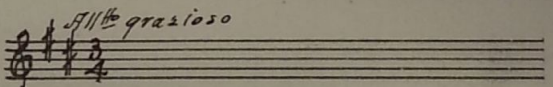
- 41 (Title) MEN WHO ARE DRUGGED WITH LOVE.....Repeat No. 22 (DARK GREEN)1 Min.



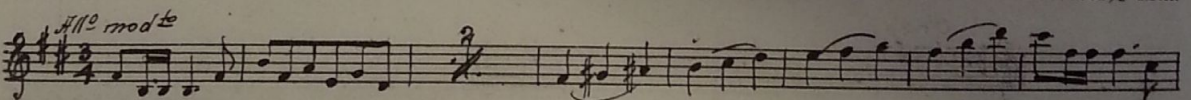
- 42 (Action) ROOM SHOWING PLOTTERSRepeat No. 40 (RED)¾ Min.



- 43 (Action) ALICE TERRY CLOSES DOOR IN MAN'S FACERepeat No. 27 (WHITE)1½ Min.



- 44 (Action) CAPTAIN WALKS FROM ALICE TERRY.....Incid. Symphony No. 31 (Kempinski)2½ Min.



45 (Action) MEN SHAKE HANDS AND WALK FROM TABLE Repeat No. 27 (WHITE) 1 1/4 Min.

All^o grazioso

46 (Title) THREE DAYS OUT Repeat No. 44 "Incid. Symphony No. 31" 1 1/4 Min.

All^o mod^o

47 (Action) SAILS OF SHIP COMING DOWN.....A. B. C. Dram. Set No. 19 A1 (Luz) 1 Min.

Adagio maestoso

48 (Action) OFFICER HAS ON GERMAN CAP.....Incid. Symphony No. 26 (Schoenfeld) 1 1/4 Min.

Mod^o

49 (Title) ESTEBAN'S SEARCH FOR HIS FATHERLa Clavel (Kempinski) 1 1/4 Min.

Mod^o

NOTE: Play once and segue.
SEGUE

Grave

50 (Title) NAPLES AGAIN Italian Royal March (Gabetti) 3/4 Min.

Marcia

51 (Action) CAPTAIN ENTERS HOUSEIncid. Symphony No. 34 (Kempinski) (LIGHT BLUE) 3/4 Min.

All^o

52 (Action) CAPTAIN COMES BACK TO WOMAN SWEEPINGPathos from "Incid. Miniatures No. 2" (Schertzing) 1 1/4 Min.

And^{te}

53 (Title) ULYSSES HAD TAKEN PASSAGE.....Repeat No. 51 (LIGHT BLUE) 1 1/4 Min.

All^o

54 (Action) TORPEDO EXPLOSIONThe Meeting from "Aphrodite Suite" (Jebe) 1 1/2 Min.

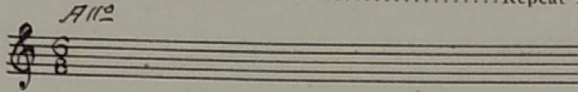
And^{te}

NOTE: Do not play too fast.

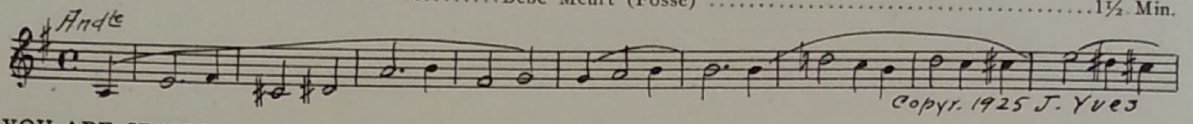
55 (Action) BOAT SINKINGHeavy Dramatic Pathetic No. 1 (Wagner) 3/4 Min.

All^o mod^o

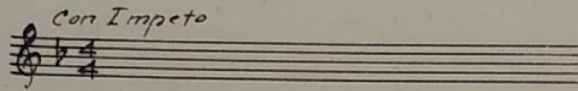
56 (Action) SUBMARINE SINKS Repeat No. 51 (LIGHT BLUE) 2 Min.



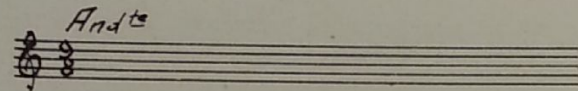
57 (Action) RESCUED PEOPLE WALK ON SHIP FROM LITTLE BOAT Bebe Meurt (Fosse) 1½ Min.



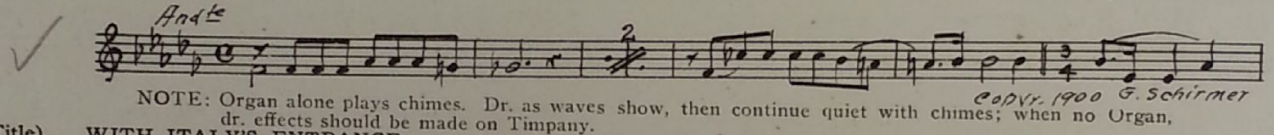
58 (Title) YOU ARE SPANISH Repeat No. 34 (BLACK) 1 Min.



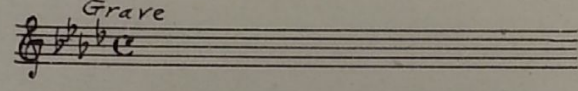
59 (Action) TORPEDO EXPLOSION Repeat No. 52 "Pathos" ½ Min.



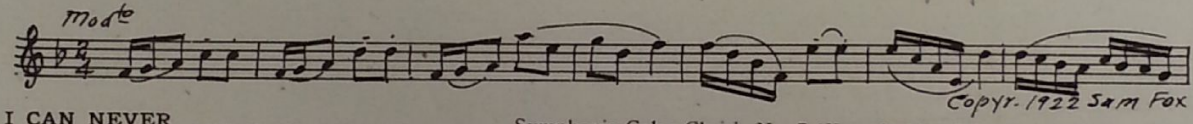
60 (Title) AFTER THE DEATH OF HER SON The Rosary (Nevin) 1¼ Min.



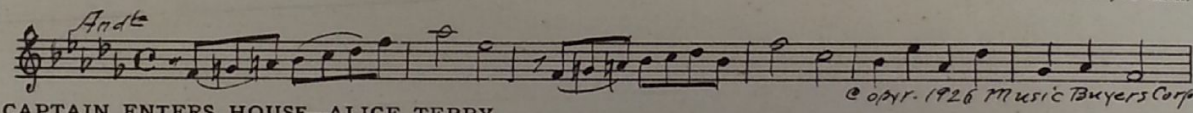
61 (Title) WITH ITALY'S ENTRANCE Repeat No. 40 (RED) 2 Min.



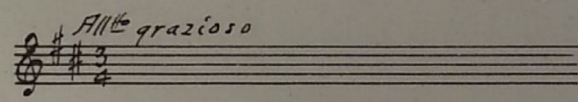
62 (Title) MARSEILLES A Summer Morning (Ewing) Butterfly 1¼ Min.



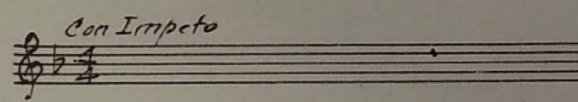
63 (Title) I CAN NEVER Symphonic Color Classic No. 7 (Kempinski) (DARK GREEN) .2 Min.



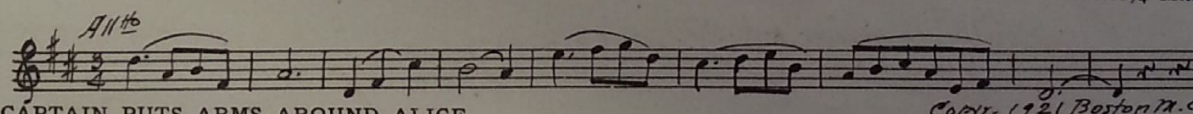
64 (Action) CAPTAIN ENTERS HOUSE—ALICE TERRY SHOWS Repeat No. 27 (WHITE) 1 Min.



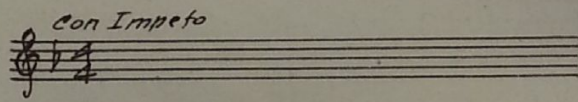
65 (Action) ALICE TERRY PUTS ARMS AROUND CAPTAIN'S NECK Repeat No. 34 (BLACK) ½ Min.



66 (Action) ALICE TERRY THROWN TO FLOOR..... Serenade (Toselli) (WHITE) 3¼ Min.



67 (Action) CAPTAIN PUTS ARMS AROUND ALICE TERRY AFTER TITLE: "TAKE ME WITH YOU" Repeat No. 34 (BLACK) 1 Min.



68 (Action) GERMAN HITS CAPTAIN WITH CANE Incid. Symphony No. 28 (Damaur) 2¾ Min.

Allo furioso

Copyr. 1925 Photo Play M. Co

69 (Title) HE IS A SPY Repeat No. 40 (RED) ½ Min.

Grave

70 (Title) THE DEDICATION OF Lu Lu-Fado (Milano) (BROWN) 1 Min.

Stoody

Copyr. 1914 E. B. Marks

71 (Title) THE CAPTAIN WANTS YOU Farewell Song (Verdi) 3 Min.

Andte

Copyr. 1921 E. M. Rosenberg

72 (Action) CARAGO SHAKES HANDS WITH CAPTAIN AND EXITS Repeat No. 34 (BLACK) ¼ Min.

con Impeto

73 (Action) FRENCH SOLDIER ON Repeat No. 66 (WHITE) 1 Min.

Allte

74 (Action) PICTURE FALLS AND BREAKS Repeat No. 34 (BLACK) ¾ Min.

con Impeto

75 (Title) GO, GO In A Kentish Garden (Rawlinson) 3½ Min.

Piu mosso

Copyr. 1924 Hawkes & Son

76 (Action) CELL INTERIOR AFTER MAN WALKS OUT OF CELL Repeat No. 66 (WHITE) ¾ Min.

Allte

77 (Action) FLASH-BACK TO ALICE TERRY DRESSED.. Marche Mysterieuse (Schad) 1½ Min.

Marcia

Copyr. 1925 Feature Mus. Co

78 (Title) VINCENNES, THE FIELD OF EXECUTION.. Continue No. 77 1 Min.

79 (Action) TRUMPETERS HAVE TRUMPETS AT MOUTH Le Pere de la Victoire (Ganne) ¼ Min.

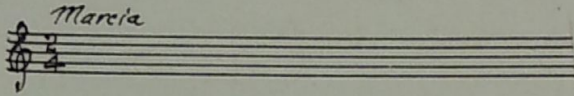
Marcia

Copyr. Carl Fischer

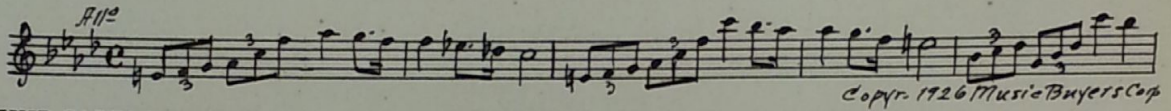
80 (Action) TRUMPETERS STOP NOTE: Repeat first 8 bars only. Repeat No. 52 "Pathos" 1¼ Min.

Andte

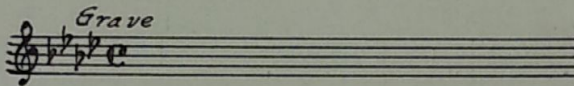
81 (Action) VOLLEY OF SHOTS Repeat No. 79 "La Pere de la Victoire" ¾ Min.



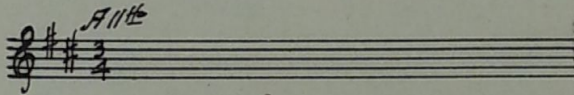
82 (Title) CAMOUFLAGED Symphonic Color Classic No. 7 (Kempinski) (DARK BLUE) 1¼ Min.



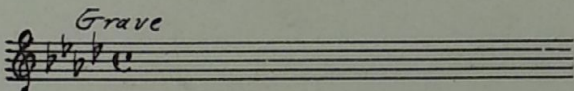
83 (Action) SHIP CABIN INTERIOR Repeat No. 40 (RED) ¾ Min.



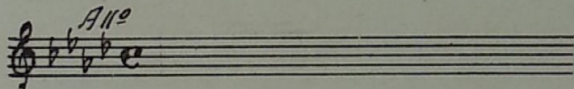
84 (Action) CAPTAIN OPENS LETTER Repeat No. 66 (WHITE) ½ Min.



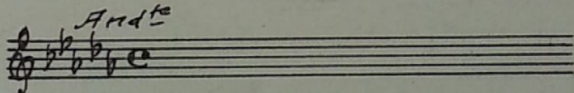
85 (Action) EXTERIOR SCENE Repeat No. 40 (RED) ½ Min.



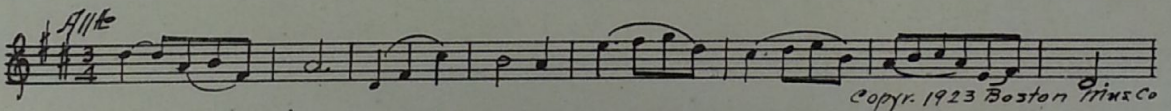
86 (Action) TORPEDO EXPLOSION Repeat No. 82 (DARK BLUE) 2½ Min.



87 (Action) CIRCUS ON SCREEN AS SUBMARINE SINKS Repeat No. 63 (DARK GREEN) 1 Min.



88 (Title) DOWN THROUGH Serenade (Toselli) (WHITE) 1¼ Min.



THE END

For Overture: "Serenade"—Toselli should be played as Solo for Instrument or Voice.

Exit: "Barcelona" published by Leo Feist.

IMPORTANT NOTE: The repetition of numbers in this cue sheet is simplified by the use of the "LUZ" SYMPHONIC COLOR GUIDE, sold by Music Buyers Corporation, 1520 Broadway, N. Y. C. The color suggested for repetition of numbers designates the Mood or Emotion and is used as a code for such repetitions.

OPERATOR'S CUES FOR DISSOLVING REELS

- End of Reel 1—Fade-out of ship after captain on bridge.
 2—Alice Terry has hands on Captain's shoulders after stopping him from hitting snake.
 3—Fade-out as old lady and Alice Terry smiling.
 4—Fade-out after son given address.
 5—Fade after German has officer's cap on head.
 6—Men running on ship's deck.
 7—Fade-out after Captain reads note.
 8—Fat man walks off after "The Captain wants you".
 9—Close-up of Alice Terry after Trumpeters blow Bugle.
 10—Fade-out of waves beating on rocks.

I I

Complete orchestrations and single piano parts of each separate number contained hereon, can be purchased from CAMEO MUSIC SERVICE CORPORATION, 315-317 West 47th Street, New York City.