

Vaporized King



M. J. MINTZ (PATENT)
JULY 31, 1923

R. A. Rowland
presents
MILTON SILLS
in
“MEN OF STEEL”

By Milton Sills
with
DORIS KENYON
Music compiled by Eugene Conte
A FIRST NATIONAL PICTURE

1 AT SCREENING Les Preludes (Liszt) 2½ Min.

✓ *Andte*

Copyr. 1910 Carl Fischer

2 (Title) THE MESSABA RANGE Emotional Agitato (Savino) ¾ Min.

cue *Allo*

Copyr. 1925 Robbins Engel

3 (Title) JAN BAKAK Mountaineer's March (Borch) ¾ Min.
NOTE: Catch effects of hissing steam, whistle blowing; cymbal roll for fire scenes. *Rose Marie*

cue *Allo modto*

Copyr. 1917 S. M. Berg

4 (Title) MARY ZORN Lace and Ruffles (Schertzinger) 1½ Min.

Allo

Copyr. 1924 Photo Play M. Co.

5 (Action) WOMAN WITH CLOTHES BASKET Dolores (Kay) 1 Min.

Andte sost.

Copyr. 1925 Forster M. Co.

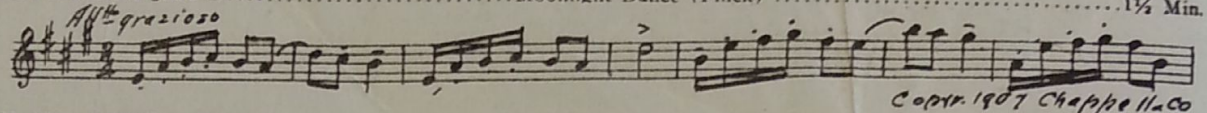
6 (Action) JAN AND FRIEND Repeat No. 3 "Mountaineer's March" ¾ Min.

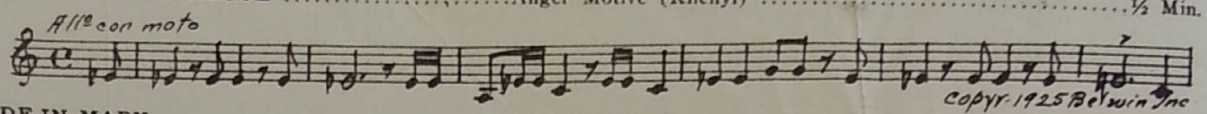
Allo modto

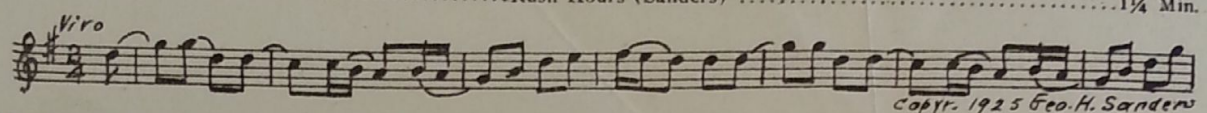
7 (Action) JAN KISSES MARY LOVE THEME: Homeland (Hueter) 1¼ Min.
Love theme - Hueter

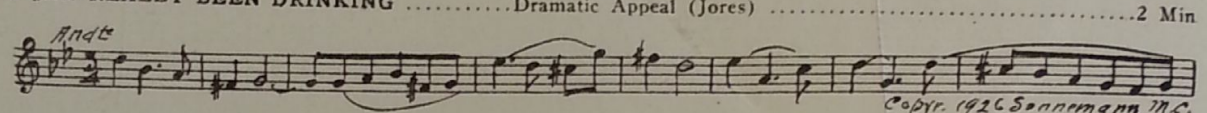
Allo modto

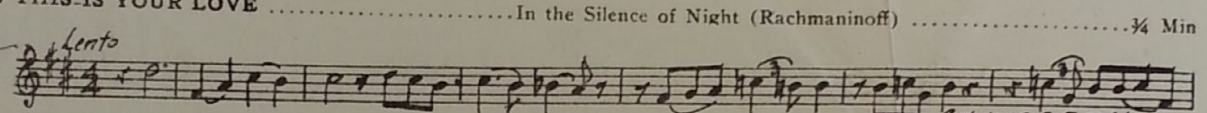
Copyr. 1926 G. Schirmer

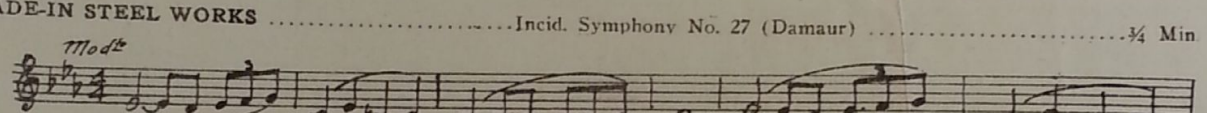
8 (Action) MARY LEAVES JAN *Quick Serenade* Moonlight Dance (Finck) 1½ Min.
All^o grazioso

 Copyr. 1907 Chapin M. Co.

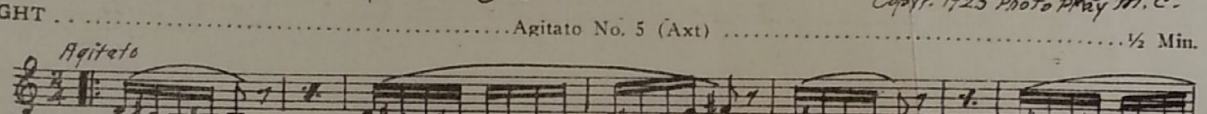
9 (Action) JAN AND FRIEND ARGUE Anger Motive (Kilenyi) ½ Min.
All^o con moto

 Copyr. 1925 Belwin Inc.

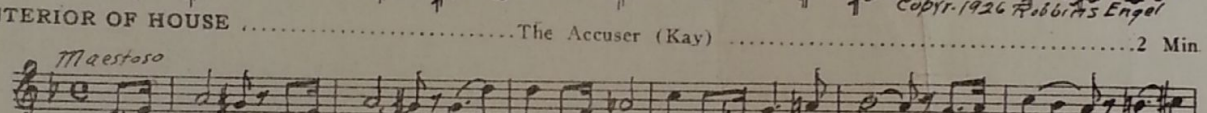
10 (Action) FADE-IN MARY Rush Hours (Sanders) 1¼ Min.
Vivo

 Copyr. 1925 Geo. H. Sanders

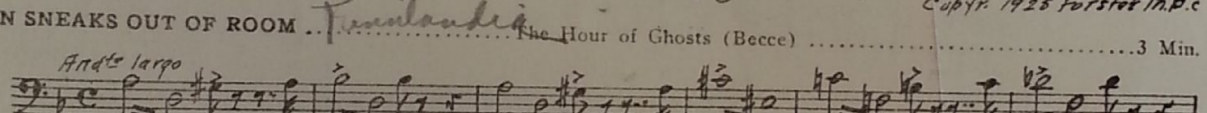
11 (Title) HAS JAN REALLY BEEN DRINKING Dramatic Appeal (Jores) 2 Min
And^{te}

 Copyr. 1926 Sannemann M. Co.

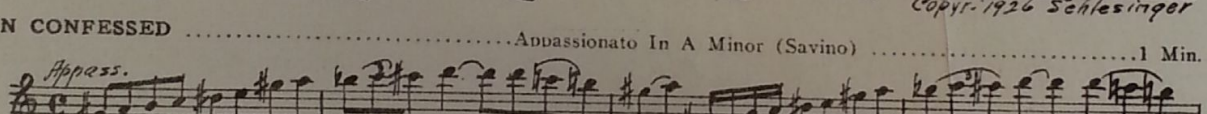
12 (Title) SO THIS IS YOUR LOVE In the Silence of Night (Rachmaninoff) ¾ Min
Lento

 Copyr. 1919 G. Schirmer

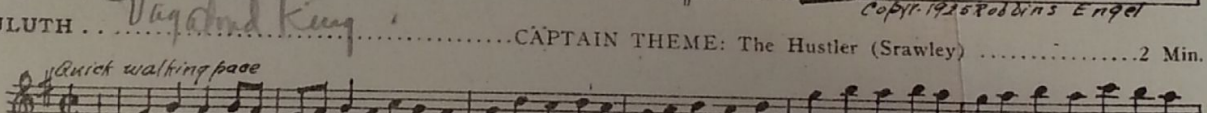
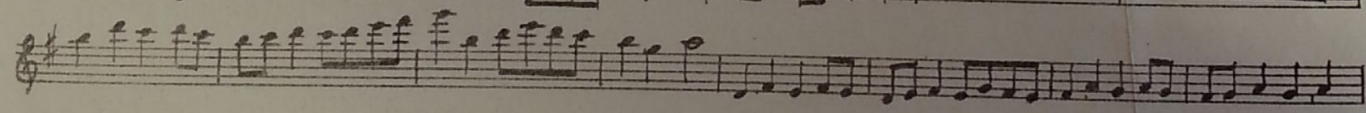
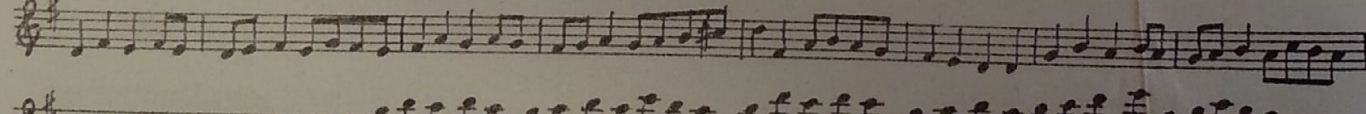
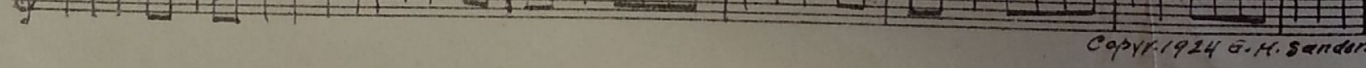
13 (Action) FADE-IN STEEL WORKS Incid. Symphony No. 27 (Damaur) ¾ Min
Moder^o

 Copyr. 1925 Photo Play M. Co.

14 (Action) FIGHT Agitato No. 5 (Axt) ½ Min.
Agitato

 Copyr. 1926 Robbins Engel

15 (Action) INTERIOR OF HOUSE The Accuser (Kay) 2 Min
Maestoso

 Copyr. 1925 Forster Th. Co.

16 (Action) JAN SNEAKS OUT OF ROOM *Turandot* The Hour of Ghosts (Becca) 3 Min.
And^{te} largo

 Copyr. 1926 Schlesinger

17 (Title) JAN CONFESSED Appassionato In A Minor (Savino) 1 Min.
Appass.

 Copyr. 1925 Robbins Engel

18 (Title) DULUTH *Vagabond King* CAPTAIN THEME: The Hustler (Srawley) 2 Min.
Quick walking pace




 Copyr. 1924 G. H. Sanders

19 (Action) FADE-IN JAN AT SIDE OF BOAT Agitato Misterioso (Bece) 1 1/4 Min.

Musical notation for item 19, starting with the tempo marking *Agitato*. The score includes a treble clef, a key signature of one sharp (F#), and a 2/4 time signature. It features a series of eighth and sixteenth notes with some rests. A handwritten '1' is above the first measure. The copyright notice at the bottom right reads 'Copyr. 1926 Schlesinger'.

20 (Title) WANTED FOR MURDER Le Rouet d'Omphale (St. Saens) 1 1/2 Min.

Musical notation for item 20, starting with the tempo marking *Andino*. The score includes a treble clef, a key signature of one sharp (F#), and a 2/4 time signature. It features a series of eighth and sixteenth notes. The copyright notice at the bottom right reads 'Copyr. 1908 Carl Fischer'.

21 (Action) GIRLS COME ABOARD NOTE: Start at letter J; tremolo throughout for sliding coal in chute. Repeat Captain Theme No. 18 1 1/4 Min.

Musical notation for item 21, starting with the tempo marking *Quick walking pace*. The score includes a treble clef, a key signature of one sharp (F#), and a 2/4 time signature. It shows a few notes on a five-line staff.

22 (Title) STEEL CITY PITT THEME: Characteristic No. 1 (Roberts) 2 Min.

Musical notation for item 22, starting with the tempo marking *All^o mod^o*. The score includes a treble clef, a key signature of one sharp (F#), and a 2/4 time signature. It features a series of eighth and sixteenth notes. A handwritten 'Cue' is written on the left side. The copyright notice at the bottom right reads 'Copyr. 1918 Belwin'.

23 (Action) JAN READS NOTE—TEARS IT Repeat No. 9 "Anger Motive" 3/4 Min.

Musical notation for item 23, starting with the tempo marking *All^o con moto*. The score includes a treble clef, a key signature of one sharp (F#), and a 3/4 time signature. It shows a few notes on a five-line staff.

24 (Title) CLAIRE PITT'S Gossip (Kav) *Love Letters* 1 1/2 Min.

Musical notation for item 24, starting with the tempo marking *All^o spirit.*. The score includes a treble clef, a key signature of one sharp (F#), and a 2/4 time signature. It features a series of eighth and sixteenth notes. The copyright notice at the bottom right reads 'Copyr. 1925 Forster Mus. P. Co.'.

25 (Action) MARY ENTERS ROOM—SEES MOTHER Memories Eternal (Torke) *Mother taught me* 1 1/4 Min.

Musical notation for item 25, starting with the tempo marking *And^{te}*. The score includes a treble clef, a key signature of one sharp (F#), and a 2/4 time signature. It features a series of eighth and sixteenth notes. The copyright notice at the bottom right reads 'Copyr. 1926 Music Buyers Co.'.

26 (Action) MOTHER CRYING AFTER TELLING STORY Mother o' Mine (Tours) 3/4 Min.

Musical notation for item 26, starting with the tempo marking *Adagio*. The score includes a treble clef, a key signature of one sharp (F#), and a 2/4 time signature. It features a series of eighth and sixteenth notes. The copyright notice at the bottom right reads 'Copyr. 1917 Chappel-Co'.

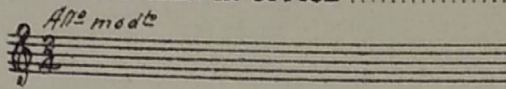
27 (Title) MONTHS OF Ondes Mysterieuses (Franceschi) 1 1/4 Min.

Musical notation for item 27, starting with the tempo marking *All^o mod^o*. The score includes a bass clef, a key signature of one sharp (F#), and a 2/4 time signature. It features a series of eighth and sixteenth notes. The copyright notice at the bottom right reads 'Copyr. 1925 J. Franceschi'.

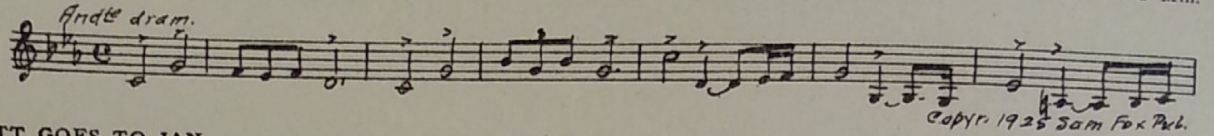
28 (Action) JAN SEES VISION Repeat Love Theme No. 7 1 1/2 Min.

Musical notation for item 28, starting with the tempo marking *Mod^o*. The score includes a treble clef, a key signature of one sharp (F#), and a 2/4 time signature. It shows a few notes on a five-line staff.

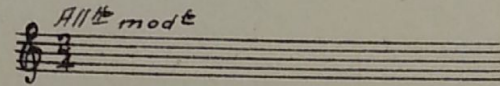
29 (Action) PITT AND CAPTAIN IN OFFICE Repeat Pitt Theme No. 22 3 Min



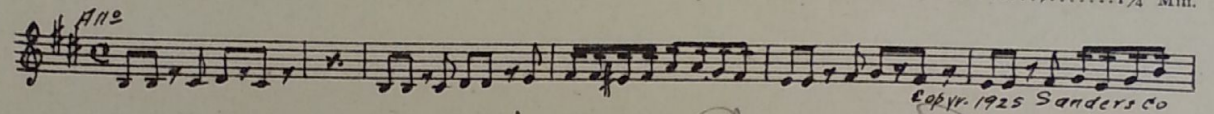
30 (Action) PITT AND CAPTAIN LEAVE OFFICE Cun of Bitterness (Zamecnik) 2 Min



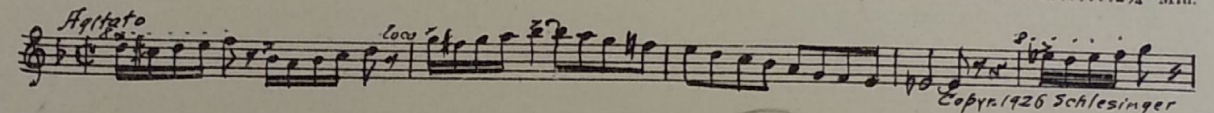
31 (Action) PITT GOES TO IAN Repeat Pitt Theme No. 22 2 Min



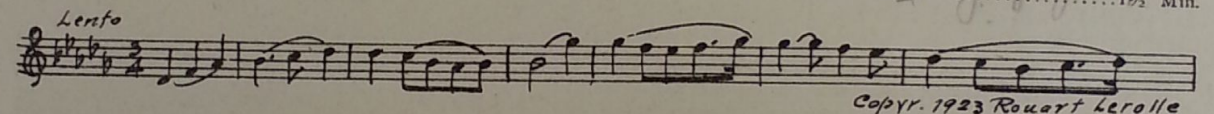
32 (Action) JAN DRINKS WATER Omens (Schad) 1/4 Min



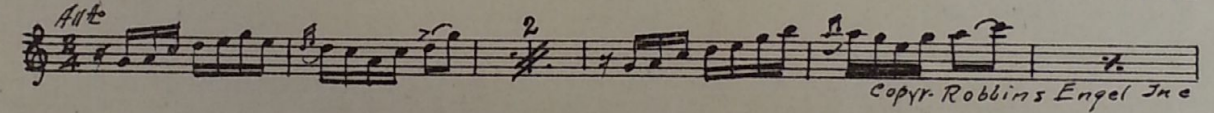
33 (Action) JAN SEES TRAIN Mob-Rule (Bece) 2/4 Min



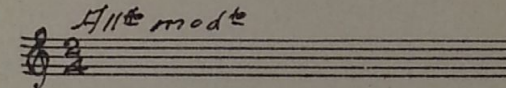
34 (Title) BACK IN MASSABA Incantation (Chapelier) 1/2 Min



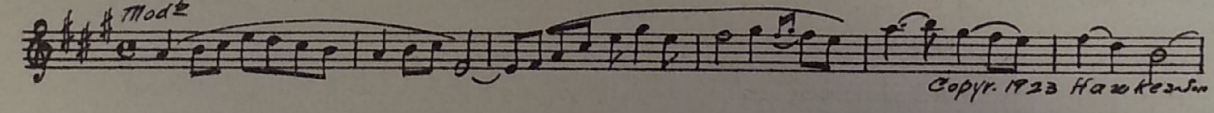
35 (Title) JAN'S SLOW In a Cherry Blossom Garden (Edwards) 2 Min



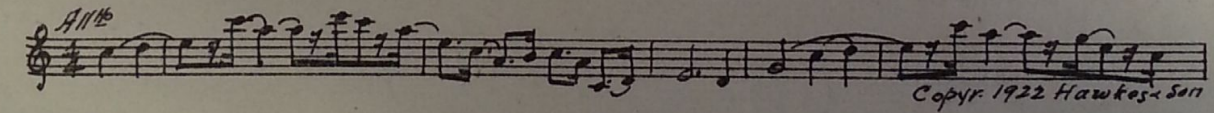
36 (Action) PITT AND CAPTAIN ARGUE Repeat Pitt Theme No. 22 1 Min



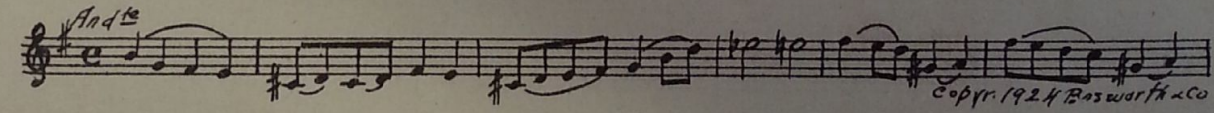
37 (Title) JOHN, HAVE YOU EVER BEEN An Evening Song (Wood) 1/4 Min



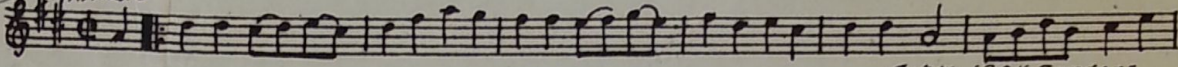
38 (Action) CLAIRE GOES TO PHONE Fleurette d'Amour (Fletcher) 1/4 Min



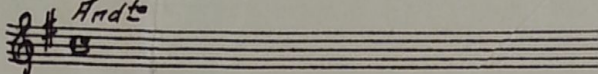
39 (Action) CLAIRE TAKES JAN'S HAND Love's Awakening (Ketelbey) 3/4 Min



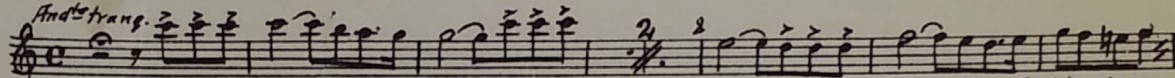
40 (Action) PITT ADDRESSED MEN Merry Cavaliers (Srawley) 1½ Min.

Animato

Copyr. 1924 Sanders

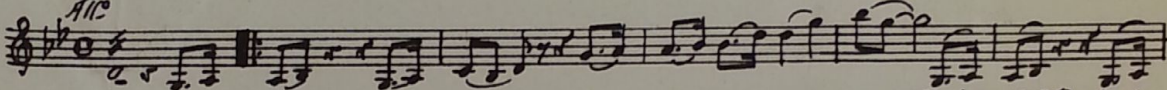
41 (Title) CLAIRE, WILL YOU MARRY ME Repeat No. 39 "Love's Awakening" 1 Min.

Andte


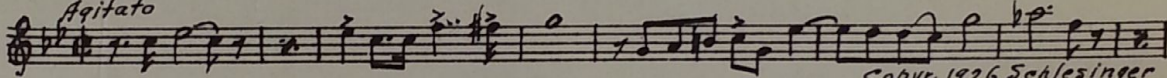
42 (Action) MARY SEES JAN—CRIES OUT Tragic Moments (Bece) 2 Min.

Andte trag.

Copyr. 1925 Schlesinger

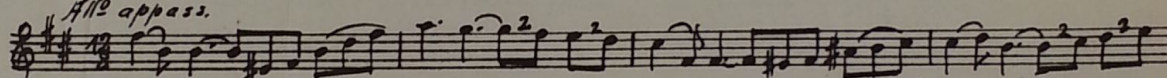
43 (Action) FURNACE SCENE Gruesome Misterioso (Borch) 2¾ Min.

Allo

Copyr. 1919 DeLozin

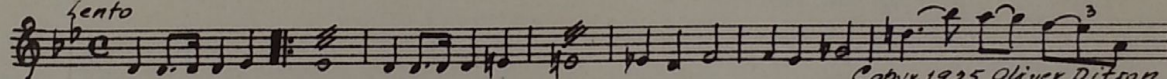
44 (Title) GOD SAVE ME, I WILL TELL In a Critical Situation (Bece) 2¾ Min.

Agitato

Copyr. 1926 Schlesinger

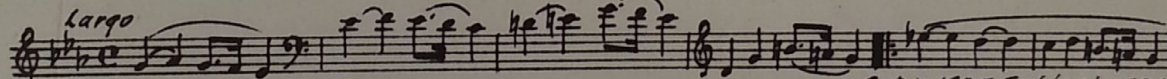
45 (Action) MARY FAINTS Desperation (Schad) 2 Min.

Allo appass.

Copyr. 1925 Sanders

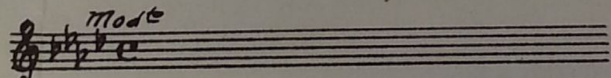
46 (Title) REQUIEM Molto Drammatico e Grandioso (Borch) 2 Min.

lento

Copyr. 1925 Oliver Ditson

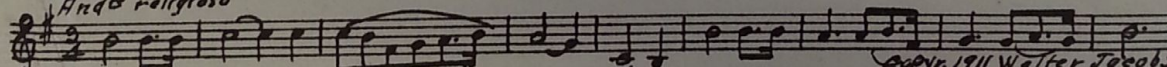
NOTE: Very serious religious and burial scene.
47 (Action) PEOPLE Largo Tragico (Chopin) 1¼ Min.

Largo

Copyr. 1925 Schlesinger

48 (Action) JAN GOES TO MARY Repeat Love Theme No. 7 1 Min.

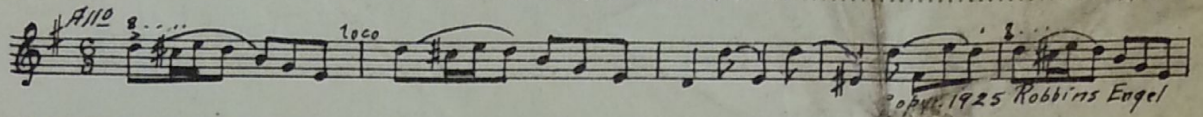
Moderato


49 (Action) FADE-IN HOLY CROSS Crucifix (Faure) ½ Min.

Andte religioso

Copyr. 1911 Walter Jacobs

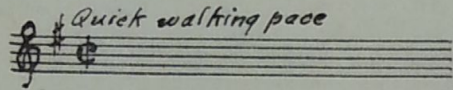
Handwritten notes:
Fugue
#f d# e# / # a# c# f# a#

50 (Title) THE GREATEST DAYIn Merry Mood (Axt) 2¼ Min.

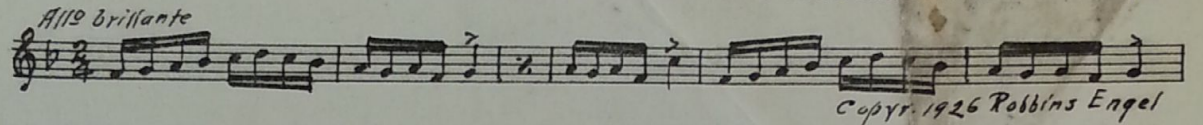


Copyr. 1925 Robbins Engel

51 (Action) CAPTAIN ENTERS JAN'S ROOMRepeat Captain Theme No. 18 1 Min.

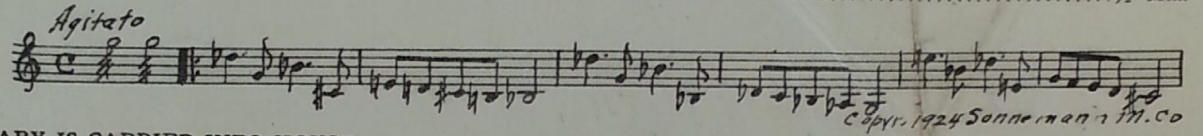


52 (Action) STREET SCENECarnival (Savino) 1¼ Min.



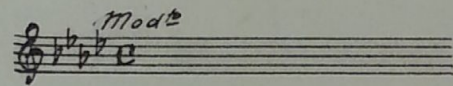
Copyr. 1926 Robbins Engel

53 (Action) AUTO STOPS—JAN PICKS UP MARYExcitement (Breil) ½ Min.

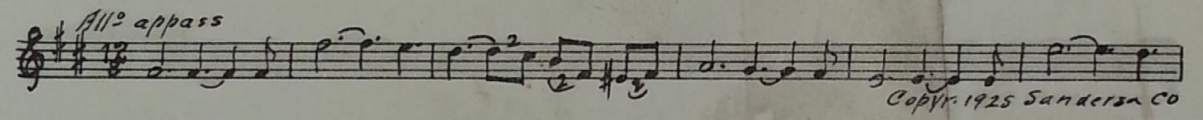


Copyr. 1924 Sonneman & M. Co

54 (Action) MARY IS CARRIED INTO HOUSERepeat Love Theme No. 7 1½ Min.

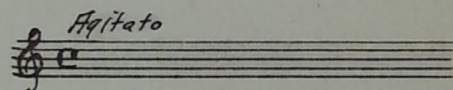


55 (Action) JAN SPEAKS TO PITTDefiant Love (Schad) 1½ Min.

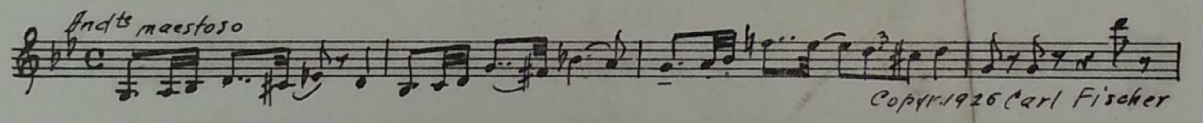


Copyr. 1925 Sanders Co

56 (Action) JAN ADDRESSES MOBRepeat No. 53 "Excitement" 2 Min.

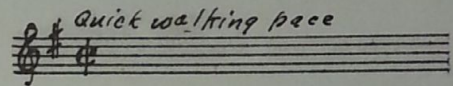


57 (Title) KEEP YOUR SHIRTS ONKarma (Herbert) 1 Min.

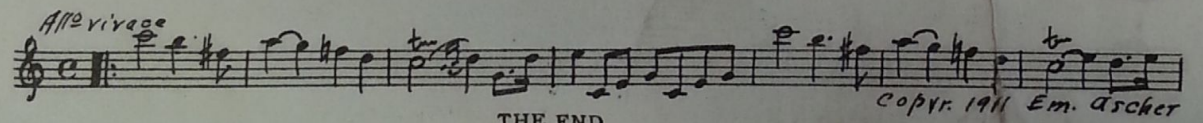


Copyr. 1926 Carl Fischer

58 (Title) BROOK, WE'RE IN A HELLUVARepeat Captain Theme No. 18 1 Min.



59 (Action) WEDDING SCENEWedding March (Mendelssohn) 1 Min.



Copyr. 1911 Em. Ascher

THE END

Printed in U. S. A.

Complete orchestrations and single piano parts of each separate number contained hereon, can be purchased from CAMEO MUSIC SERVICE CORPORATION, 315-317 West 47th Street, New York City.