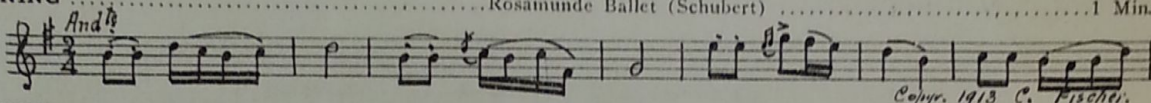
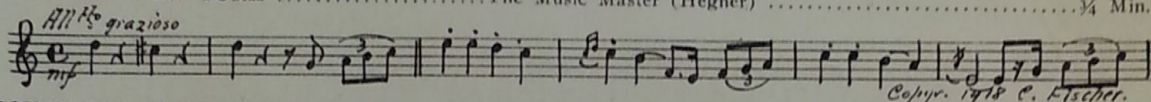
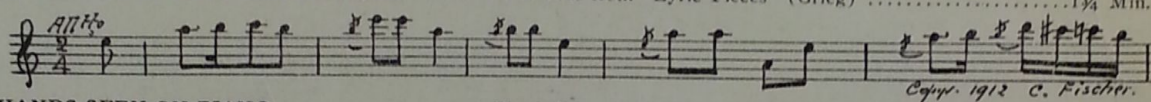
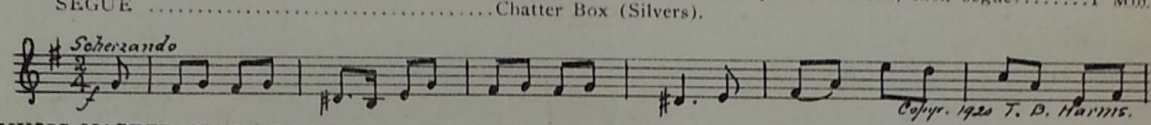
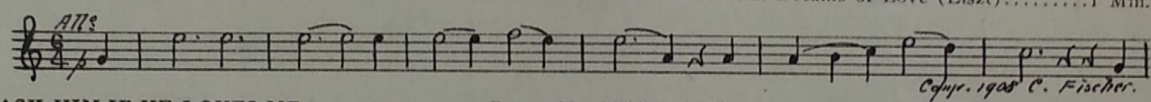
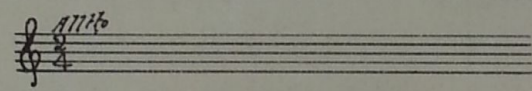
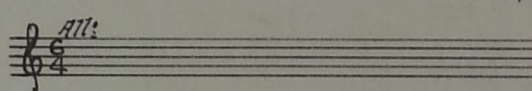
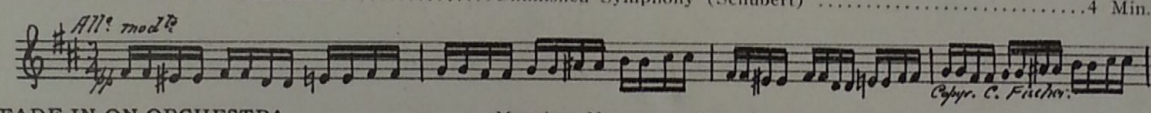
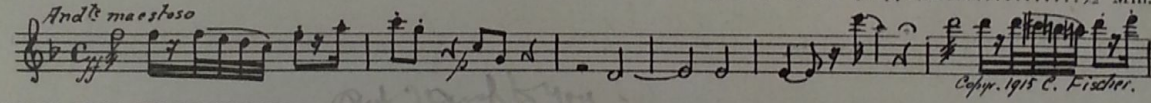
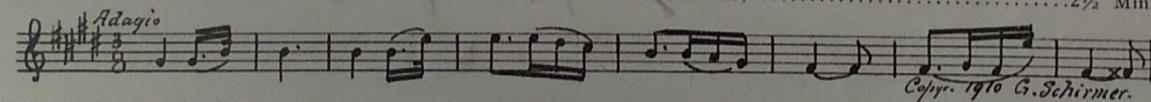
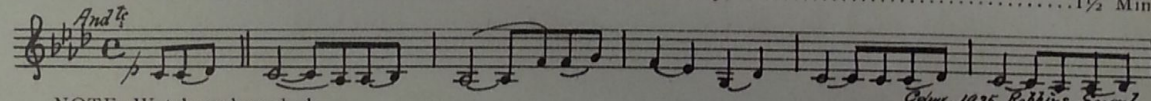


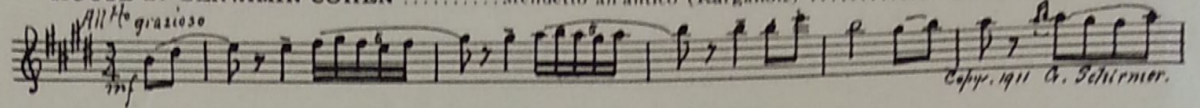
WILLIAM FOX PRODUCTION "THE MUSIC MASTER"

Music compiled by Michael P. Krueger
 The timing is based on speed of 12 minutes per reel

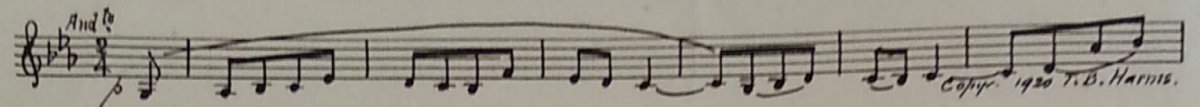
1	AT SCREENING	Rosamunde Ballet (Schubert) 1 Min.
		<i>Copyright, 1913 C. Fischer.</i>
2	(Title) TIME—1900—NEW YORK	The Music Master (Hegner) ¾ Min.
		<i>Copyright, 1918 C. Fischer.</i>
3	(Action) BOY COMES IN WITH SOUSAPHONE	Albumleaf from "Lyric Pieces" (Grieg) 1¼ Min.
		<i>Copyright, 1912 C. Fischer.</i>
4	(Action) HANDS SEEN ON PIANO	Piano Play Scale When Played on Screen, then segue 1 Min.
		<i>Copyright, 1920 T. D. Harris.</i>
5	(Action) MUSIC MASTER OPENS DOOR	MUSIC MASTER THEME: Dreams of Love (Liszt) 1 Min.
		<i>Copyright, 1908 C. Fischer.</i>
6	(Title) ASK HIM IF HE LOVES ME	Repeat No. 3 "Albumleaf" 1¼ Min.
		
7	(Title) HE SAYS "YES"	Repeat Music Master Theme No. 5 1¼ Min.
		
8	(Action) TWO WOMEN SEEN TALKING	Unfinished Symphony (Schubert) 4 Min.
		<i>Copyright, C. Fischer.</i>
9	(Action) FADE-IN ON ORCHESTRA	Morning, Noon and Night In Vienna (Suppe) ½ Min.
		<i>Copyright, 1915 C. Fischer.</i>
10	(Action) FADE-OUT ON ORCHESTRA	Adagio Cantabile (Strauss) 2½ Min.
		<i>Copyright, 1910 G. Schirmer.</i>
11	(Title) NEVER CAN I FORGET	Thoughts of Yore (Frey) 1½ Min.
		<i>Copyright, 1926 Robbins-Snyder.</i>

NOTE: Watch cuckoo clock.

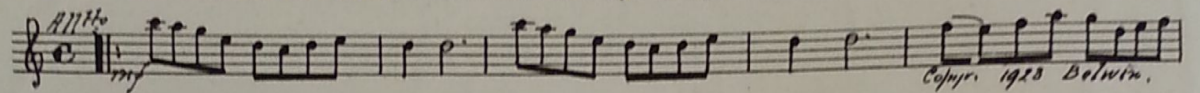
12 (Title) TIME—THAT NIGHT—THE BANKING HOUSE OF BENJAMIN COHEN Menuetto all'antico (Karganoff) 2¼ Min.

All^{to} grazioso

 Copyr. 1911 G. Schirmer.

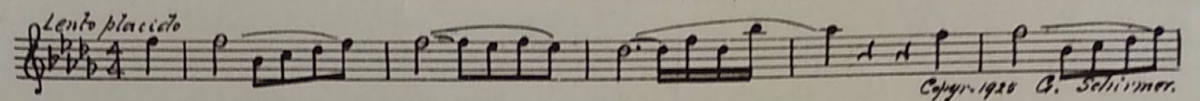
13 (Action) BILL-HEAD SEEN Moon Shadows (Schroeder) 1½ Min.

And^{te}

 Copyr. 1920 T. B. Harris.

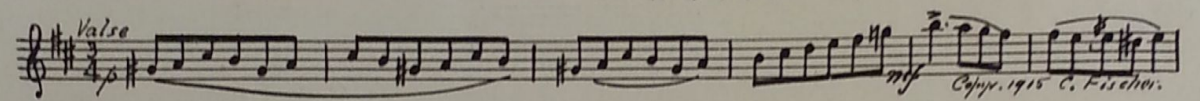
14 (Action) GIRL AND BOY SEEN IN CARRIAGE Miss Blue Eyes (Bergh) 1 Min.

All^{to}

 Copyr. 1923 Belwin.

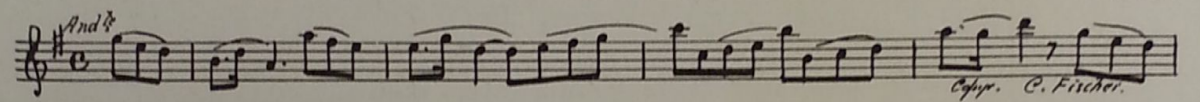
15 (Title) ELENE—MY WIFE! Consolation No. 3 (Liszt) 2¼ Min.

Lento placido

 Copyr. 1926 G. Schirmer.

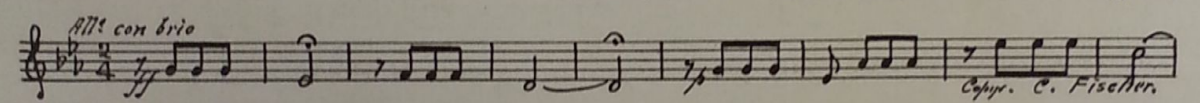
16 (Action) BOY STARTS TO PLAY PIANO Minute Waltz (Chopin) (Piano Solo) 1 Min.

Valse

 Copyr. 1915 C. Fischer.

17 (Action) BOY STOPS PLAYING PIANO Clair de Lune (Thome) 1¾ Min.

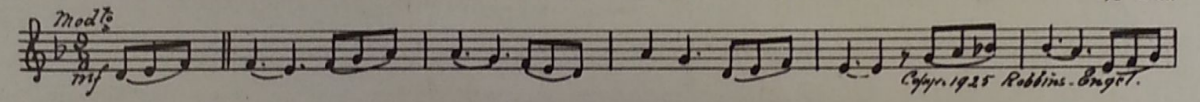
And^{te}

 Copyr. C. Fischer.

18 (Action) GIRL PLAYS PIANO Fifth Symphony (Beethoven) (Piano Solo) 1¼ Min.

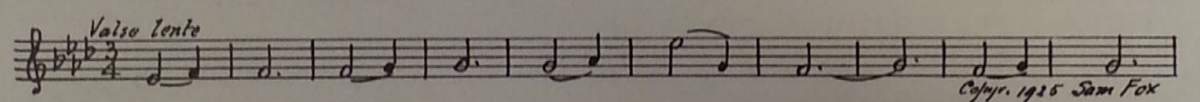
All^o con brio

 Copyr. C. Fischer.

19 (Title) HOW STRANGE! I NEVER Orchestra pick up "Fifth Symphony" ¾ Min.

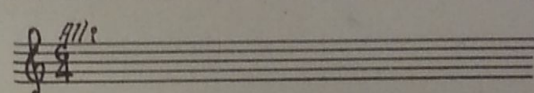
20 (Action) MEN ENTER In Despair (Berge) 1½ Min.

Mod^{to}

 Copyr. 1925 Robbins-Budget.

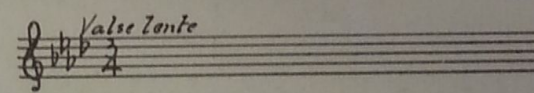
21 (Title) MR. BEVERLY CRUGER LOVE THEME: Magic Love (Bradford) 1 Min.

Valse lento

 Copyr. 1925 Sam Fox

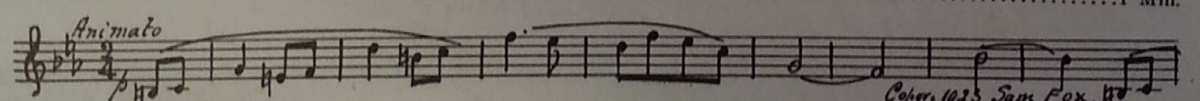
22 (Action) GIRL AND BOY LEAVE HOUSE Repeat Music Master Theme No. 5 ½ Min.

All^o


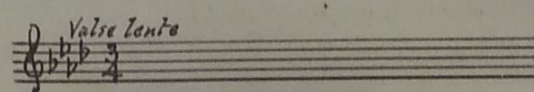
23 (Title) TIME—THE NEXT WEDNESDAY—HENRY STANTON'S RESIDENCE Repeat Love Theme No. 21 2¼ Min.

Valse lento


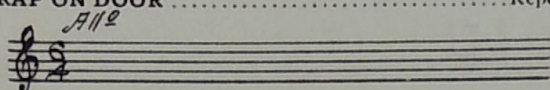
24 (Action) MAN ENTERS Wings of Joy (Van Norman) 1 Min.

Animato

 Copyr. 1925 Sam Fox.

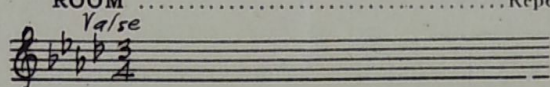
25 (Action) MAN LEAVES Repeat Love Theme No. 21 ½ Min.

Valse lento


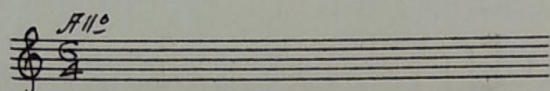
26 (Action) RAP ON DOOR Repeat Music Master Theme No. 5 2 Min.



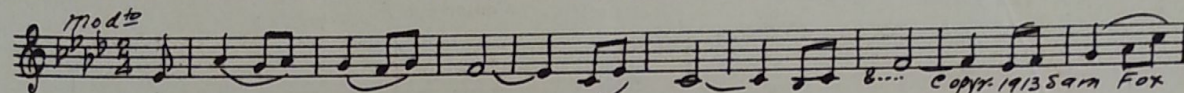
27 (Action) MUSIC MASTER IS SEEN IN RECEPTION ROOM Repeat Love Theme No. 21 ¾ Min.



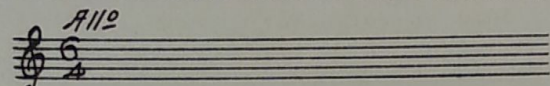
28 (Action) RAPPING ON DOOR Repeat Music Master Theme No. 5 2 Min.



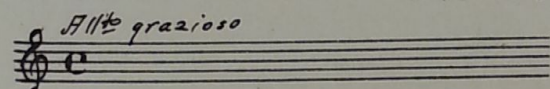
29 (Action) GIRL SITS DOWN AT PIANO Eleanor (Deppen) ¾ Min.



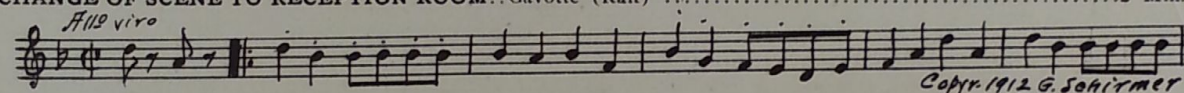
30 (Action) MUSIC MASTER RECOGNIZES DOLL Repeat Music Master Theme No. 5 2 Min.



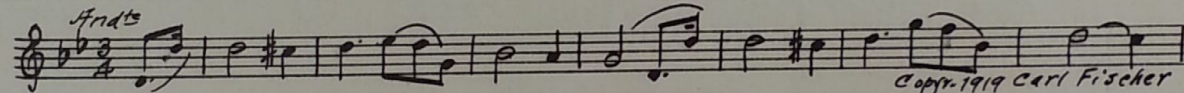
31 (Action) GIRL SITS AT PIANO Repeat No. 2 "The Music Master" 1 Min.



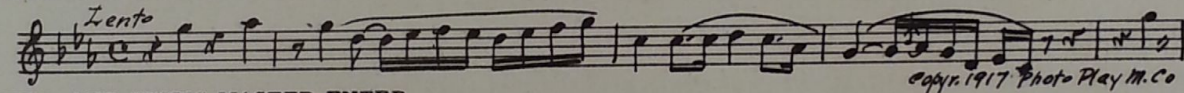
32 (Action) CHANGE OF SCENE TO RECEPTION ROOM.. Gavotte (Raff) 2 Min.



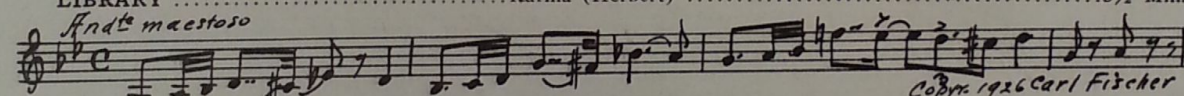
33 (Action) GIRL GETS UP FROM PIANO Legende (Wieniawski) 3 Min.



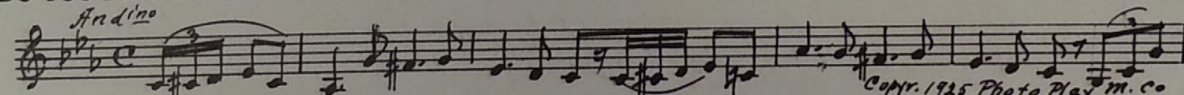
34 (Action) GIRL RETURNS TO MUSIC ROOM Nocturne No. 13 from "Chopin Suite" 3 Min.



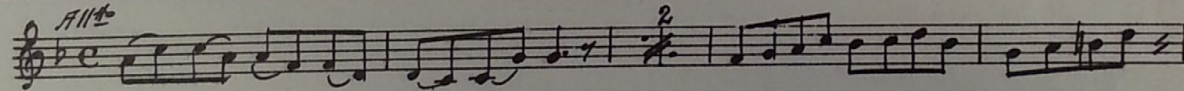
35 (Action) GIRL AND MUSIC MASTER ENTER LIBRARY Karma (Herbert) 3½ Min.



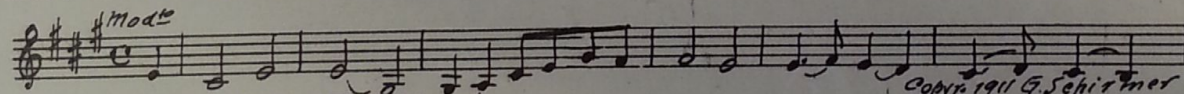
36 (Title) DO YOU THINK THEY WOULD Incid. Symphony No. 25 (Kempinski) 1½ Min.



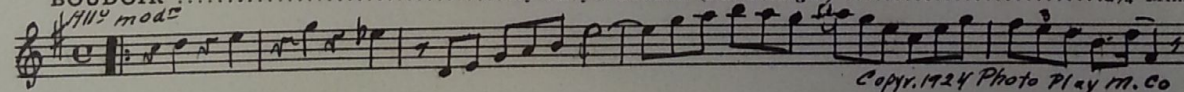
37 (Action) CHANGE OF SCENE TO RECEPTION ROOM.. The Golden Gate (Wellesley) 1¼ Min.



38 (Action) PARTY COME IN TO LIBRARY Melodie (Friml) 3 Min.



39 (Title) TIME—A MONTH LATER—HELENE'S BOUDOIR My Lady's Boudoir (Schertzing) 2¼ Min.



- 40 (Action) FADE-IN TO PISTOL SET Idilio (Lack) 3¼ Min.
- 41 (Title) TIME—THE NEXT DAY—ST. STEPHEN'S CHURCH Bridal Chorus from "Lohengrin" (Wagner) 2½ Min.
- 42 (Action) NOTE: Play very slowly and "PP." COUPLE LEAVE ALTAR Wedding March (Mendelssohn) 1½ Min.
- 43 (Action) BUTLER HANDS MAN TELEGRAM Dramatic Tension (Noyes) 2¼ Min.
- 44 (Action) CHANGE OF SCENE TO MUSIC MASTER Repeat Music Master Theme No. 5 ¾ Min.
- 45 (Action) CHANGE OF SCENE TO POONS AND JENNY. Repeat No. 3 "Albumleaf" 3 Min.
- 46 (Title) FROM ONE BRIDE TO ANOTHER Heart to Heart (Trinkaus) 1 Min.
- 47 (Action) BELL SEEN RINGING Repeat Music Master Theme No. 5 ¾ Min.
- 48 (Title) YOU—YOU SHOULDN'T HAVE COME Lament (Herrmann) 1½ Min.
- 49 (Action) MUSIC MASTER AND DAUGHTER EMBRACE. Repeat Music Master Theme No. 5 (Play "FF") ¾ Min.
- 50 (Action) MUSIC MASTER CALLS FRIENDS Spirit of Spring (Reiser) ¾ Min.
- 51 (Action) CLOSE-UP OF HELENE AND ANDREW Repeat Love Theme No. 21 ¾ Min.

THE END

Printed in U. S. A.

Orchestrations or single piano parts of each separate musical selection suggested hereon, can be purchased from CAMEO MUSIC SERVICE CORPORATION, 315-317 WEST 47TH STREET, NEW YORK CITY.