

Thematic Music

Cue Sheet

M.J. MINTZ (PATENT)  
JULY 31, 1923.

ADOLPH ZUKOR and JESSE L. LASKY

present

**THOMAS MEIGHAN**

in

**"THE NEW KLONDIKE"**

with

**Lila Lee**

From the story by Ring Lardner

Screen play by Thomas J. Geraghty

Directed by Lewis Milestone

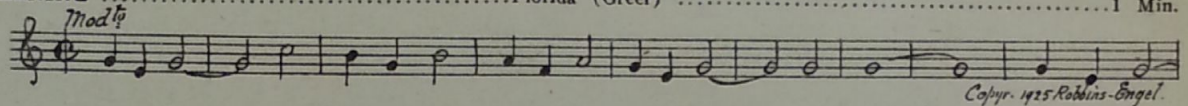
Music compiled by James C. Bradford

Footage 7445 feet

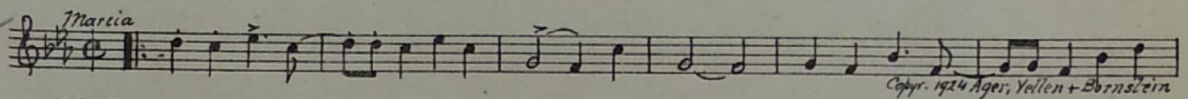


*A Paramount Picture*

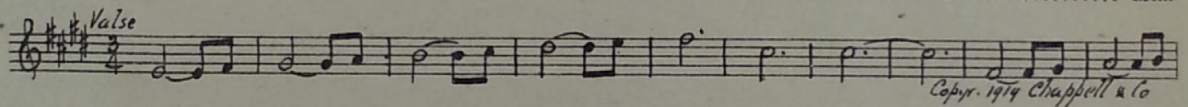
- 1 AT SCREENING ..... Florida (Greer) ..... 1 Min.



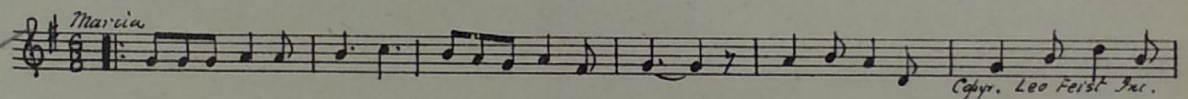
- 2 (Title) LOOKING DOWN ..... Big Boy (Ager) ..... 2 Min.



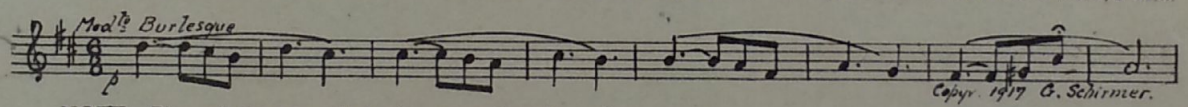
- 3 (Title) BEACH HAVEN ..... On Miami Shore (Jacobi) ..... 1 Min.



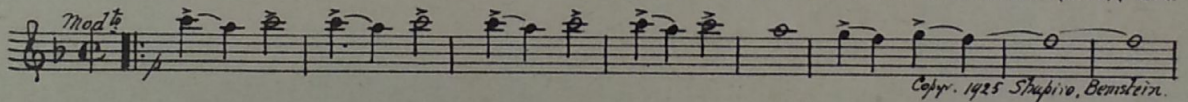
- 4 (Action) FLASH-BACK TO TOM AND FRIENDS... Where Do We Go From Here, Boys? (Wenrich)..... 2 Min.



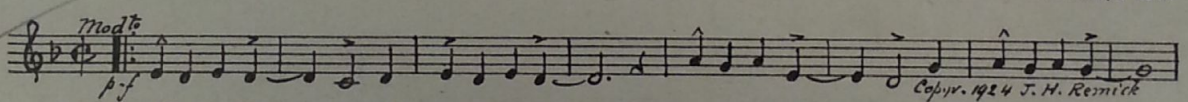
- 5 (Title) THE FIRST HOUR ABOARD ..... Miracle of Love (McKee) ..... 1½ Min.



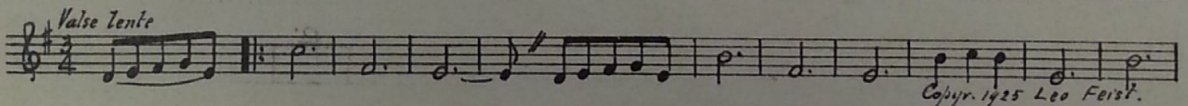
- 6 (Action) TOM BUMPS INTO EVELYN ..... Oh Boy, What a Girl (Green) ..... 1¼ Min.



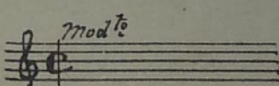
- 7 (Action) FLASH-BACK TO BOY FRIEND AND MAID... Me and the Boy Friend (Monaco) ..... 1½ Min.



- 8 (Action) FLASH-BACK TO EVELYN AND TOM... We'll Meet Again in Normandy (Cambria) ..... 1 Min.



- 9 (Title) MIAMI AT LAST ..... Repeat No. 1 "Florida" ..... 2¼ Min.



10 (Title) WHY DID'T YOU TELL ME.....THEME: Don't Wake Me Up, Let Me Dream (Baer) .....2¼ Min.

Musical notation for item 10, including treble clef, key signature of one flat, and dynamic marking *Mod<sup>to</sup>*. Copyright 1925 Leo Feist.

11 (Title) THE BEACH HOME OFFICE..... No Man's Mamma (Pollack) .....1¾ Min.

Musical notation for item 11, including treble clef, key signature of one flat, and dynamic marking *Mod<sup>to</sup>*. Copyright 1925 Ager, Yellen + Bornstein.

12 (Title) HOW DID YOU MAKE OUT WITH..... Characteristic Allegro (Moszkowski) .....¾ Min.

Musical notation for item 12, including treble clef, key signature of one flat, and dynamic marking *All<sup>o</sup> mp*. Copyright 1925 Robbins Engel.

13 (Action) TOM IN LOCKER ROOM ..... Pretty Girl (Fauchey) .....1¾ Min.

Musical notation for item 13, including treble clef, key signature of one sharp, and dynamic marking *March*. Copyright 1907 W. H. Zook.

14 (Title) DIDN'T YOU GET MY WIRE?..... Smilin' Through (Penn) .....2 Min.

Musical notation for item 14, including treble clef, key signature of one flat, and dynamic marking *Slowly*. Copyright 1921 Witmark & Sons.

15 (Title) THE DECIDING GAME ..... Comedy Galop (Fahrbach) .....1¾ Min.

Musical notation for item 15, including treble clef, key signature of one sharp, and dynamic marking *Galop*. Copyright 1925 Hawkes & Son.

16 (Action) EVELYN AT DESK WRITING..... In Pensive Mood (Berge) .....2 Min.

Musical notation for item 16, including treble clef, key signature of one sharp, and dynamic marking *mod<sup>to</sup> mf*. Copyright 1925 Ross Jungnickel.

17 (Action) BUS DRIVES UP TO HOTEL..... Rural Flirts (Bradford) .....2¾ Min.

Musical notation for item 17, including treble clef, key signature of one sharp, and dynamic marking *All<sup>o</sup> <sup>1/2</sup>to*. Copyright 1925 Belwin Inc.

18 (Title) FLAGLER STREET ..... Repeat No. 1 "Florida" .....1½ Min.

Musical notation for item 18, including treble clef, key signature of one flat, and dynamic marking *Mod<sup>to</sup>*.

19 (Action) LODKING SHACK ..... Charley, My Boy (Fiorito) .....1¾ Min.

Musical notation for item 19, including treble clef, key signature of one flat, and dynamic marking *Mod<sup>to</sup>*. Copyright 1924 J. Berlin Inc.

20 (Action) TOM IN BILLIARD PARLOR ..... Mindin' My Bus'ness (Donaldson) .....1 Min.

Musical notation for item 20, including treble clef, key signature of one sharp, and dynamic marking *Mod<sup>to</sup> mf-f*. Copyright 1923 J. Berlin.

21 (Action) EVELYN AT HOTEL ..... Whimsical Charms (Fresco) .....1½ Min.

Musical notation for item 21, including treble clef, key signature of one sharp, and dynamic marking *Valse Lento p*. Copyright 1925 Belwin Inc.

22 (Title) IN THE MAD RUSH ..... En Chevauchant (Gillet) ..... 2 Min.

Handwritten musical notation for "IN THE MAD RUSH" in treble clef, 8/8 time, with tempo marking *All.<sup>o</sup> ma non troppo*. Copyright 1922 P. Decourcelle.

23 (Action) EVELYN AND AUNT IN ROOM ..... Au fil de l'eau (Gillet) ..... 2½ Min.

Handwritten musical notation for "EVELYN AND AUNT IN ROOM" in treble clef, 4/4 time, with tempo marking *All.<sup>o</sup> f<sup>o</sup>*. Copyright 1919 P. Decourcelle.

24 (Action) TOM FINALLY MET EVELYN ..... Alone at Last (Fiorito) ..... ¾ Min.  
NOTE: Play "PP" throughout entire sequence.

Handwritten musical notation for "TOM FINALLY MET EVELYN" in treble clef, 4/4 time, with tempo marking *Mod.<sup>o</sup> f<sup>o</sup>*. Copyright 1925 J. Berlin.

25 (Title) LET'S TAKE A RIDE..... How-Wah-Ya (Banta) ..... 2½ Min.

Handwritten musical notation for "LET'S TAKE A RIDE" in treble clef, 2/4 time, with tempo marking *All.<sup>o</sup>*. Copyright 1924 Robbins Engel.

26 (Action) FLASH TO WEST'S OFFICE ..... Prelude Satanic (Kempinski) ..... ¾ Min.

Handwritten musical notation for "FLASH TO WEST'S OFFICE" in treble clef, 2/4 time, with tempo marking *All.<sup>o</sup> vivace*. Copyright 1925 Photo Play Mus. Co.

27 (Action) EVELYN AND TOM ON SETTEE ..... Repeat Theme No. 10 ..... 1 Min.

Handwritten musical notation for "EVELYN AND TOM ON SETTEE" in treble clef, 4/4 time, with tempo marking *Mod.<sup>o</sup> f<sup>o</sup>*.

28 (Action) TOM AND BOY FRIENDS..... Repeat No. 4 "Where Do We Go From Here, Boys?"..... 2½ Min.

Handwritten musical notation for "TOM AND BOY FRIENDS" in treble clef, 6/8 time, with tempo marking *Marcia*.

29 (Action) TOM JOINS EVELYN AGAIN..... Yes, Sir, That's My Baby (Donaldson) ..... 1¼ Min.

Handwritten musical notation for "TOM JOINS EVELYN AGAIN" in treble clef, 4/4 time, with tempo marking *Mod.<sup>o</sup> f<sup>o</sup>*. Copyright 1925 J. Berlin.

30 (Title) LOTS—PLOTS—PAYMENTS ..... Follow the Swallow (Henderson) ..... 2 Min.

Handwritten musical notation for "LOTS—PLOTS—PAYMENTS" in treble clef, 4/4 time, with tempo marking *Fox Trot*. Copyright 1924 J. H. Remick & Co.

31 (Title) THE HOTEL MIAMI-CARLTON ..... Repeat No. 3 "On Miami Shore" ..... 2 Min.  
NOTE: Play a la burlesque very quietly.

Handwritten musical notation for "THE HOTEL MIAMI-CARLTON" in treble clef, 3/4 time, with tempo marking *Valse*.

32 (Title) LOOK AT THAT BEAUTIFUL FARM..... A Mysterious Event (Zamecnik) ..... 2½ Min

Handwritten musical notation for "LOOK AT THAT BEAUTIFUL FARM" in treble clef, 3/4 time, with tempo marking *All.<sup>o</sup> mist.*. Copyright 1925 Sam Fox Publ.

33 (Action) BOYS GATHERED IN ROOM..... Hail, Hail, the Gang's All Here (Lake) ..... 3½ Min

Handwritten musical notation for "BOYS GATHERED IN ROOM" in treble clef, 2/4 time, with tempo marking *All.<sup>o</sup>*. Copyright 1918 C. Fischer.

SEGUE: ..... There'll Be a Hot Time (Beyer)

Handwritten musical notation for "SEGUE" in treble clef, 2/4 time, with tempo marking *Marcia*.

34 (Title) **WITH THE ZEST OF** *Lustful* Zip (Frey) ..... 2 Min.

*Galop*  

 Musical notation for 'WITH THE ZEST OF Zip (Frey)'. It is a galop in 2/4 time, marked 'mf'. The melody is written on a single staff. Copyright: 1925 Robbins & Engel.

35 (Title) **WHAT DO YOU MEAN**..... Turbulence (Borch) ..... 2½ Min.

*Agitato*  

 Musical notation for 'WHAT DO YOU MEAN Turbulence (Borch)'. It is in 3/4 time, marked 'mf'. The melody is written on a single staff. Copyright: 1918 J. M. Berg.

36 (Action) **BOYS LEFT ALONE ON PROPERTY** ..... Ain't It Funny What a Difference Just a Few Hours Make from "Yankee Consul (Robyn) ..... 2½ Min.

*Mod<sup>to</sup>*  

 Musical notation for 'BOYS LEFT ALONE ON PROPERTY'. It is in 2/4 time, marked 'mf'. The melody is written on a single staff. Copyright: M. Witmark & Sons.

37 (Title) **I DID'T LIKE TO TELL HIM**..... My Buddy (Donaldson) ..... ¾ Min.

*Tempo di valse*  

 Musical notation for 'I DID'T LIKE TO TELL HIM'. It is in 3/4 time, marked 'p-f'. The melody is written on a single staff. Copyright: 1922 J. H. Kernick.

38 (Action) **TOM RECEIVES LETTER** ..... All Alone (Berlin) ..... 1 Min.

*Valse lente*  

 Musical notation for 'TOM RECEIVES LETTER'. It is in 3/4 time, marked 'p'. The melody is written on a single staff. Copyright: 1924 J. Berlin.

39 (Title) **ARE YOU MR. TOM KELLY?**..... Babillage (Gillet) ..... 3 Min.

*All<sup>o</sup>*  

 Musical notation for 'ARE YOU MR. TOM KELLY?'. It is in 2/4 time, marked 'p-f'. The melody is written on a single staff. Copyright: 1889 Carl Fischer.

40 (Action) **WEST'S OFFICE-BUYER ENTERS**..... Batifolage (Baron) ..... 2½ Min.

*All<sup>o</sup> mod<sup>to</sup>*  

 Musical notation for 'WEST'S OFFICE-BUYER ENTERS'. It is in 2/4 time, marked 'p'. The melody is written on a single staff. Copyright: 1926 M. Baron.

41 (Action) **HOTEL CORRIDOR** ..... Marionette (Arndt) ..... 2 Min.

*All<sup>o</sup>*  

 Musical notation for 'HOTEL CORRIDOR'. It is in 2/4 time, marked 'p-f'. The melody is written on a single staff. Copyright: 1917 S. M. F. & P.

42 (Action) **COOLEY RUSHES FROM ROOM** ..... Clap Hands, Here Comes Charley (Meyer)..... 1 Min.

*All<sup>o</sup>*  

 Musical notation for 'COOLEY RUSHES FROM ROOM'. It is in 2/4 time, marked 'p-f'. The melody is written on a single staff. Copyright: 1925 Ager, Yellen + Bornstein.

43 (Action) **EVELYN APPEARS** ..... Repeat No. 1 "Florida" ..... 1½ Min.

*Mod<sup>to</sup>*  

 Musical notation for 'EVELYN APPEARS'. It is in 2/4 time, marked 'p-f'. The notation shows a few notes on a staff, followed by a repeat sign.

NOTE: You may substitute here "Don't Wake Me up, Let Me Dream," "Alone at Last" or "Yes, Sir, That's My Baby," at your discretion.

THE END

Country of Origin, U. S. A.

Complete orchestrations and single piano parts of each separate number contained hereon, can be purchased from CAMEO MUSIC SERVICE CORPORATION, 315-317 West 47th Street, New York City.