

Thematic Music  Cue Sheet

M. J. MINTZ (PATENT)
JULY 31, 1923.

ADOLPH ZUKOR and JESSE L. LASKY

present

AN ALLAN DWAN PRODUCTION
"NIGHT LIFE OF NEW YORK"

with

Rod La Rocque, Dorothy Gish, Ernest Torrence
and George Hackathorne

By Edgar Selwyn

Screen play by Paul Schofield

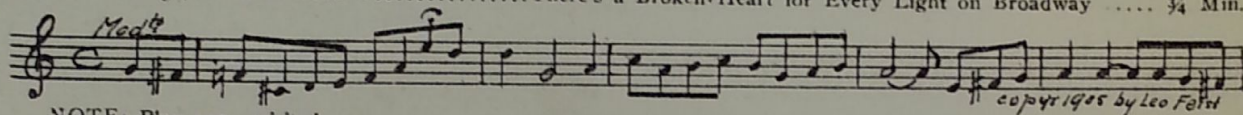
Music compiled by James C. Bradford

Footage 6998 feet

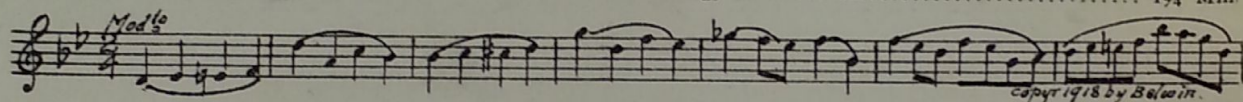


A Paramount Picture

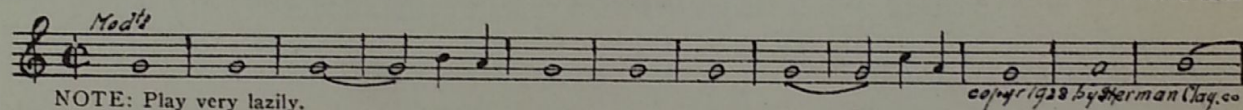
- 1 AT SCREENING There's a Broken Heart for Every Light on Broadway ¾ Min.



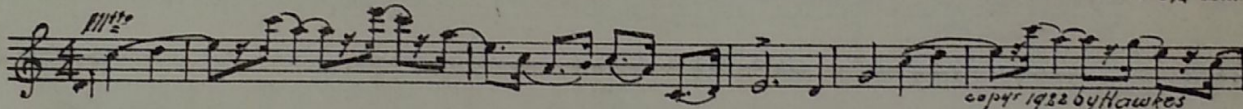
- 2 (Title) NINE A. M. Clematis (Tonning) 1¾ Min.



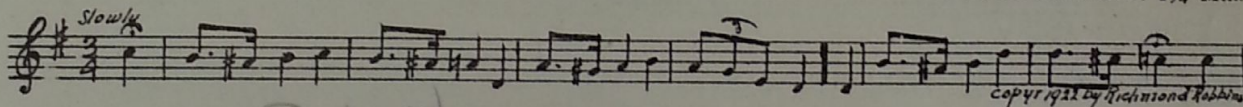
- 3 (Action) BUTLER ENTERS BEDROOM Sleep (Lebieg) 1 Min.



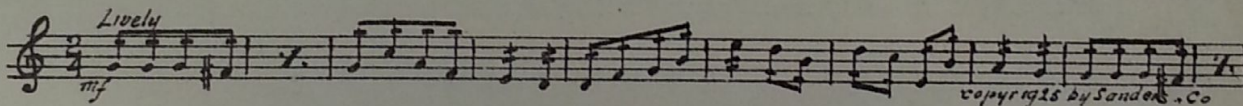
- 4 (Action) RONALD SITS ON SOFA WITH FATHER Fleurette d'Amour (Fletcher) 1¾ Min.



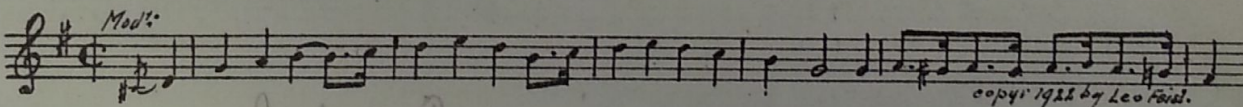
- 5 (Title) AS RONALD KNEW Sweet Genevieve (Tucker) 1¾ Min.



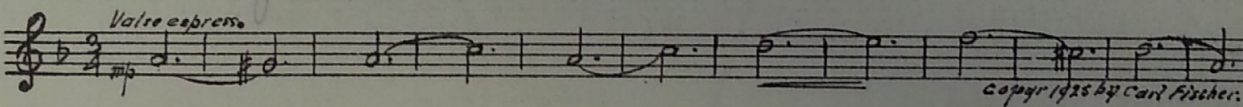
- 6 (Title) ONE-THIRTY P. M. Thrills (Sanders) 1¾ Min.



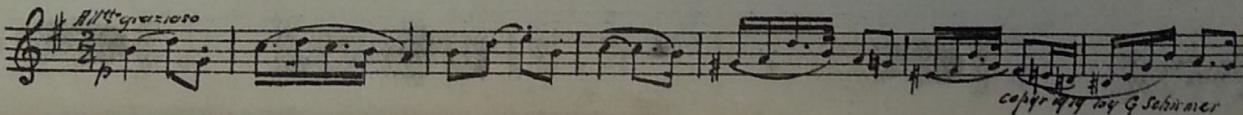
- 7 (Action) RONALD STOPS CAR The 19th Hole (Wenrich) ¾ Min.



- 8 (Title) TWO-THIRTY P. M. Valse Charmante (Chenoweth) 1¾ Min.



- 9 (Title) FOUR-THIRTY P. M. Bluette (Aitken) ¾ Min.



33 (Action) MR. WORKMAN AT DESK Souvenir d'Amour (Conte) 3/4 Min.

Musical notation for 'MR. WORKMAN AT DESK' in 2/4 time, marked *Molto*. Copyright 1924 by G. Schirmer.

34 (Action) RONALD ENTERS ROOM L'Encore (Herbert) 1/4 Min.

Musical notation for 'RONALD ENTERS ROOM' in 2/4 time, marked *Molto*. Copyright 1910 by M. Witmark & Sons.

35 (Title) THIS IS ONE OF THE COMMODORE TELEPHONE OPERATORS Pleading Love Theme (Bradford) 2/4 Min.

Musical notation for 'THIS IS ONE OF THE COMMODORE TELEPHONE OPERATORS' in 2/4 time, marked *Andite*. Copyright 1924 by Belwin.

36 (Action) JIMMY REMOVING JEWELS FROM PIANO ... Incid. Symphony No. 15 (Thomas) 1 Min.

Musical notation for 'JIMMY REMOVING JEWELS FROM PIANO' in 2/4 time, marked *Andite con moto*. Copyright 1923 by Photo Play Music Co.

37 (Title) YOU DIRTY LITTLE SNEAK An Argument (Breil) 1/4 Min.

Musical notation for 'YOU DIRTY LITTLE SNEAK' in 2/4 time, marked *Andite vivacito*. Copyright 1924 by Sonnenschein Music.

NOTE: Start at second strain—catch two pistol shots.

38 (Title) JOHN BENTLEY HAD CHANGED Repeat No. 5 "Sweet Genevieve" 2 1/2 Min.

Musical notation for 'JOHN BENTLEY HAD CHANGED' in 2/4 time, marked *Slowly*.

39 (Action) HE SEES OLD SWEETHEART She May Have Seen Better Days "Old Timers" (Lake) 1/2 Min.

Musical notation for 'HE SEES OLD SWEETHEART' in 2/4 time, marked *Valse*. Copyright by Carl Fischer.

NOTE: Play a la burlesque.

40 (Title) WHERE THERE IS LOVE Repeat Theme No. 13 1 Min.

Musical notation for 'WHERE THERE IS LOVE' in 2/4 time, marked *Valse lento*.

41 (Action) FLASH-BACK TO OLD FOLKS Stephanie Gavotte (Czibulka) 3/4 Min.

Musical notation for 'FLASH-BACK TO OLD FOLKS' in 2/4 time, marked *Molto*. Copyright 1924 by Carl Fischer.

42 (Action) FATHER PICKS UP TELEPHONE My Best Girl (Donaldson) 3/4 Min.

Musical notation for 'FATHER PICKS UP TELEPHONE' in 2/4 time, marked *Molto*. Copyright 1923 by Jerome Kern.

43 (Action) MADGE AND RONALD ENTER Somebody (Little) 1 Min.

Musical notation for 'MADGE AND RONALD ENTER' in 2/4 time, marked *All. giusto*. Copyright 1919 by Maurice Strakosck.

NOTE: Play "PP" until Title: "I Know Why."

44 (Title) TAKE HER OUT AND BUY HER Repeat Theme No. 13 3/4 Min.

THE END

Country of Origin U. S. A.

Complete Orchestrations and single parts of all compositions contained herein can be purchased from CAMEO MUSIC SERVICE CORPORATION, 112-118 West 44th Street, New York City