

Thematic Music  Cue Sheet

M. J. MINTZ (PATENT)
JULY 31, 1923.



ADOLPH ZUKOR and JESSE L. LASKY

present

A WILLIAM deMILLE Production
BEBE DANIELS

in

"THE SPLENDID CRIME"

with

Neil Hamilton

From the story by William deMille

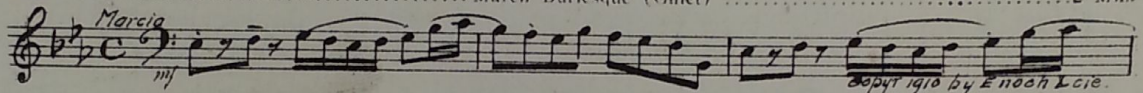
Screen play by Violet Clark

Music compiled by James C. Bradford

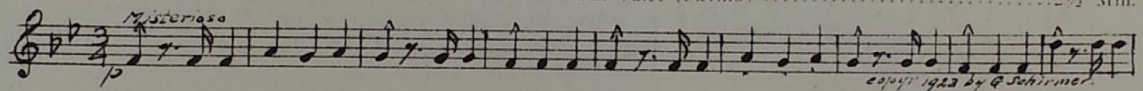
Footage 6102 feet

A Paramount Picture

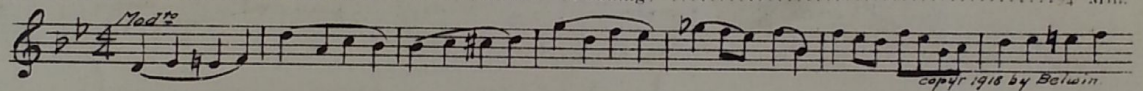
- 1 AT SCREENING March Burlesque (Gillet) 2 Min.

Marcia

Copyright 1916 by Enoch Lorie.

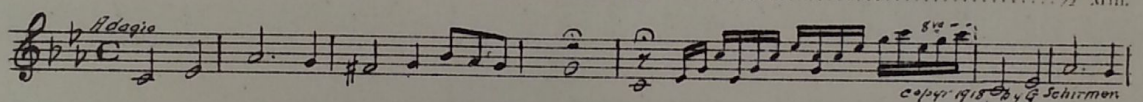
- 2 (Action) OFFICER APPEARS Misterioso alla Valse (Savino) 2 1/2 Min.

Misterioso

Copyright 1923 by G. Schirmer.

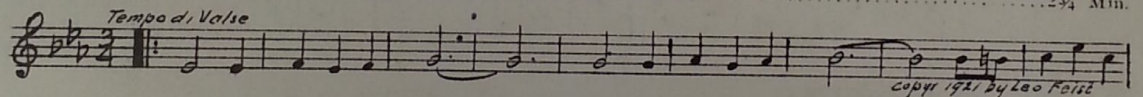
- 3 (Action) MAGGIE AND DUGAN ENTER ROOM Ciematis (Tonning) 3/4 Min.

Mod^{to}

Copyright 1916 by Belwin.

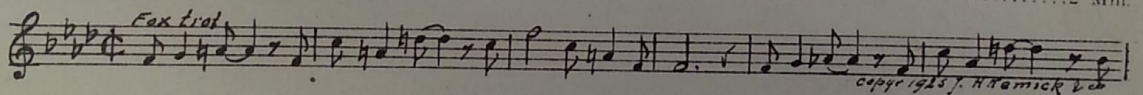
- 4 (Action) KNOCK AT DOOR Elegie (Lubomirsky) 1/2 Min.

Adagio

Copyright 1918 by G. Schirmer.

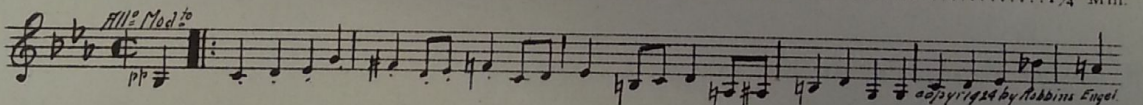
- 5 (Title) NOTE: Play first movement only, muted brass, omit cadenzas
KELLY, A WIDE AWAKE YOUNG MAN Mickey O'Neil (Nelson) 2 3/4 Min.

Tempo di Valse

Copyright 1921 by Leo Feist.

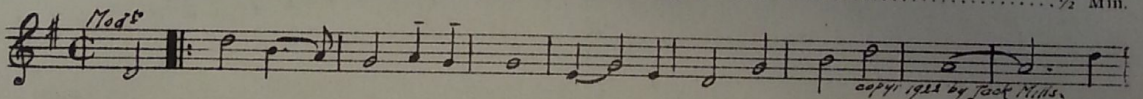
- 6 (Title) AFTER THE NOISE AND SQUALOR Sweet Georgia Brown (Pinkard) 2 Min.

Fax trat

Copyright 1925 by H. Kramick & Co.

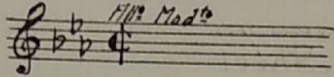
- 7 (Action) JOHNNY AND GIRL FLOP ON SOFA Misterioso Burlesque (Savino) 1 1/4 Min.

All^o Mod^{to}

Copyright 1924 by Robbins Engel.

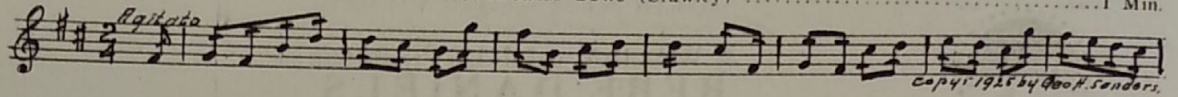
- (Title) MARY THE HOUSEKEEPER Maggie Blues (McHugh) 1/2 Min.

Mod^{to}

Copyright 1921 by Jack Mills.

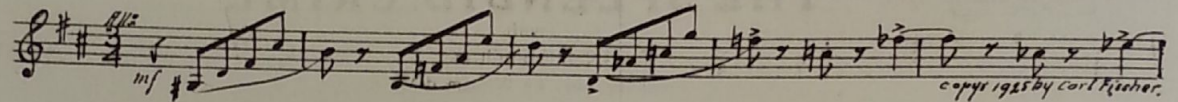
9 (Action) FLASH-BACK TO CROOKS Repeat No. 7 "Misterioso Burlesque" 1½ Min



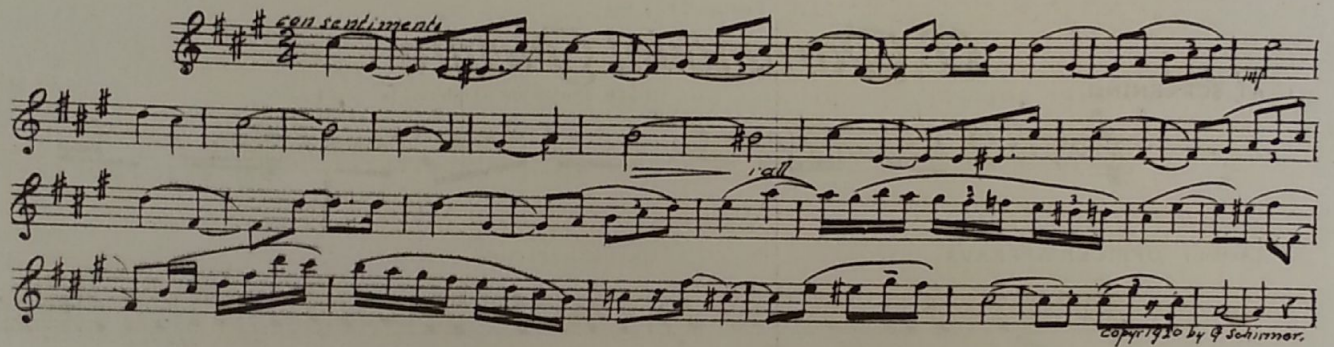
10 (Action) CROOKS AT GATE Restless Bows (Srawley) 1 Min.



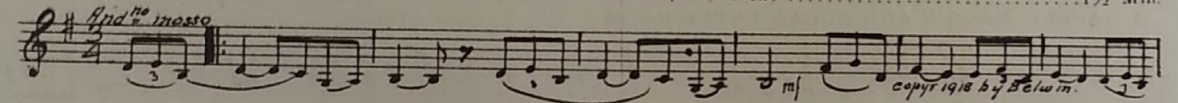
11 (Title) SAY, DON'T YOU BIRDS EVER GO The Jester's Serenade (Herbert) 2 Min



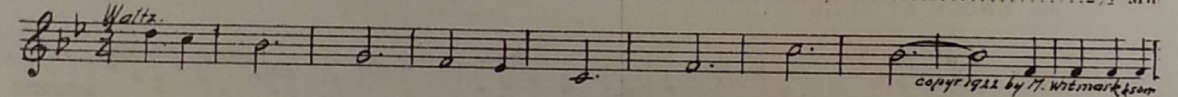
12 (Action) TOM PICKS UP TELEPHONE THEME: Love Song (Wright) 3½ Min.



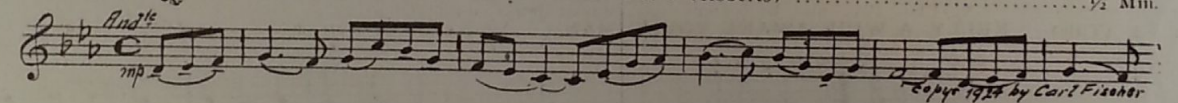
13 (Action) MAGGIE LEAVES Serenade Romantique (Borch) 1½ Min.



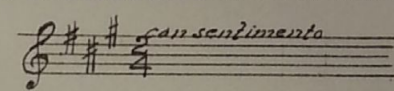
14 (Action) MAGGIE ENTERS ROOM—STARTS TO PACK. Nellie Kelly I Love You (Cohan) 2½ Min



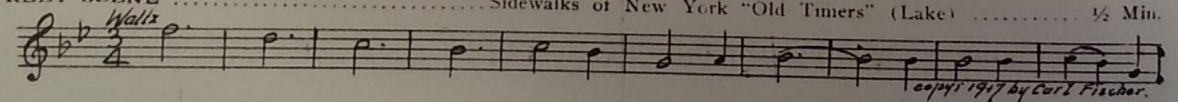
(Action) MAGGIE OFFERS TO SHAKE HANDS Film Theme No. 7 (Roberts) ½ Min.



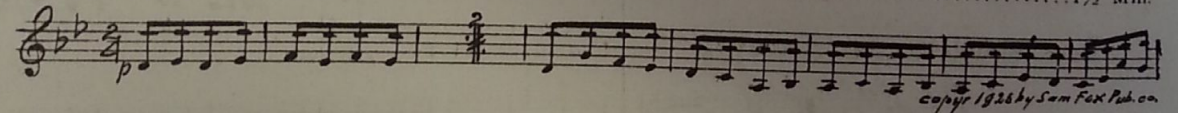
16 (Title) SO MAGGIE FINDS Repeat Theme No. 12 1½ Min.



17 (Action) STREET SCENE Sidewalks of New York "Old Timers" (Lake) ½ Min.



18 (Action) WAIF PICKS UP BILL AND RUNS AWAY Evil Plotter (Zamecnik) 1½ Min.



19 (Title) WELL, IF IT AIN'T THE "MAGPIE" Omens (Schad) 1 1/4 Min.

All^o mod^o, con ritmo

 Musical notation for 'WELL, IF IT AIN'T THE "MAGPIE"'. It features a treble clef, a key signature of one sharp (F#), and a common time signature (C). The tempo is marked 'All^o mod^o, con ritmo'. The music consists of a single melodic line with eighth and sixteenth notes. A copyright notice at the bottom right reads 'copyr 1918 by Geo. H. Sanders'.

20 (Action) OFFICER CLOSÉS DOOR Little Man (Ball) 3 Min.

Barcarola

 Musical notation for 'OFFICER CLOSÉS DOOR'. It features a treble clef, a key signature of one sharp (F#), and a 3/8 time signature. The tempo is marked 'Barcarola'. The music consists of a single melodic line with eighth and sixteenth notes. A copyright notice at the bottom right reads 'copyr 1921 by Witmark'.

21 (Title) WHERE THE WOMAN DOESN'T ALWAYS PAY Fleurette d'Amour (Fletcher) 3/4 Min.

All^o

 Musical notation for 'WHERE THE WOMAN DOESN'T ALWAYS PAY'. It features a treble clef, a key signature of one sharp (F#), and a 2/4 time signature. The tempo is marked 'All^o'. The music consists of a single melodic line with eighth and sixteenth notes. A copyright notice at the bottom right reads 'copyr 1921 by Hachos & Son'.

22 (Title) THIS IS MISS VAN DYKE Repeat Theme No. 12 2 Min.

con sentimento

 Musical notation for 'THIS IS MISS VAN DYKE'. It features a treble clef, a key signature of one sharp (F#), and a 2/4 time signature. The tempo is marked 'con sentimento'. The music consists of a single melodic line with quarter notes.

23 (Title) OLD MARY ENTERS Repeat No. 8 "Maggie Blues" 1/2 Min.

Mod^o

 Musical notation for 'OLD MARY ENTERS'. It features a treble clef, a key signature of one sharp (F#), and a 2/4 time signature. The tempo is marked 'Mod^o'. The music consists of a single melodic line with quarter notes.

24 (Action) OLD MARY LEAVES ROOM Memories (Van Alstyne) 1 1/4 Min.

Mod^o

 Musical notation for 'OLD MARY LEAVES ROOM'. It features a treble clef, a key signature of one sharp (F#), and a 3/8 time signature. The tempo is marked 'Mod^o'. The music consists of a single melodic line with eighth and sixteenth notes. A copyright notice at the bottom right reads 'copyr 1918 by J. H. Remick'.

(Title) ONE AFTERNOON When Irish Eyes Are Smiling (Ball) 1 1/2 Min.

Tempo di valse

 Musical notation for 'ONE AFTERNOON'. It features a treble clef, a key signature of one sharp (F#), and a 3/4 time signature. The tempo is marked 'Tempo di valse'. The music consists of a single melodic line with quarter and eighth notes. A copyright notice at the bottom right reads 'copyr by W. Witmark & Son'.

26 (Action) TOM WALKS FROM ROOM Heart Throbs (Herbert) 3 3/4 Min.

Lento espress.

 Musical notation for 'TOM WALKS FROM ROOM'. It features a treble clef, a key signature of one flat (Bb), and a common time signature (C). The tempo is marked 'Lento espress.'. The music consists of a single melodic line with quarter and eighth notes. A copyright notice at the bottom right reads 'copyr 1925 by Carl Fischer'.

27 (Title) TO PROTECT THE CASH FROM THIEVES ... Repeat Theme No. 12 2 1/2 Min.

con sentimento

 Musical notation for 'TO PROTECT THE CASH FROM THIEVES'. It features a treble clef, a key signature of one sharp (F#), and a 2/4 time signature. The tempo is marked 'con sentimento'. The music consists of a single melodic line with quarter notes.

28 (Action) OLD CROOK AT TABLE Danse Arabe (Tschaiikowsky) 1 Min.

All^o

 Musical notation for 'OLD CROOK AT TABLE'. It features a treble clef, a key signature of one flat (Bb), and a 3/8 time signature. The tempo is marked 'All^o'. The music consists of a single melodic line with eighth and sixteenth notes. A copyright notice at the bottom right reads 'copyr 1917 by Carl Fischer'.

29 (Title) WILL YOU DO A JOB WITH Dancin' on the Green (Fletcher) 1 Min.

With rhythmic acc.

 Musical notation for 'WILL YOU DO A JOB WITH'. It features a treble clef, a key signature of one flat (Bb), and a 2/4 time signature. The tempo is marked 'With rhythmic acc.'. The music consists of a single melodic line with eighth and sixteenth notes. A copyright notice at the bottom right reads 'copyr 1919 by Chappel & Co'.

30 (Title) THERE IS NOT ALWAYS SAFETY IN NUMBERS Melisande (Sibelius) 3 Min.

And^{te} con moto

 Musical notation for 'THERE IS NOT ALWAYS SAFETY IN NUMBERS'. It features a treble clef, a key signature of one flat (Bb), and a 2/4 time signature. The tempo is marked 'And^{te} con moto'. The music consists of a single melodic line with quarter and eighth notes. A copyright notice at the bottom right reads 'copyr 1926 by Schlosinger'.

NOTE: Play "PP" con sordini.

31 (Title) INVESTIGATION It Is Night (Black) 2 Min.

Musical notation for item 31, featuring a treble clef, key signature of two flats, and a 2/4 time signature. The tempo marking is *And.^{te}*. The music consists of a single melodic line. Copyright notice: *copyr 1920 by G. Sahirmor.*

32 (Title) LET ME SPEAK TO HER ALONE Repeat Theme No. 12 3/4 Min.

Musical notation for item 32, featuring a treble clef, key signature of two sharps, and a 2/4 time signature. The tempo marking is *consentimento*. The music consists of a single melodic line.

33 (Title) OH SAY, I GOT A GOLD BADGE Until My Luck Comes Rolling Along (Cohan) 1/2 Min.

Musical notation for item 33, featuring a treble clef, key signature of two flats, and a 2/4 time signature. The tempo marking is *Mod.^{to}*. The music consists of a single melodic line. Copyright notice: *copyr 1923 by W. H. Wilmart & Esna*

34 (Action) MISS VAN DYKE AND BOY FRIEND ON SOFA Me and the Boy Friend (Monaco) 3/4 Min.

Musical notation for item 34, featuring a treble clef, key signature of two flats, and a 2/4 time signature. The tempo marking is *All.^{to}*. The music consists of a single melodic line. Copyright notice: *copyr 1924 by J. H. Kemick.*

35 (Action) MAGGIE DESCENDING STAIRS All Alone (Berlin) 1/2 Min.

Musical notation for item 35, featuring a treble clef, key signature of two flats, and a 2/4 time signature. The tempo marking is *Valse lente*. The music consists of a single melodic line. Copyright notice: *copyr 1924 by Irving Berlin.*

36 (Title) ONE EVENING Repeat No. 20 "Little Man" 3/4 Min.

Musical notation for item 36, featuring a treble clef, key signature of two sharps, and a 2/4 time signature. The tempo marking is *Barcarole*. The music consists of a single melodic line.

37 (Action) TOM ENTERS ROOM Cupid's Garden (Eugene) 1/2 Min.

Musical notation for item 37, featuring a treble clef, key signature of two sharps, and a 2/4 time signature. The tempo marking is *And.^{te} Mod.^{to}*. The music consists of a single melodic line. Copyright notice: *Pub. by E. Hascher.*

38 Title I'M GOING TO BE MARRIED THEME: Love Song (Wright) 2 1/2 Min.

Musical notation for item 38, featuring a treble clef, key signature of two sharps, and a 2/4 time signature. The tempo marking is *consentimento*. The music consists of three staves of melodic notation. Copyright notice: *copyr 1920 by G. Sahirmor.*

THE END

Country of Origin, U. S. A.

Complete Orchestrations and single parts of all compositions contained herein can be purchased from CAMEO MUSIC SERVICE CORPORATION, 112-118 West 44th Street, New York City