

8/19

Thematic Music Cue Sheet

M. J. MINTZ (PATENT)  
JULY 31, 1923.

ADOLPH ZUKOR and JESSE L. LASKY  
present

CLARA BOW  
in  
"DANGEROUS CURVES"

with  
RICHARD ARLEN

Directed by Lothar Mendes  
Story by Lester Cohen

Adaptation by Donald Davis and Florence Ryerson  
B. P. Schulberg, General Manager, West Coast Productions  
Compiled by James C. Bradford  
Footage 7395 feet



A Paramount Picture

- 1 AT SCREENING ..... The Get-Away (Frey) ..... 1 1/2 Min.

*Galop*  
 *Copyright 1925 Robbins Music Corp*

- 2 (Title) LADIES AND GENTLEMEN ..... Gangway (Kaufman) ..... 1 Min.

*March*  
 *Copyright 1926 Robbins Music Corp*

- 3 (Title) AND PATRICIA ..... Cheer Up (Kaufman) ..... 2 Min.

*One Step*  
 *Copyright 1927 Irving Berlin*

- 4 (Action) LARRY ENTERS ZARA'S TENT ..... ZARA THEME: Serenade (Rachmaninoff) ..... 3/4 Min.

*Sostenuto*

*Copyright 1918 Carl Fischer*

- 5 (Title) AND NOW LADIES AND GENTLEMEN ..... Black Jack (Donaldson) ..... 1 Min.

*Marcia*

Copyr. 1927 Irving Berlin

- 6 (Action) LARRY STARTS UP LADDER ..... Le Reve de l'Apache (Donaldson) ..... 2¼ Min.

*Valse*

Copyr. 1927 Irving Berlin

- 7 (Action) PATRICIA AND ASSOCIATES ON GROUND... PATRICIA THEME: Allies from "Princess Pat" Waltzes (Herbert) ..... 1½ Min.

*Valse*

Copyr. 1915 Witmark & Sons

- 8 (Action) ZARA AT BREAKFAST—LARRY ENTERS.... ZARA THEME: Serenade (Rachmaninoff) ..... 2¼ Min.

*Sostenuto*

Copyr. 1918 Carl Fischer

- 9 (Action) FLASH-BACK TO CIRCUS ..... Andante Amoroso (Axt) ..... 1¼ Min.

*Andte*

Copyr. 1926 Robbins Music Cor.

- 10 (Action) REHEARSING ACROBATS ..... Gatherings (Savino) ..... 1 Min.

*All mod's*

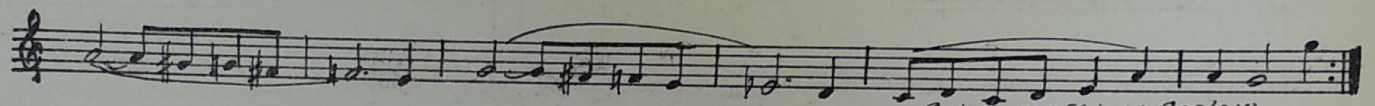
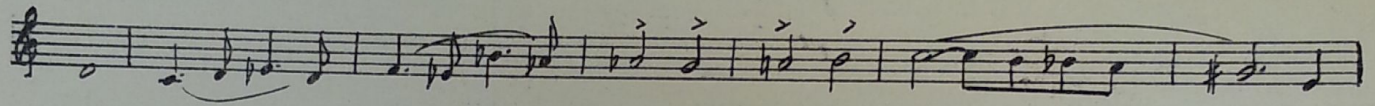
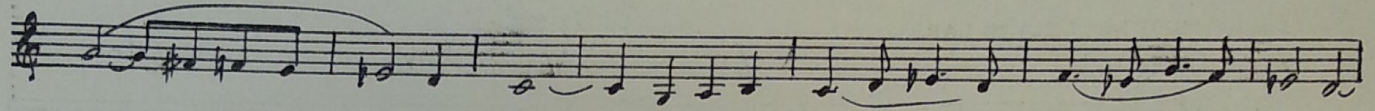
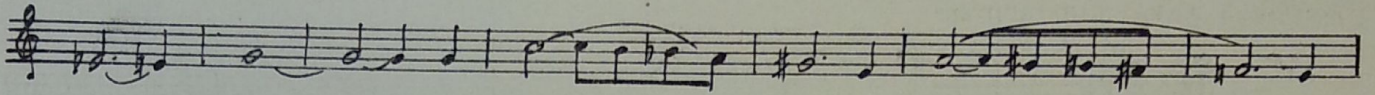
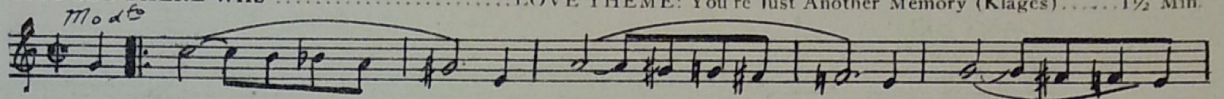
Copyr. 1928 Robbins Music Cor.

- 11 (Title) SURE IT'S EASY ..... PATRICIA THEME: Allies from "Princess Pat" Waltzes (Herbert) ..... 2¼ Min.

*Valse*

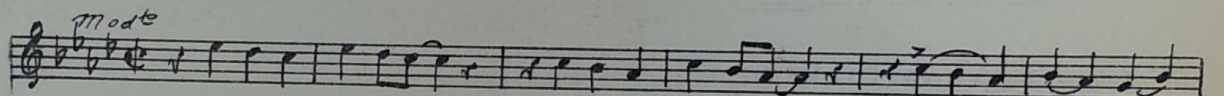
Copyr. 1915 Witmark & Sons

12 (Title) SUPPOSE THERE WAS ..... LOVE THEME: You're Just Another Memory (Klages) ..... 1½ Min.



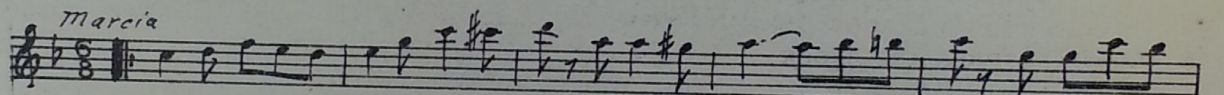
Copyr. 1929 Spier & Coslow

13 (Title) THEM JOHNS THAT WROTE YOU ..... Until You Get Somebody Else (Donaldson) ..... 3¾ Min.



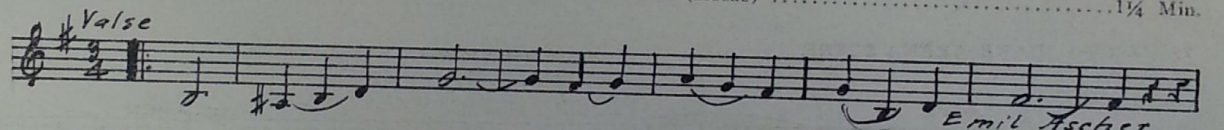
Copyr. 1929 Donaldson, Douglas, Gumbel

14 (Action) FLASH-BACK TO CIRCUS GROUNDS ..... Stone Mountain (Donaldson) ..... 3 Min.



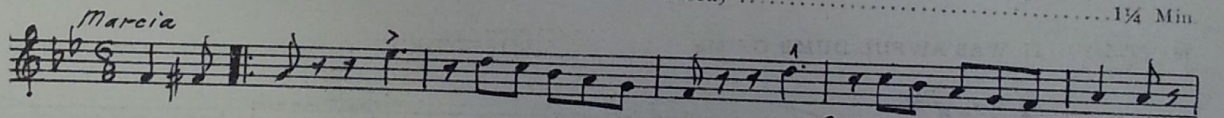
Copyr. 1928 Irving Berlin

15 (Action) LARRY UP ROPE TO PLATFORM ..... Over the Waves (Rosas) ..... 1¼ Min.  
NOTE: Play "PP" for all scenes except arena.



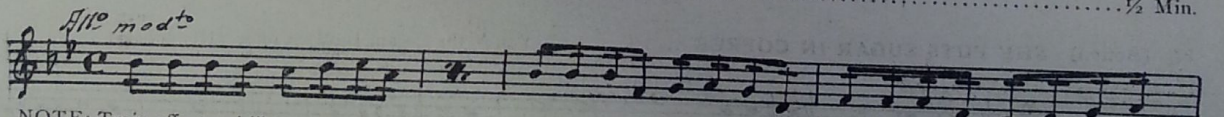
Emil Ascher

16 (Action) BAND STARTS TO PLAY ..... Chevrons (Donaldson) ..... 1¼ Min.  
NOTE: Watch for roll on side Drum; silence as Larry falls from wire—Timpany thud as he strikes ground.



Copyr. 1928 Irving Berlin

17 (Action) NIGHT SCENE—TRAIN PASSES ..... Rustic Allegro (Savino) ..... ½ Min.  
NOTE: Play "PP" for dramatic and pathetic sequences.



NOTE: Train effects ad lib.

Copyr. 1923 G. Schirmer

18 (Title) I CAN'T HELP IT .....Song Without Words (Rebikoff) .....2¼ Min.

Handwritten musical notation for "I CAN'T HELP IT" in treble clef, 2/4 time, key of G major. Includes the tempo marking "And<sup>te</sup>". Copyright: 1918 G. Schirmer.

19 (Action) LARRY AND "SPIDER" .....Still Waters (Bradford) .....3 Min.

Handwritten musical notation for "LARRY AND 'SPIDER'" in treble clef, 4/4 time, key of B-flat major. Includes the tempo marking "And<sup>te</sup>". Copyright: 1929 Sam Fox.

20 (Action) "SPIDER" LEAVES LARRY .....Somebody's Sweetheart (Zamecnik) .....1¼ Min.

Handwritten musical notation for "'SPIDER' LEAVES LARRY" in treble clef, 3/4 time, key of B-flat major. Includes the tempo marking "Valse mod<sup>to</sup>". Copyright: 1928 Sam Fox.

21 (Title) "SPIDER", SEND THIS WIRE .....Baker's Boy and the Chimney Sweep (Herbert) .....1 Min.

Handwritten musical notation for "'SPIDER', SEND THIS WIRE" in treble clef, 2/4 time, key of B-flat major. Includes the tempo marking "Valse". Copyright: 1914 G. Schirmer.

22 (Action) PATRICIA ENTERS LARRY'S ROOM .....LOVE THEME: You're Just Another Memory (Klages).....3 Min.

Handwritten musical notation for "PATRICIA ENTERS LARRY'S ROOM" in treble clef, 4/4 time, key of B-flat major. Includes the tempo marking "Mod<sup>to</sup>". Copyright: 1929 Spier & Coslow.

23 (Title) I KNEW YOU'D COME THROUGH .....Babilage (Gillet) .....1½ Min.

Handwritten musical notation for "I KNEW YOU'D COME THROUGH" in treble clef, 4/4 time, key of G major. Includes the tempo marking "Alleg<sup>ro</sup>". Copyright: Carl Fischer.

24 (Action) PATRICIA AND BROCK .....PATRICIA THEME: Allies from "Princess Pat" Waltzes (Herbert) .....1 Min.

Handwritten musical notation for "PATRICIA AND BROCK" in treble clef, 4/4 time, key of G major. Includes the tempo marking "Valse". Copyright: 1915 Witmark & Sons.

25 (Action) DARK ARENA SCENE .....Chanson Algerian (Bradford) .....2¼ Min.

Handwritten musical notation for "DARK ARENA SCENE" in treble clef, 4/4 time, key of B-flat major. Includes the tempo marking "And<sup>te</sup>". Copyright: 1926 Sam Fox.

26 (Title) IT WAS AWFUL DUMB OF ME .....LOVE THEME: You're Just Another Memory (Klages).....2¾ Min.

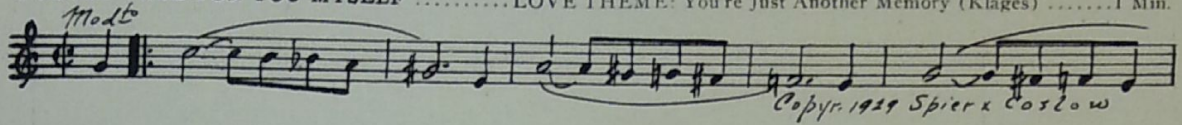
Handwritten musical notation for "IT WAS AWFUL DUMB OF ME" in treble clef, 4/4 time, key of B-flat major. Includes the tempo marking "Mod<sup>to</sup>". Copyright: 1929 Spier & Coslow.

27 (Action) SHE PUTS SUGAR IN COFFEE .....You're the Cream In My Coffee (Henderson) .....1½ Min.

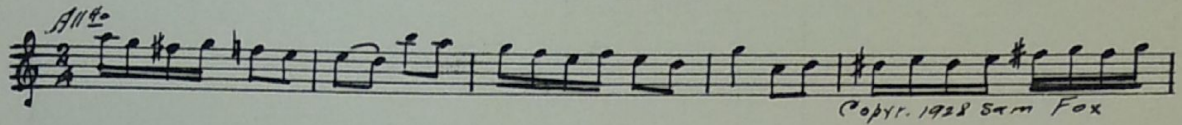
Handwritten musical notation for "SHE PUTS SUGAR IN COFFEE" in treble clef, 4/4 time, key of B-flat major. Includes the tempo marking "Mod<sup>to</sup>". Copyright: 1928 De Sylva, Brown & Henderson.

NOTE: Play "PP" throughout entire sequence.

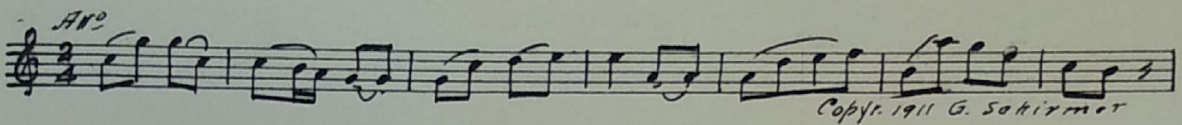
28 (Title) I COULD FALL FOR YOU MYSELF ..... LOVE THEME: You're Just Another Memory (Klages) ..... 1 Min.



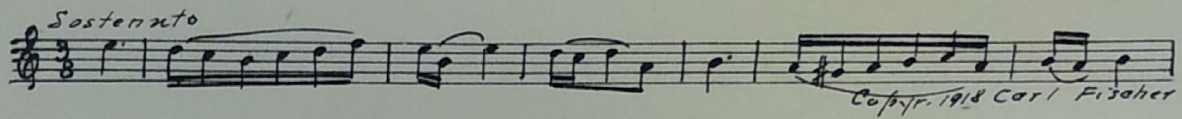
29 (Action) PATRICIA CLIMBS UP LADDER ..... Surprise (Zamecnik) ..... 3/4 Min.



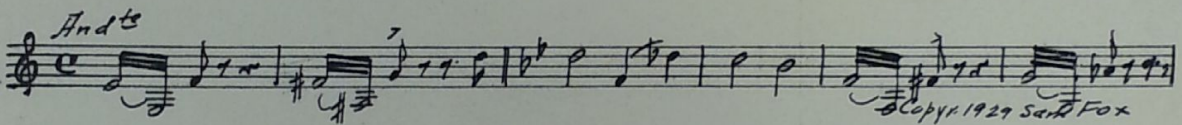
30 (Action) LARRY HURRIES FROM ARENA ..... Le Retour (Bizet) ..... 3/4 Min.



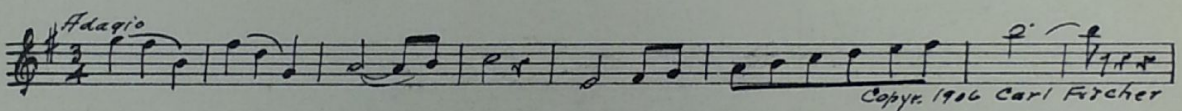
31 (Action) ZARA APPEARS WITH LARRY ..... ZARA THEME: Serenade (Rachmaninoff) ..... 3/4 Min.



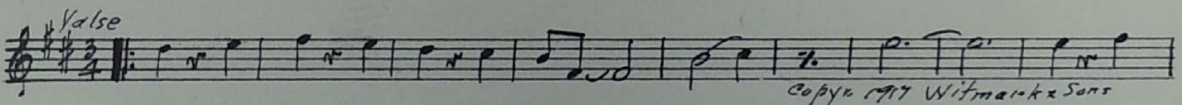
32 (Action) PATRICIA SEES ZARA AND LARRY ..... The Protest (Bath) ..... 2/4 Min.



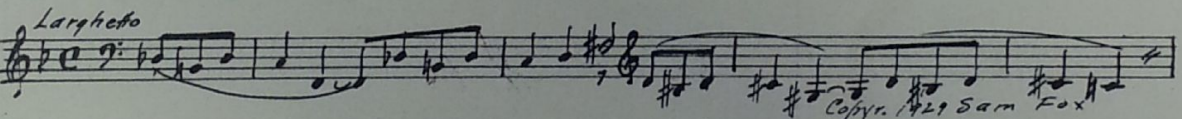
33 (Title) LARRY'S TAKEN ZARA BACK ..... The Swan (St. Saens) ..... 1/2 Min.



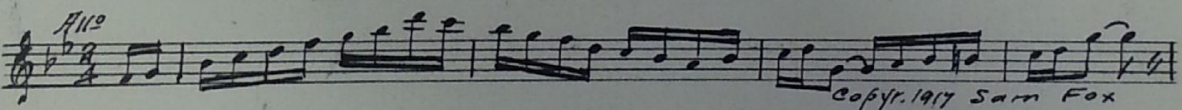
34 (Title) NOW CALM DOWN PAT ..... PATRICIA THEME: Allies from "Princess Pat" Waltzes (Herbert) ..... 1/4 Min.



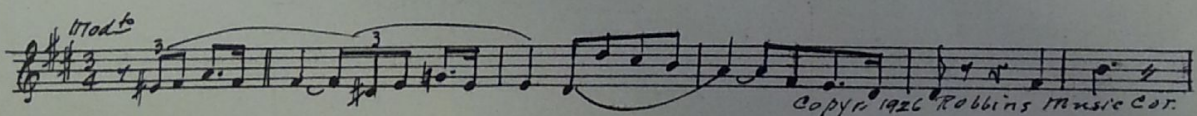
35 (Action) ZARA IN APARTMENT ..... Lamento Drammatico (Drigo) ..... 3/2 Min.



36 (Action) PATRICIA DRESSING FOR ARENA ..... Marionette (Arndt) ..... 2/4 Min.



37 (Title) MR. LEE SAYS IF YOU GET A MOMENT ..... Poetic Moderato (Berge) ..... 1 Min.



- 38 (Title) I JUST WANTED TO LET YOU KNOW .....Adventure d'Amour (Bradford) .....1¾ Min.

*All<sup>o</sup> 1*

Copyright 1927 Robbins Music Cor.

- 39 (Title) YOU'RE A SWELL GIRL PAT .....LOVE THEME: You're Just Another Memory (Klages).....½ Min.

*Moderato*

Copyright 1929 Spier & Coslow

- 40 (Action) EXTERIOR—LARRY DRINKING .....Broken Vows (Howgill) .....3 Min.

*Andte*

Copyright 1928 Lafl eur & Son

- 41 (Action) FLASH TO ARENA .....Over the Waves (Rosas) .....1¾ Min.

*Valse*

Emil Archer

- 42 (Title) NOTE: Watch for roll on side Drum; play "PP" throughout sequence.  
PAT WENT ON FOR YOU .....Appassionata (Clutsam) .....¾ Min.

*All<sup>o</sup>*

Copyright 1926 Hawkes & Son

- 43 (Action) PATRICIA LEAVING FRIENDS .....Amorous Adventure (Bradford) .....1¼ Min.

*Tranquillo*

Copyright 1928 Sonnemann Music Co

- 44 (Title) "SPIDER" TOLD ME .....LOVE THEME: You're Just Another Memory (Klages).....1½ Min.

*Moderato*

Copyright 1929 Spier & Coslow

Country of Origin, U. S. A.

THE END

Complete orchestrations and single piano parts of each separate number contained hereon, can be purchased from CAMEO MUSIC SERVICE CORPORATION, 315-317 WEST 47TH STREET, NEW YORK CITY.