

9/9



M.J. MINTZ (PATENT)
JULY 31, 1923.



NORMA SHEARER



THEIR OWN DESIRE

with
BELLE BENNETT, LEWIS STONE and ROBERT MONTGOMERY

From the novel by Sarita Fuller

Screen play by Frances Marion

Directed by E. Mason Hopper

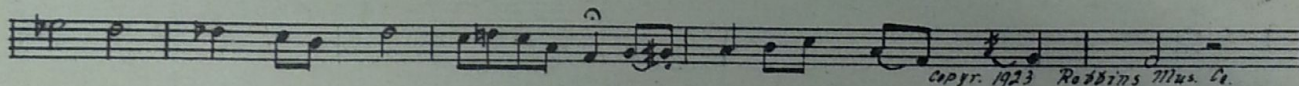
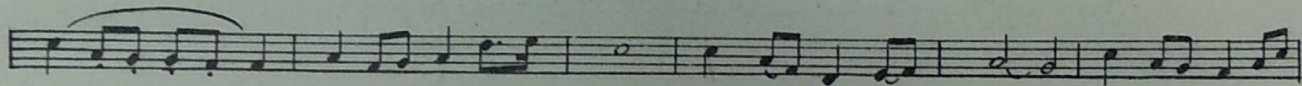
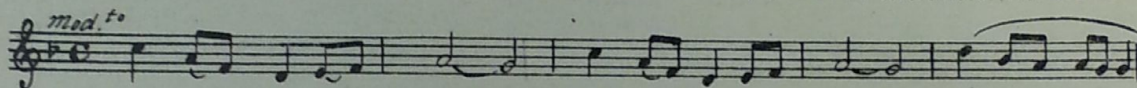
Compiled by Ernst Luz

A METRO-GOLDWYN-MAYER PICTURE

Length of film 6 reels (4975 feet)

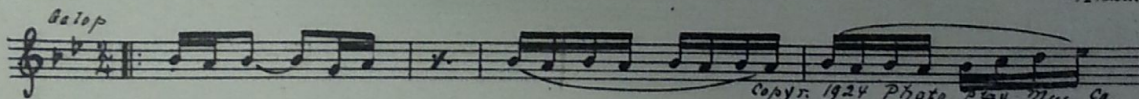
Maximum projection time 1 hour, (approx.)

1. AT SCREENING Loves Sweet Hour (Bowers) (WHITE) 1 Min.



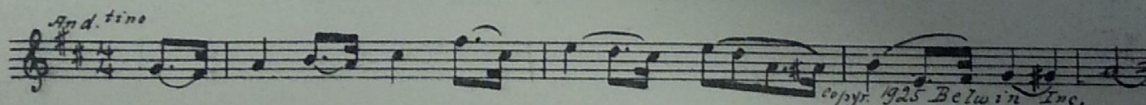
Copyr. 1923 Robbins Mus. Co.

- 2 (Title) A PRACTICE GAME The Roller Coaster (Schertzing) 1½ Min.



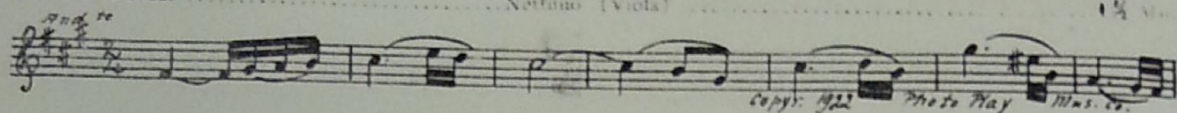
Copyr. 1924 Photo Play Mus. Co.

- 3 (Action) GIRL FALLS OFF HORSE Autumn Voices (Bassett) 2¾ Min.

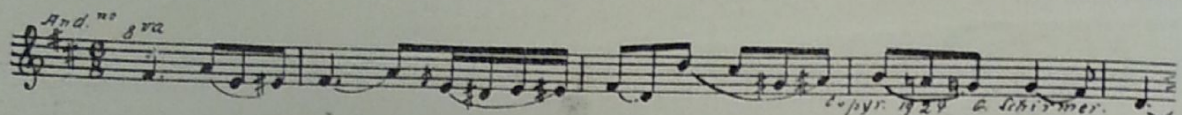


Copyr. 1925 Belwin Inc.

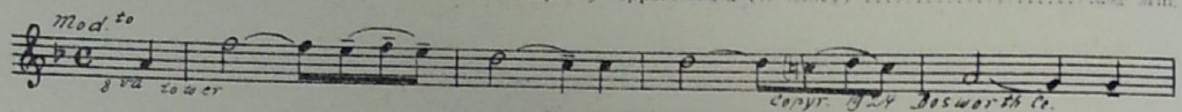
- 4 (Title) I'M SORRY DEAR Nettuno (Viola) 1 1/4 Min.



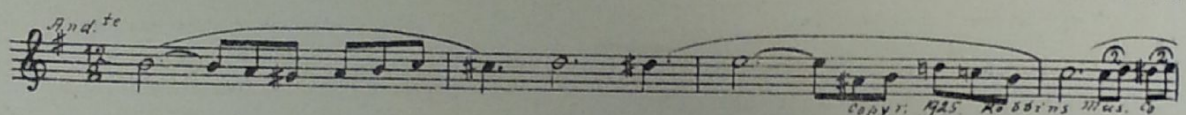
- 5 (Title) LOOKS LIKE A Tone Picture (Hass) 2 1/4 Min.



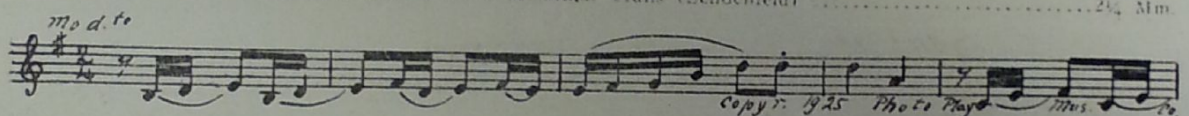
- 6 (Action) DAUGHTER SEES FATHER AND WOMAN EMBRACE Rhapsody Appassionata (Ketchey) 2 1/4 Min.



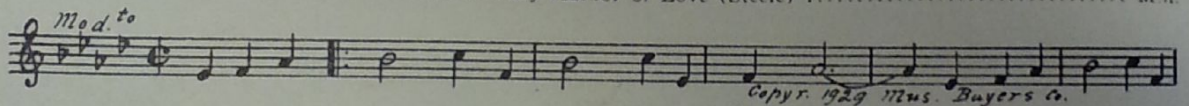
- 7 (Title) DO YOU THINK Emotional Andante (Axt) 3 1/4 Min.



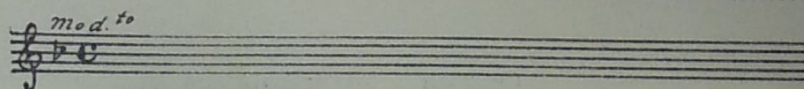
- 8 (Title) LAKESHORE Mountain Trails (Schoenfeld) 2 1/4 Min.



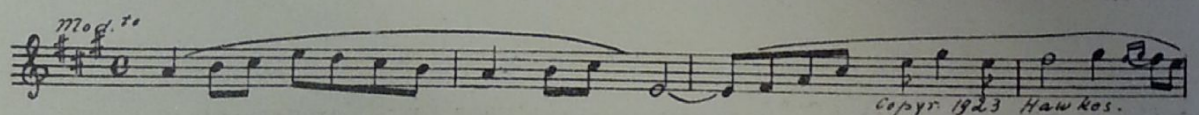
- 9 (Title) I KNOW A PIG My Harbor of Love (Steele) 1 Min.



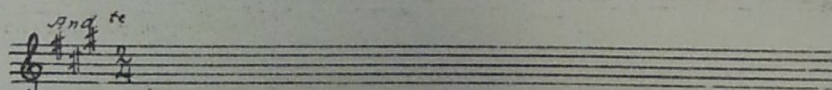
- 10 (Title) NOW WHAT—CAVEMAN Repeat No. 1 (WHITE) 2 1/4 Min.



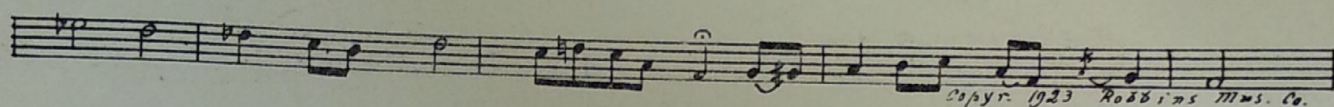
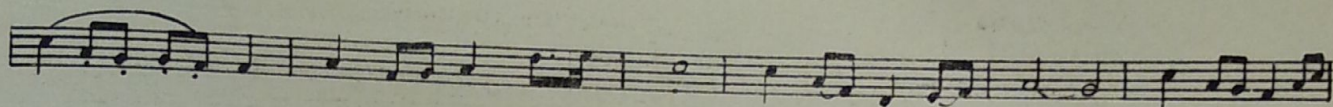
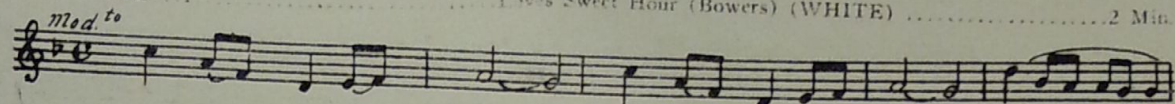
- 11 (Action) GIRL ENTERING BEDROOM DOOR An Evening Song (Wood) 2 1/4 Min.



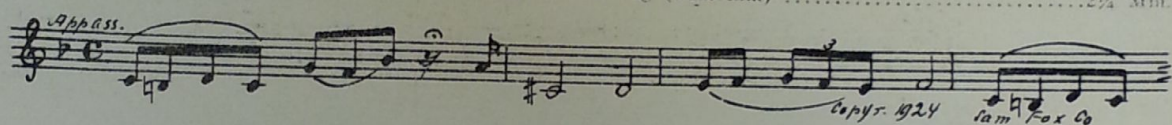
- 12 (Action) BEDROOM LAMP TURNED OUT AFTER GIRL GETS INTO BED Repeat No. 4 "Nettuno" 3 1/4 Min.



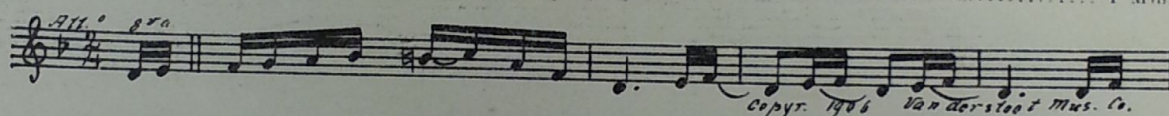
- 13 (Title) I WAS A FOOL 1908 Sweet Hour (Bowers) (WHITE) 2 Min



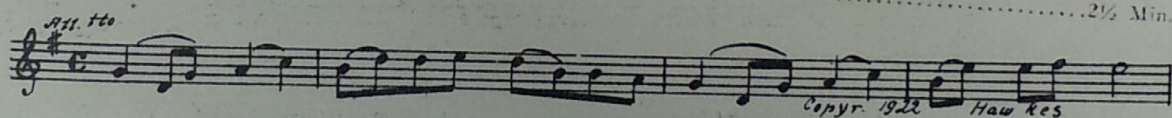
- 14 (Title) SURE HE'S DOCTOR CHEEVER The Awakening (Zamecnik) 2 1/4 Mm



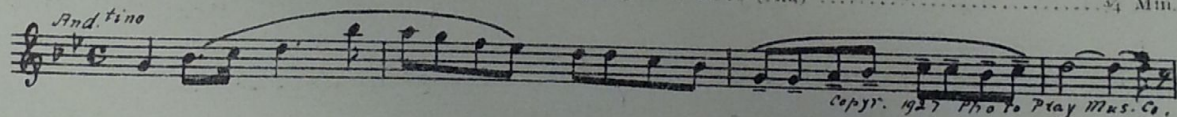
- 15 (Title) OKAY BY ME Jelly Sweethearts (Losey) 1 Min.



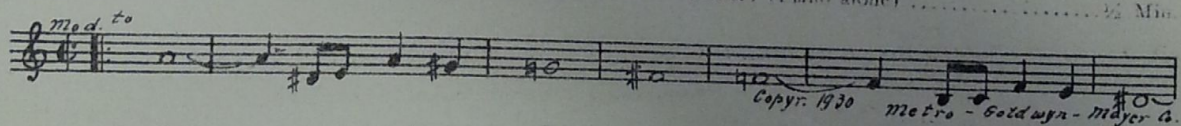
- 16 (Title) NOW YOU'RE GOING TO LISTEN.....Sad Thoughts (Haines)2½ Min.



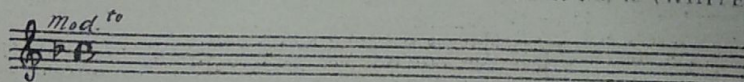
- 17 (Title) OKAY BY ME Sweet Thoughts of Love (Alu) 34 Min.



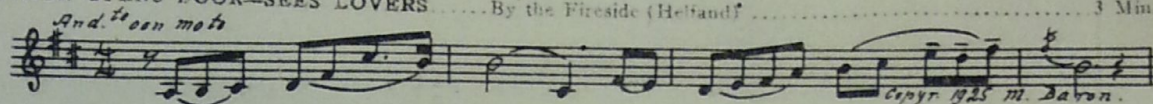
- 18 (Action) FADE TO GIRL AT PIANO Blue is the Night (Fisher) (Piano alone) 2 1/2 Min.



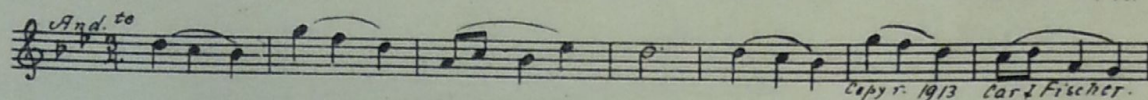
- 19 (Title) I KNOW SWEETHEART Repeat No. 13 (WHITE) 19 Min.
A mod. to



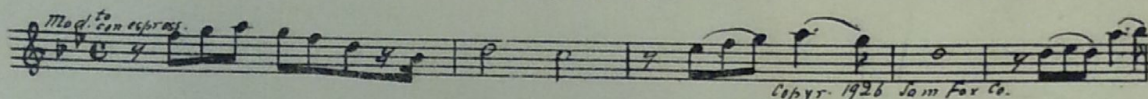
- 20 (Action) MOTHER OPENS DOOR—SEES LOVERS By the Fireside (Heltand) 3 Min.



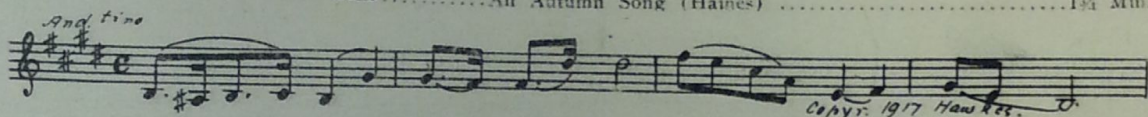
- 21 (Title) OH, THAT WOMAN Dawn of Hope (De Casella) 2½ Min.



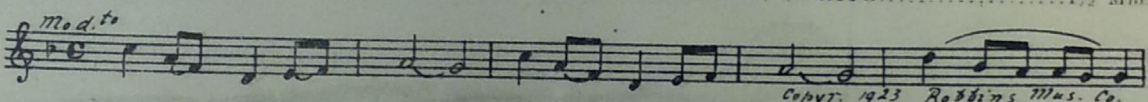
- 22 (Title) I'M ALL RIGHT Parting Kiss (Spitalny) 3¼ Min.



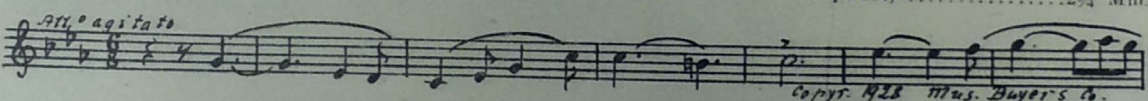
- 23 (Action) MOTHER AND DAUGHTER IN BED An Autumn Song (Haines) 1¾ Min.



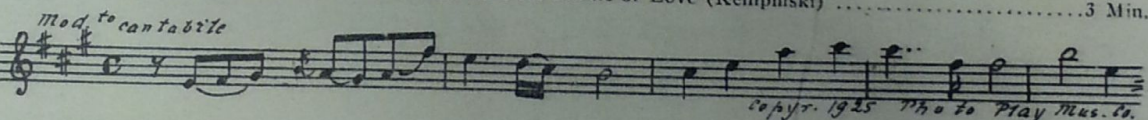
- 24 (Action) GIRL SEES LOVER IN GARDEN Loves Sweet Hour (Bowers) (WHITE) 1½ Min.



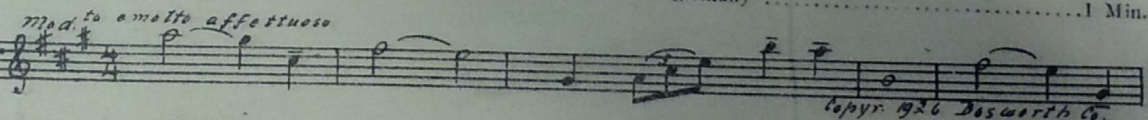
- 25 (Action) CANOE SEEN IN WATER Symphonic Incidentals No. 18 (Marquardt) 2¾ Min.



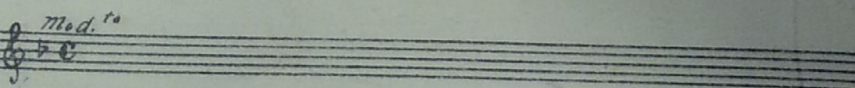
- 26 (Action) FATHER RINGS DOORBELL At the Shrine of Love (Kempinski) 3 Min.



- 27 (Action) AVIATORS REACH LOVERS A Love Scene (Engleman) 1 Min.



- 28 (Title) HE'S GOING TO BE ALL RIGHT Repeat No. 24 (WHITE) 1 Min.



THE END

Proper orchestral rest period is Nos. 18 to 23 inclusive.

NOTE: The repetition of numbers in this cue sheet is simplified by the use of the "LUZ" SYMPHONIC COLOR GUIDE, sold by Music Buyers Corporation, 1520 Broadway, New York City. The color suggested for repetition designates the Mood or Emotion, and is used as a code for such repetitions.

Complete orchestrations and single piano parts of each separate number contained hereon, can be purchased from AFFILIATED SOUND RECORDINGS, INC., 1780 BROADWAY, NEW YORK CITY.