

Sen



M. J. MINTZ (PATENT)
JULY 31, 1923.

Richard A. Rowland

presents

BILLIE DOVE

“ADORATION”

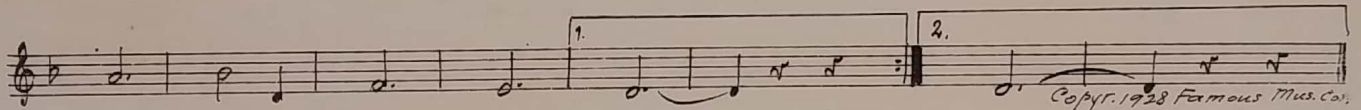
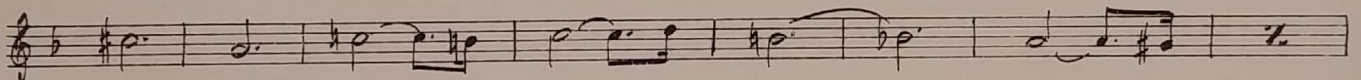
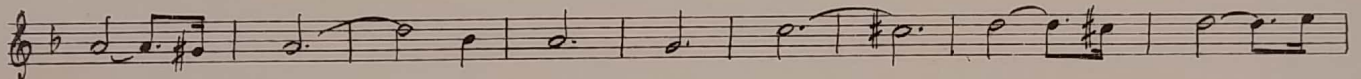
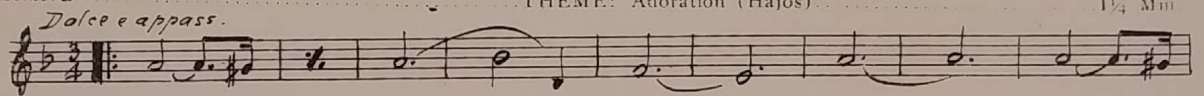
Story by Lajos Biro

A Frank Lloyd Production

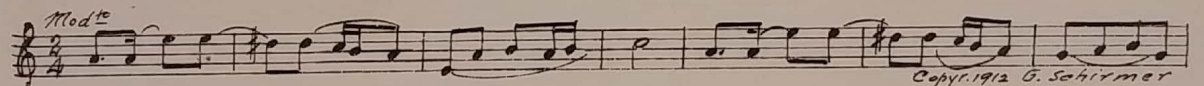
Compiled by James C. Bradford

A FIRST NATIONAL PICTURE

1 AT SCREENING THEME: Adoration (Hajos) 1 1/4 Min

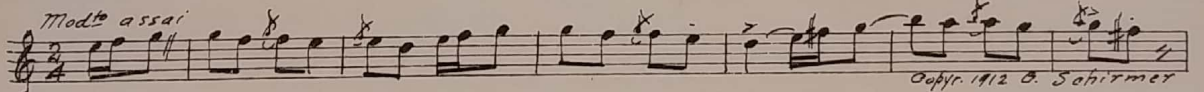


2 (Title) PRINCE SERGEI Cossack Lullaby (Jiranek) 1/2 Min

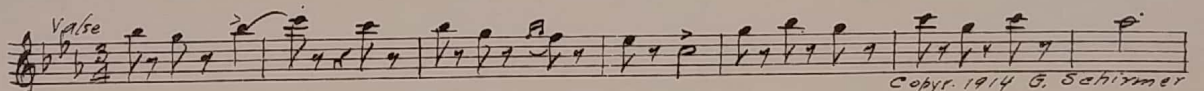


3 (Action) INSERT—MEDALLION OF PRINCESS ELENA Repeat Theme No. 1 3/4 Min

4 (Title) NINETTE Polka from "The Bartered Bride" (Smetana) 1 1/4 Min



5 (Action) CAR DRIVES TO CURB Baker's Boy and the Chimney Sweep (Herbert) 1 1/2 Min



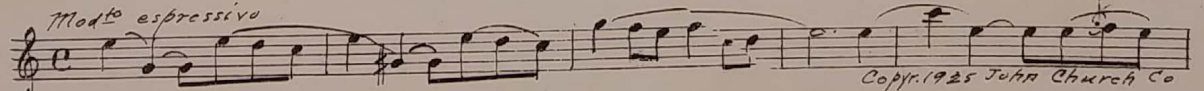
6 (Action) NINETTE IN WINDOW FLIRTING Repeat No. 4 "Polka" 1/2 Min

7 (Title) HER HIGHNESS HAS ARRIVED SIR Serenade (Chaminade) 2 1/4 Min



8 (Action) SHE TURNS AND SEES SERGEI Repeat Theme No. 1 1 Min

9 (Action) THEY BREAK—SERGEI SHOWS JEALOUSY Chansonnette (Huerter) 1 3/4 Min



TH

TH

TH

10 (Action) INSERT—INVITATION Polonaise (Tschaikowsky) 2 Min.

To di Polacca
 Musical notation for Polonaise (Tschaikowsky) in 3/4 time, key of D major. The score shows a single melodic line with various rhythmic patterns and dynamics.
Copyr. 1911 G. Schirmer

11 (Title) ARISTOCRATS La Fille du Contrebandier (Mouton) 1/2 Min

Andte maestoso
 Musical notation for La Fille du Contrebandier (Mouton) in 3/4 time, key of D major. The score features a melodic line with a steady rhythm.
Manus Music Co

12 (Title) MUD HURLED BY BEASTS Allegro Precipitoso (Savino) 1/4 Min

All^o
 Musical notation for Allegro Precipitoso (Savino) in 3/4 time, key of D major. The score is characterized by a fast, rhythmic melody.
Copyr. 1923 G. Schirmer

13 (Action) FLASH TO INTERIOR—ORCHESTRA STARTS Marche Russe (Ganne) 1/2 Min
NOTE: Start moderately and "P"; gradually work up for street rioting.

Modto ben marcato
 Musical notation for Marche Russe (Ganne) in 4/4 time, key of D major. The score includes a melodic line with a strong, marching-like character.
Copyr. 1901 Carl Fischer

14 (Action) DANCING STARTS Russian Life Waltz (Katz) 3/4 Min
NOTE: Play in Grand March style.

Valse lente
 Musical notation for Russian Life Waltz (Katz) in 3/4 time, key of D major. The score features a waltz-style melody.
Copyr. 1915 Carl Fischer

15 (Title) YOU ARE THE MOST BEAUTIFUL WOMAN Russian Romance (Friml) 2 1/4 Min

Andte modto
 Musical notation for Russian Romance (Friml) in 4/4 time, key of D major. The score consists of a slow, romantic melody.
Copyr. 1910 G. Schirmer

16 (Action) SERGEI APPEARS IN DOORWAY The Captive (Savino) 1/2 Min

Grave e sostenuto
 Musical notation for The Captive (Savino) in 4/4 time, key of D major. The score is a slow, dramatic piece.
Copyr. 1927 Robbins Music Corp.

17 (Action) ELENA IN BOUDOIR Slavic Dance No. 10 (Dvorak) 2 1/4 Min

All^o grazioso
 Musical notation for Slavic Dance No. 10 (Dvorak) in 3/4 time, key of D major. The score is a lively dance piece.
Copyr. 1910 G. Schirmer

18 (Action) PRINCE OPENS DOOR Repeat Theme No. 1 1 1/2 Min

7A

Dolce e appassion.
 Musical notation for Repeat Theme No. 1 in 3/4 time, key of D major. The score shows a few notes on a staff.
Copyr. 1910 G. Schirmer

19 (Action) SATCHEL BEING STRAPPED Romance (Rubenstein) 2 1/2 Min

Andte con moto
 Musical notation for Romance (Rubenstein) in 4/4 time, key of D major. The score is a slow, romantic melody.
Copyr. 1920 Carl Fischer

20 (Action) RIOTING IN STREET STARTS Furioso No. 4 (Bergunker) 2 1/4 Min

Presto
 Musical notation for Furioso No. 4 (Bergunker) in 4/4 time, key of D major. The score is a fast, rhythmic piece.
Copyr. 1927 G. Schirmer

21 (Title) SCATTERED REMNANTS Invano (Amadei) 1/2 Min
NOTE: Machine guns, rifle shots and general rioting effects.

All^o
 Musical notation for Invano (Amadei) in 4/4 time, key of D major. The score is a fast, rhythmic piece.
Copyr. Emil Fischer

22 (Title) ELENA AS A MANNIKEN Love Song (Wright)..... 1 1/4 Min.

Con sentimento

Copyr. 1920 G. Schirmer

23 (Action) ELENA MEETS OLD GENERAL ON STREET Romanza senza Parole (Micheli)..... 2 3/4 Min

All^o mosso

Copyr. 1928 D. Rafter

24 (Action) ENTRANCE TO CAFE RUSSE The Cossacks' Wedding Fete (Krem) 3/4 Min

All^o mod^o

Copyr. 1926 Hawkes & Son

25 (Title) NOTE: Play on Balalaika instruments. IVAN. WHAT'S ALL THE BUNK La Czarine (Ganne)..... 1 1/4 Min.

Mazurka

Copyr. Carl Fischer

26 (Action) ELENA AND GENERAL ENTER Nocturnal Tangier (Godowsky)..... 3/4 Min.

And^o espress.

Copyr. 1920 G. Schirmer

27 (Title) I'M BEGINNING TO FEAR Film Theme No. 47 (Van Goens-Borch)..... 1 1/4 Min

And^o con moto

Copyr. 1924 Carl Fischer

28 (Action) FLASH TO CAFE A La Mode (Rosey)..... 3/4 Min.

All^o vivo

Belwin Inc

29 (Title) HEY, CAVIER! La Guapa (Buisson)..... 1 1/4 Min

All^o vivo

Copyr. Edw. B. Marks

30 (Action) NOTE: Play "PP" throughout this sequence. ELENA APPEARS ON STAIRS Dans la Montagne (Fourdrain)..... 3 1/2 Min.

Largament sost.

Copyr. Choudens

31 (Action) SERGEI TAKES OUT PISTOL Valse Triste (Sibelius)..... 1/2 Min.

Lento

Copyr. 1926 Carl Fischer

32 (Title) NOTE: Play second strain only "PP" slowly and mysteriously. YOU ARE NOT YOURSELF Repeat No. 11 "La Fille du Contrebandier"..... 1 Min

33 (Action) ELENA RISES FROM TABLE Repeat Theme No. 1..... 1/2 Min

34 (Action) ENTER TAXI Pain of Sorrow (Bradford)..... 1 1/2 Min

And^o

Copyr. 1928 Carl Fischer

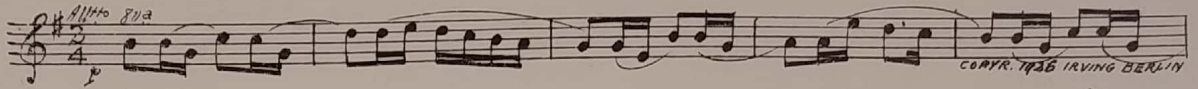
35 (Action) FLASH-BACK TO CAFE Repeat Theme No. 1..... 1 Min

36 (Action) GAMBLING HOUSE Valse Slave (Savasta)..... 3/4 Min

Valse

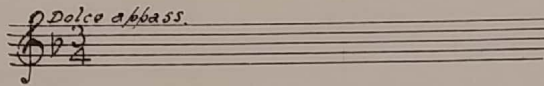
Copyr. Joe W. Stern & Co

37 (Action) RESS Rural Russia (Levenson)..... 2 Min



38 (Action) SERGEI ENTERS Repeat Theme No. 1..... 1½ Min

TH

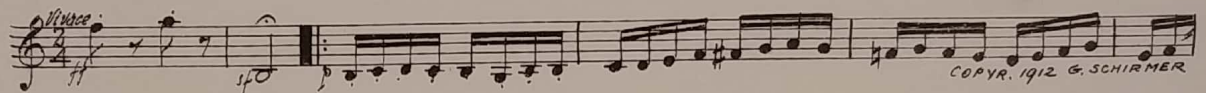


39 (Action) LIGHTS EXTINGUISHED Cossack Revels (Tschakoff)..... ½ Mi

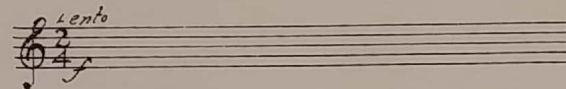
Leave out



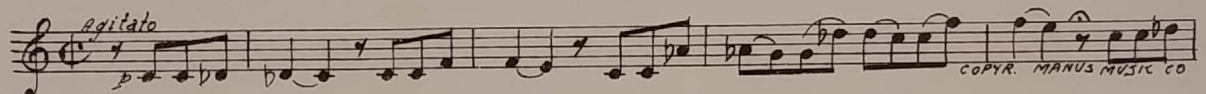
40 (Action) SERGEI KNOCKS TRAY FROM ELENA'S HANDS Dance of the Comedians from "The Bartered Bride"..... ½ Min



41 (Action) DANCING STARTS AGAIN..... Repeat No. 39 "Cossack Revels"..... ¼ Min



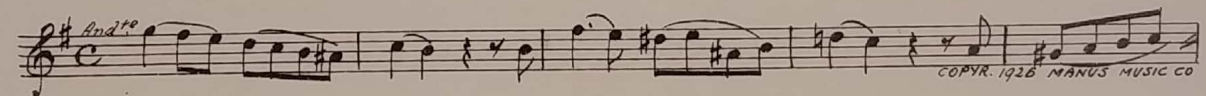
42 (Action) EXTERIOR—ENTER CAR Decevant mirage (Gabriel Marie)..... 3¼ Min



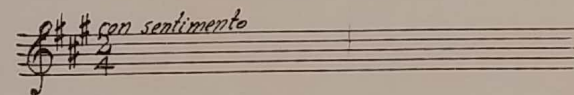
43 (Action) SERGEI ENTERS ROOM..... Tragic Andante (Savino)..... 1¼ Min



44 (Title) A PERSON ABOUT TO DIE..... Lamento from Eugene Onegin (Tschaiakowsky)..... 1½ Min



45 (Action) ELENA LYING ON COUCH..... Repeat No. 22 "Love Song"..... ½ Min

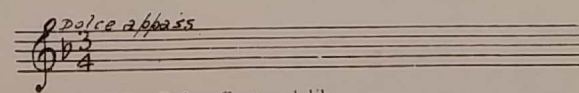


46 (Action) INTERIOR OF CAFE RUSSE La Reine D'un Jour (Mouton)..... ¾ Min



47 (Action) SERGEI WAITING WITH CAB FOR ELENA..... Repeat Theme No. 1..... 1 Min

TH



NOTE: Rain effects ad lib.

THE END

Printed in U. S. A

Complete orchestrations and single piano parts of each separate number contained hereon, can be purchased from CAMEO MUSIC SERVICE CORPORATION, 315-317 WEST 47TH STREET, NEW YORK CITY.