

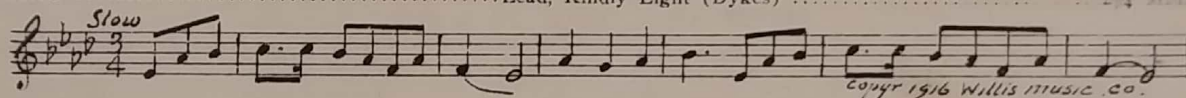
*Widdie
Chimes
Saf
Girls
Harmony
Have*



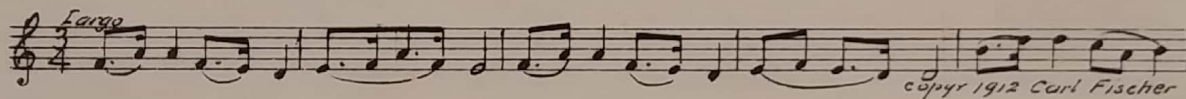
WILLIAM SISTROM
presents
LEATRICE JOY
in
"THE ANGEL OF BROADWAY"

with
VICTOR VARCONI
May Robson and Clarence Burton
From a Story by Lenore J. Coffee
Directed by Lois Weber
Produced by DeMille Pictures Corporation
Compiled by Rudolph Berliner
Pathe Exchange, Inc.
Distributor

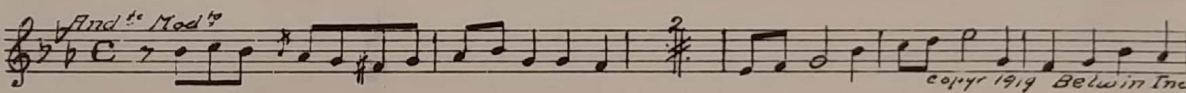
1 AT SCREENINGLead, Kindly Light (Dykes) 2¼ Min.



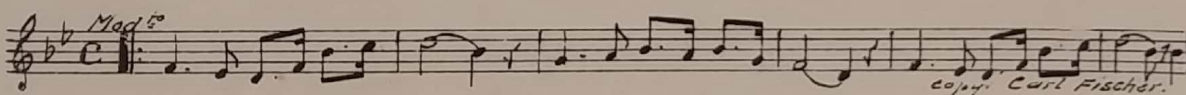
2 (Action) JERRY LOOKS AT GIRL BESIDE HIMLargo from New World's Symphony (Dvorak) ½ Min.



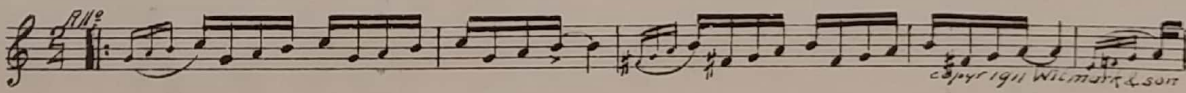
3 (Action) PEOPLE WALKING IN STREETBudding Spring (Platzmann) ½ Min.



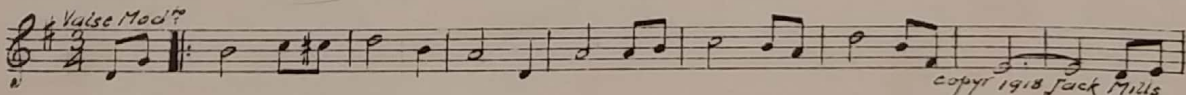
4 (Action) BAND STARTS PLAYINGGlory, Glory, Hallelujah (Steffe) (Direct Cue)..... 2½ Min.



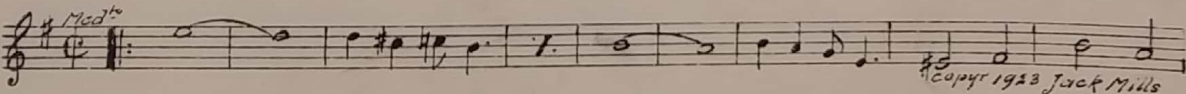
5 (Action) TAXI SEEN AT CURBRed Pepper (Lodge) 1¼ Min.



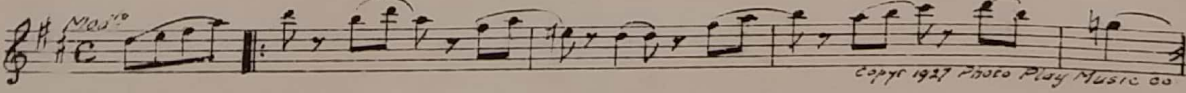
6 (Action) JERRY GETS IN MOTOR TRUCKJust a Girl That Men Forget (Garren) 2¾ Min.



7 (Action) AFTER GERTIE ENTERS HOUSEBroadway (Dubin) 1½ Min.



8 (Action) BABE PUTS BONNET ONMiss Mischief (Kempinski) 2¼ Min.



9 (Action) PEOPLE AT TABLES SEEN Gold and Silver (Lehar) 1¼ Min.

Valse
 Musical notation for 'Gold and Silver' in 2/4 time, marked 'Valse'. Copyright 1911 Carl Fischer.

10 (Action) GIRLS COME RUNNING IN Roll 'Em Girls (Heath) 1¼ Min.

Mod^{to}
 Musical notation for 'Roll 'Em Girls' in 2/4 time, marked 'Mod^{to}'. Copyright 1925 Joe Morris Music Co.

11 (Action) SHIMMY DANCER SEEN Ukulele Lady (Whiting) ¼ Min.

Jazz
 Musical notation for 'Ukulele Lady' in 2/4 time, marked 'Jazz'. Copyright 1925 Irving Berlin Inc.

12 (Action) BABE AND MAN IN DRESSING ROOM A Lesson In Flirtation (Roberts) 3½ Min.

All^o grazioso
 Musical notation for 'A Lesson In Flirtation' in 2/4 time, marked 'All^o grazioso'. Copyright 1901 Edw. Schuberth & Co.

13 (Title) EACH NIGHT FOUND Come to the Fountain (Stebbins) 2 Min.

Musical notation for 'Come to the Fountain' in 2/4 time. Copyright John Church & Co.

14 (Title) I BIN A DRUNK I'm a Pilgrim 1¾ Min.

Mod^{to}
 Musical notation for 'I'm a Pilgrim' in 2/4 time, marked 'Mod^{to}'. Copyright 1887 Carl Fischer.

15 (Action) BAND STARTS PLAYING Holy Ghost, With Light Divine (Gottschalk) (Direct Cue) ¾ Min.

Relig^{to}

Musical notation for 'Holy Ghost, With Light Divine' in 2/4 time. Copyright John Church & Co.

NOTE: The lyrics "Follow Me" were written to fit this composition.
16 (Title) DOUGHNUTS Potato Bug Parade (Cobb) 1 Min.

All^o Mod^{to}
 Musical notation for 'Potato Bug Parade' in 2/4 time, marked 'All^o Mod^{to}'. Copyright 1910 Walter Jacobs.

17 (Action) JERRY SEIZES MAN Furioso (Savino) 1 Min.

Furioso
 Musical notation for 'Furioso' in 2/4 time, marked 'Furioso'. Copyright 1928 Robbins Music Corp.

18 (Action) BABE AND JERRY SIT DOWN Melodie (Tschaiakowsky) 4¼ Min.

Mod^{to} con moto
 Musical notation for 'Melodie' in 3/4 time, marked 'Mod^{to} con moto'. Copyright 1913 Carl Fischer.

19 (Action) BABE AND JERRY OUTSIDE DOOR Pierrette Flirts (Fresco) 2¾ Min.

All^o
 Musical notation for 'Pierrette Flirts' in 2/4 time, marked 'All^o'. Copyright Belwin Inc.

20 (Title) SO SALVATION SAL Soubrette (Silbert) ½ Min.

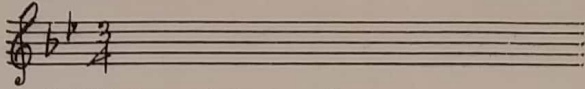
All^o
 Musical notation for 'Soubrette' in 2/4 time, marked 'All^o'. Copyright 1926 Emil Ascher, Inc.

21 (Action) SHE STARTS SINGING Repeat No. 15 "Holy Ghost, With Light Divine" (Direct Cue) 3¼ Min.

Relig^{to}

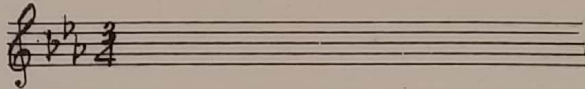
Musical notation for 'Repeat No. 15' in 2/4 time, consisting of a blank staff with a treble clef and a key signature of one flat.

22 (Action) SIX SALVATION GIRLS TURN SHOWING
BACKSRepeat No. 15 "Holy Ghost, With Light Divine"½ Min.

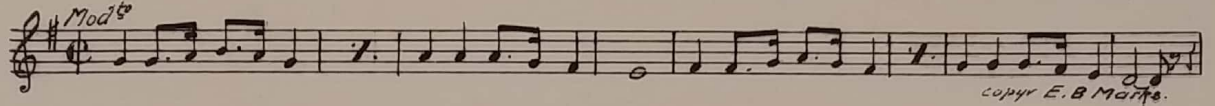


NOTE: Jazz and play to action.

23 (Action) JERRY AND CAPTAIN MARY SEENRepeat No. 18 "Melodie"½ Min.



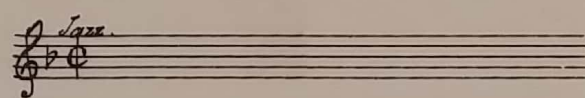
24 (Action) GIRLS DANCING IN CAFEAin't We Carryin' On (Frisch)¾ Min.



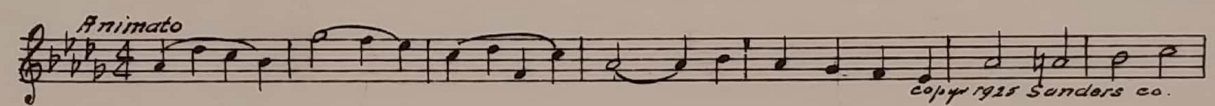
25 (Title) YOU CAN'T MOCK GODThe Omnipotence (Schubert)1¼ Min.



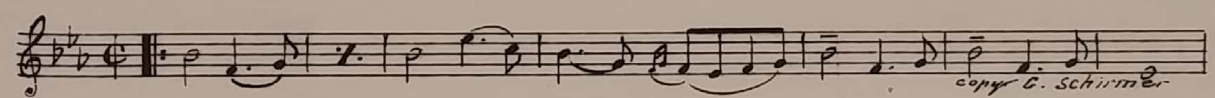
26 (Action) GIRL DANCING IN CAFERepeat No. 11 "Ukulele Lady"1 Min.



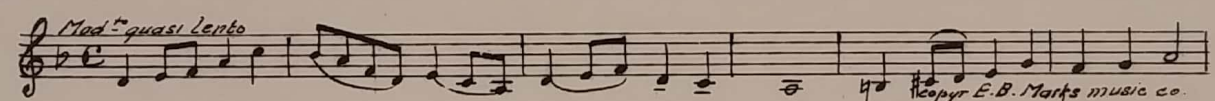
27 (Action) BABE IN DRESSING ROOMDesire (Siewert)1 Min.



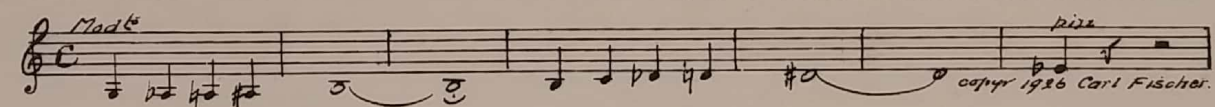
28 (Title) NIGHT AFTER NIGHTIn Love (Friml)3 Min.



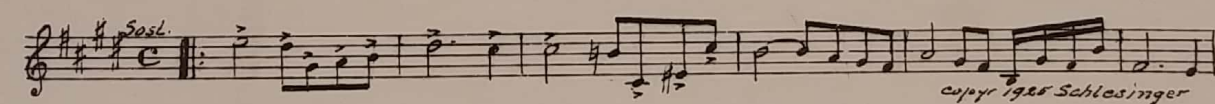
29 (Action) OLD WOMAN SEEN OUTSIDEAshes of the Past (Leroux)1 Min.



30 (Title) CHRISTMAS WEEKChristmas Bells (Rapee)1 Min.



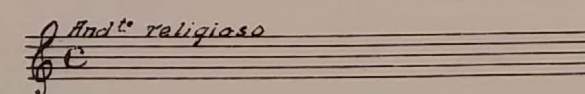
31 (Action) JERRY SEES BABEEmotional Conflict (Becce)¾ Min.



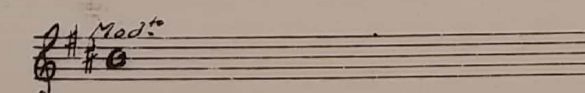
32 (Action) BERTHA AND WAITER IN OFFICE.....Whims (Savino)2 Min.



33 (Action) BABE LOOKS INTO MIRROR AFTER
LONNIE LEAVESRepeat No. 25 "The Omnipotence"½ Min.



33½ (Action) AFTER BABE LEAVES ROOMRepeat No. 8 "Miss Mischief"1½ Min.



34 (Action) BABE STARTS SINGING Repeat No. 15 "Holy Ghost With Light Divine" (Direct Cue)..... 1/4 Min.

Relig. Th.

35 (Action) MAN JOINS JERRY OUTSIDE CAFE..... Lure of Crimson (Marquardt) 1/2 Min.

copyr 1925 Music Buyers corp.

36 (Action) GIRL SEEN DANCING Repeat No. 15 "Holy Ghost, With Light Divine" 1 Min.

Relig. Th.
Jazz.

37 (Action) BABE ENTERS HER ROOM Disenchantment (Bizet) 1 1/4 Min.

And^{te}

copyr E.B. Marks music co.

38 (Action) BABE KNOCKS GLASS FROM JERRY'S HAND Anger (Casadesus) 1/2 Min.

All^s

copyr E.B. Marks music co.

39 (Action) INSERT--SALVATION ARMY RIBBON Tragic Andante (Savino) 1 1/4 Min.

And^{te}

copyr 1928 G. Schirmer

40 (Action) SALVATION ARMY GIRL APPEARS IN MIRROR Repeat No. 25 "The Omnipotence" 1/4 Min.

And^{te} religioso

41 (Action) BABE LEAVES ROOM Folly (Franceschi) 1 1/4 Min.

copyr 1926 J. Franceschi

42 (Action) JERRY SEEN IN STREET Tragic, con moto (Drigo's Cinema Classics) 1 Min.

Agitato con moto

copyr 1928 Carl Fischer

43 (Action) BABE AND MAN IN MOTOR Poursuite Dramatique (Drigo's Cinema Classics) 2 1/4 Min.

All^s concitato

copyr 1926 Carl Fischer

44 (Action) BABE APPROACHES DYING GIRL'S BED..... Pathetic Symphony No. 6 (Tschaiowsky) 3 Min.

Adagio lamentoso

copyr 1916 Hawkes & Son

45 (Action) JERRY'S HAND REACHING FOR GERTIE'S HAND Repeat No. 1 "Largo"

Largo

NOTE: Start "PP" to "FF" for finish.

THE END

Printed in U. S. A.

Complete orchestrations and stage show scripts for each separate number contained herein, can be purchased from GAMES MUSIC SERVICE CORPORATION, 10-17 WEST 42nd STREET, NEW YORK CITY.