

M. J. MINTZ (PATENT)
JULY 31, 1923.

Richard A. Rowland

presents

"THE BARKER"

with

MILTON SILLS—DOROTHY MACKAIL

and Betty Compson

From play by John Kenyon Nicholson

Stage Production by Charles L. Wagner

Adaptation by Benjamin Glazer

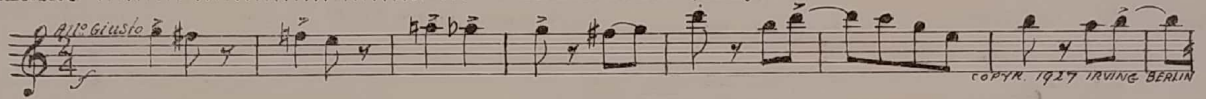
A GEORGE FITZMAURICE PRODUCTION

Compiled by James C. Bradford

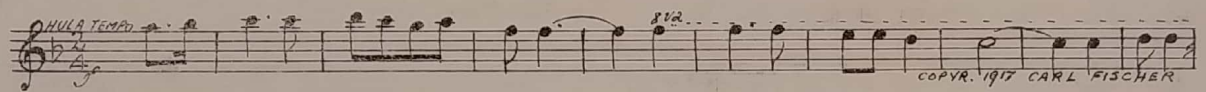
A FIRST NATIONAL PICTURE

*Use
the
Hawaiian
March
Saxes
Boat
Cue
from
Race*

1 AT SCREENING Carnival Frolics (Lakay) 3 Min

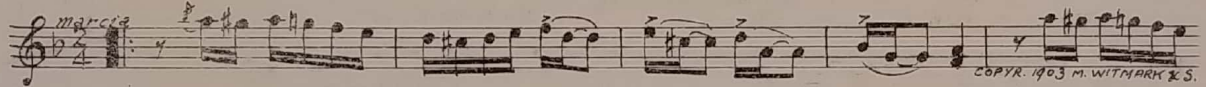


2 (Action) CARRIE STARTS TO DANCE Hawaiian March and One-Step (Berger) 1 1/2 Min



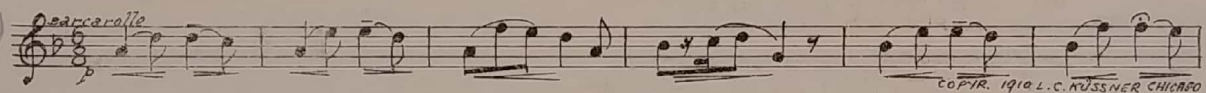
NOTE: Play on Hawaiian instruments.

3 (Title) ALL FOR A THIN DIME Sakes Alive (Howard) 1/2 Min

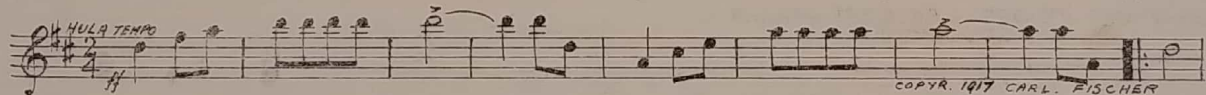


4 (Title) HELLO DAD BOY THEME: The Evening Hour (Kussner) 1 1/2 Min

Boy theme



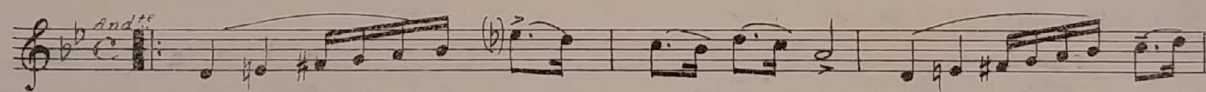
5 (Action) INTERIOR OF TENT—HAWAIIAN DANCE Hilo (Kalt) 1 3/4 Min



NOTE: Play on Hawaiian instruments.

6 (Action) CARRIE FINISHES DANCE CARRIE THEME: Chanson Algerian (Bradford) 1 1/2 Min

*Carrie
Tm*



COPYR. 1926 SAM FOX PUB CO

7 (Title) CHRIS, THIS IS LOU Love Song (Wright) 1 Min

And^{mo}
COPYR. 1936 G. SCHIRMAR

8 (Title) CARRIE, I'VE GOT A SURPRISE FOR YOU Changing Moods (Jacquet) 1 1/4 Min

Valse lento
COPYR. 1928 IRVING BERLIN

9 (Action) EXTERIOR FLASH Rural Flirts (Bradford) 3 3/4 Min

All^{mo}
COPYR. 1925 BELWIN INC.

10 (Action) CHRIS AND NIFTY SEATED ON BUNK Repeat Boy Theme No. 4 3/4 Min

Baccarolle
p

11 (Title) I'M SORRY CARRIE Repeat Carrie Theme No. 6 1 1/4 Min

and^{te}
c

12 (Title) I'VE GOT A QUART OF MULE Blue Law Blues (Lake) 4 Min

mod^{to}
COPYR. 1921 CARL FISCHER

13 (Title) WELL KID, HOW DO YOU LIKE That's My Weakness Now (Green) 1 1/2 Min

mod^{to}
COPYR. 1928 GREEN & STEPT

14 (Title) WE'D BETTER PUT HIM TO BED Implorations (Pasternack) 4 3/4 Min

mod^{to} ma sostenuto
COPYR. 1928 IRVING BERLIN

15 (Action) CARRIE OPENS SATCHEL—TAKES OUT REVOLVER Vehement Desire (Bradford) 2 Min

All^o Abbass *p* *f* *pp* *f* *pp*
COPYR. 1928 KALMUS FILMUSIC.

16 (Action) CHRIS AND NIFTY IN DARK ROOM Destiny's Call (Jacquet) 2 Min

Grave
COPYR. 1927 IRVING BERLIN

17 (Action) FLASH-BACK TO CHRIS AND NIFTY Repeat Boy Theme No. 4 1/2 Min

Baccarolle
p

18 (Action) FLASH-BACK TO PLOTTING GIRLS Hovering Shadows (Hahn) 1 Min

All^o Mod^{to}
COPYR. 1928 JOHN CHURCH CO

19 (Title) LIKE FATHER, LIKE SON La Petite Coryphee (Tracy) 3 1/2 Min

All^o Grazioso
COPYR. 1895 JOHN CHURCH CO

20 (Title) GEE, I BET YOU MUST HAVE BEEN ... LOVE THEME: I'll Never Forget (Kahn) ... 1 1/4 Min

LT

21 (Action) ENGINE SEEN ... Sarabande Perpetuelle (Bradford) ... 1/2 Min

22 (Title) HOLIDAY IN A MILL TOWN ... Strawberries (Kaufman) ... 1 1/2 Min

23 (Action) MAN TAKES HOLD OF LOU'S LEG ... Ferocity (Carrozini) ... 2 1/2 Min

Boy Theme

24 (Action) NIFTY BENDING OVER CHRIS ... Repeat Boy Theme No. 4 ... 1 1/4 Min

25 (Action) NIFTY LEAVES ROOM ... Repeat No. 7 "Love Song" ... 2 1/2 Min

26 (Title) LET'S GET MARRIED FIRST ... Repeat Love Theme No. 20 ... 2 Min

27 (Action) NIFTY APPEARS ... The Spectre (Engleman) ... 1 1/2 Min

28 (Title) CHRIS WANTS TO MARRY ME ... Melodie Poetique (Huerter) ... 1 1/2 Min

29 (Action) CHRIS AND NIFTY IN STATE ROOM ALONE ... Preludio (Cordova) ... 2 1/4 Min

30 (Action) INSERT—ELMER F. POST—JUSTICE OF THE PEACE ... Let a Smile be Your Umbrella (Fain) ... 1 1/4 Min

31 (Title) SEE IF YOU CAN FIND NIFTY ... Elegie (Ernst) ... 2 3/4 Min

32 (Title) I SAID I'D PAY YOU Baker's Boy and the Chimney Sweep (Herbert) ¾ Min

Valse

 Musical notation for 'I SAID I'D PAY YOU' in 3/4 time, marked 'Valse' and 'mf'. Copyright 1914 G. Schirmer.

33 (Action) NIFTY ENTERS TENT Andante from "Pathetique Symphony No. 6" (Tschaikowsky) 6¼ Min.

And. Ass.

 Musical notation for 'NIFTY ENTERS TENT' in 4/4 time, marked 'And. Ass.'. Copyright 1916 Hawes & Son.

34 (Title) AND IN CASE YOU'D LIKE TO KNOW Allegro Agitato (Hahn) 2¾ Min.

Allegro agitato

 Musical notation for 'AND IN CASE YOU'D LIKE TO KNOW' in 4/4 time, marked 'Allegro agitato'. Copyright 1928 John Church.

35 (Action) EXTERIOR OF TRAIN Repeat Boy Theme No. 4 1¾ Min.

Boy Th.

 Musical notation for 'EXTERIOR OF TRAIN' in 6/8 time, marked 'Barcarolle' and 'p'. Copyright 1914 G. Schirmer.

36 (Action) CARRIE ENTERS DESERTED STATE ROOM ... All Alone (Berlin) 1 Min.

Fake all alone
Valse lento

 Musical notation for 'CARRIE ENTERS DESERTED STATE ROOM' in 4/4 time, marked 'Valse lento' and 'mf'. Copyright 1924 Irving Berlin.

37 (Title) ANOTHER BARKER Hawaiiana (Kaiulaua) 1 Min.

MULR TEMPO

 Musical notation for 'ANOTHER BARKER' in 4/4 time, marked 'mf'. Copyright 1917 Carl Fischer.

38 (Action) CARRIE AT COUNTER NOTE: Play on Hawaiian instruments. Repeat Carrie Theme No. 6 1 Min.

Carrie Th.

 Musical notation for 'CARRIE AT COUNTER' in 4/4 time, marked 'Andte'.

39 (Action) NIFTY FALLS TO GROUND Elopement (Carrozzini) ¾ Min

Vivace

 Musical notation for 'NIFTY FALLS TO GROUND' in 2/4 time, marked 'Vivace'. Copyright 1926 Sonnemann.

40 (Title) HOW'S BUSINESS Razz Berries (Banta) 1¼ Min.

All: Giustoz

 Musical notation for 'HOW'S BUSINESS' in 4/4 time, marked 'All: Giustoz'. Copyright 1919 Robbins Music Co.

41 (Action) CARRIE STARTS TO DANCE On the Beach at Waikiki (Lake) 1½ Min

mod.to

 Musical notation for 'CARRIE STARTS TO DANCE' in 4/4 time, marked 'mod.to'. Copyright 1916 Carl Fischer.

42 (Title) I HAVE A JOB IN CHICAGO NOTE: Play on Hawaiian instruments. Repeat Boy Theme No. 4 ½ Min

43 (Action) NIFTY LEAVES PLATFORM Repeat Carrie Theme No. 6 1½ Min

44 (Title) YOU TOO GET IN THERE Repeat Boy Theme No. 4 1½ Min

THE END

Printed in U. S. A

Complete orchestrations and single piano parts of each separate number contained hereon, can be purchased from CAMEO MUSIC SERVICE CORPORATION, 315-317 WEST 47TH STREET, NEW YORK CITY.