



MARION DAVIES

in

QUALITY STREET

Luz

with
CONRAD NAGEL
 From the play by James M. Barrie
 Adaptation and Scenario by
 Hans Kraly and Albert Lewin
A MARION DAVIES PRODUCTION
 Directed by Sidney Franklin
 Compiled by Ernst Luz

A METRO-GOLDWYN-MAYER PICTURE

Length of film 8 reels (7870 feet) Maximum projection time 1 hour, 32 minutes

- 1 AT SCREENING Drink To Me Only With Thine Eyes (Marquardt) 1¼ Min.

Drink To Me

Slow, s.v.c.

Photo Play Music Co.

- 2 (Title) THE TIME—LATE AFTERNOON A State Procession (Kettelbey) 1¼ Min.

P

*Tempo di march militare.
Brisato*

Copyright 1924 Bosworth & Co.

- 3 (Action) DOORBELL RINGS Gossip (Marquardt) ½ Min.

}

All. Vivace

Photo Play Music Co.

- 4 (Action) SUSAN IN HOUSE SHOWS ON SCREEN Chatterbox (D'Ambrosio) (YELLOW) ¾ Min.

Tempo di Gualle

Copyright 1926 Boston Music Co.

- 5 (Action) MARION DAVIES SITS DOWN Drink To Me Only With Thine Eyes (Marquardt) ½ Min.

Drink To Me

Slow, s.v.c.

Photo Play Music Co.

- 6 (Action) SUSAN BEGINS TO WIND WOOL Storm Galop (Kozzak) ½ Min.

Galop

Copyright 1927 Photo Play Music Co.

- 7 (Action) THREE GIRLS TURN FROM WINDOW Love's Impulse (Jacquet) 1¼ Min.

All. animato

Copyright 1927 Irving Berlin Inc.

- 8 (Title) ONE HUNDRED Storm Galop (Kozzak) ¼ Min.

Galop

Copyright 1927 Photo Play Music Co.

- 9 (Title) GO BACK Shepherd's Pipe from "Romantic Suite" (Grieg) 1 Min.

All. Mod.º

Copyright 1927 Photo Play Music Co.

NOTE: Play 1st strain twice

10 (Title) DO MY EYES BEHOLD PHOEBE Repeat No. 1 "Drink To Me Only With Thine Eyes".....1½ Min.

Drink Th

Slow.
Musical notation for item 10

11 (Action) INVITATION TO DANCE SHOWN ON SCREEN Viennese (Komzak)1¾ Min.

Tempo di Polka
Musical notation for item 11

NOTE: Play 4 bars and segue.
SEGUE: Shepherd's Pipe (Gregh)

All^o Mod^o
Musical notation for segue

12 (Action) SUSAN BEGINS TO SEW DRESS Gossip (Marquardt)1 Min.

Vivace
Musical notation for item 12

NOTE: Begin at 2nd strain and repeat (C) in last bar until cue for dance.

13 (Title) NO, NOT YET, BUT WE EXPECT IT HOURLY The Festivities from "Romantic Suite" (Stanley) (BROWN)..1½ Min.

Mod^o Vivace
Musical notation for item 13

14 (Action) PHOEBE AND DOCTOR WALK DOWN STAIRS FROM DANCE PAVILLION Repeat No. 8 "Storm Galop"½ Min.

Galop
Musical notation for item 14

NOTE: Omit introduction; play 1st three strains with repeat.

15 (Action) MARION DAVIES SEATED IN GARDEN—DOCTOR ON WITH TWO GLASSES OF LEMONADE Storm Galop (Komzak) (Trio)2 Min.

Galop
Musical notation for item 15

NOTE: Play 4 bars ritard and segue.
SEGUE: Drink To Me Only With Thine Eyes (Marquardt)

Slow
Musical notation for segue

16 (Action) CLOUD SCENE Perpetuum Mobile (Rapee)¾ Min.

All^o Molto
Musical notation for item 16

17 (Action) PHOEBE AND DOCTOR STOP WALKING Repeat No. 3 "Gossip"1 Min.

All^o Vivace
Musical notation for item 17

Keep out

18 (Action) MARION DAVIES RUNS INTO HOUSE Drink To Me Only With Thine Eyes (Marquardt)½ Min.

Appass tempo rubato
Musical notation for item 18

Drink Th

19 (Action) MARION DAVIES RUNS OUT OF ROOM Gossip (Borch)½ Min.

All^o Vivace
Musical notation for item 19

20 (Action) INTERIOR SCENE AFTER GOSSIPERS CROSS STREET Drink To Me Only With Thine Eyes (Marquardt).....¼ Min.

Slow
Musical notation for item 20

Drink Th

21 (Action) **FADE-OUT OF SISTERS TO MEN ON STREET** Symphonic Color Classic No. 8 (Schoenfeld) (RED) 1/2 Min.

Draw Th

And^{te}

And^{te}

22 (Title) **AND NAPOLEON** Robespierre Overture (Litolff) 1/2 Min.

All^o con bris

23 (Action) **FADE-OUT OF NAPOLEON CAMP SCENES**... Repeat No. 21 (RED) 1/2 Min.

Draw Th

And^{te}

24 (Action) **FADE-OUT OF CLOSE-UP OF MEN IN RAIN MOVING TO CAMERA** Chatterbox (D'Ambrosio) (YELLOW) 1 1/2 Min.

Gavotta

gva

25 (Title) **I'VE GOT A HAPPY SURPRISE FOR YOU** Symphonic Color Classic No. 8 (Schoenfeld) (WHITE) 1 Min.

LT

Mod^{to}

26 (Action) **FADE-OUT AS GIRLS EMBRACE** Repeat No. 3 "Gossip" 1 1/2 Min.

All^o Vivace

27 (Action) **FADE-OUT OF MOUTH MOVING** A State Procession (Kettelbey) 1 1/4 Min.

Mazurka

gva

28 (Action) **DOCTOR SEES SISTERS AS MAID OPENS DOOR** Repeat No. 25 (WHITE) 1 Min.

LT

Mod^{to}

29 (Title) **I MEAN, I THINK** Repeat No. 10 "Drink To Me Only" 1 Min.

Drink Th

Slow

30 (Title) **I'M GLAD** Repeat No. 21 (RED) 4 bars only very slow 1/2 Min.

Draw Th

And^{te}

31 (Action) PHOEBE AND DOCTOR STAND UP Drink To Me Only With Thine Eyes (Marquardt)..... ¾ Min.

Slow
8va
Musical notation for item 31

Mirror
Musical notation for item 31 continuation

32 (Title) I'LL TELL SUSAN Broken Vows (Kempinski) 1½ Min.

Andte
Musical notation for item 32

NOTE: Play introduction and 1st strain twice.

33 (Action) DOCTOR SHAKES HANDS WITH SUSAN..... Repeat No. 20 "Drink To Me Only" ¾ Min.

Drink Th

Slow
Musical notation for item 33

34 (Action) DOCTOR LEAVES ROOM—CLOSE-UP OF TWO SISTERS Drink To Me Only (Marquardt) (Plaintive Minor)..... 1¼ Min.

appears

Appass minore
Musical notation for item 34

35 (Action) PHOEBE PUTS DRESS IN CHEST Repeat No. 3 "Gossip" ¾ Min.

All^o Vivace
Musical notation for item 35

36 (Action) GOSSIPERS ON WITH SUSAN AT ORGAN— SUSAN SHOWS DESPAIR IN FACE..... British Grenadiers from "12 English Songs" (De Witt)..... 1¼ Min.

March
Musical notation for item 36

NOTE: Play with Fife, Piccolo and Drums.

37 (Action) MARION DAVIES LYING ON FLOOR AFTER TWO GOSSIPERS WAVE HANDS SLOWLY THROUGH WINDOW Repeat No. 34 "Drink To Me Only" (4 bars) ½ Min.

Drink Th

Appass minore
Musical notation for item 37

38 (Title) THEN FOR MANY YEARS Trumpet and Open Drum Roll 5 Sec.

39 (Action) FADE-OUT OF SUBTITLE Gavotte In G (Gluck) ½ Min.

All^o grazioso
Musical notation for item 39

NOTE: Play 1st strain 1½ times through—Piano alone.

40 (Action) GIRLS PUT FEET ON BOY'S KNEES The Joy Riders (Patou) 1 Min.

All^o
Musical notation for item 40

41 (Title) UNHAPPY BOY, WHY DID YOU FIGHT An English Tune (Geehl) 2 Min.

Fairly slow and Slowly
Musical notation for item 41

42 (Action) PHOEBE WALKS FROM SCHOOL INTO ROOM AT PIANO Repeat No. 20 "Drink To Me Only" ½ Min.

Drink Th

Slow
Musical notation for item 42

43 (Action) CLOSE-UP OF PHOEBE'S FACE IN BRIGHT MIRROR Drink To Me Only (Marquardt) ½ Min.

Slow
Musical notation for item 43

Appass. Tempo rubato.
Musical notation for item 43 continuation

44 (Action) TWO SOLDIERS IN TALLY HO SHAKE HANDS Posthorn Galop (Koenig) 1 Min.

Musical notation for item 44, featuring a Posthorn Galop in 2/4 time with a key signature of one sharp (F#). The notation includes a treble clef and a 2/4 time signature. Handwritten annotations include 'Galop', 'Posthorn', and 'Posthorn' above the staff, and 'copy 1927 Carl Fischer' below the staff.

45 (Action) SOLDIERS GET OUT OF TALLY HO Repeat No. 2 "State Procession" 1 Min.

Musical notation for item 45, featuring a State Procession in 4/4 time with a key signature of one sharp (F#). The notation includes a treble clef and a 4/4 time signature. Handwritten annotation: 'Tempo di march Militaire' above the staff.

46 (Action) DOORBELL RINGS Repeat No. 3 "Gossip" 3/4 Min.

Musical notation for item 46, featuring a Gossip in 2/4 time with a key signature of one flat (Bb). The notation includes a treble clef and a 2/4 time signature. Handwritten annotation: 'Allegro Vivace' above the staff.

47 (Action) CAPTAIN ABOUT TO KNOCK ON DOOR— CHILDREN EXIT Symphonic Color Classic No. 8 (Schoenfeld) (WHITE) 1/4 Min.

LT

Musical notation for item 47, featuring a Symphonic Color Classic No. 8 in 4/4 time with a key signature of one flat (Bb). The notation includes a treble clef and a 4/4 time signature. Handwritten annotations include 'Mod.' above the staff and 'copy 1927 Music Buyers corp.' below the staff.

48 (Action) HOUSEKEEPER OPENS SECOND DOOR— CAPTAIN SEES SUSAN Chatterbox (D'Ambrosio) (YELLOW) 1 Min.

Musical notation for item 48, featuring a Chatterbox in 2/4 time with a key signature of one flat (Bb). The notation includes a treble clef and a 2/4 time signature. Handwritten annotations include 'Tempo di Gavotte' above the staff and 'copy 1926 Boston Music Co.' below the staff.

49 (Title) WHERE'S MISS PHOEBE Repeat No. 47 (WHITE) 1/4 Min.

LT

Musical notation for item 49, featuring a Where's Miss Phoebe in 2/4 time with a key signature of one flat (Bb). The notation includes a treble clef and a 2/4 time signature. Handwritten annotation: 'Mod.' above the staff.

50 (Action) PHOEBE SEES CAPTAIN BEHIND DOOR..... Repeat No. 43 "Drink To Me Only" 1 Min.

Drink To Me Only

Musical notation for item 50, featuring a Drink To Me Only in 3/8 time with a key signature of one sharp (F#). The notation includes a treble clef and a 3/8 time signature. Handwritten annotation: 'Slow' above the staff.

51 (Action) PHOEBE MOTIONS CAPTAIN TO SIT DOWN. Farewell (Howgill) 2 1/2 Min.

Musical notation for item 51, featuring a Farewell in 3/4 time with a key signature of one sharp (F#). The notation includes a treble clef and a 3/4 time signature. Handwritten annotations include 'Andte' above the staff and 'copy 1926 Howgill & Son' below the staff.

52 (Action) PHOEBE WALKS FROM CAPTAIN BROWN... Repeat No. 20 "Drink To Me Only" 1 Min.

Drink To Me Only

Musical notation for item 52, featuring a Drink To Me Only in 3/8 time with a key signature of one sharp (F#). The notation includes a treble clef and a 3/8 time signature. Handwritten annotation: 'Slow' above the staff.

53 (Action) PHOEBE LAYS HEAD ON DESK AFTER SHE CRIES Sweet Thoughts of Love (Alu) 1/4 Min.

Musical notation for item 53, featuring a Sweet Thoughts of Love in 3/4 time with a key signature of one flat (Bb). The notation includes a treble clef and a 3/4 time signature. Handwritten annotation: 'Andte' above the staff and 'copy 1927 Photo Play Music Co.' below the staff.

54 (Title) PHOEBE, PHOEBE, YOU MUST NOT GIVE WAY Symphonic Incidentals No. 9 (Marquardt) 1 Min.

Musical notation for item 54, featuring a Symphonic Incidentals No. 9 in 2/4 time with a key signature of one flat (Bb). The notation includes a treble clef and a 2/4 time signature. Handwritten annotation: 'Vivo' above the staff and 'copy 1927 Music Buyers corp.' below the staff.

55 (Action) PHOEBE UNDRESSING AFTER SHE THROWS UP RIGHT ARM SECOND TIME Viennese (Komzak) 1 1/2 Min.

Musical notation for item 55, featuring a Viennese in 2/4 time with a key signature of one sharp (F#). The notation includes a treble clef and a 2/4 time signature. Handwritten annotations include 'Polka 8va' above the staff and 'copy 1927 Photo Play Music Co.' below the staff.

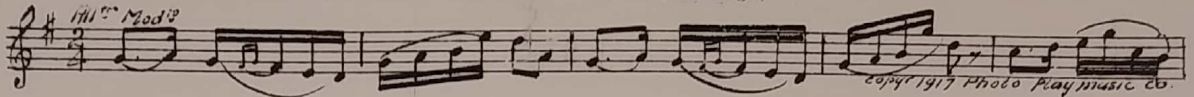
56 (Action) PHOEBE STOPS DANCING WHEN SEEING CAPTAIN BROWN Repeat No. 43 "Drink To Me Only" 1 1/2 Min.

Drink To Me Only

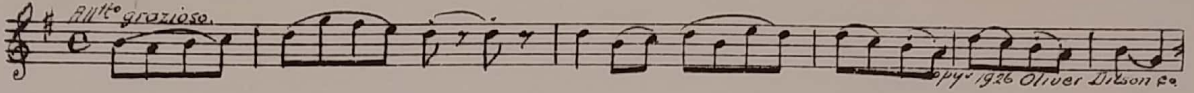
Musical notation for item 56, featuring a Drink To Me Only in 3/8 time with a key signature of one sharp (F#). The notation includes a treble clef and a 3/8 time signature. Handwritten annotation: 'Slow' above the staff.

NOTE: Play 8 bars, orchestra—slow and segue.

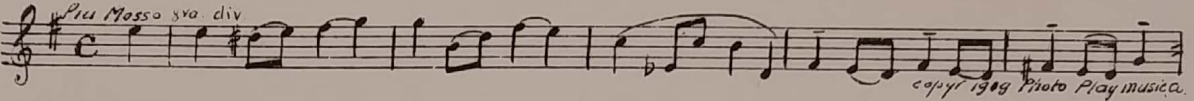
SEGUE: Shepherd's Pipe (Gregh)



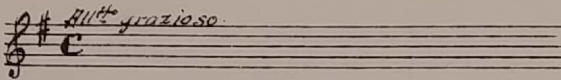
57 (Action) MARION DAVIES SITS DOWN AT PIANO..... Gavotte In G (Gluck) 3/4 Min.



58 (Action) CAPTAIN WALKS OUT OF ROOM Constance (Golden) 1/2 Min.



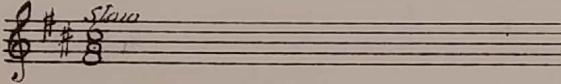
59 (Action) MARION DAVIES BEGINS TO PLAY PIANO.. Repeat No. 57 "Gavotte In G" 1/4 Min.



60 (Action) MARION DAVIES' FINGERS STOP PLAYING PIANO Play "Lilac Time" from (May Days Are Gray Days) (Harms) 1 3/4 Min.

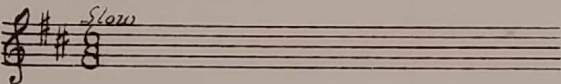
61 (Action) CAPTAIN WALKS FROM PHOEBE Repeat No. 5 "Drink To Me Only" 1/4 Min.

Menu

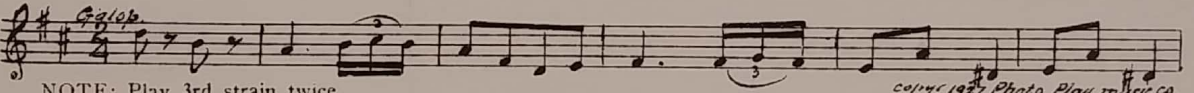


62 (Action) MARION DAVIES RUNS TO DOOR Repeat No. 20 "Drink To Me Only" 1/2 Min.

Drink To Me Only

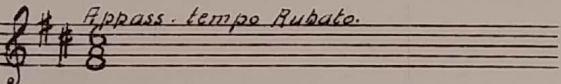


63 (Action) MARION DAVIES LIFTS LEG AT DOOR..... Storm Galop (Komzak) 1/2 Min.

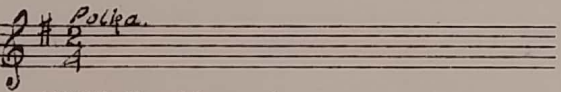


64 (Action) CAPTAIN CATCHES MARION DAVIES AT TREE Repeat No. 18 "Drink To Me Only" 3/4 Min.

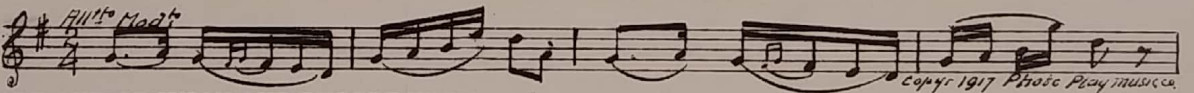
Drink To Me Only



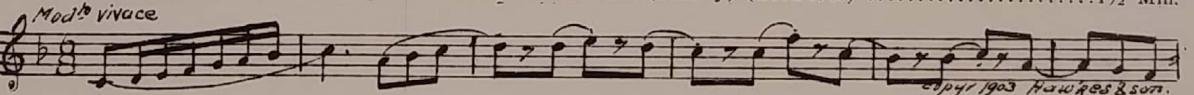
65 (Action) SUSAN SHOWS ON SCREEN-INTERRUPTS LOVERS Repeat No. 55 "Viennese" 1 1/2 Min.



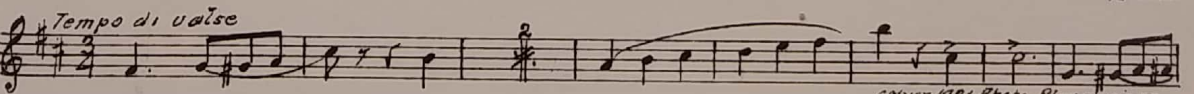
NOTE: Play 4 bars and segue.
SEGUE: Shepherd's Pipe (Gregh)



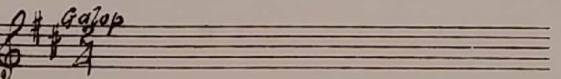
66 (Action) FADE-OUT OF SUSAN AND PHOEBE WITH VEIL AT DOOR The Festivities (Stanley) (BROWN) 1 1/2 Min.



67 (Action) GOSSIPERS SHOW Sunshine and Flowers (Schoenfeld) 1/2 Min.



68 (Action) MARION DAVIES AND CAPTAIN COME DOWN STAIRS Repeat No. 14 "Storm Galop" 1 1/4 Min.



69 (Action) PHOEBE SITS DOWN ON BENCH IN GARDEN
—CAPTAIN ON WITH TWO GLASSES OF
LEMONADESunshine and Flowers (Schoenfeld)1½ Min.

Musical notation for item 69. Includes tempo markings *Kalisc* and *Moderato*. Copyright 1931 Photo Play Music Co.

NOTE: Play 4 bars ritard and segue.
SEGUE:Sunshine and Flowers (Schoenfeld)

Musical notation for the segue of item 69. Includes tempo marking *meno mosso*. Copyright 1931 Photo Play Music Co.

70 (Title) 'TIS MOST AGREEABLERepeat No. 20 "Drink To Me Only"¾ Min.

Drink To Me

Musical notation for item 70. Includes tempo marking *Slower*.

71 (Action) CAPTAIN KISSES PHOEBESymphonic Incidentals No. 9 (Marquardt)½ Min.

Musical notation for item 71. Includes tempo markings *Vivo* and *sva*. Copyright 1927 Music Buyers Corp.

72 (Action) PHOEBE KNEELS AT SUSAN'S CHAIR.....Repeat No. 18 "Drink To Me Only"¼ Min.

Drink To Me

Musical notation for item 72. Includes tempo marking *Appass. Tempo rubato*.

73 (Action) FADE-OUT OF PHOEBE AND SUSAN.....Recompense d'Amour (Kempinski)2¼ Min.

Musical notation for item 73. Includes tempo marking *Andte religioso*. Copyright 1924 Photo Play Music Co.

74 (Action) FADE-OUT OF MARION DAVIES AND
SUSAN IN CLOSE-UPRepeat No. 48 (YELLOW)1½ Min.

Musical notation for item 74. Includes tempo marking *Tempo di Gavotte*.

75 (Action) PHOEBE WALKS THROUGH DOOR FROM
ROOM TO CAPTAINRepeat No. 12 "Gossip"1 Min.

Musical notation for item 75. Includes tempo marking *Vivace*.

76 (Action) SUSAN COMES THROUGH DOOR TO
CAPTAINRepeat No. 21 (RED)¾ Min.

Drink To Me

Musical notation for item 76. Includes tempo marking *Andte*.

77 (Title) PLEASE TO WAITLove's Impulse (Jacquet)1½ Min.

Drink To Me

Musical notation for item 77. Includes tempo markings *Allte animato* and *Ritardo*. Copyright 1927 Irving Berlin Inc.

78 (Action) FOOTSTEPS GOING UPSTAIRSRepeat No. 12 "Gossip"¼ Min.

Musical notation for item 78. Includes tempo marking *Vivace*.

79 (Action) CAPTAIN BROWN SPEAKS TO MAID.....Repeat No. 21 (RED)½ Min.

Drink To Me

Musical notation for item 79. Includes tempo marking *Andte*.

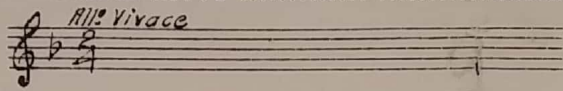
80 (Title) 'TIS ALL YOUR OWN FAULTRepeat No. 47 (WHITE)1 Min.

LT

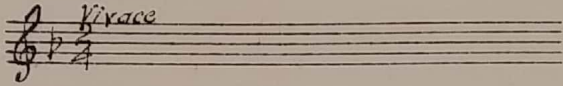
Musical notation for item 80. Includes tempo marking *Moderato*.

NOTE: Play once—repeat last 4 bars.

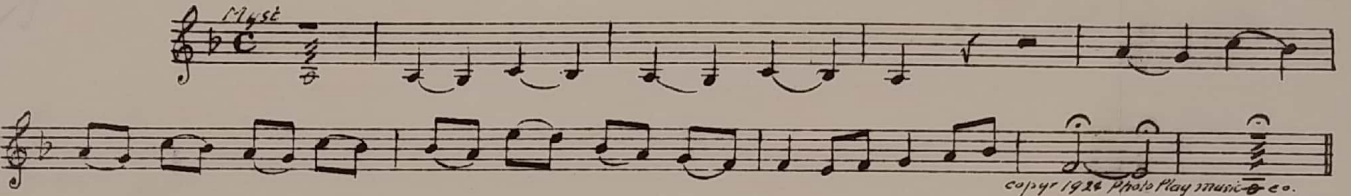
81 (Title) BUT NOW THAT SHE STARTED THIS HORRID LIVVY Repeat No. 3 "Gossip" 1/2 Min.



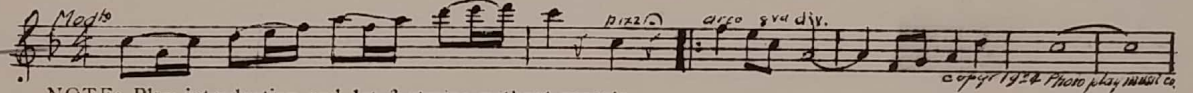
82 (Action) FEET COMING DOWN STAIRS Repeat No. 12 "Gossip" 1 Min.



83 (Action) SUSAN OPENS DOOR FOR SICK PHOEBE..... Dance of the Goblins (Schertzing) (Introd.) 1 Min.



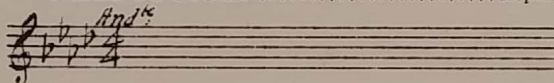
84 (Action) CAPTAIN PLACES CHAIR FOR SICK PHOEBE The Trysting Place (Schertzing) 2 Min.



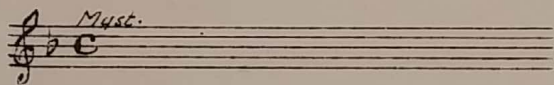
NOTE: Play introduction and 1st 3 strains without repeats.

85 (Action) DOCTOR STANDS UP FACING CAMERA— TALKS TO SUSAN Repeat No. 21 (RED) 1/2 Min.

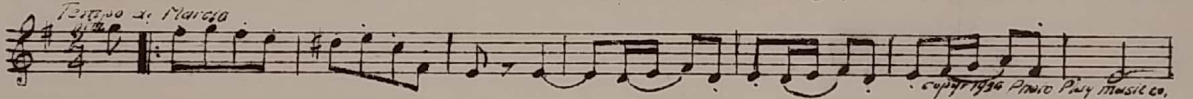
Draw Th



86 (Action) SUSAN WALKS TO DOOR Repeat No. 83 "Dance of the Goblins" 1 Min.

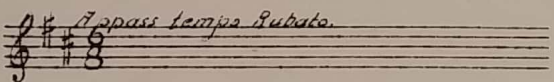


87 (Action) CAPTAIN RE-ENTERS ROOM—SEES PHOEBE GONE FROM CHAIR Dance of the Goblins (Schertzing) 1 1/4 Min.

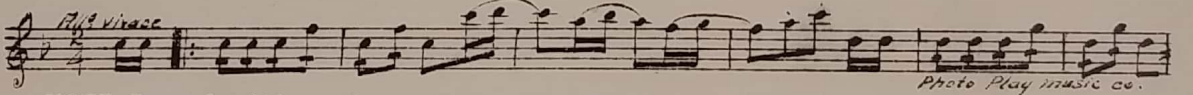


88 (Action) DOCTOR PAUSES IN DOOR WHEN CARRYING MODEL OUT OF ROOM..... Repeat No. 18 "Drink To Me Only" 1/2 Min.

Drink Th



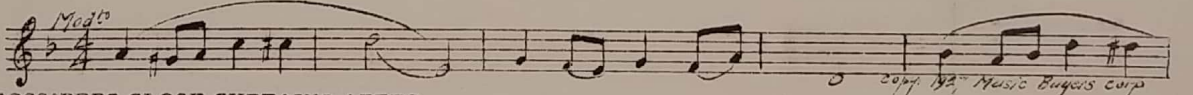
89 (Action) SISTERS EMBRACE—CARRIAGE SHOWS..... Gossip (Marquardt) 1 Min.



NOTE: Repeat first 16 bars and segue.

SEGUE: Symphonic Color Classic No. 8 (Schoenfeld) (WHITE)

LT



90 (Action) GOSSIPERS CLOSE CURTAINS AFTER CAPTAIN BOWS TO THEM Repeat No. 1 "Drink To Me Only" 1 Min.

Drink Th

THE END

Proper rest period is Nos. 39 to 51 inclusive.

NOTE: The repetition of numbers in this cue sheet is simplified by the use of the "LUZ" SYMPHONIC COLOR GUIDE, sold by Music Buyers Corporation, 1520 Broadway, New York City. The color suggested for repetition of numbers designates the Mood or Emotion, and is used as a code for such repetitions.

Country of Origin, U. S. A.

Complete orchestrations and single piano parts of each separate number contained hereon, can be purchased from CAMEO MUSIC SERVICE CORPORATION, 315-317 WEST 47TH STREET, NEW YORK CITY.