

M. J. MINTZ (PATENT)
JULY 31, 1923

Columbia Pictures

presents

"STAGE KISSES"

with

KENNETH HARLAN, HELENE CHADWICK,

John Patrick, Phillips Smalley

Ethel Wales and Frances Raymond

Screen adaptation by Dorothy Howell

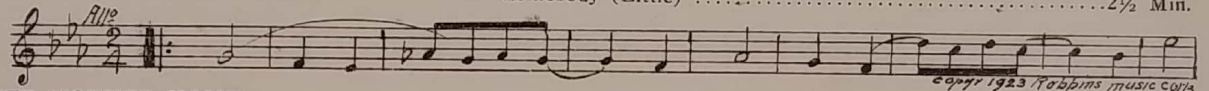
Directed by Albert Kelly

Compiled by James C. Bradford

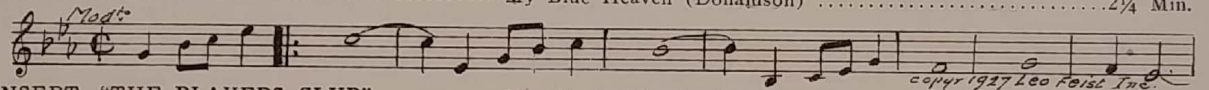
Copyrighted and distributed by

COLUMBIA PICTURES CORPORATION

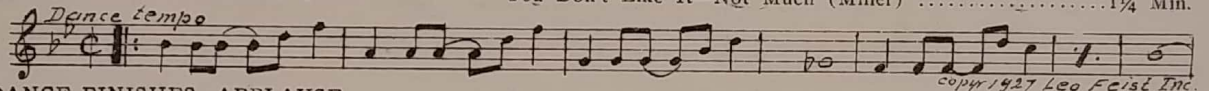
- 1 AT SCREENING Somebody (Little) 2½ Min.



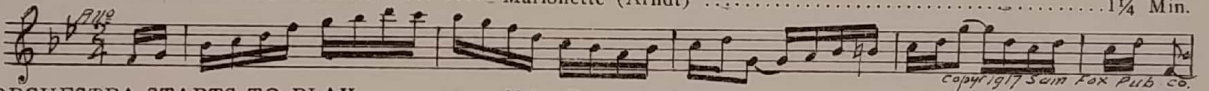
- 2 (Title) SEE MOTHER HOME My Blue Heaven (Donaldson) 2¼ Min.



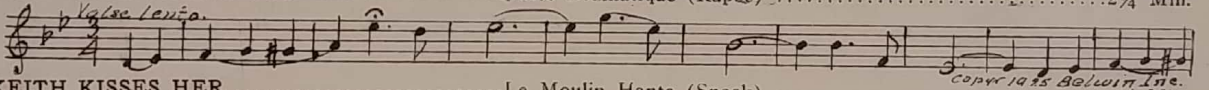
- 3 (Action) INSERT—"THE PLAYERS CLUB" You Don't Like It—Not Much (Miller) 1¼ Min.



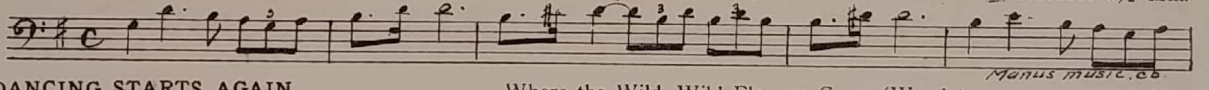
- 4 (Action) DANCE FINISHES—APPLAUSE Marionette (Arndt) 1¼ Min.



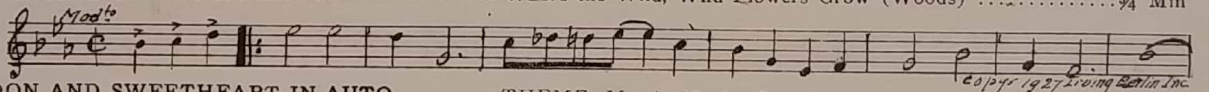
- 5 (Action) ORCHESTRA STARTS TO PLAY Valse Dramatique (Rapee) 2¼ Min.



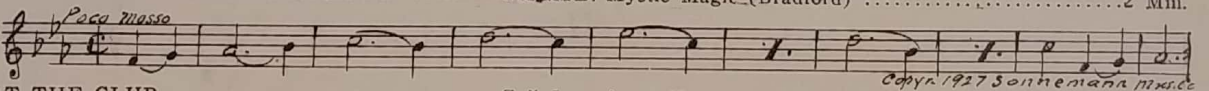
- 6 (Action) KEITH KISSES HER Le Moulin Hante (Snoek) ½ Min.



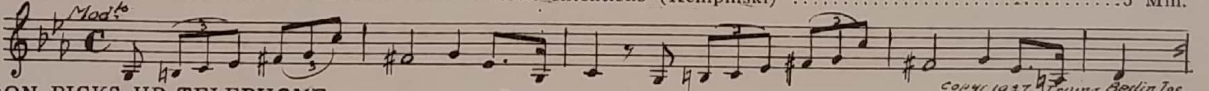
- 7 (Action) DANCING STARTS AGAIN Where the Wild, Wild Flowers Grow (Woods) ¾ Min.



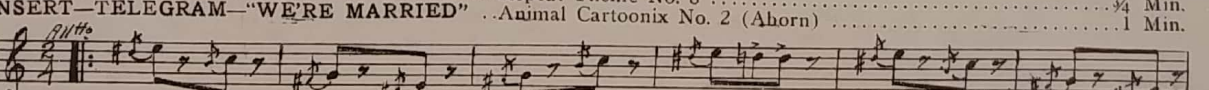
- 8 (Action) DON AND SWEETHEART IN AUTO THEME: Mystic Magic (Bradford) 2 Min.



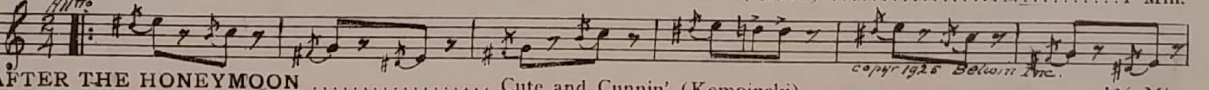
- 9 (Title) AT THE CLUB Evil Intentions (Kempinski) 3 Min.



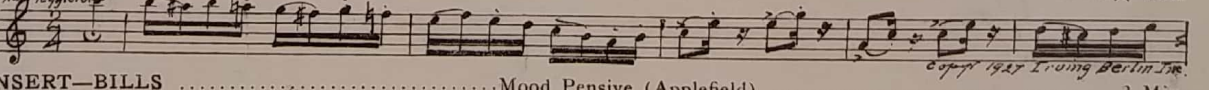
- 10 (Action) DON PICKS UP TELEPHONE Repeat Theme No. 8 ¾ Min.



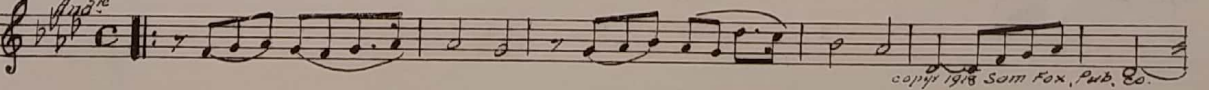
- 11 (Action) INSERT—TELEGRAM—"WE'RE MARRIED" Animal Cartoonix No. 2 (Aborn) 1 Min.



- 12 (Title) AFTER THE HONEYMOON Cute and Cunnin' (Kempinski) 1¼ Min.



- 13 (Action) INSERT—BILLS Mood Pensive (Applefield) 2 Min.



TH

TH

- 14 (Action) HE LEAVES ROOMSerenade (Chaminade)1½ Min.
Mod^{to}
 copyright 1911 G. Schirmer.
- 15 (Action) DON AND UNCLE IN OFFICELove's Impulse (Jacquet)2 Min.
Agitato
 copyright 1927 Irving Berlin Inc.
- 16 (Action) UNCLE SEES AUTO FROM WINDOWArabian Night (Mildenberg)½ Min.
And^{te} sost.
 copyright 1909 G. Schirmer.
- 17 (Action) FAY AND DON HAVING TEAAir de Ballet (Massenet)2½ Min.
All^{vo}
 copyright 1907 Carl Fischer.
- 18 (Action) CLUBReverie d'Amour (D'Aquin)1 Min.
And^{te}
 copyright 1925 Sonneborn Music Co.
- 19 (Action) FLASH-BACK TO FAY IN APARTMENTLittle Serenade (Grunfeld)1¼ Min.
And^{te}
 copyright 1909 Carl Fischer.
- 20 (Title) I'M SO HAPPYDisturbance (Zamecnik)1 Min.
Allegato
 copyright 1925 Sam Fox Pub. Co.
- 21 (Action) FAY CLOSES DOORPleading Love Theme (Bradford)2¼ Min.
And^{te}
 copyright 1924 Belwin Inc.
- 22 (Action) KEITH ENTERS ROOM BY WINDOWAppassionato No. 2 (Axt)2½ Min.
All^o Pass.
 copyright 1924 Robbins Music Corp.
- 24 (Action) FAY IN LAWYER'S OFFICEChanson Melancholique (Collinge)1½ Min.
And^{te}
 copyright 1920 Belwin Inc.
- 24 (Action) FAMILY PLAYING CARDSSylvan Reveries (Geary)1¼ Min.
Valse
 copyright 1927 Emil Hecher.
- 25 (Action) FAY AND CHAUFFEUR TALKINGConspiration (Fosse)1¾ Min.
Mod^{to}
 copyright J. YVES.
- 26 (Title) THE CLARKE RESIDENCEEnigma (Borch)3 Min.
Mod^{to}
 copyright 1922 Halcyon, B. Son.
- 27 (Action) CAR DRIVES UPDramatic Allegro (Savino)1½ Min.
All^o
 copyright 1927 G. Schirmer Inc.
- 28 (Title) YOU WOULDN'T LISTEN TO MY STORYAdventure d'Amour (Bradford)3 Min.
All^o
 copyright 1927 Robbins Music Corp.
- 29 (Title) MR. CLARKE, YOUR WIFESous Le Joug Du Destin (Reillac)3½ Min.
Lento Appass.
 Manus Music Co.
- 30 (Title) IT MEANS NO MORE THANEmotional Agitato (Savino)3 Min.

 copyright 1925 Robbins Music Corp.
- 31 (Action) DON THROWS KEITH OUT OF HOUSERepeat Theme No. 81 Min.

THE END

Printed in U. S. A.

Complete orchestrations and single piano parts of each separate number contained hereon, can be purchased from CAMEO MUSIC SERVICE CORPORATION, 315-317 WEST 47TH STREET, NEW YORK CITY.