




M. J. MINTZ (PATENT)
JULY 31, 1923.



BEATRICE FAIRFAX'S THE LOVELORN

with
SALLY O'NEIL, MOLLY O'DAY and LARRY KENT

Story by Beatrice Fairfax
Adaptation by Bradley King

Owned and copyrighted by
International Feature Service, Inc.

Directed by John P. McCarthy

A COSMOPOLITAN PRODUCTION

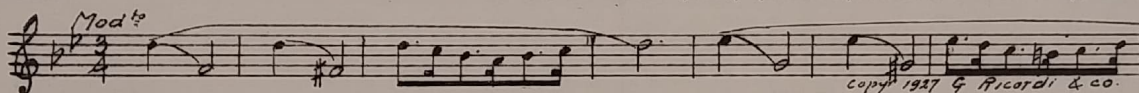
Compiled by Ernst Luz

A METRO-GOLDWYN-MAYER PICTURE

Length of film 7 reels (6055 feet). Maximum projection time 1 hour, 12 minutes

- 1 AT SCREENING Call Me Sweetheart (Robe) (WHITE) ½ Min.

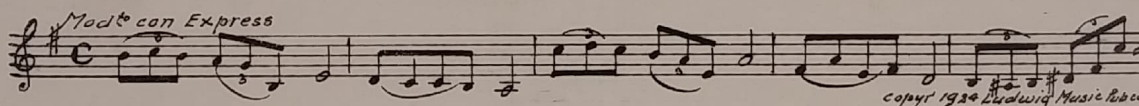
LT



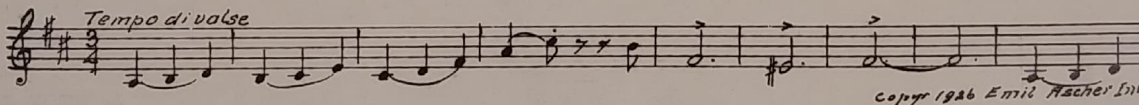
- 2 (Action) INTERRUPT WITH TRAIN EFFECT AT
END OF LONG MOVING SUBTITLE Train Effect by Drummer ¼ Min.
- 3 (Action) ONE SCENE Al Fresco (Herbert) ¼ Min.



- 4 (Action) LETTER ON SCREEN Caroma (Pabst) 2¼ Min.

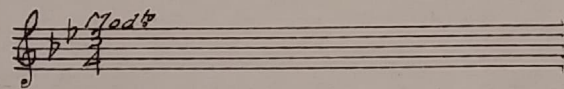


- 5 (Action) STREET SCENE La Fiancee (Hartz) 1 Min.



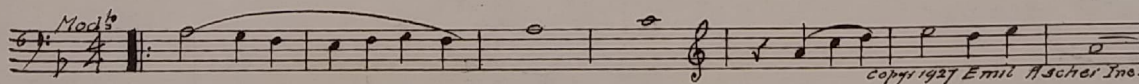
- 6 (Title) BOUGHT AND PAID FOR, MISS Repeat No. 1 (WHITE) 1 Min.

LT



- 7 (Action) CLOSE-UP OF LOVER AFTER GIRL ON
TROLLEY Love Thoughts (Friml) (DK. GREEN) 1¼ Min.

And More



- 8 (Action) STREET SCENE AFTER GIRL BUYS
MAGAZINE Jolly Jingles (Powell) 1 Min.



9 (Action) AUTO STOPS AT GIRL'S HOMEIncid. Symphony No. 38 (Jansen) (RED)¾ Min.

Handwritten: Harry Th

Musical notation for item 9. Treble clef, 2/4 time, key signature of one flat. Tempo marking: *All^o Mod^o*. Copyright: *copyr 1927 Photo Play music co.*

10 (Action) SISTERS ENTER HOUSEIntermezzo d'Arlequine (Bohm)2¼ Min.

Musical notation for item 10. Treble clef, 2/4 time, key signature of one flat. Tempo marking: *Mod^o grazioso*. Copyright: *copyr 1928 Photo Play music co.*

11 (Title) OH PLEASE, MRS. O'LEARYValse Annette (Baxter)2 Min.

Musical notation for item 11. Treble clef, 3/4 time, key signature of one flat. Tempo marking: *Mod^o grazioso*. Copyright: *copyr 1918 Sam Fox Pub. Co.*

12 (Title) I'M WISEMerry Playmates (Howgill)2 Min.
NOTE: Play 16 bars introduction and waltz.

Musical notation for item 12. Treble clef, 2/4 time, key signature of one flat. Tempo marking: *All^o*. Copyright: *copyr 1918 Hawkes & Son.*

13 (Action) LOVER GETS OUT OF AUTOFair Debutante (Reynard)3 Min.

Musical notation for item 13. Treble clef, 2/4 time, key signature of one flat. Tempo marking: *Mod^o*. Copyright: *copyr 1923 Sam Fox Pub. Co.*

14 (Action) TWO SISTERS SHOW IN BEDROOMSerenade (Leoncavallo)3 Min.

Musical notation for item 14. Treble clef, 3/4 time, key signature of one flat. Tempo marking: *And^{te} cantabile*. Copyright: *copyr 1928 Emil Ascher, Inc.*

15 (Action) FADE-OUT OF OLDER SISTER IN ROOM
AFTER AUTO LEAVESRepeat No. 7 (DK. GREEN)2 Min.

Handwritten: And New

Musical notation for item 15. Bass clef, 2/4 time, key signature of one flat. Tempo marking: *Mod^o*.

16 (Action) FADE-OUT OF BEATRICE FAIRFAX AFTER
SECOND LETTER IS FLASHEDChant d'Amour (Frommel)2 Min.

Musical notation for item 16. Treble clef, 3/4 time, key signature of one flat. Tempo marking: *And^{te} Appass*. Copyright: *copyr 1921 Belwin Inc.*

17 (Title) SOME PEOPLE DON'T KNOW A GOOD
THINGIncid. Symphony No. 38 (Jansen) (RED)¾ Min.

Handwritten: Harry Th

Musical notation for item 17. Treble clef, 2/4 time, key signature of one flat. Tempo marking: *All^o Mod^o*. Copyright: *copyr 1927 Photo Play music co.*

18 (Action) MAN WALKS FROM GIRL AT DOOR
FANNING HIMSELFMoonlight Memories (Edwards)2¾ Min.

Musical notation for item 18. Treble clef, 2/4 time, key signature of one flat. Tempo marking: *Mod^o*. Copyright: *copyr 1926 Robbarts music corp.*

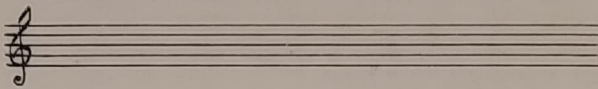
19 (Action) FADE-OUT OF GIRL SEATED ON BEDCall Me Sweetheart (Robe) (WHITE) (Verse)1½ Min.

Handwritten: LT

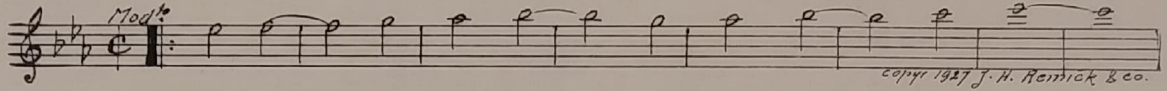
Musical notation for item 19. Treble clef, 2/4 time, key signature of one flat. Tempo marking: *Mod^o*. Copyright: *copyr 1927 G. Ricordi & Co. Inc.*

20 (Action) BEATRICE FAIRFAX WRITES LETTER ON TYPEWRITER Play "Black Bottom" (Chorus only) 1 Min.

15k
Bottom

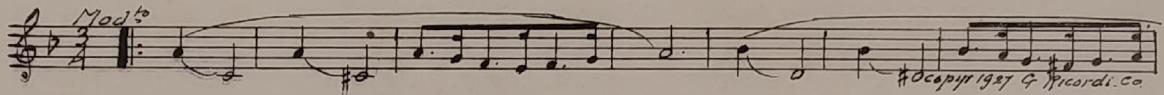


21 (Action) DANCERS STOP AND APPLAUD Joy Bells (Santly) 1 1/4 Min.

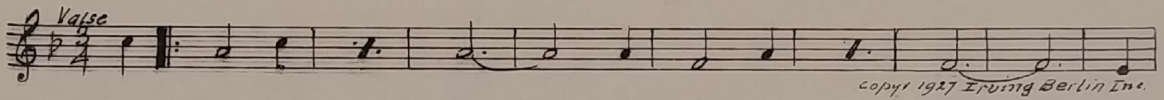


22 (Title) ANN, LET'S YOU AND ME GET MARRIED... Call Me Sweetheart (Robe) (WHITE) 3/4 Min.

LT

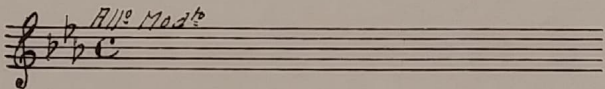


23 (Title) HOW ABOUT A LITTLE KISS C'est Vous (Greenberg) 1 Min.

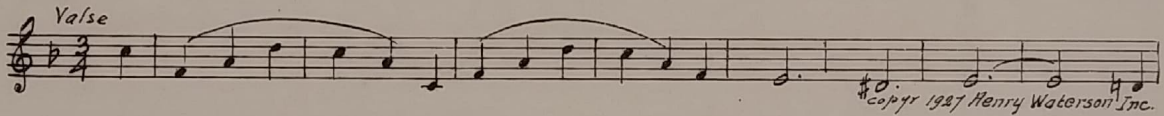


24 (Action) DANCERS STOP AND APPLAUD R.peat No. 17 (RED) 1/4 Min.

Harry

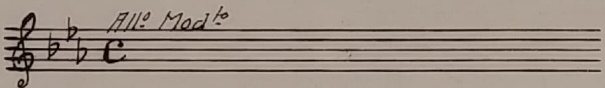


25 (Action) THEY BEGIN TO DANCE Lonesome Waltz (Wendling) 1/2 Min.



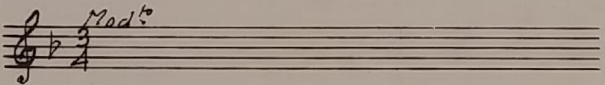
26 (Action) FADE-OUT OF DANCING SCENE Repeat No. 17 (RED) 1 1/4 Min.

Harry T. L.

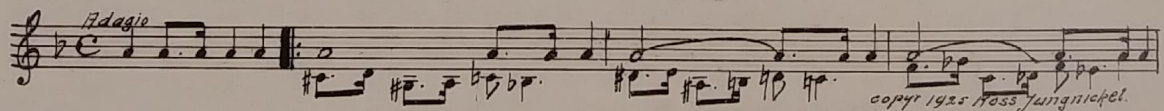


27 (Action) FADE-OUT AS MAN KISSES GIRL ON COUCH Repeat No. 22 (WHITE) 1 1/4 Min.

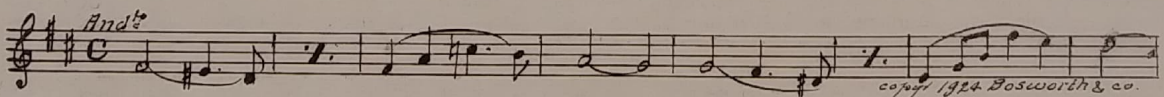
LT



28 (Action) FADE-OUT OF GIRL IN STREET TO BED SCENE Dramatic Adagio (Berge) 2 1/4 Min.

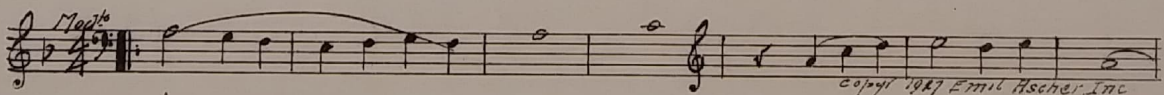


29 (Action) SISTER COMES OUT OF CLOTHES CLOSET. True Love (Ketelbev) 1 1/4 Min.



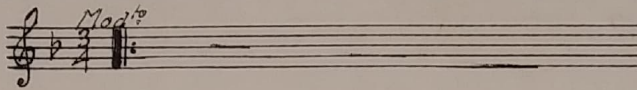
30 (Action) GIRLS IN BED Love Thoughts (Friml) (DK. GREEN) 2 1/2 Min.

And Me



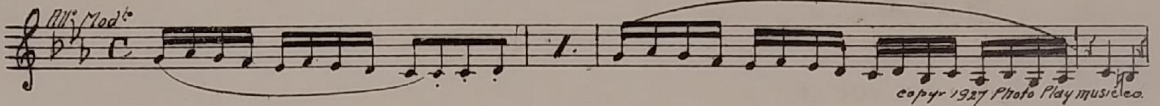
31 (Action) FADE-OUT OF GIRLS IN BED TO LETTER... Repeat No. 22 (WHITE)1¼ Min.

LT



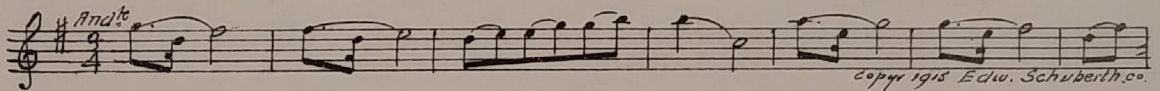
32 (Action) GIRL HAS BEATRICE FAIRFAX'S LETTER IN HAND Incid. Symphony No. 38 (Tensen) (RED)1 Min.

Hurry



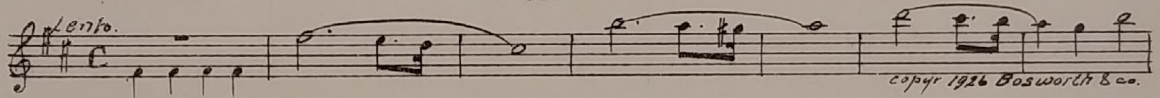
copyr 1927 Photo Play music co.

33 (Action) SCENE AFTER AUTO SHOWS ON SCREEN... Dream Chimes (Wyatt)5 Min.



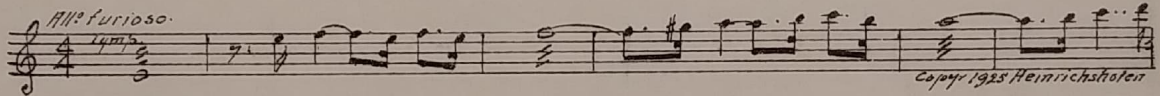
copyr 1918 Edw. Schuberth co.

NOTE: Play once and segue.
SEGUE: Sunset (Ancliffe)



copyr 1926 Bosworth & Co.

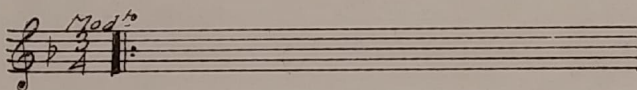
34 (Action) INTERRUPT WITH TRAIN EFFECT AFTER ANN IS SEEN SITTING ON FLOOR..... Uproar (Neinass)¾ Min.



copyr 1925 Heinrichstater

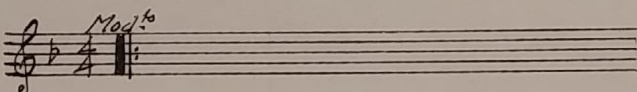
35 (Action) SISTER SHOWS ON SCREEN AFTER AGITATION Repeat No. 22 (WHITE)1¼ Min.

LT



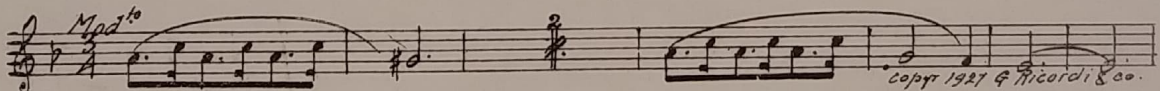
36 (Action) FADE-OUT OF TWO SISTERS Repeat No. 30 (DK. GREEN)2¾ Min.

And Me



37 (Action) BEATRICE FAIRFAX SHOWS AFTER TITLE: "WHAT A FINE DRINK OF WATER"..... Repeat No. 19 (WHITE) (Verse)2¼ Min.

LT



copyr 1927 G Ricordi & Co.

NOTE: Play one chorus only and segue to Saxophone chorus.
THE END

Proper rest period is Nos. 12 to 18 inclusive.

NOTE: The repetition of numbers in this cue sheet is simplified by the use of the "LUZ" SYMPHONIC COLOR GUIDE, sold by Music Buyers Corporation, 1520 Broadway, New York City. The color suggested for repetition of numbers designates the Mood or Emotion, and is used as a code for such repetitions.

Country of Origin, U. S. A.

Complete orchestrations and single piano parts of each separate number contained hereon, can be purchased from CAMEO MUSIC SERVICE CORPORATION, 315-317 WEST 47TH STREET, NEW YORK CITY.