

Handwritten notes:
 New
 Boats
 Bears
 Princess
 Ice
 Skates
 Towers
 Race

Thematic Music **Cue Sheet**

M. J. MINTZ (PATENT)
 JULY 31, 1923.

JOHN GILBERT
 in
THE MASKS OF THE DEVIL

with
ALMA RUBENS
A VICTOR SEASTROM PRODUCTION

From the book "The Masks of Erwin Reiner"

by Jacob Wassermann
 Treatment by Svend Gade
 Continuity by Frances Marion
 Directed by Victor Seastrom
 Compiled by Ernst Luz



A METRO-GOLDWYN-MAYER PICTURE

Length of film 8 reels (6675 feet)

Maximum projection time 1 hour, 15 minutes

- 1 **AT SCREENING**Prelude to Romances of the Seven Seas (Baron).....1 Min.

And. Maestoso

Copyr. 1924 Belwin, Inc.

- 2 (Title) **THERE IS A CHURCH**Dram. Recitative No. 1 (Levy) (RED).....1 1/4 Min.

Handwritten: Dramatic

And. dramatico

Copyr. 1917 Belwin, Inc.

- 3 (Action) **MODEL BEGINS TO LAUGH**.....Twinkling (Hauenschild)2 1/4 Min.

Allegro

Copyr. 1928 Photo Play Music Co.

- 4 (Action) **GIRL LEAVES AFTER TITLE: "THAT'S MY WEAKNESS"**By the Lake (Lange) (LT. GREEN).....1 1/4 Min.

Handwritten: Lake

Assai Mod.

Copyr. 1926 Robbins Music Co.

- 5 (Action) **MAN AT DOOR SEES LOVERS**.....Constance (Golden) (2nd Strain).....3/4 Min.

Piu mosso

Copyr. 1919 Photo Play Music Co.

- 6 (Action) **KNOCK ON DOOR**.....Repeat No. 2 (RED).....2 Min.

Handwritten: Dram

And. dramatico

- 7 (Action) **COUNT AND COUNTESS LEAVE**.....Repeat No. 4 (LT. GREEN).....1 1/4 Min.

Handwritten: Lake

Assai Mod.

8 (Action) FADE TO JEWELS..... Blossom (Fox) 1/4 Min.

Musical notation for item 8, including tempo markings *Allegro* and *Loco*, and a copyright notice: *Copyr. 1907 Sam Fox*

9 (Title) IN THE COUNTRY DOING SOME RESEARCH WORK Live and Love (Axt) (WHITE)..... 1 Min.

LT

Musical notation for item 9, including tempo marking *Valse*

Musical notation for item 9, first line

Musical notation for item 9, second line

Musical notation for item 9, third line

Musical notation for item 9, fourth line, including a second ending and copyright notice: *Copyr. 1928 Robbins Music Co.*

10 (Title) BARON REINER'S HOME..... Continue No. 9..... 3/4 Min.

Musical notation for item 10, including tempo marking *Valse*

11 (Title) I'M SO HAPPY..... Repeat No. 2 (RED)..... 1 Min.

Draw

Musical notation for item 11, including tempo marking *And. dramatico*

12 (Title) PERHAPS YOU WOKE THE REINER GHOSTS Strande d'Ostende (Hintz)..... 1 Min.

Musical notation for item 12, including tempo marking *7/8 comm. qto* and copyright notice: *Copyr. 1928 Photo Play Music*

13 (Action) FADE-OUT OF TWO BOYS TO GLASS OF WINE Live and Love (Axt) (WHITE)..... 1/4 Min.

LT

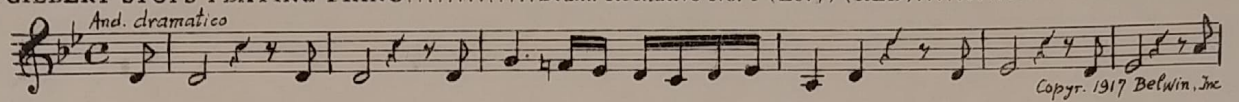
Musical notation for item 13, including tempo marking *Valse* and copyright notice: *Copyr. 1928 Robbins Mus. Co.*

14 (Action) FADE TO GLOBE AND PROFESSOR..... A Song of Supplication (Fletcher) (Piano prominent)..... 1 Min.

Musical notation for item 14, including tempo marking *slowly & sadly* and copyright notice: *Copyr. 1926 Hawkes & Son*

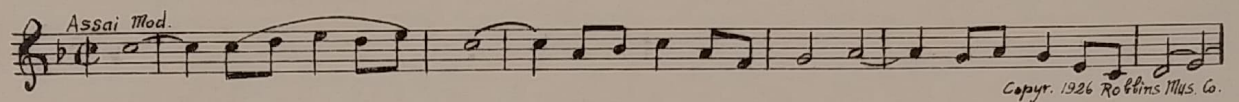
15 (Action) GILBERT STOPS PLAYING PIANO.....Dram. Recitative No. 1 (Levy) (RED).....3 Min.

Draw

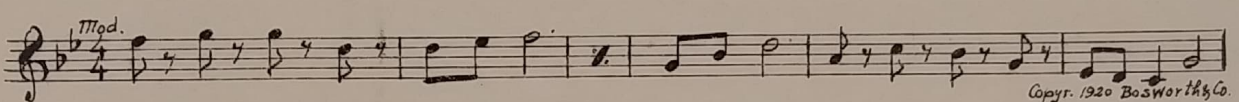
And. dramatico

Copyr. 1917 Belwin, Inc.

16 (Action) GIRL LOOKING INTO TELESCOPE.....By the Lake (Lange) (LT. GREEN).....2 Min.

Lake

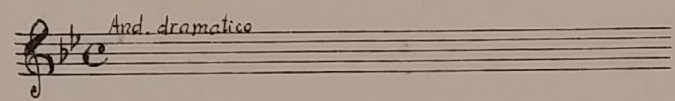
Assai Mod.

Copyr. 1926 Robbins Mus. Co.

17 (Action) JEWELS ON SCREEN.....Wedgwood Blue (Ketelbey).....1 1/4 Min.

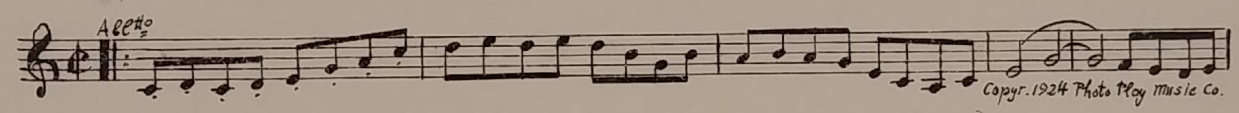
Mod.

Copyr. 1920 Bosworth & Co.

18 (Title) MANFRED. I'VE DECIDED.....Repeat No. 15 (RED).....2 1/4 Min.

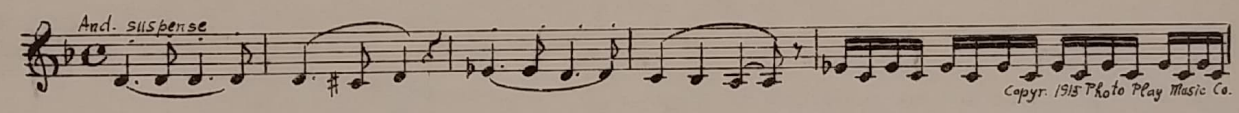
Draw

And. dramatico


19 (Title) I REMEMBER YOUR MOTHER'S PEARLS.....Lace and Ruffles (Schertzing).....1 1/2 Min.

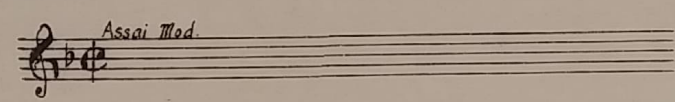
Allegro

Copyr. 1924 Photo Play Music Co.

20 (Action) WOMAN LEAVES.....A. B. C. Dram. Set No. 2-A1 (Luz).....1 1/4 Min.

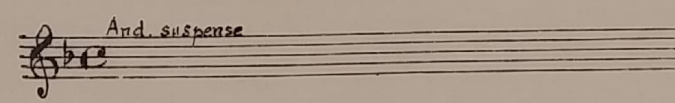
And. suspense

Copyr. 1915 Photo Play Music Co.

21 (Action) GILBERT LOOKS INTO MIRROR.....Repeat No. 16 (LT. GREEN).....3/4 Min.

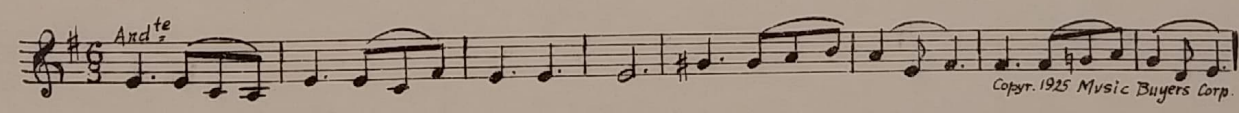
Lake

Assai Mod


22 (Title) BELOW THE EQUATOR.....Repeat No. 20 "A. B. C. Dram. Set No. 2-A1".....1/2 Min.

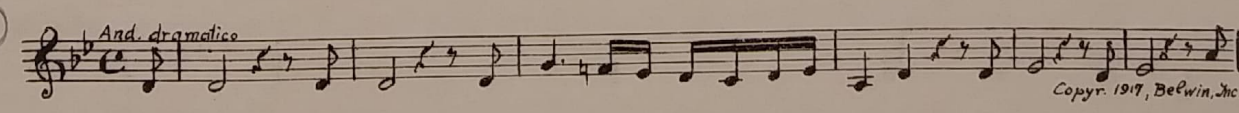
And. suspense


23 (Action) LETTER ON SCREEN.....Reproache d'Amour (Marquardt).....1 3/4 Min.

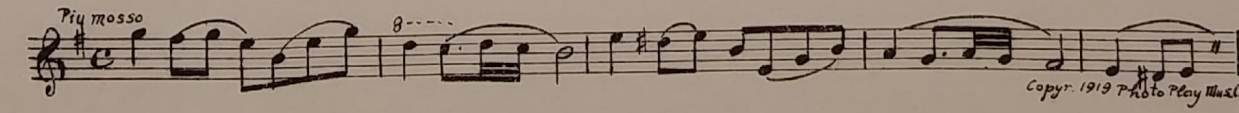
And^{te}

Copyr. 1925 Music Buyers Corp.

24 (Action) PHOTO ON SCREEN.....Dram. Recitative No. 1 (Levy) (RED).....1 1/2 Min.

Draw

And. dramatico

Copyr. 1917, Belwin, Inc.

25 (Title) WHAT'S THE MATTER WITH YOU.....Constance (Golden) (2nd Strain).....1 Min.

Piu mosso

Copyr. 1919 Photo Play Music

26 (Action) FADE-OUT TO EXTERIOR.....By the Lake (Lange) (LT. GREEN).....2¼ Min.

Lake

Assai Mod. Copyr. 1926 Robbins Mus. Co.

27 (Action) MOON HIDES BEHIND THE CLOUDS.....Agitato Mysterioso No. 14 (Nortor).....¾ Min.

Allegro Copyr. 1920 W. Jacobs

28 (Action) COAT PLACED AROUND GIRL.....Repeat No. 24 (RED).....1 Min.

Draw

And. dramatico

29 (Title) I CAN'T UNDERSTAND.....Repeat No. 26 (LT. GREEN).....¾ Min.

Lake

Assai Mod.

30 (Action) FADE-OUT AS GILBERT IS SEEN STROKING GIRL'S HAIR.....Sonva (Fisher).....1 Min.

Mod. 8--- Copyr. 1925 Irving Berlin

31 (Action) END OF DANCE—PEOPLE APPLAUD.....Jolly Sweethearts (Losey).....1 Min.

Allegro Copyr. Vanderslith Music Co.

32 (Action) CLOSE-UP OF GILBERT AND GIRL AT TABLE.....Mon Ami (Rockwell).....1¼ Min.

Valse Copyr. Ludwig Music Co.

33 (Action) GILBERT WALKS TO BALCONY WITH GIRL.....Dram. Recitative No. 1 (Levy) (RED).....2¼ Min.

Draw

And. dramatico Copyr. 1917 Belwin, Inc.

34 (Title) YOU ARE STRONG.....Canzone d'Amore (Lowitz).....3¼ Min.

And. grazioso Copyr. 1927 S. Schirmer

35 (Title) DON'T BE ABSURD.....A. B. C. Dram. Set No. 2-B2 (Luz).....1 Min.

Allegro Copyr. 1915 Photo Play Music Co.

36 (Action) AFTER ACCIDENT.....Love's Ecstasy (McElwain).....1 Min.

And. Mod^{to} Copyr. 1927 Carl Fischer

37 (Action) **BEDROOM SCENE** Dram. Tension No. 2 (Ancliffe)..... 1¼ Min

Con fuoco *B* loco

Copyr. 1926 Bosworth Co.

38 (Action) **COUNT DIES** A. B. C. Dram. Set. No. 2-A1 (Luz)..... 1 Min.

And. suspense

Copyr. 1915 Photo Play Mus. Co.

39 (Action) **FADE-OUT OF GILBERT**..... Valse Nanette (Friml)..... 1½ Min.

Valse

Copyr. 1926 Emil Ascher

40 (Action) **WOMAN TAKES CHECK OUT OF COAT POCKET** Live and Love (Axt) (WHITE)..... 1¼ Min.

LT

Valse

Copyr. 1928 Robbins Music Co.

41 (Action) **GILBERT HAS PHOTO IN HAND**..... Repeat No. 33 (RED)..... 1 Min.

Dram

And. dramatico

42 (Title) **I LOVE YOU**..... Love's Emotion (Marquardt)..... 1½ Min

And. Appass.

Copyr. 1928 Music Buyers Corp.

43 (Action) **GILBERT PUTS ON COAT TO LEAVE HOUSE** Storm Scene from "William Tell" (Rossini)..... ½ Min.

All.^o (Storm)

Copyr. 1912 Carl Fischer

44 (Action) **GILBERT ENTERS BEDROOM**..... By the Lake (Lange) (LT. GREEN)..... 1 Min.

Lake

Assai Mod.

Copyr. 1926 Robbins Mus. Co.

45 (Title) **MINE, MINE** A. B. C. Dram. Set. No. 2-A1 (Luz)..... ½ Min.

And. suspense

Copyr. 1915 Photo Play Mus. Co.

46 (Action) **FADE-OUT AFTER TITLE: "UN-REACH-ABLE"** Continue No 45..... 1¼ Min.

And. suspense

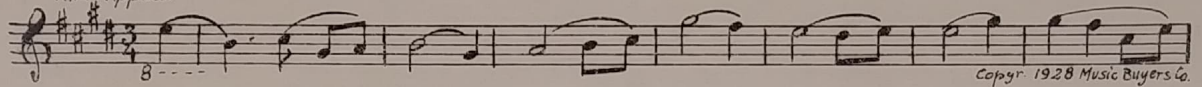
47 (Action) **STOP AS GILBERT BREAKS MIRROR** Road of Sorrow (Kempinski)..... 2¼ Min

2

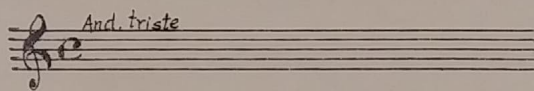
And. triste

Copyr. 1925 Photo Play Music Co.

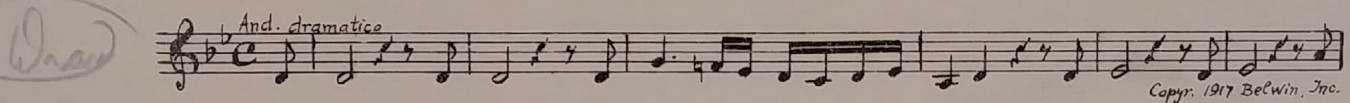
48 (Title) DON'T CALL ME FRIEND..... Love's Emotion (Marquardt).....2 Min.
And. Appass.



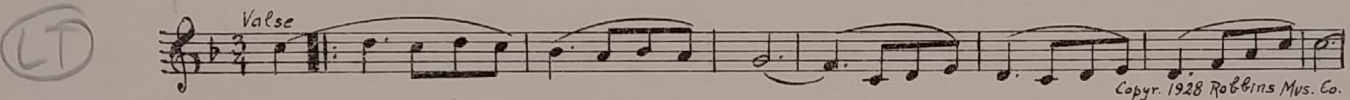
49 (Action) STOP AS SHOT IS FIRED..... Repeat No. 47 "Road of Sorrow".....1½ Min.



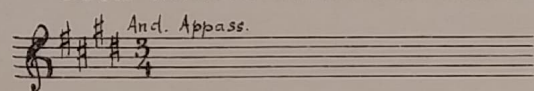
50 (Title) MANFRED AS COME BACK..... Dram. Recitative No. 1 (Levy) (RED).....1¼ Min.



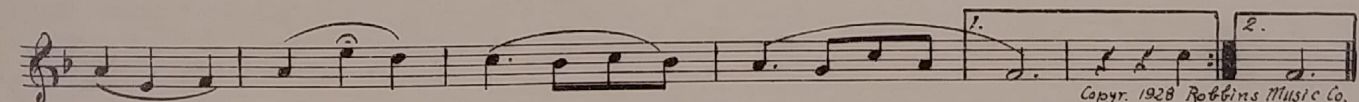
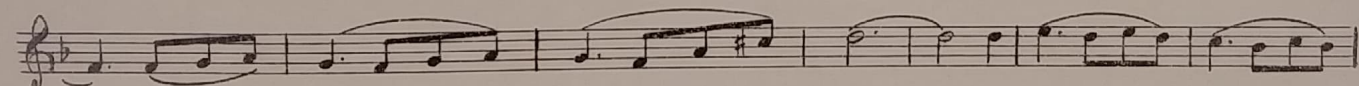
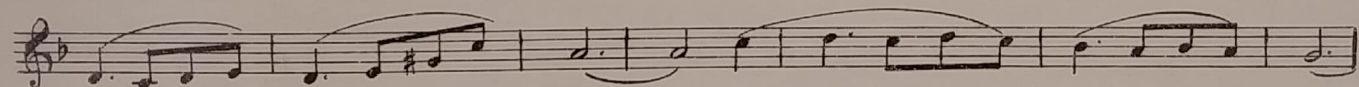
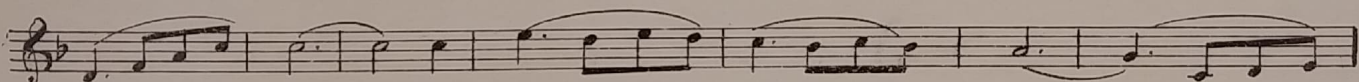
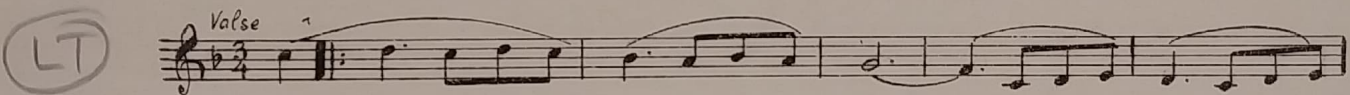
51 (Title) DON'T LOOK SO TRAGIC..... Live and Love (Axt) (WHITE).....1 Min.



52 (Action) GILBERT STOPS BOY FROM LEAVING ROOM..... Repeat No. 48 "Love's Emotion".....½ Min.



53 (Action) AFTER MANFRED LEAVES ROOM..... Live and Love (Axt) (WHITE).....2 Min.



THE END

Proper orchestral rest period is Nos. 24 to 37 inclusive.

NOTE: The repetition of numbers in this cue sheet is simplified by the use of the "LUZ" SYMPHONIC COLOR GUIDE, sold by Music Buyers Corporation, 1520 Broadway, New York City. The color suggested for repetition of numbers designates the Mood or Emotion, and is used as a code for such repetitions.
 Country of Origin, U. S. A.

Complete orchestrations and single piano parts of each separate number contained hereon, can be purchased from CAMEO MUSIC SERVICE CORPORATION, 315-317 WEST 47TH STREET, NEW YORK C. Y.