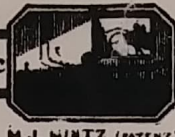


Dix

Thematic Music Cue Sheet



M. J. NINTZ (PATENT)
JULY 31, 1923.

Richard A. Rowland
presents
"THE PRIVATE LIFE OF HELEN OF TROY"
by John Erskine
with
LEWIS STONE, MARIE CORDA and RICARDO CORTÉZ
Compiled by James C. Bradford
A First National Picture

1 AT SCREENING Cortège (Lowitz) 1 Min.

Alla Marcia.

Copyright 1927 G. Schirmer, Inc.

2 (Title) EVERYBODY IS INTERESTED IN On A Woodland Glade (Rav) 3/4 Min.

And^{te} mod^{to} *sva* *largo.*

Copyright 1926 Carl Fischer, Inc.

3 (Title) IT ALL STARTED Au Desert (Grandjean) 3/4 Min.

Ben marcato.

1926 Manus Music Co.

4 (Title) IN THE WHITE HOUSE Gigue (Bradford) 2 3/4 Min.

Vivace

Copyright 1927 Robbins Music Co.

5 (Title) THERE, THERE, DEAR I'm Sorry I Made You Cry (Clesi) 1 Min.

Mod^{to}

Copyright 1928 Leo Feist, Inc.

6 (Title) ACROSS THE AGEAN SEA Kismet (Henlere) 3/4 Min.

NOTE: Play a la burlesque.
All^{te} Mod^{to}

Copyright 1920 Will Koster, Inc.

7 (Action) VALET ENTERS Ye Bold Buccaneer (Copping) 1 1/2 Min.

Marcia Pomposa.

Copyright 1927 Carl Fischer, Inc.

8 (Action) OFFICER STOPS CHARIOT Big Boy (Ager) 3/4 Min.

Mod^{to}

Copyright 1924 Ager, Yellen & Bernstein, Inc.

9 (Title) EVEN IN ANCIENT SPARTA Men of Sparta (Zamecnik) 2½ Min.

Musical notation for 'EVEN IN ANCIENT SPARTA' with tempo marking 'Marziale' and copyright '© 1927 Saml Fox Pub. Co.'

10 (Title) GENERAL ACHILLES THEME: Razzing Theme (Rapee) ½ Min.

Fake Razzing Th

Musical notation for 'GENERAL ACHILLES' with tempo marking 'Mod^{to} viv' and copyright '© 1927 Belwin Inc.'

11 (Title) THE QUEEN'S MAID Diane (Rapee) 1¼ Min.

Fake Dianne

Musical notation for 'THE QUEEN'S MAID' with tempo marking 'Valse' and copyright '© 1927 Sherman & Clay Co.'

12 (Title) THE KING SAYS YOU MUST Just Like A Butterfly (Woods) 1 Min.

Fake Just Like a Butterfly

Musical notation for 'THE KING SAYS YOU MUST' with tempo marking 'Mod^{to}' and copyright '© 1927 J. H. Remick & Co.'

13 (Title) HERE'S THE DRESSMAKER Polly (Zamecnik) 1½ Min.

Musical notation for 'HERE'S THE DRESSMAKER' with tempo marking 'Mod^{to}' and copyright '© 1926 Saml Fox Pub. Co.'

14 (Title) ALL THE DAY Overture Champetre (Snoek) ¾ Min.

Musical notation for 'ALL THE DAY' with tempo marking 'Maestosa' and copyright 'Manus Music Co.'

15 (Action) KING SITS DOWN I'm Tired (Jerome) 1¼ Min.

Musical notation for 'KING SITS DOWN' with tempo marking 'Languid' and copyright '© 1927 J. H. Remick & Co.'

16 (Action) HELEN APPEARS IN NEW GOWN Gorgeous (Akst) 2 Min.

Musical notation for 'HELEN APPEARS IN NEW GOWN' with tempo marking 'Mod^{to}' and copyright '© 1927 J. H. Remick & Co.'

17 (Title) THE WIFE WANTED TO GO Mortels Poisons (Fosse) 1¼ Min.

Musical notation for 'THE WIFE WANTED TO GO' with tempo marking 'Mod^{to}' and copyright '© 1926 J. Yves.'

18 (Title) INTERMISSION Fanchonette (Klemm) 1½ Min.

Musical notation for 'INTERMISSION' with tempo marking 'Mod^{to}' and copyright '© 1927 Belwin Inc.'

19 (Title) A SPARTAN DRAMA HAD TWELVE ACTS... Elopement (Carrozzini) 3/4 Min.

Musical notation for item 19: Treble clef, 2/4 time, key of B-flat major. Tempo: *Vivace* *sva*. Copyright 1926 Sonnemann Music Co.

20 (Title) WASN'T IT A WONDERFUL EVENING Two In A Bar (Copping) 2 Min.

Musical notation for item 20: Treble clef, 2/2 time, key of B-flat major. Tempo: *Tempo di Fuga*. Copyright 1926 Geo. H. Sanders Inc.

Fake Home Sweet Home

NOTE: Use the "Home Sweet Home" part only.
21 (Action) HELEN PLACES HER ARMS AROUND KING Cuddle Closer (Schwartz) 1 1/4 Min.

Musical notation for item 21: Treble clef, 3/4 time, key of B-flat major. Tempo: *Mod^{to}*. Copyright 1927 Villa Morea Inc.

22 (Action) KING CLIMBS INTO BED Berceuse Comique (Kilenyi) 1 Min.

Musical notation for item 22: Treble clef, 3/8 time, key of B-flat major. Tempo: *Mod^{to}*. Copyright 1926 Carl Fischer Inc.

23 (Action) HELEN WALKS TOWARD DOOR One O'Clock Baby (Jolson) 3/4 Min.

Musical notation for item 23: Treble clef, 2/4 time, key of B-flat major. Tempo: *Mod^{to}*. Copyright 1927 De Sylva Brown & Henderson Inc.

24 (Action) KING OUT OF BED—CLOSES DOOR Chatter (Kahn) 3/4 Min.

Musical notation for item 24: Treble clef, 2/4 time, key of B-flat major. Tempo: *All^o*. Copyright 1926 Sontheim Music Co.

25 (Title) HUSBANDS DON'T GET HOME Could I? (Ager) 1 1/4 Min.

Musical notation for item 25: Treble clef, 2/4 time, key of B-flat major. Tempo: *Mod^{to}*. Copyright 1926 Ager, Jellen & Bornstein, Inc.

26 (Action) KING ENTERS Baby Face (Akst) 1 Min.

Musical notation for item 26: Treble clef, 2/4 time, key of B-flat major. Tempo: *Mod^{to}*. Copyright 1926 T. H. Remick & Co.

Fake Baby Face

27 (Title) AND SO THE QUEEN FOUND Adorable (Wynburn) 1 Min.

Musical notation for item 27: Treble clef, 2/4 time, key of B-flat major. Tempo: *Mod^{to}*. Copyright 1926 Leo Feist Inc.

28 (Title) A DARK MAN Don't Wake Me Up (Baer) 1/2 Min.

Musical notation for item 28: Treble clef, 2/4 time, key of B-flat major. Tempo: *Mod^{to} sva*. Copyright 1925 Leo Feist Inc.

29 (Action) GENERALS ENTER Repeat Theme No. 10 1 Min.

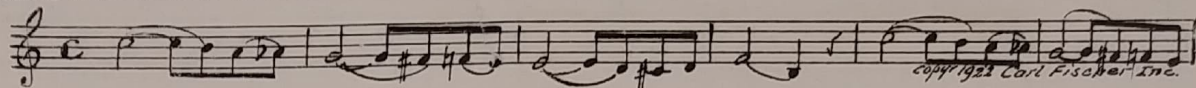
Musical notation for item 29: Treble clef, 2/4 time, key of B-flat major. Tempo: *Mod^{to}*. Copyright 1925 Leo Feist Inc.

Fake Ross

30 (Title) BOSS, THIS COUNTRY The Tin Soldier (Cui) 1 Min.

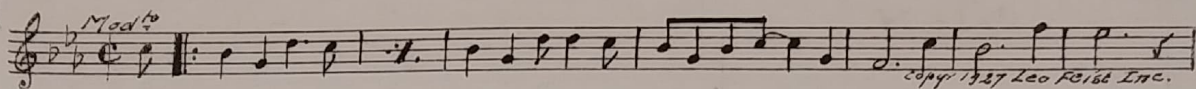
Musical notation for item 30: Treble clef, 2/4 time, key of B major. Tempo: *Tempo di Marcia*. Copyright 1927 G. Schirmer Inc.

31 (Title) PARIS AND HELEN My Heart At Thy Sweet Voice (St. Saens) 1½ Min.



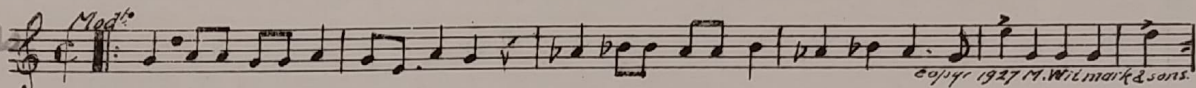
32 (Action) HELEN HURRIES TOWARD KING Someday You'll Say O. K. (Donaldson) ¾ Min.

*Fake
someday you'll
say O.K.*



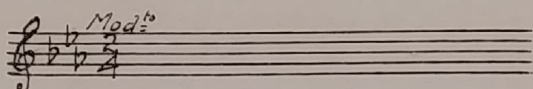
33 (Action) HELEN RETURNS TO PARIS Two Little Pretty Birds (Tucker) 1 Min.

*Fake
Two little
pretty birds*

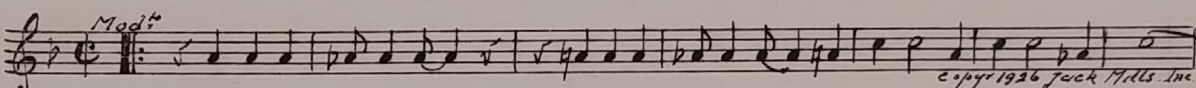


34 (Action) FLASH-BACK TO OFFICERS Repeat Theme No. 10 ½ Min.

Ross Th



35 (Action) HELEN AND PARIS LOVE MAKING How Could Red Riding Hood (Randolph) ¾ Min.

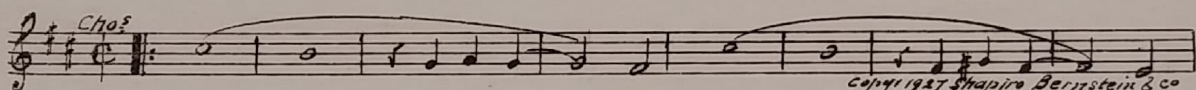


36 (Title) THE MOST IMPORTANT DATE The Chatterbox (Sanders) 1½ Min.

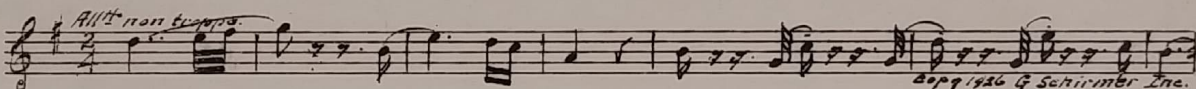


37 (Action) HELEN AND PARIS ON DIVAN Bye-Bye Pretty Baby (Gardner) ¾ Min.

*Fake
Bye Bye
Pretty Baby*

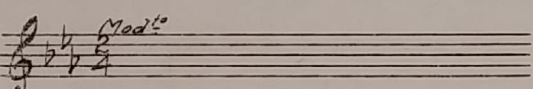


38 (Title) CAME THE DAWN Cat and Mice (Leonard) 1¼ Min.

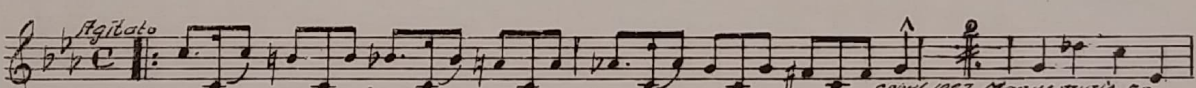


39 (Action) THE GENERALS ENTER Repeat Theme No. 10 1 Min.

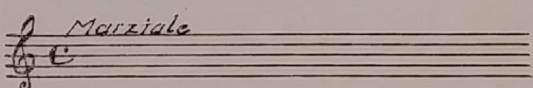
Ross Th



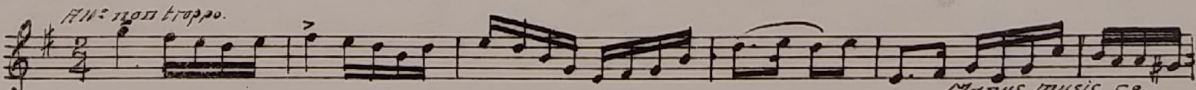
40 (Title) ALREADY THE PEOPLE OF SPARTA The Destruction of the Temple (Darcieux) 1½ Min.



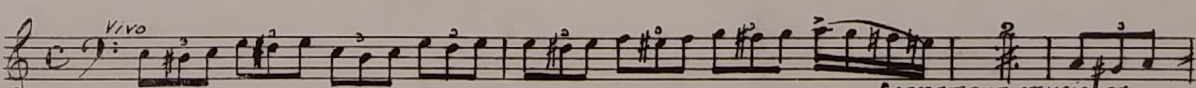
41 (Title) SPARTA HAS STOOD ENOUGH Repeat No. 9 "Men of Sparta" ½ Min.



42 (Title) IT TAKES A LONG TIME Le Portrait de Nicole (Mouton) ¾ Min.



43 (Title) WAR! HER HUSBAND IS COMING La Folie (Franceschi) 2¾ Min.



5

44 (Title) CHEERS AND TEARS Repeat No. 7 "Ye Bold Buccaneer" 1/4 Min.

Musical notation for "Cheers and Tears" with tempo marking *Marcia Pomposo*.

45 (Title) AND SO HELEN FOUND Notte Misteriosa (Bece) 2 Min.

Musical notation for "And So Helen Found" with tempo marking *And^{te} quasi Lento*.

46 (Action) HELEN ENTERS GENERAL'S TENT Fourteen Fathoms Deep (Lake) 1/4 Min.

Musical notation for "Helen Enters General's Tent" with tempo markings *Mod^{to} svz* and *Loco*.

47 (Action) AJAX KNEELS AT HELEN'S FEET She's Got "It" (Davis) 3/4 Min.

Musical notation for "Ajax Kneels at Helen's Feet" with tempo marking *Mod^{to}*.

48 (Title) SO THEY WERE DRAGGED ON Entrance of the Heroes (Herbert) 1/4 Min.

Musical notation for "So They Were Dragged On" with tempo marking *Maealoso*.

49 (Title) HELEN WANTED THE HORSE Horses (Gay) 2 Min.

Fake Horses

Musical notation for "Helen Wanted the Horse" with tempo marking *Mod^{to}*.

50 (Title) ARMISTICE NIGHT Zip (Frey) 1/2 Min.

Musical notation for "Armistice Night" with tempo marking *Golop*.

51 (Title) THE STRATEGY OF MENELAOS Prelude to "Mystery Drama" (Baron) 1 1/2 Min.

Musical notation for "The Strategy of Menelaos" with tempo marking *And^{te} Mod^{to}*.

52 (Action) GUARDS RUN Threatening Danger (Bece) 3/4 Min.

Musical notation for "Guards Run" with tempo marking *And^{te} Largo*.

53 (Action) PARIS APPROACHES BED Imprecations (Baron) 1 1/2 Min.

Musical notation for "Paris Approaches Bed" with tempo marking *All^o furioso*.

54 (Action) SOLDIERS ENTER GATE Repeat No. 9 "Men of Sparta" 1/4 Min.

Musical notation for "Soldiers Enter Gate" with tempo marking *Mazurka*.

55 (Action) DRESSMAKER LOOKS UP Narcissus (Nevin) 3/4 Min.

Keep Out

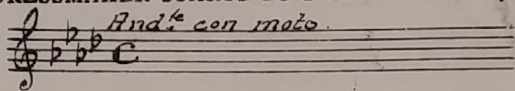
Musical notation for "Dressmaker Looks Up" with tempo marking *And^{te} con moto*.

56 (Title) HE LIKES HORSES Repeat No. 49 "Horses" 3/4 Min.

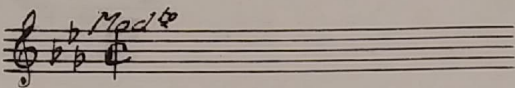
Fake Horses

Musical notation for "He Likes Horses" with tempo marking *Mod^{to}*.

57 (Action) DRESSMAKER STARTS TO SWEEP Repeat No. 55 "Narcissus" ¾ Min.

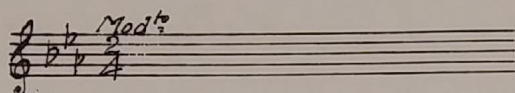


58 (Action) DRESSMAKER LOOKS UP Repeat No. 49 "Horses" ¼ Min.



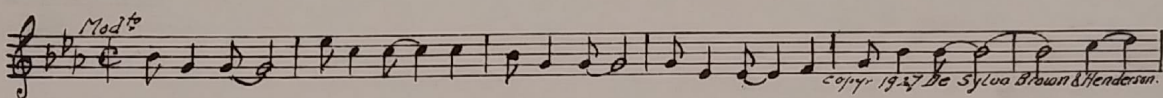
Fake Horses

59 (Title) THE LAST TROJAN IS CAPTURED Repeat Theme No. 10 1 Min.



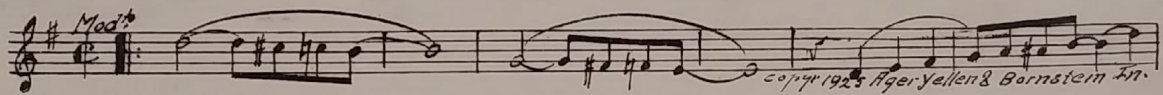
Fake Trojan

60 (Action) HELEN APPEARS Broken Hearted (Henderson) 1 Min.



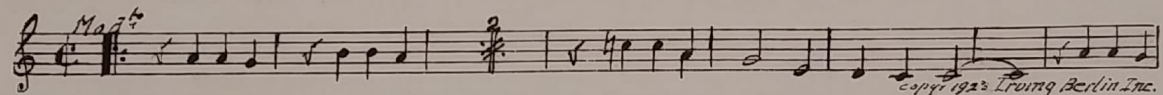
Fake Hearts & Flowers

61 (Action) KING OPENS DOOR Cheatin' On Me (Pollack) 1¼ Min.

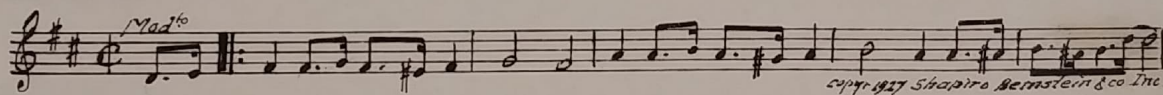


Fake Cheatin' Mel

62 (Action) HELEN OPENS CAPE Oh Baby (Donaldson) ½ Min.

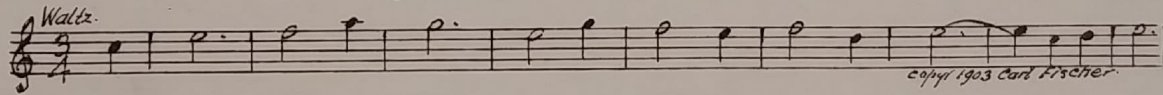


63 (Title) AW, COME ON HELEN Side by Side (Woods) 1 Min.



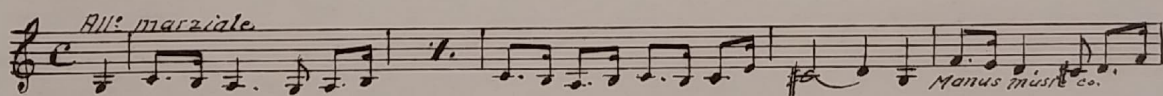
Fake Side by Side

64 (Title) BACK TO NORMALCY Home Sweet Home (Margis-Berger) 1 Min.

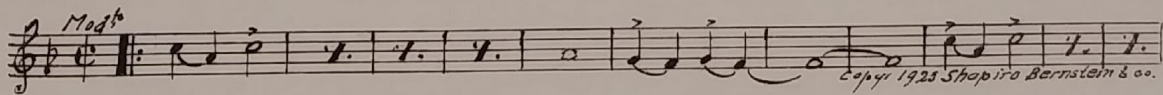


Fake Home Sweet Home

65 (Title) I AM THE PRINCE OF ITHACA Le Serment de Mathurin (Snoek) 1¼ Min.

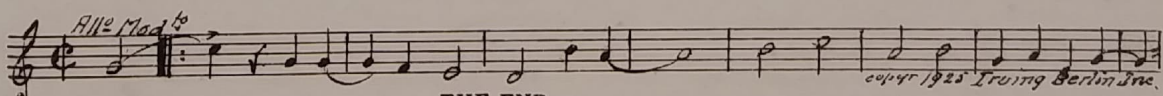


66 (Action) HELEN ENTERS Oh Boy, What A Girl (Green) 1¼ Min.



Fake Oh Boy What a Girl

67 (Action) PRINCE KISSES HER HAND So That's the Kind of A Girl You Are (Burke) 2 Min.



THE END

Printed in U. S. A.

Complete orchestrations and single piano parts of each separate number contained hereon, can be purchased from CAMEO MUSIC SERVICE CORPORATION, 315-317 WEST 47TH STREET, NEW YORK CITY.