


*John
H. ...
...*

Thematic Music  **Cue Sheet**

M. J. MINTZ (PATENT)
JULY 31, 1923.

Samuel Goldwyn
presents

RONALD COLMAN

in
“THE RESCUE”

BY JOSEPH CONRAD

with

LILY DAMITA

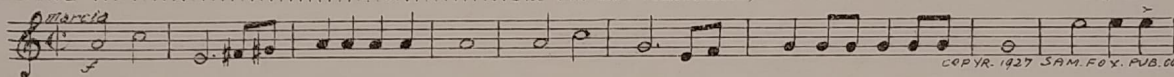
A HERBERT BRENON PRODUCTION

Compiled by Ernst Luz
United Artists Picture

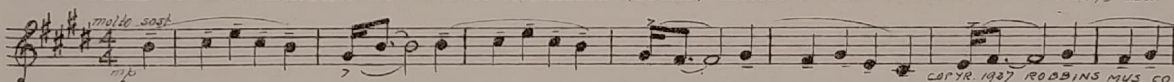
Length of film 7970 feet (9 reels)

Maximum projection time 1 hour, 32 minutes

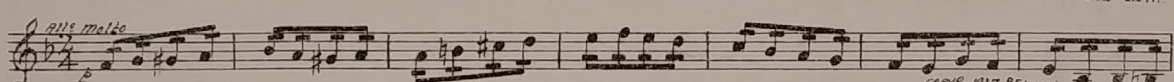
1 AT SCREENING The Corsairs (Riesensfeld) 1¼ Min



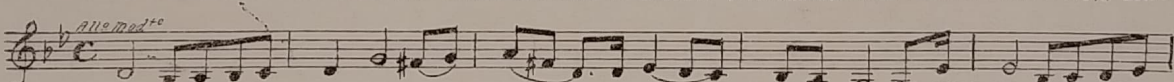
2 (Title) ADVENTURE AND ROMANCE Desolation (Savino) 2½ Min.



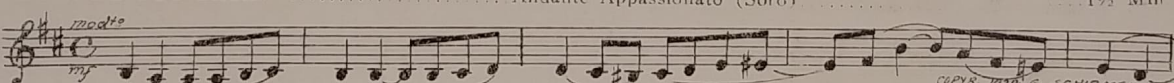
3 (Title) OARS, MASTER Perpetuum Mobile (Rapee) 1¼ Min.



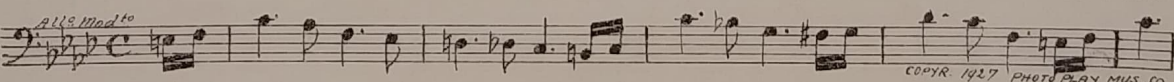
4 (Title) MY NAME'S CARTER The Lure of Crimson (Marquardt) 3¼ Min.



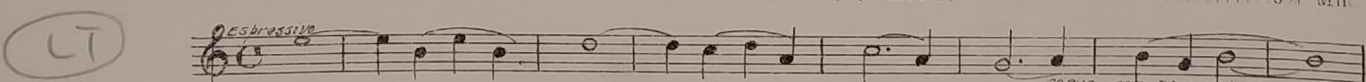
5 (Title) I'LL TAKE YOU BACK Andante Appassionato (Soró) 1½ Min.



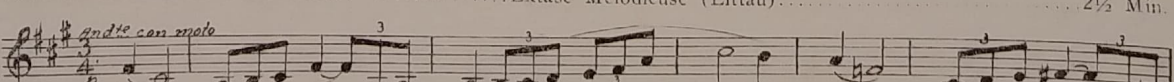
6 (Title) GO OUT AGAIN Incid. Symphony No. 36 (Kempinski) 1 Min.



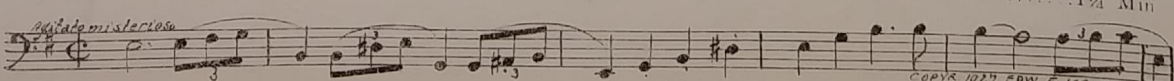
7 (Action) GIRL WALKS UP TO COLMAN Dawn (Savino) (WHITE) 3¼ Min.



8 (Title) WHERE ARE THE OTHERS Extase Melodieuse (Littau) 2½ Min.



9 (Title) IT BEGAN AT WAJO The Conspirators (Roder) 1¼ Min.



LT

10 (Action) FADE TO INTERIOR ORIENTAL SCENE Furioso No. 2 (Armandola)..... 1¼ Min

Musical notation for item 10: Treble clef, 4/4 time, *All.^o* tempo, *f* dynamics. Copyright 1925 ROEHR BERLIN.

11 (Title) I AM HASSIM..... Vision Orientale (Marquardt)..... 1½ Min

Musical notation for item 11: Treble clef, 4/4 time, *molto mod^{to}* tempo, *mf* dynamics. Copyright 1927 MUSIC BUYERS.

12 (Title) BUT HASSIM'S PEOPLE..... Traitrises (Le Rev)..... 1¼ Min

Musical notation for item 12: Treble clef, 4/4 time, *mod^{to}* tempo, *ff* and *mf* dynamics. Copyright H. BENJAMIN PARIS.

13 (Title) THEY ESCAPED Interlude from "Aiglala" (De Leone)..... 2 Min

Musical notation for item 13: Treble clef, 4/4 time, *Lento sost* tempo, *p* dynamics. Copyright 1924 G. SCHIRMER.

14 (Action) CLOSE-UP OF SHIP IN FULL SAIL..... Marche Annamite (Dupin) 2½ Min

Musical notation for item 14: Treble clef, 3/4 time, *military march* tempo, *p* dynamics. Copyright 1927 BENJAMIN PARIS.

15 (Action) CLOSE-UP OF TWO BIG DRUMS..... Rhapsodie Javanaise (Seelig) (BROWN)..... 3¼ Min

Java

Musical notation for item 15: Treble clef, 4/4 time, *alla mod^{to}* tempo, *ff* dynamics. Copyright 1913 HUG & CO LEIPZIG.

16 (Title) LET THIS RING..... Eva Selection (Lehar) (LIGHT GREEN)..... 2¼ Min

Waltz

Musical notation for item 16: Treble clef, 4/4 time, *All^o Mod^{to}* tempo, *f* dynamics. Copyright 1912 G. SCHIRMER.

NOTE: Play first 41 bars of selection only.

17 (Action) SHIPS SEEN AT OPENING IN ROCKS..... Repeat No. 7 (WHITE)..... 2¼ Min

LT

Musical notation for item 17: Treble clef, 4/4 time, *espressivo* tempo, *p* dynamics.

18 (Title) WATCH THE LIGHT..... Desespori (Fosse) 2½ Min

Musical notation for item 18: Treble clef, 4/4 time, *Lento* tempo, *f* dynamics. Copyright 1927 H. BENJAMIN PARIS.

19 (Title) TAKE ME TO THE LIGHTNING..... Repeat No. 16 (LT. GREEN)..... 2 Min

Waltz

Musical notation for item 19: Treble clef, 4/4 time, *all^o mod^{to}* tempo, *f* dynamics.

NOTE: Play first 41 bars of selection only.

20 (Title) TURN AWAY FROM HER..... Resignation (Schertzing) 1 Min

Musical notation for item 20: Treble clef, 4/4 time, *And^{te}* tempo, *f* dynamics. Copyright 1924 PHOTOPLAY MUSIC CO.

21 (Action) OPEN DOOR SHOWS SAILORS PLOTTING..... Incid. Symphony No. 4 (Kempinski)..... 2 Min

Musical notation for item 21: Treble clef, 4/4 time, *And^{te}* tempo, *f* dynamics. Copyright 1922 PHOTOPLAY MUS. CO.

22 (Title) I'LL COME Repeat No. 7 (WHITE)..... 3¼ Min

LT

Musical notation for item 22: Treble clef, 4/4 time, *espressivo* tempo, *p* dynamics.

23 (Action) FADE TO NATIVE SCENE--THRONE AND CROWD Repeat No. 15 (BROWN)..... 2¼ Min

Java

Allo mod^{to}
Musical notation for item 23

24 (Title) HAVE YOU LOST YOUR SENSES..... Symphonic Incidentals No. 1 (Marquardt) 1 Min

con impeto
ff
Musical notation for item 24
COPYR. 1926 MUSIC BUYERS CO

25 (Title) OUT ACROSS THE WATER..... Toquade Macabre (Fosse)..... 2½ Min.

Allo Mod^{to}
mf
Musical notation for item 25
COPYR. 1927 H. BENJAMIN PARIS

26 (Title) NIGHT ON THE DECK..... Repeat No. 7 (WHITE)..... 3¼ Min

LT

Espressivo
Musical notation for item 26

27 (Action) PLAY ONCE AND SEGUE..... By the Fireside (Helfand)..... 2¼ Min

And^{te} con moto
p
Musical notation for item 27
COPYR. 1925 IRVING BERLIN

28 (Action) WOMAN AT MAN'S BEDSIDE..... Sinister Agitato (Bece)..... 1 Min.

Agitato Misterioso
mf
Musical notation for item 28
COPYR. 1926 BELWIN

29 (Action) WOMAN GOES TO COLMAN FROM BEDSIDE Fanciful Vision (Rubenstein)..... 3½ Min

Adagio
p
Musical notation for item 29
COPYR. G. SCHIRMER

30 (Action) WOMAN AND COLMAN SHAKE HANDS..... Melodie Appassionato No. 1 (Marquardt)..... 1½ Min.

Appassionato
f
Musical notation for item 30
COPYR. 1928 MUSIC BUYERS CORP.

31 (Action) FLAMING TORCHES SHOW..... Repeat No. 28 "Sinister Agitato"..... 2¼ Min.

Agitato misterioso
mf
Musical notation for item 31

32 (Title) THERE'S NO BOAT..... Repeat No. 15 (BROWN)..... 1½ Min.

Java

Allo mod^{to}
Musical notation for item 32

33 (Title) WHILE LINGARD WAITED..... Allegro Infernale (Aborn)..... 3¼ Min

Mod^{to} (a 2)
p
guitar
Musical notation for item 33
COPYR. 1921 BELWIN INC.

34 (Action) WOMAN TAKES RING FROM SAILOR..... The Lure of Crimson (Marquardt)..... 2¼ Min

Allo mod^{to}
Musical notation for item 34
COPYR. 1925 MUSIC BUYERS CO

35 (Action) WOMAN WITH TORCH FALLS TO GROUND... Dawn (Savino) (WHITE)..... 2¼ Min.

LT

Espressivo
p
Musical notation for item 35
COPYR. 1927 PAUL WHITE MAN PUB.

36 (Title) WITH THE FIRST LIGHT.....War Dance from "T'Chaka" (Ring).....2 1/4 Min

37 (Action) NATIVE BEATS HANGING DRUM.....Attente Fievreuse (Fosse).....2 1/4 Min

38 (Action) NATIVE TAKES COVERS OFF HATCHES.....Oriental Furioso (Boehnlein).....2 Min

39 (Title) SILENCE.....Excitement and Hurry (Hoffman).....1 Min

40 (Action) BOAT BLOWN UP.....Betrayed Love (Bakaleinikoff).....1 Min

LD

41 (Title) AT THE CLOSE.....Repeat No. 15 (BROWN).....1 Min

Java

42 (Action) COLMAN ON DECK OF BOAT AT WHEEL.....Symphonic Incidentals No. 13 (Marquardt).....3 1/4 Min

43 (Action) COLMAN ON BEACH AT GRAVE.....Repeat No. 35 (WHITE).....2 1/4 Min

LY

44 (Title) BUT NOW.....Ye Who Have Yearned Alone (Tschaiakowsky).....2 1/4 Min

45 (Action) COLMAN SITS AT GRAVE.....Repeat No. 16 (LT GREEN).....1 Min

Waltz

NOTE: Play first 41 bars of selection only—slowly.

THE END

Proper orchestral rest period is Nos. 18 to 24 inclusive.

NOTE: The repetition of numbers in this cue sheet is simplified by the use of the "LUZ" SYMPHONIC COLOR GUIDE, sold by Music Buyers Corporation, 1520 Broadway, New York City. The color suggested for repetition of numbers designates the Mood or Emotion, and is used as a code for such repetitions. Country of Origin, U. S. A.

Complete orchestrations and single piano parts of each separate number contained hereon, can be purchased from CAMEO MUSIC SERVICE CORPORATION, 315-317 WEST 47TH STREET, NEW YORK CITY