

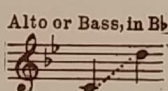
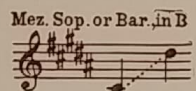
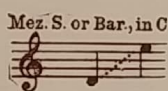
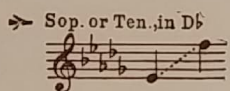
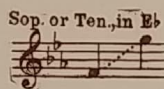
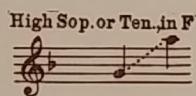
# THE ROSARY

BY  
ETHELBERT NEVIN

WORDS BY  
ROBERT CAMERON ROGERS

## VOCAL EDITIONS

Song with Piano Accompaniment (Six Keys)



- Edition with English, French & German words (6 Keys) .60
- Edition with French & English words (F, D♭, C, B♭) .60
- Edition with German & English words (E♭, D♭, C, B♭) .60
- Edition with Italian & English words (D♭) .60
- Edition with Spanish & English words (6 Keys) .60
- Edition with Esperanto & Eng. words (D♭) .60
- Edition with Violin obbligato (E♭, C) .60
- Song with Guitar Accompaniment .50
- Duet for Sop. and Alto, in E♭ .60
- Duet for Sop. and Ten., in E♭ .60
- Duet for Mez. Sop. and Bar., in C .60
- Quartet for Mixed Voices .15
- Quartet for Men's Voices .15
- Quartet for Women's Voices .15
- THE HOLY HOUR—Edition with Sacred words for Church use (E♭, C, B♭) .60
- THE HOLY HOUR—Quartet for Mixed Vo. .15
- THE HOLY HOUR—Quartet for Men's Vo. .15
- THE HOLY HOUR—Quartet for Women's Voices .15

## INSTRUMENTAL ARRANGEMENTS

- Piano Solo, in "Book of 7 Melodies" .75
- Piano Solo, arr. by B. Whelpley .50
- Piano Solo, arr. by Marschal-Loepke (simplified) .40
- Piano Four-Hands, arr. by Brower-Whelpley .60
- Two Pianos Four-Hands, arr. by Hull-Howe .50
- Piano Six-Hands, arr. by B. Treharne .50
- Organ Solo, arr. by R. Goss-Custard .60
- Harp (with organ *ad lib.*), arr. by A. F. Pinto .75
- Violin and Piano, arr. by Kreisler .75
- Violin and Piano, arr. by G. Strube .60
- Violin and Piano (simplified), arr. by P. Th. Miersch .60
- Violoncello and Piano .60
- Trio, Violin, Cello and Piano, arr. by Hugo Riesenfeld .75
- Cornet and Piano, arr. by H. G. Blaisdell .60
- C Melody Saxophone and Piano. Trans. by J. Gurewich .75
- E♭ (Alto) Saxophone and Piano. Trans. by J. Gurewich .75
- Orchestra (Cornet Solo), arr. by G. Strube 1.00
- Song Orchestration (E♭, D♭, or B♭) 1.00
- Band (Cornet Solo) 1.00
- Ukulele, arr. by C. S. De Lano .50
- Steel Guitar, arr. by C. S. De Lano .60
- Mandolin and Piano .50
- 2 Mandolins and Piano .70
- Mandolin and Guitar .40
- 2 Mandolins and Guitar .70
- Mandolin Orchestra, arr. by H. F. Odell:
  - 1st Mandolin .20
  - 2nd Mandolin .20
  - 3rd Mandolin .20
  - Tenor-Mandola .20
  - Mando-Cello .20
  - Mando-Bass .20
  - Banjo Obbligato .20
  - Guitar Accompaniment .20
  - Piano Accompaniment .30
  - Flute .20
  - Violoncello .20
- Trombone and Piano, arr. by M. Alloo .60
- Guitar Solo .40
- Flute and Piano .60
- Piano Accordion, arr. by Pietro Deiro .50
- Accordion Solo, arr. by Galla-Rini .50

THE BOSTON MUSIC COMPANY: BOSTON: MASSACHUSETTS





# THE ROSARY

## LE ROSAIRE DER ROSENKRANZ

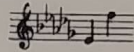
ROBERT CAMERON ROGERS

French version by Mme. C. Eschig

German version by Carl Engel

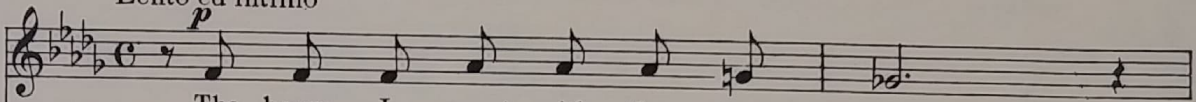
(Soprano or Tenor in D<sup>b</sup>)

ETHELBERT NEVIN



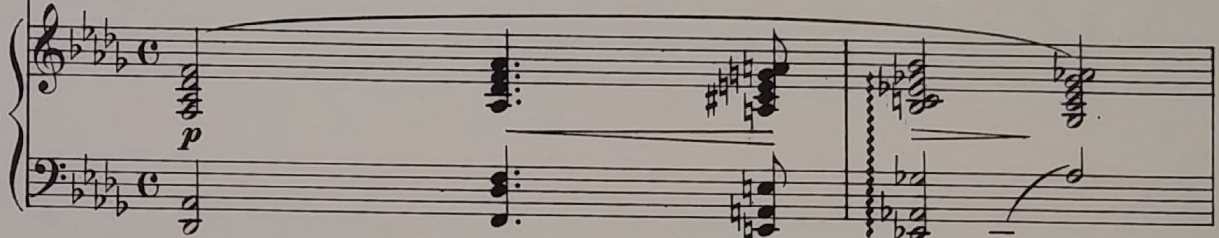
Lento ed intimo

VOICE

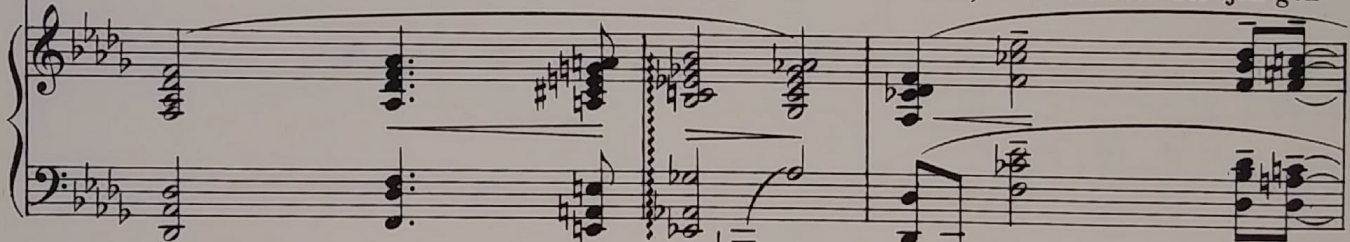


The hours I spent with thee, dear heart  
Comme un ro - sai - re sont pour moi  
Oft denk' mit Weh - mut ich zu - rück

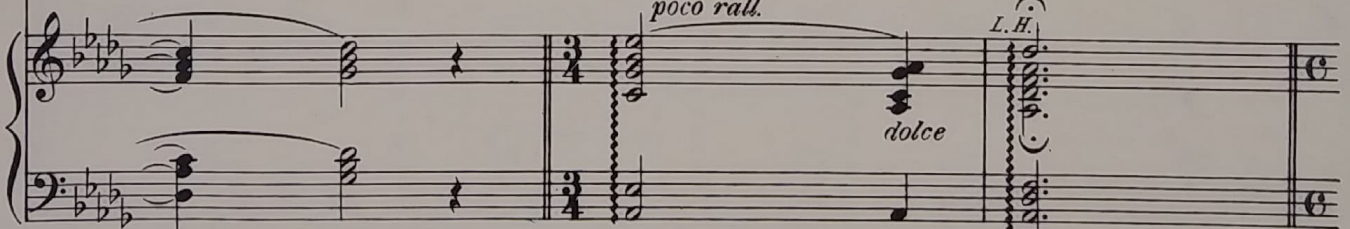
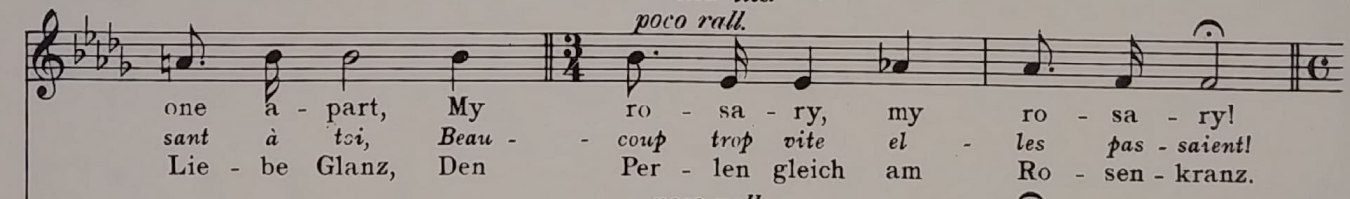
PIANO



Are as a string of pearls to me; I count them o-ver ev-'ry  
Les heu-res qui nous u - nis - saient, Tou-jours je les comp-te pen -  
Der hol-den Stun-den, reich an Glück, Die, strah-lend in der jun-gen



one a - part, My ro - sa - ry, my ro - sa - ry!  
sant à tsi, Beau - - coup trop vite el - les pas - saient!  
Lie - be Glanz, Den Per - len gleich am Ro - sen - kranz.



Copyright, 1898, by G. Schirmer, Jr.

For all countries  
Depositado conforme a la ley de Republica Mexicana  
en el año 1912 por The Boston Music Company.

B. M. Co. 807 C

Printed in U. S. A.

When performing and programming this number on the air, kindly give credit to THE BOSTON MUSIC COMPANY

*a tempo*  
*mp*

Each hour a pearl, each pearl a pray'r  
U - ne pri - ère à cha - que grain  
Wie sie, so reiht der Stun - den Zahl,  
To still a heart in ab - sence  
Pour cal - mer mon coeur aux a -  
Ein lich - ter Kranz, sich je - des -

*a tempo*  
*mp*

*ped. ped. \**

*molto largamente*

wrung:  
bois,  
mal

I tell each bead un to the end, And there a  
Jar - rive ain - si jus - qu'à la fin, Mais là pend  
Zur Ket - te von Ge - be - ten fromm... Bis ich zum

*molto largamente*  
*dolce*

*ped. ped. \**

*f* *a tempo* *p*

cross is hung! O mem - o - ries that bless and  
u - ne croix! O doux mo - ments si pleins d'é -  
Kreu - ze komm! Im Geist ent - schwund' - ner Se - lig -

*a tempo*  
*f*  
*quasi arpeggio*  
*p vibrato*  
*p. dolcissimo*  
*ped. \**



burn! O bar-ren gain and bit-ter loss!  
 moi, A vous tou-jours je dois pen-ser,  
 keit Küss' ich sie all, in stum-mem Leid,

*patetico*

*p.* *ped.* \* *ped.* \* *ped.* \* \* *ped.* \* *ped.* \*

*mf sempre cresc.* *f*

I kiss each bead, and strive at last to learn To kiss the  
 Jem-bras-se cha-que grain jus-qu'à la croix, Tô-chant d'ap-  
 Bis end-lich mir der Schmerz der letz-ten Stund' Drängt, O Ge-

*mf sempre cresc.* *f*

*ped.* \* *ped.* \*

*f poco accel.* *ff* *Largo* *pp*

cross, sweet-heart! To kiss the cross.  
 prendre en-fin à l'em-bras-ser.  
 lieb-ter, das Kreuz zum Mund.

*poco accel.* *f* *ff* *pp*

*ped.* \* *ped.* \* *ped.* \*

# OTHER NOTABLE COMPOSITIONS

## By ETHELBERT NEVIN



"Nevin's songs have lyrical contour, lyrical impulses; they come forward in graceful curves like waves, and when they reach their destination, they rise to their climax and make a beautiful end. . . . If you feel in a man's work a quality, which you can only define by making an adjective of his name, then his work has that individuality without which no genius—however infinite his pains—could hold his own through the rush of time. Yes, I think we may call Ethelbert Nevin a great composer of great songs."

—RUPERT HUGHES—

### Nevin Songs

|   |
|---|
| Deep in a Rose's Glowing Heart<br><i>with acc. of piano, violin and 'cello</i><br><i>High, A; Medium, G</i> .60<br><i>with piano acc., same keys</i> .50                                  |
| One Spring Morning (Frühlingsmorgen)<br><i>with acc. of piano, violin and 'cello</i><br><i>High, Em.; Medium, Dm. (c. &amp; g.)</i> .75<br><i>with piano acc., same keys</i> .75          |
| Doris<br><i>with acc. of piano, violin and 'cello</i><br><i>High, F; Medium, Eb</i> .90<br><i>with piano acc. High, F; Medium D (c. &amp; g.)</i> .60                                     |
| Little Boy Blue<br><i>High, Bb; Medium, Ab</i> .60  |
| At Twilight<br><i>High, G; Medium, F</i> .60  |
| Time Enough (Rechte Zeit)<br><i>High, Bb; Medium, Ab; Low, Gb (c. &amp; g.)</i> .50   |
| A Life Lesson ("There, little girl, don't cry")<br><i>High, Bb; Medium, G</i> .60   |
| O That We Two Were Maying<br><i>with piano acc. High, A; Low, F</i> .60<br><i>duet with piano acc. Sop. and Tenor, Ab</i><br><i>Sop. and Alto, Ab</i><br><i>Alto and Bass, F Each</i> .75 |
| Narcissus<br><i>voice and piano High, Ab; Low, F</i> .60  |

### Organ Editions

|   |               |
|---|---------------|
| Love Song (Arr. by Edward Shippen Barnes)   | .60           |
| Slumber Song (Arr. by E. H. Lemare)         | .60           |
| At Twilight (Arr. by A. H. Ryder)           | .60           |
| Ophelia (Arr. by P. J. Mansfield)           | .60           |
| Narcissus (Arr. by R. Goss-Custard)         | .60           |
| A Shepherd's Tale (Arr. by P. J. Mansfield) | .60           |
| Misericordia (Arr. by P. J. Mansfield)      | .60           |
| The Rosary (Arr. by R. Goss-Custard)        | .60           |
| Wedding Prelude and Intermezzo              | .60           |
| Organ Folio (9 pieces)                      | Complete 1.00 |

### Nevin Piano Pieces

|  |                   |      |
|--|-------------------|------|
| SKETCH BOOK (Songs and Piano Pieces)       | Complete          | 1.25 |
| 1. Gavotte                                 |                   | .50  |
| 2. Love Song                               |                   | .50  |
| 3. Berceuse                                |                   | .50  |
| 4. Serenata                                |                   | .60  |
| 5. Valse Rhapsodie                         |                   | .60  |
| WATER SCENES                               | Complete          | 1.25 |
| 1. Dragon Fly                              |                   | .60  |
| 2. Ophelia                                 |                   | .60  |
| 3. Water Nymph                             |                   | .60  |
| 4. Narcissus                               |                   | .60  |
| 5. Barcarolle                              |                   | .75  |
| IN ARCADY                                  | Complete          | 1.25 |
| 1. A Shepherd's Tale                       |                   | .60  |
| 2. Shepherds All and Maidens Fair          |                   | .75  |
| 3. Lullabye                                |                   | .60  |
| 4. Tournament                              |                   | .75  |
| MAY IN TUSCANY (Maggio in Toscano)         | Complete          | 1.25 |
| 1. Arlecchino                              |                   | .60  |
| 2. Notturmo (in Boccaccio's Villa)         |                   | .75  |
| 3. Barchetta                               |                   | .60  |
| 4. Misericordia                            |                   | .60  |
| 5. Il Rusignuolo (In My Neighbor's Garden) |                   | .75  |
| 6. La Pastorella (Montepiano)              |                   | .60  |
| MELODIES (Transcriptions)                  | Complete          | 1.25 |
| 1. One Spring Morning                      | 2. At Twilight    |      |
| 3. Tell Me ( <i>Dites-moi</i> )            | 4. The Rosary     |      |
| 5. Time Enough ( <i>Rechte Zeit</i> )      | 6. The Merry Lark |      |
| 7. Oh, That We Two Were Maying!            |                   |      |
| EGYPTIAN LOVE SONG                         |                   | .60  |

### Violin and Piano

|  |     |
|--|-----|
| Love Song                                      | .60 |
| Autumn   | .60 |
| Melody   | .60 |
| Habanera                                       | .75 |
| Narcissus (Arr. by G. Strube)                  | .60 |
| Narcissus (Simplified arr. by A. Moffat)       | .60 |
| Barcarolle                                     | .75 |
| Lullabye                                       | .60 |
| Romance (Transcr. by C. Engel)                 | .75 |
| Slumber Song (op. posth.)                      | .60 |
| The Rosary (Arr. by Fritz Kreisler)            | .75 |
| The Rosary (Arr. by G. Strube)                 | .60 |
| The Rosary (Simplified arr. by P. Th. Miersch) | .60 |

### Orchestra Editions

|                              |   |                       |  |                       |
|------------------------------|---|-----------------------|--|-----------------------|
| POPULAR CONCERT              |   |                       |  |                       |
| Library Number               |   |                       |  |                       |
| 1. O That We Two Were Maying | } | Small<br>Orch.<br>.80 |  |                       |
| 7. Country Dance             |   |                       |  |                       |
| 8. In Arcady                 |   |                       |  |                       |
| 9. Narcissus                 |   |                       |  |                       |
| 11. Romance                  |   |                       |  |                       |
| 12. Barchetta                |   |                       |  |                       |
| 32. Love Song                |   |                       |  |                       |
| Song of Love                 |   |                       |  |                       |
| 52. The Old Mill             |   |                       |  |                       |
|                              |   |                       |  | Full<br>Orch.<br>1.10 |

The Boston Music Company - Boston, Mass.