


man
& Tins

Conc
Brow
Boards
Hauens
Wagner
Hals

Thematic Music  Cue Sheet

M. J. MINTZ (PATENT)
JULY 31, 1923.

LON CHANEY
in
TOD BROWNING'S
Production
WHERE EAST IS EAST

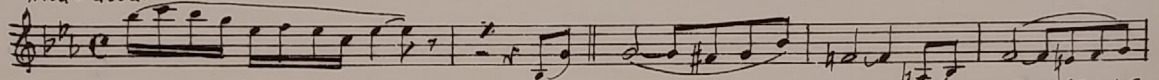


with
LUPE VELEZ and ESTELLE TAYLOR
Story by Tod Browning and Harry Sinclair Drago
Adaptation by Waldemar Young
Continuity by Richard Schayer
Directed by Tod Browning
Compiled by Ernst Luz



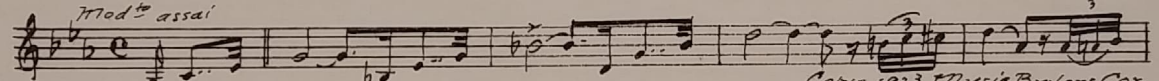
A METRO-GOLDWYN-MAYER PICTURE

Length of film 7 reels (6120 feet) Maximum projection time 1 hour, 12 minutes
1 AT SCREENING By the Japanese Sea (Hauenschild) 1 Min.

Mod^o assai

Copyr. 1923 Photo Play Music Co

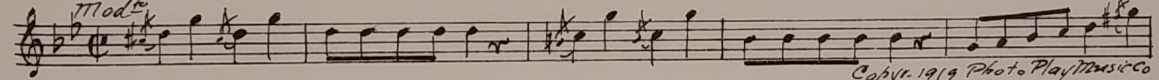
2 (Title) THE JUNGLE OF LAOS Tragic Parting (Hauenschild) 1 1/4 Min.

Tragic

Mod^o assai

Copyr. 1923 Music Buyers Cor.

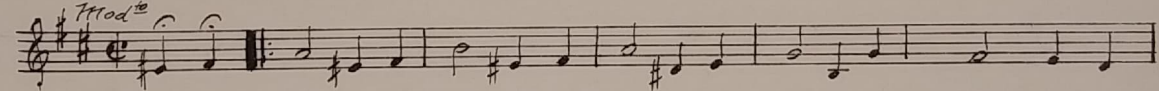
3 (Title) FAR SOUTH Mandarin Dance (Kempinski) 3/4 Min.

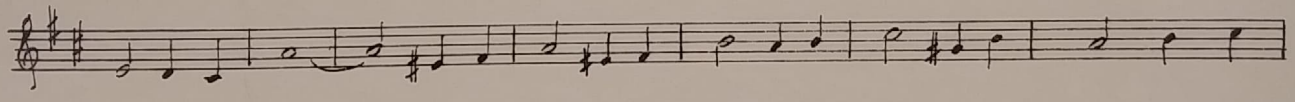
LO

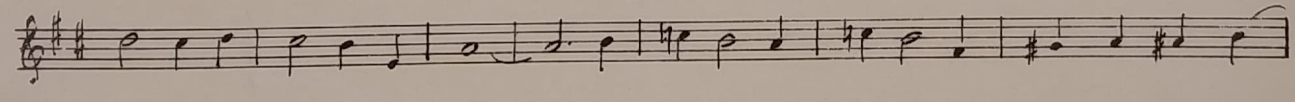
Mod^{to}

Copyr. 1919 Photo Play Music Co

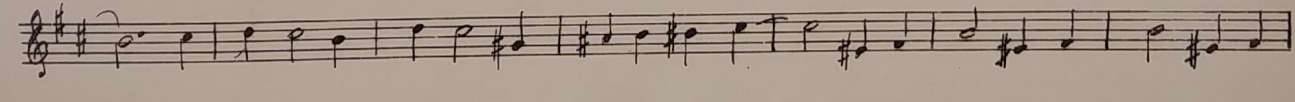
4 (Title) SEE BOBBY China Rose (Sloane) (WHITE) (Chorus only) 1/2 Min.

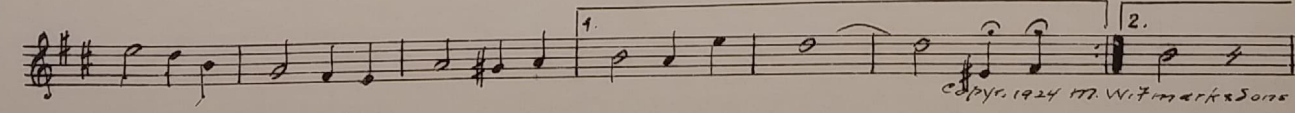
LT

Mod^{to}


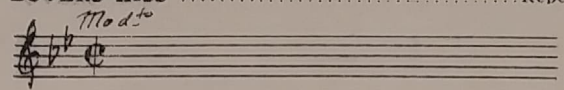




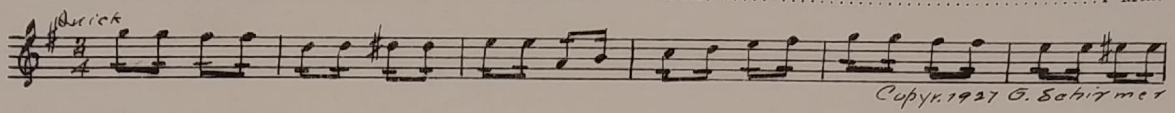



Copyr. 1924 W. W. Markers Sons

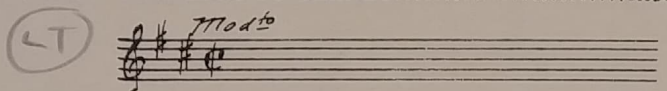
5 (Action) **LOVERS KISS** Repeat No. 3 "Mandarin Dance"..... 3/4 Min.



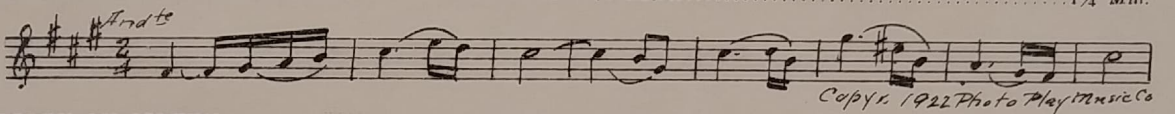
6 (Action) **CHANEY IN HOUSE**..... Effervescence (Wolf) 1 Min.



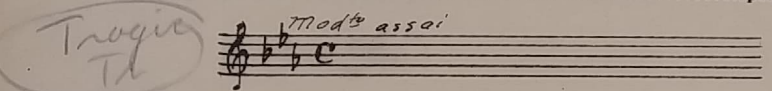
7 (Action) **GIRL RUNS TO CHANEY**..... Repeat No. 4 (WHITE) (Chorus only)..... 1 Min.



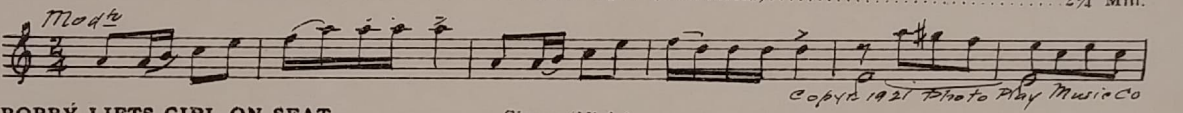
8 (Action) **GIRL CONFESSES HER LOVE**..... Nettuno (Viola)..... 1/4 Min.



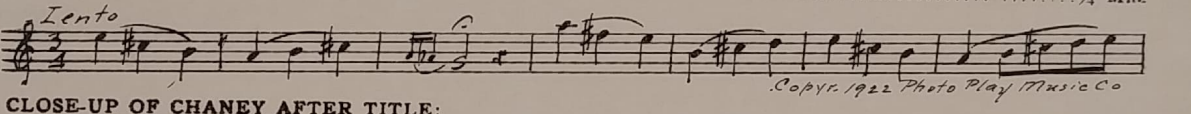
9 (Action) **BOBBY ON SCREEN**..... Repeat No. 2 "Tragic Parting"..... 1/4 Min.



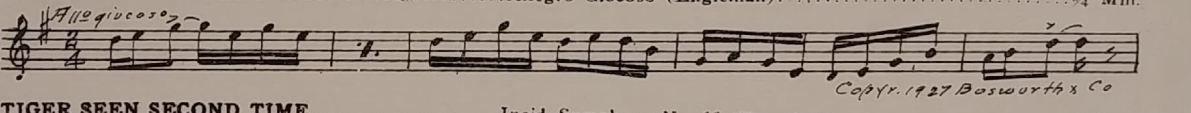
10 (Title) **WELL, I DON'T LIKE HIM**..... Almond Eyes (Schoenfeld)..... 2/4 Min.



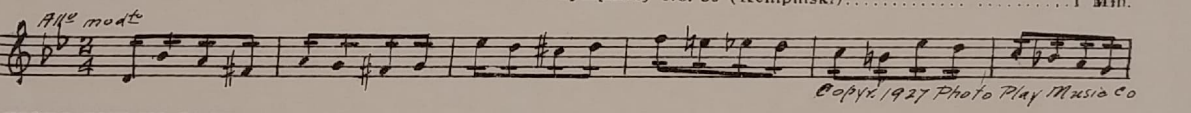
11 (Action) **BOBBY LIFTS GIRL ON SEAT**..... Sirene (Viola) 3/4 Min.



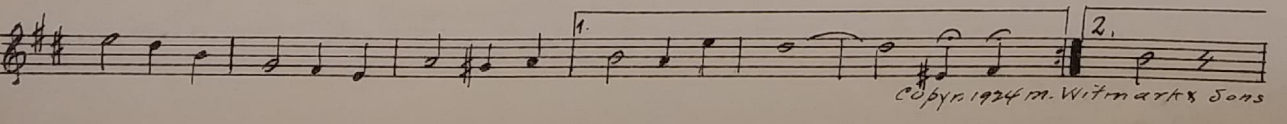
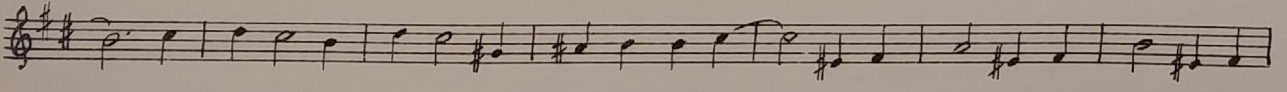
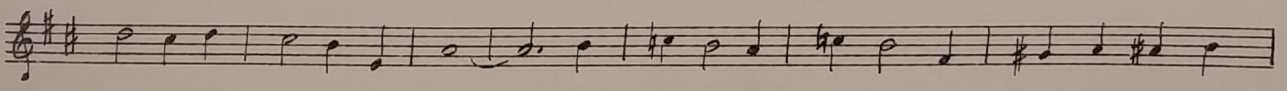
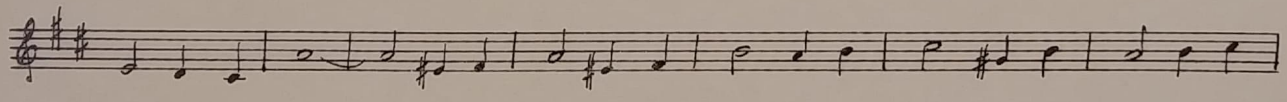
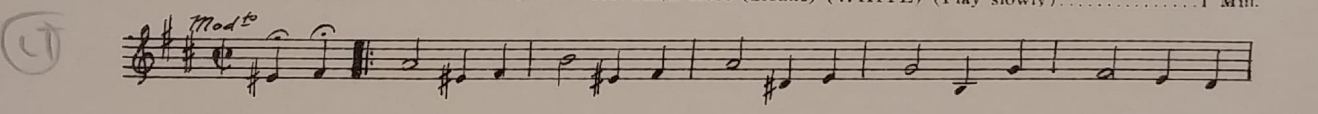
12 (Action) **CLOSE-UP OF CHANEY AFTER TITLE: "DAY AFTER DAY"**..... Allegro Giocoso (Engleman)..... 3/4 Min.



13 (Action) **TIGER SEEN SECOND TIME**..... Incid. Symphony No. 35 (Kempinski)..... 1 Min.



14 (Action) **TIGER PUT IN CAGE**..... China Rose (Sloane) (WHITE) (Play slowly)..... 1 Min.



15 (Action) STEAMBOAT WHISTLE BLOWS Repeat No. 12 "Allegro Giocoso" (Steamboat whistle)..... 1/4 Min.

All^o giocoso

16 (Action) BOBBY (LOVER) ON DECK Queen of the Night from "Babylon" (ELIE) (LT. GREEN) . . . 3 Min.

Allegro

Copyr. 1925 Carl Fischer

17 (Title) WHEN THE DYING Omens (Schad) 1 1/2 Min

All^o mod^{to}

Copyr. 1925 G. Schirmer

18 (Title) MADAME DE SYLVA Tragic Parting (Hauenschild) 1/2 Min.

Mod^{to} assai

Copyr. 1923 Music Buyers Co.

19 (Title) I'M SORRY HE ACTED THAT WAY Japanese Sunset (Deppen) 1/4 Min.

Fox Trot

Copyr. 1923 Sam Fox

20 (Action) SERVANT WALKS DOWNSTAIRS Repeat No. 18 "Tragic Parting" 1/4 Min.

Mod^{to} assai

21 (Action) WOMAN AND BOBBY SEEN Repeat No. 19 "Japanese Sunset" 1 Min.

Fox Trot

22 (Title) DRIFTING HOURS Repeat No. 16 (LT. GREEN) 2 1/4 Min.

Allegro

23 (Title) YOU WILL NOT COME TO THE CABIN Repeat No. 18 "Tragic Parting" 2 1/2 Min.

Mod^{to} assai

24 (Title) NOW YOU PUT AN END TO THIS Queen of the Night from "Babylon" (ELIE) (LT. GREEN) 1/4 Min.

Allegro

Copyr. 1925 Carl Fischer

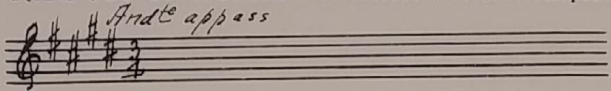
25 (Title) YOU ARE SURE Love's Emotion (Marquardt) 1/2 Min.

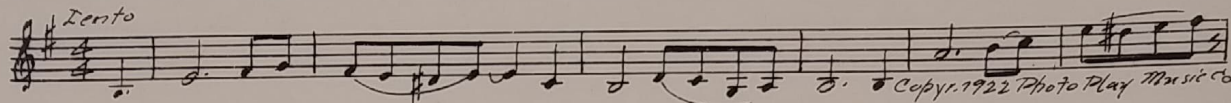
And^{te} appass.

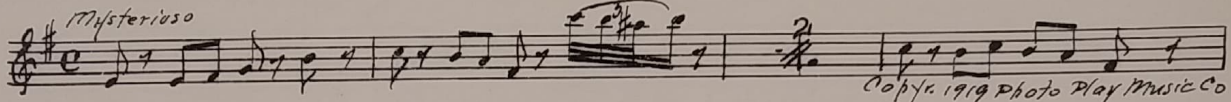
Copyr. 1928 Music Buyers Corp.

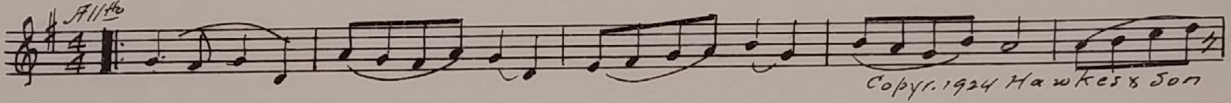
26 (Title) YOU KNOW THERE'S SOMETHING MORE Repeat No. 24 (LT. GREEN) 1/2 Min.

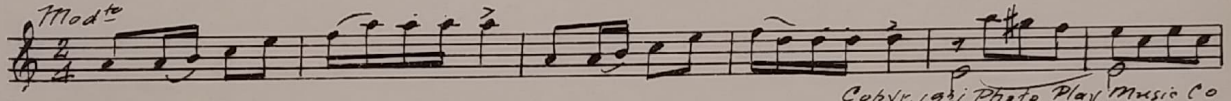
Allegro

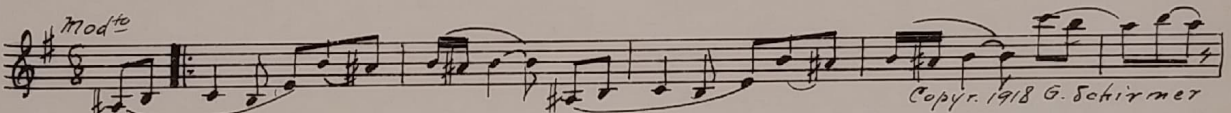
- 27 (Action) **FADE-OUT OF WOMAN** Repeat No. 25 "Love's Emotion" 2¼ Min.
Andte appassion


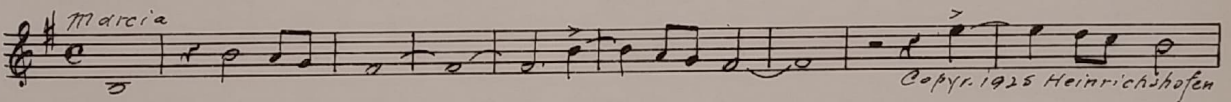
- 28 (Title) **SHE RAN AWAY FROM US** Sibelia Dream (Viola) 1 Min.
Lento


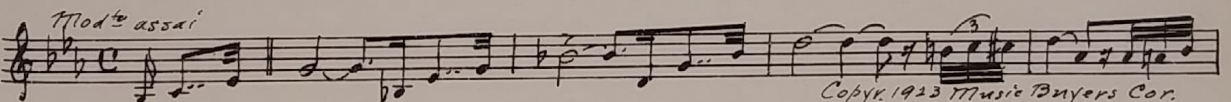
- 29 (Action) **FLASH FROM IUNGLE TO BOAT CABIN** Descriptive Mysterioso (Schoenfeld) ¾ Min.
Mysterioso


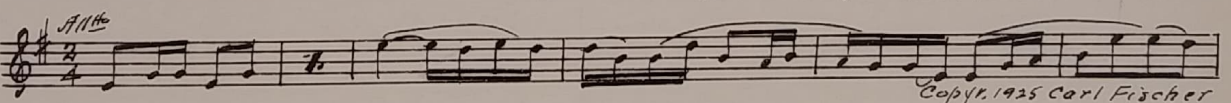
- 30 (Action) **LONG SHOT OF SHIP IN DISTANCE** Smiles (Somerville) 1 Min.
Allto


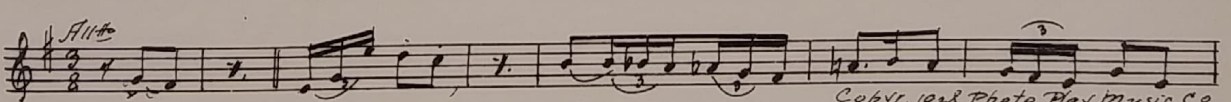
- 31 (Action) **FADE-OUT OF CHANEY AND BOBBY TO CHINESE GOD** Almond Eyes (Schoenfeld) 2 Min.
Modto


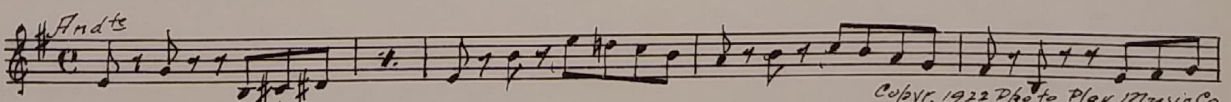
- 32 (Title) **MY HEART IS SO HAPPY** Misterioso Irresoluto (Langey) 1¼ Min.
Modto


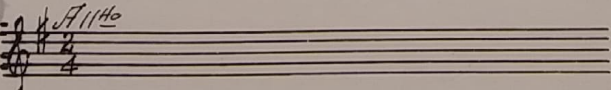
- 33 (Action) **CHANEY MOTIONS WOMAN TO LEAVE** Sorrow (Macat) 2¼ Min.
Marcia


- 34 (Action) **GIRL RUNS OFF WITH LOVER** Tragic Parting (Hauenschild) 1½ Min.
Modto assai


- 35 (Title) **YES, GORILLAS NEVER FORGET** Queen of the Night from "Babylon" (Elic) (LT. GREEN) ¾ Min.
Allto


- 36 (Title) **TIGER'S STRANGELY SECLUDED HOME** Morisca (Costa) 1¼ Min.
Allto


- 37 (Action) **GIRL AND BOBBY SEE MOTHER** Incid. Symphony No. 12 (Kempinski) 1¾ Min.
Andte


- 38 (Action) **FADE-OUT OF CHANEY AFTER TITLE: "WE ARE SO HAPPY"** Repeat No. 35 (LT. GREEN) 1¾ Min.
Allto


Trag
Tul

Vamp

Vamp

39. (Title) **I KNOW, YOU ARE BLUSHING** China Rose (Sloane) (WHITE) (Play slowly).....1¼ Min.

LT

Modto

Copyright 1924 Witmark & Sons

(Action) **RESTAURANT SCENE** Dramatic Love Scene (Axt)1 Min.

Allo appassion.

Copyright 1926 Robbins Music Corp.

Title) **TONIGHT, I TAKE MORE MESSAGE** Repeat No. 35 (LT, GREEN).....1¼ Min.

LT

Allto

(Action) **BOY KISSES MOTHER** Repeat No. 39 (WHITE) (Play slowly)1 Min.

Modto

(Action) **DAUGHTER ON SCREEN WITH CHANEY** Effervescence (Wolf)1¼ Min.

Quick

Copyright 1947 G. Schirmer

DAUGHTER PUTS HANDS OVER EYES Sibelia Dream (Viola)1 Min.

Lento

Copyright 1922 Photo Play Music Co

FADE-CUT OF LOVERS A Mysterious Episode (Engleman)¾ Min.

Allo non troppo

Copyright 1926 Bosworth & Co

BOAT WHISTLE ON SCREEN Tragic Parting (Hauenschild) (Boat-whistle).....1 Min.

Modto assai

Copyright 1923 Music Buyers Cor.

47 (Title) **AND YOU'RE GETTING OUT** Agitated Misterioso (Rapee)1 Min.

Agitato

Copyright 1926 Belwin Inc.

48 (Action) DAUGHTER AT DOOR SCREAMSGrand Appassionato (Becca)1 1/4 Min.

Andte deciso

 Belwin Inc.

49 (Title) MY MOTHERRecitativo No. 1 (Rapee-Axt).....1 Min.

Modto

 Copyr. 1924 Robbins Music Co.

50 (Action) GIRL SEES BOBBY IN GARDENChina Rose (Sloane) (WHITE) (Play slowly)2 1/4 Min.

LT
Modto

 Copyr. 1924 M. Witmark & Sons

51 (Title) I AM WAITING FOR YOURepeat No. 46 "Tragic Parting"1 Min.

Light
Modto assai

52 (Action) LOVERS KISS PASSIONATELYIncid. Symphony No. 35 (Kempinski)1 1/4 Min

All modto

 Copyr. 1927 Photo Play Music

53 (Action) CHINESE WOMAN WORSHIPPING IDOL.....China Rose (Sloane) (WHITE) (Slow and pathetic).....1

LT
Modto

 Copyr. 1924 M. Witmark & Sons

54 (Title) I WILL BE WITH YOU ALWAYSContinue No. 531 Min.

LT
Modto

NOTE: Play lively to end—ship whistle blows.
THE END

Proper orchestral rest period is Nos. 23 to 33 inclusive.
 NOTE: The repetition of numbers in this cue sheet is simplified by the use of the "LUZ" SYMPHONIC COLOR GUIDE, sold by Music Buyers Corporation, 1520 Broadway, New York City. The color suggested for repetition of numbers designates the Mood or Emotion, and is used as a code for such repetitions.
 Country of Origin, U. S. A.

Complete orchestrations and single piano parts of each separate number contained hereon, can be purchased from CAMEO MUSIC SERVICE CORPORATION, 315-317 WEST 47TH STREET, NEW YORK CITY