

M. J. MINTZ (PATENT)
JULY 31, 1923.

THE WIND

starring

LILLIAN GISH

with

LARS HANSON

A VICTOR SEASTROM PRODUCTION

Scenario by Frances Marion

From the novel by Dorothy Scarborough

Directed by Victor Seastrom

Compiled by Ernst Luz

A METRO-GOLDWYN-MAYER PICTURE

Length of film 7 reels (6465 feet)

Maximum projection time 1 hour, 14 minutes



1 AT SCREENING

A.B.C. Dram. Set No. 20-A1 (Old) (Luz)..... ¾ Min.

Upbeat

All. Mod.º

Copy. 1916 Photo Play Music Co.

2 (Action) - PLAY ONCE AND SEGUE

Incid. Miniatures No. 8 (Hauenschild) ¾ Min.

And.º Mod.º

Copy. 1915 Photo Play Music Co.

3 (Title) - THIS IS THE STORY

Comedy Excitement (Zamecnik) 1 Min.

All.º

Copy. 1927 Sam Fox Pub.

4 (Action) MAN GETTING GLASS OF WATER

Continue No. 3 with wind effect ½ Min.

All.º

5 (Action) MAN CLOSSES CAR WINDOW

Miss Mischief (Kempinski) 1¼ Min.

Mod.º Capricioso

Copy. 1927 Photo Play Music Co.

6 (Action) GIRL HAS APPLE

Repeat No. 1 "A.B.C. Dram. Set No. 20-A1" ¼ Min.

All.º Mod.º

7 (Title) INJUNS CALL THIS

The Spectre (Engleman) (Wind effect) ¾ Min.

And.º mosso

Copy. 1927 Bosworth & Co.

8 (Action) CONDUCTOR COMES INTO CAR

Symphonic Incidentals No. 2 (Marquardt) (Wind-Shot) 2½ Min.

All.º vivo

Copy. 1927 Music Buyers Corp.

Upbeat

Comedy

Upbeat

allegro

9 (Action) STOP WITH SHOT AFTER TITLE: "WE'LL SHOOT" Repeat No. 3 "Comedy Excitement" 1 Min.

Comedy

All^o

10 (Action) FADE-OUT AFTER TITLE: "I SEEN THAT GALLOOT BEFORE" Galloping Furies (Ranee) (Wind) 2 Min.

Presto furioso

11 (Title) AFTER ENDLESS MILES Breath of Morn (Kempinski) 1 Min.

And^{te} con moto *Molto lento*

12 (Title) I'D HAVE SENT FOR YOU SOONER Incid. Miniatures No. 8 (Hauenschild) 1/4 Min.

And^{te} mod^{to}

13 (Action) TWO MEN ENTER HOUSE A.B.C. Dram. Set No. 20-C3 (Old) (Luz) 1 Min.

Polka tempo

14 (Action) MAN MAKES BAD FACE AT BAD TASTE IN MOUTH Repeat No. 1 or tacet (Wind) 1/4 Min.

Wind

All^o

15 (Action) AFTER ONE WINDOW SCENE A.B.C. Dram. Set No. 20-B2 (Old) (Luz) 1 Min.

And^{te} mol^{to}

16 (Action) LILLIAN GISH ABOUT TO DRINK Repeat No. 1 or tacet (Wind) 1/4 Min.

Wind

All^o

17 (Action) FADE-OUT OF EXTERIOR Dance of the Sylphes (Marquardt) 1 Min.

Tempo di Valse

18 (Action) CHILDREN SIT ON LILLIAN GISH'S LAP Lonely Hours (Kempinski) 1 Min.

And^{te}

19 (Action) FADE-OUT OF WOMAN WITH KNIFE Bits of Old Time Hits Nos. 1 and 2 (Reeg) 3/4 Min.

Take Hall High Jay

ff

20 (Action) END OF DANCE—LILLIAN GISH SITS DOWN. Poppy Love Theme (Luz) 1/4 Min.

(L)

And^{te}

21 (Action) ORCHESTRA PLAYS Over the Waves (Rosas) 1 Min.

Musical notation for "Over the Waves (Rosas)", marked *Valse*. Copyright: Emil Ascher.

22 (Action) STOP WITH SHOT Repeat No. 20 "Poppy Love Theme" 1 Min.

LT

Musical notation for "Poppy Love Theme", marked *And^{te}*.

23 (Action) LILLIAN GISH SEES HERSELF IN MIRROR... Symphonic Incidentals No. 2 (Marquardt) 1 Min.

Musical notation for "Symphonic Incidentals No. 2 (Marquardt)", marked *All^o vivo*. Copyright: 1927 Music Buyers Corp.

24 (Action) BELL FALLS THROUGH ROOF Repeat No. 20 "Poppy Love Theme" 1/4 Min.

LT

Musical notation for "Poppy Love Theme", marked *And^{te}*.

25 (Action) LIGE RUNS DOWN STAIRS TO WOMEN IN CELLAR Artist's Life (Strauss) 1 1/4 Min.

Musical notation for "Artist's Life (Strauss)", marked *Valse*. Copyright: 1913 Carl Fischer.

26 (Action) WIFE KISSES HUSBAND The Butterflies Wedding (Marcelle) 1 1/2 Min.

Musical notation for "The Butterflies Wedding (Marcelle)", marked *All^o mod^{er}ate*. Copyright: 1934 Gould & Bottler.

27 (Action) LILLIAN GISH BEGINS TO LAUGH AFTER THROWING RING Pantomime (Waldteufel) 1/2 Min.

Musical notation for "Pantomime (Waldteufel)", marked *Waltz*. Copyright: Emil Ascher.

28 (Title) AND FOR A MOMENT I THOUGHT THEY WERE SERIOUS Lonely Hours (Kempinski) 1 1/2 Min.

Musical notation for "Lonely Hours (Kempinski)", marked *And^{te}*. Copyright: Photo Play Music.

29 (Action) WIFE THROWS LILLIAN GISH FROM HUSBAND A.B.C. Dram. Set No. 20-A1 (Old) (Luz) 1/2 Min.

allied to

Musical notation for "A.B.C. Dram. Set No. 20-A1 (Old) (Luz)", marked *All^o mod^{er}ate*. Copyright: 1916 Photo Play Music.

30 (Action) AFTER EXTERIOR WIND SCENE Symphonic Incidentals No. 6 (Marquardt) 2 Min.

Musical notation for "Symphonic Incidentals No. 6 (Marquardt)", marked *And^{te} con gravita*. Copyright: 1927 Music Buyers Corp.

31 (Action) LETTY WALKS OUT OF ROOM—MAN WALKS TO WINDOW The Spectre (Engleman) 1/4 Min.

allied to

Musical notation for "The Spectre (Engleman)", marked *And^{te} mosso*. Copyright: 1927 Bosworth & Co.

32 (Action) FADE-OUT OF MAN AT WINDOW Repeat No. 28 "Lonely Hours" 3/4 Min.

Musical notation for "Lonely Hours (Kempinski)", marked *And^{te}*.

"Wind"

33 (Action) FADE-OUT AFTER TITLE: "TWO MEN WANT TO MARRY YOU" Norma Waltzes (Luz) 1 Min.

Waltz

Copyright 1917 Photo Play Music Co.

34 (Action) MAN RIDES AWAY FROM DOOR ON HORSEBACK Incid. Miniatures No. 8 (Hauenschild) 2 Min.

And^{te} mod^{to}

Copyright 1925 Photo Play Music Co.

35 (Action) PLAY ONCE THROUGH AND SEGUE You and I (Lottor) 2 Min.

And^{te} con espr.

Copyright 1925 Hawkes & Son.

36 (Title) NOTE: Wind effect after husband pours coffee. LEMME GET YOU SOME MORE Mystic Romance (Srawley) 1 1/2 Min.

Slow & dramatic

Copyright 1925 G. Schirmer.

37 (Action) NOTE: Wind effect at feet on floor. FEET ON FLOOR STOP WALKING WHERE CUP LIES Defiant Love (Schad) 3/4 Min.

All^o appassion.

Copyright 1925 G. Schirmer.

38 (Action) LILLIAN GISH STOPS RESENTING KISS Repeat No. 34 "Incid. Miniatures No. 8" 2 Min.

And^{te} mod^{to}

39 (Action) HUSBAND LEAVES ROOM Repeat No. 29 "A.B.C. Dram. Set No. 20-A1" 1/4 Min.

All^o mod^{to}

40 (Action) NOTE: Wind effect. AFTER ONE WIND SCENE A.B.C. Dram. Set No. 20-C3 (Old) (Luz) 1 Min.

Polka

Copyright 1916 Photo Play Music Co.

41 (Action) HUSBAND ENTERS HOUSE Incid. Miniatures No. 8 (Hauenschild) 1/2 Min.

And^{te} mod^{to}

Copyright 1925 Photo Play Music Co.

42 (Title) TAKE ME WITH YOU, LIGE Repeat No. 29 "A.B.C. Dram. Set No. 20-A1" 2/3 Min.

All^o mod^{to}

43 (Action) PLAY TWICE AND SEGUE-FADE-OUT AS HUSBAND AND WIFE RIDE OFF Galloping Furies (Rapee) 1 1/4 Min.

Presto Curioso

Copyright 1926 Belwin Inc.

44 (Action) FADE-OUT AS HORSE JUMPS ON HIND LEGS Joe Bowers (Voice alone) 1/2 Min.

Mod^{to}

Copyright Manus Music Co.

"Wind"

45 (Action) **MAN WALKS TO WINDOW** A.B.C. Dram. Set No. 20-B2 (Old) (Luz)..... 1½ Min.

Handwritten: *Wind*
Musical notation for item 45. Treble clef, key signature of one sharp (F#), common time. Tempo: *And^{te} molto*. Includes a *lento* marking. Copyright: 1916 Photo Play Music Co.

46 (Title) **SOMEONE'S HURT** A.B.C. Dram. Set No. 20-A1 (Old) (Luz) ½ Min.

Handwritten: *Wind*
Musical notation for item 46. Treble clef, key signature of one sharp (F#), 2/4 time. Tempo: *All^o mod^{to}*. Copyright: 1916 Photo Play Music Co.

47 (Action) **BODY CARRIED INTO ROOM** Repeat No. 45 "A.B.C. Dram. Set No. 20-B2" 1½ Min.

Handwritten: *Wind*
Musical notation for item 47. Treble clef, key signature of one sharp (F#), common time. Tempo: *And^{te} molto*.

48 (Action) **INJURED MAN PUTS HAND OVER FACE**.....The Spectre (Engleman) 1 Min.

Handwritten: *Wind*
Musical notation for item 48. Treble clef, key signature of one sharp (F#), common time. Tempo: *And^{te} mosso*. Copyright: 1927 Bosworth & Co.

49 (Action) **MAN LOOKING THROUGH STEREOPTICON**..Spring Fancies (Marquardt) 1 Min.

Handwritten: *Wind*
Musical notation for item 49. Treble clef, key signature of one sharp (F#), 2/4 time. Tempo: *Mod^{to}*. Copyright: 1925 Music Buyers Corp.

50 (Title) **WEREN'T YOU AFRAID?** Repeat No. 48 "The Spectre" ¾ Min.

Handwritten: *Wind*
Musical notation for item 50. Treble clef, key signature of one sharp (F#), common time. Tempo: *And^{te} mosso*.

51 (Action) **WOMAN LIGHTS LIGHT** Repeat No. 46 "A.B.C. Dram. Set No. 20-A1" 1 Min.

Handwritten: *Wind*
Musical notation for item 51. Treble clef, key signature of one sharp (F#), 2/4 time. Tempo: *All^o mod^{to}*.

52 (Action) **HUSBAND ENTERS ROOM** A.B.C. Dram. Set No. 20-B2 (Old) (Luz) 1 Min.

Handwritten: *Wind*
Musical notation for item 52. Treble clef, key signature of one sharp (F#), common time. Tempo: *And^{te} molto*. Copyright: 1916 Photo Play Music Co.

53 (Action) **STOP WITH WIND EFFECT AS DOOR OPENS**. Repeat No. 46 "A.B.C. Dram. Set No. 20-A1" 1 Min.

Handwritten: *Wind*
Musical notation for item 53. Treble clef, key signature of one sharp (F#), 2/4 time. Tempo: *All^o mod^{to}*.

54 (Action) **FADE-OUT OF GIRL AT DOOR** Galloping Furies (Rapee) ¾ Min.

Handwritten: *Wind*
Musical notation for item 54. Treble clef, key signature of one sharp (F#), 6/8 time. Tempo: *Presto Furioso*. Copyright: 1926 Belwin Inc.

55 (Action) **LILLIAN GISH SEEN IN ROOM** Fugitive (Maiorana) (Odd wind) 2¼ Min.

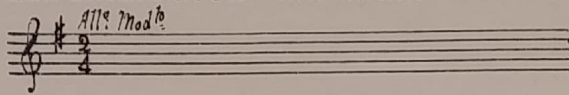
Handwritten: *Wind*
Musical notation for item 55. Treble clef, key signature of one sharp (F#), common time. Tempo: *Speedily*. Copyright: 1926 Geo. H. Sanders.

56 (Action) **LILLIAN GISH PUTS OUT LIGHT—
ROOM MOVES** Repeat No. 50 "The Spectre" 1¼ Min.

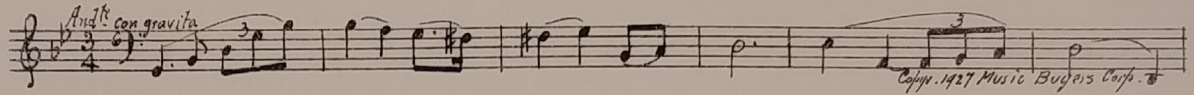
Handwritten: *Wind*
Musical notation for item 56. Treble clef, key signature of one sharp (F#), common time. Tempo: *And^{te} mosso*.

57. (Action) MAN ENTERS ROOM Repeat No. 46 "A.B.C. Dram. Set No. 20-A1" 2¼ Min.

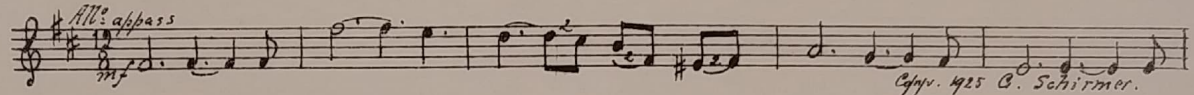
Wind



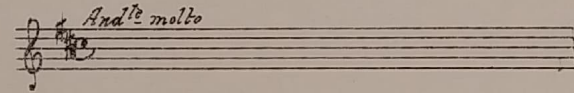
58 (Action) FADE-OUT OF WHITE HORSE AS LILLIAN GISH IS SEEN LYING ON BED Symphonic Incidentals No. 6 (Marquardt) 2¼ Min.



59 (Title) I HOPE HE WILL Defiant Love (Schad) 1 Min.

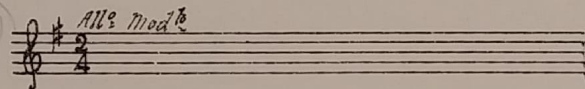


60 (Action) STOP SHORT AT SHOT Repeat No. 52 "A.B.C. Dram. Set No. 20-B2" 1 Min.



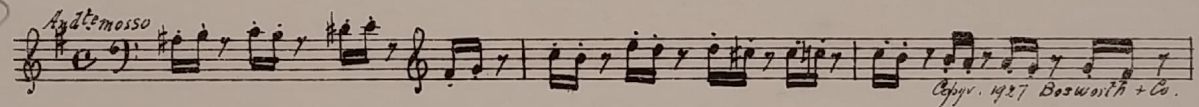
61 (Action) LILLIAN GISH GOES OUT THROUGH DOOR. NOTE: Wind effect as Lillian Gish is seen at door. Repeat No. 46 "A.B.C. Dram. Set No. 20-A1" ½ Min.

Wind



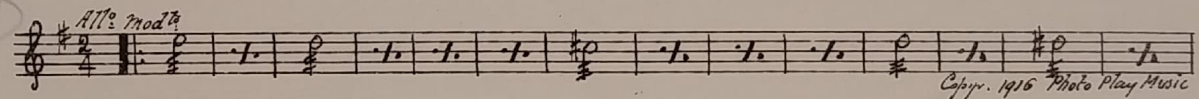
62 (Action) LILLIAN GISH RE-ENTERS HOUSE The Spectre (Engleman) ½ Min.

Allegro



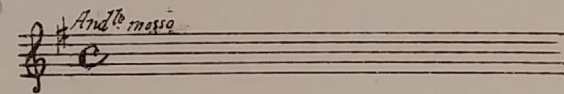
63 (Action) MAN'S FACE SEEN IN SAND A.B.C. Dram. Set No. 20-A1 (Luz) 1¼ Min.

Wind

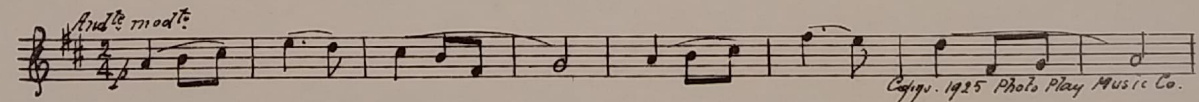


64 (Title) LIGE I'VE KILLED Repeat No. 62 "The Spectre" ¾ Min.

Allegro

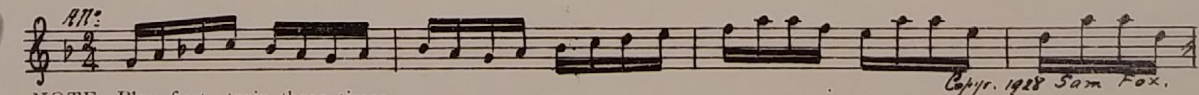


65 (Action) LIGE WALKS FROM DOOR Incid. Miniatures No. 8 (Hauenschild) 1 Min.



66 (Action) LOVERS KISS Comedy Excitement (Zamecnik) ¾ Min.

Comedy In



NOTE: Play first strain three times.

THE END

Proper orchestral rest period is Nos. 28 to 40 inclusive.
Country of Origin, U. S. A.

Complete orchestrations and single piano parts of each separate number contained hereon, can be purchased from CAMEO MUSIC SERVICE CORPORATION, 315-317 WEST 47TH STREET, NEW YORK CITY.