

7 m.



M. J. MINTZ (PATENT)
JULY 31, 1913.

William Le Baron
presents
"THE WOMAN I LOVE"

A Bernarr Macfadden True Story Picture
taken from True Story Magazine

featuring
NORMAN KERRY
Margaret Morris and Robert Frazer

Directed by George Melford

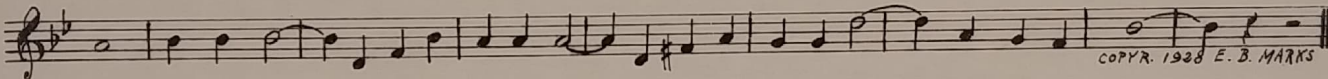
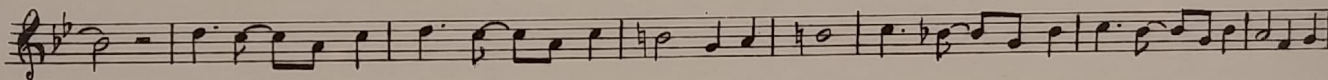
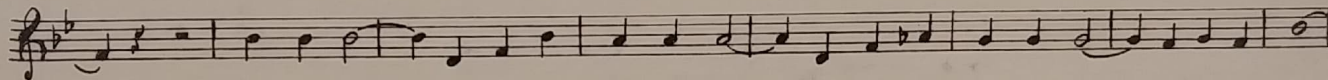
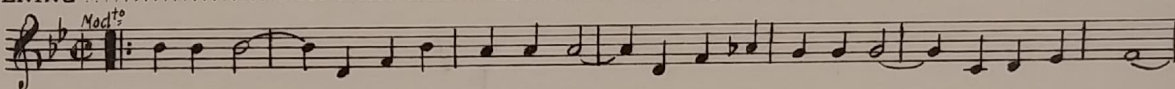
Compiled by James C. Bradford

Distributed by

F B O Pictures Corporation

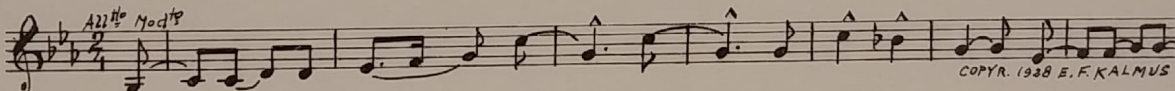
1 AT SCREENING LOVE THEME: Sunny Skies (Gilbert) 3/4 Min.

LT



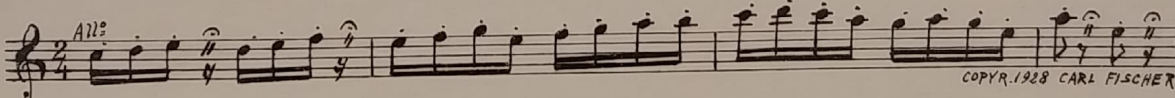
COPYR. 1928 E. B. MARKS

2 (Action) BIRD IN CAGE Old Song (Borch) 1 1/2 Min.



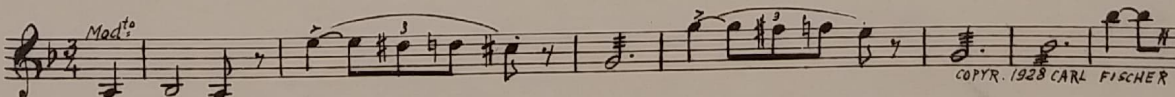
COPYR. 1928 E. F. KALMUS

3 (Action) INSERT - "NEW YEAR'S EVE" The Acrobatic Flivver (Lake) 3/4 Min.



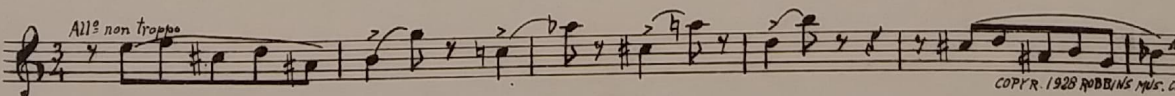
COPYR. 1928 CARL FISCHER

4 (Title) SEE HERE JOHN REED Him and Her (Lake) 2 1/4 Min.



COPYR. 1928 CARL FISCHER

5 (Title) WHAT'S THE MATTER DEAR Impression Frivole (Bradford) 3 Min.



COPYR. 1928 ROBBINS MUS. CO.

6 (Title) I DON'T THINK I SHOULD GO EDNA THEME: Amorous Adventure (Bradford) 1/2 Min.

Edna Theme

Musical notation for item 6, starting with the tempo marking *Tranquillo*.

Musical notation for item 6, second line.

Musical notation for item 6, third line.

Musical notation for item 6, fourth line, ending with the copyright notice: *COPYR. 1928 SONNEMANN MUSIC CO.*

7 (Action) CAFE SCENE La Rosita (Dupont) 1 3/4 Min.

Musical notation for item 7, starting with the tempo marking *Tango*.

COPYR. 1922 SAM FOX

8 (Action) FADE-IN HAND ON LEDGER Elegy (Sommer) 1 Min.

Musical notation for item 8, starting with the tempo marking *Grave funebre*.

COPYR. 1925 HEINRICHSHOFEN

9 (Action) FLASH TO CAFE AND DANCING Don't Do That to the Poor Puss-Cat (Sarony) 1/2 Min.

Musical notation for item 9, starting with the tempo marking *Molto*.

COPYR. 1928 E. B. MARKS

10 (Title) A NEW DAY AND A NEW NUMBER HAMILTON THEME: Marche Mignonne (Poldini) 2 1/2 Min.

Hamilton Theme

Musical notation for item 10, starting with the tempo marking *Leggiero*.

COPYR. 1920 G. SCHIRMER

11 (Action) DIAL OF CLOCK Aubade Printaniere (Lacombe) 2 3/4 Min.

Musical notation for item 11, starting with the tempo marking *All^o*.

COPYR. CARL FISCHER

12 (Title) BY THE WAY MARTIN, WHAT DAY IS THIS? Repeat Hamilton Theme No. 10 1 3/4 Min.

Hamilton

Musical notation for item 12, starting with the tempo marking *Leggiero*.

13 (Action) MRS. PARKER APPEARS IN ROOM Intermezzo (Granados) 2 3/4 Min.

Musical notation for item 13, starting with the tempo marking *Lento espress.*

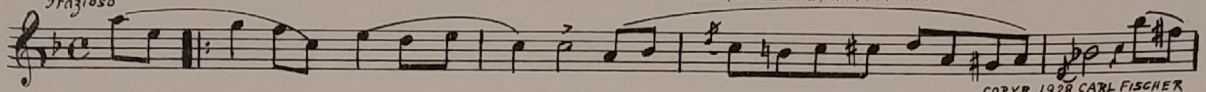
COPYR. G. SCHIRMER

14 (Action) KEN OFFERS MRS. PARKER DRINK Appassionato Romantico (Bradford) 2 1/4 Min.

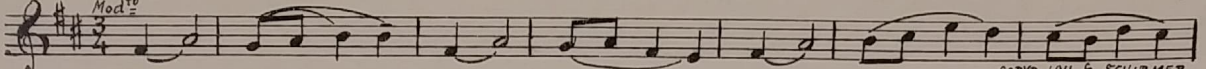
Musical notation for item 14, starting with the tempo marking *All^o Agitato*.

COPYR. 1920 CARL FISCHER

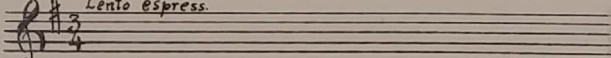
15 (Action) JOHN ENTERS APARTMENT The Prim Little Miss (Bradford) 1¼ Min.

f *ra* *g* *z* *io*  COPYR. 1928 CARL FISCHER

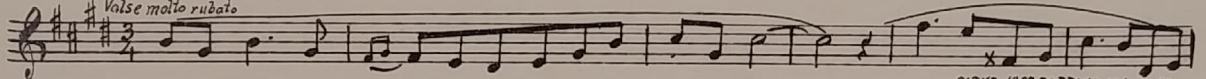
16 (Title) WHY JOHN, WHAT BRINGS YOU HOME Serenade (Chaminade) 2 Min.

Mod^{to}  COPYR. 1911 S. SCHIRMER

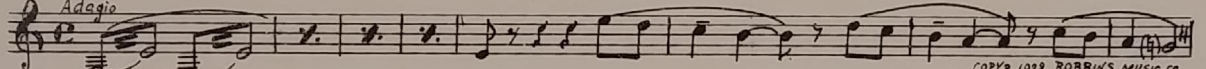
17 (Action) MRS. PALMER AT DOOR Repeat No. 13 "Intermezzo" ½ Min.

Lento espress. 

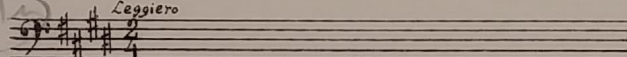
18 (Action) JOHN ENTERS WITH COCKTAILS Valse Mimi (Axt) ½ Min.

Valse molto rubato  COPYR. 1927 ROBBINS MUSIC CO.

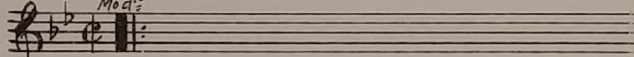
19 (Action) BOY APPEARS WITH BOX OF FLOWERS Lamento (Berge) 2 Min.

Adagio  COPYR. 1923 ROBBINS MUSIC CO.

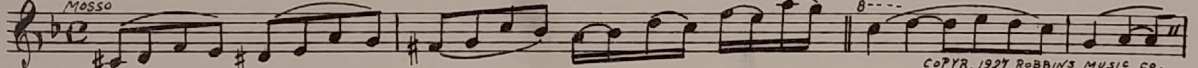
20 (Action) HAMILTON LEAVES ELEVATOR Repeat Hamilton Theme No. 10 2 Min.

Hamilton *Leggiero* 

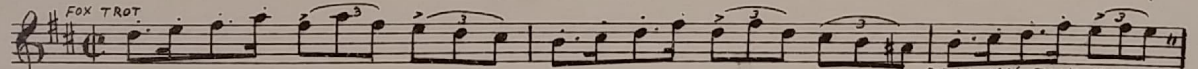
21 (Action) INSERT — TELEGRAM Repeat Love Theme No. 1 ½ Min.

LT *Mod^{to}* 

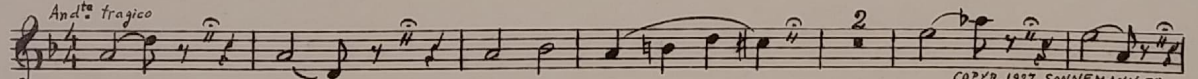
22 (Title) I'M SORRY MR. HAMILTON Prelude-Largamente (Savino) ¾ Min.

Mosso  COPYR. 1927 ROBBINS MUSIC CO.

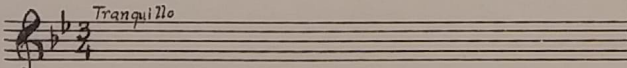
23 (Title) THE THURSDAY EXPRESS Flapperette (Greer) 1 Min.

FOX TROT  COPYR. 1936 JACK MILLS, INC.

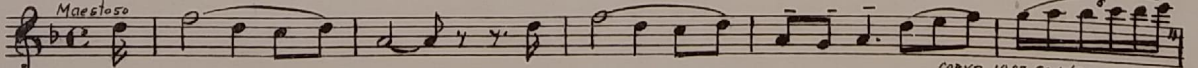
24 (Action) JOHN OPENS HAMILTON'S SATCHEL Camorra (Joels) 2 Min.

NOTE: Train effects ad lib. *And^{to} tragico*  COPYR. 1927 SONNEMANN CO.

25 (Action) EDNA SETTING TABLE Repeat Edna Theme No. 6 1¾ Min.

Edna Tr *Tranquillo* 

26 (Action) JOHN APPEARS Day of Doom (Joels) 1½ Min.

Maestoso  COPYR. 1927 SONNEMANN CO.

27 (Action) HAMILTON ENTERS APARTMENT Repeat Hamilton Theme No. 10..... 3/4 Min.

*Hamilton
Tn*

Leggiero

28 (Title) THAT'S ALL TONIGHT MARTIN After Midnight (Bradford) 3 3/4 Min.

Mod^{to} con mistero

COPYR. 1923 E. F. KALMUS

29 (Action) AFTER SHOTS ARE FIRED IN DARK ROOM... Finale (Jentsch) 3 3/4 Min.

NOTE: Produce pistol shot effect.

Maestoso

COPYR. 1925 Heinrichshafen

30 (Action) EDNA ENTERS MRS. PARKER'S ROOM Andante Cantabile (Tschaikowsky) 3 1/2 Min.

And^{te}

COPYR. 1900 CARL FISCHER

31 (Action) TWO GENTLEMEN ENTER Repeat Edna Theme No. 6 1 3/4 Min.

Edna Tn

Tranquillo

32 (Action) INSERT — "NEW SENSATION" Adagio Pathetique (Godard) 3/4 Min.

Adagio

COPYR. 1910 G. SCHIRMER

33 (Title) YOU SAY YOU WERE AT HAMILTON'S APARTMENT Prelude "Cyrano" (Damrosch) 2 1/2 Min.

Mod^{to}

COPYR. 1913 G. SCHIRMER

34 (Action) MRS. PARKER RISES FROM SEAT Adriana Lecouvreur (Cilea) 2 3/4 Min.

Senza lentezza

COPYR. 1903 Ed. SONZOGNO

35 (Title) I CAN TELL YOU WHO KILLED HAMILTON. Implorations of Neptune (Massenet) 2 3/4 Min.

Agitato

36 (Title) JOHN REED'S BULLET STRUCK ME Repeat Love Theme No. 1 1 1/2 Min.

LT

Mod^{to}

THE END

Printed in U. S. A.

Complete orchestrations and single piano parts of each separate number contained hereon, can be purchased from CAMEO MUSIC SERVICE CORPORATION, 315-317 WEST 47TH STREET, NEW YORK CITY