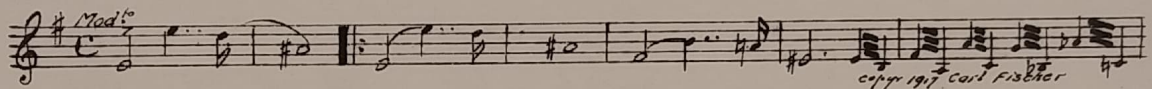


M. J. MINTZ (PATENT)
JULY 31, 1925

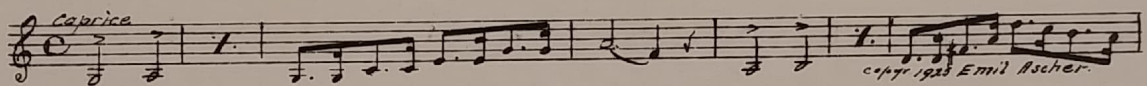
"THE WRECK OF THE HESPERUS"

with
 Virginia Bradford, Frank Marion, Alan Hale and Sam DeGrasse
 Suggested by Henry Wadsworth Longfellow's Famous Poem
 by Harry Carr and John Farrow
 Directed by Elmer Clifton
 Produced by DeMille Pictures Corporation
 Compiled by Rudolph Berliner
 Pathe Exchange, Inc.
 Distributor

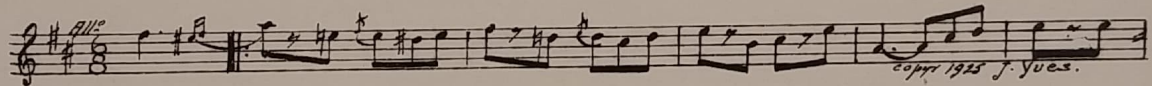
- 1 AT SCREENING Fourteen Fathoms Deep (Lake) 2½ Min.



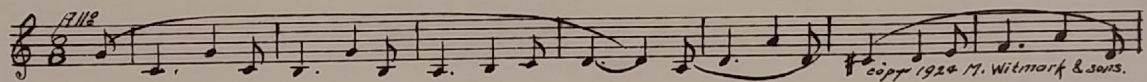
- 2 (Action) GIRL SEEN ON DECK White Swan (Stults) ¾ Min.



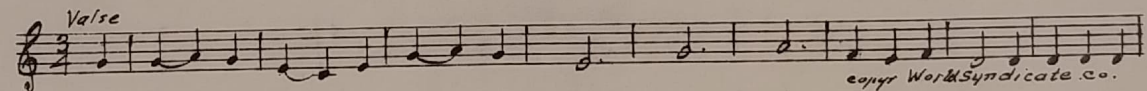
- 3 (Action) MONKEY IS SEEN My Little Billiken (Lotter) ¼ Min.



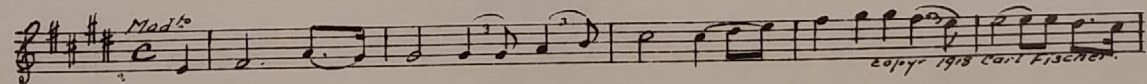
- 4 (Title) WE'RE ALMOST THERE Home to My Joy and Thee (Vanderpool) 1½ Min.



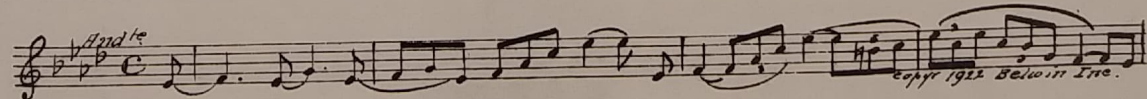
- 5 (Title) OH, THE CAPTAIN IS Blow the Man Down ½ Min.



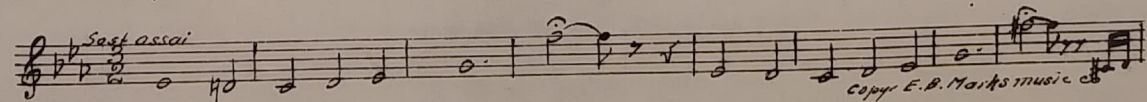
- 6 (Action) INSERT—PICTURE Melodie (Rachmaninoff) 1 Min.



- 7 (Title) THERE WAS REASON Love's Golden Arrows (Smith) 1 Min.



- 8 (Action) SILAS SEES BRIDE Abandoned (Leoncavallo) 1½ Min.



9 (Title) BACK TO THE Down to the Sea In Ships (Smith) 1½ Min.

Musical notation for item 9: Treble clef, 2/4 time, *And Mod^{to}*. Copyright 1924 Foster Music Co.

10 (Title) ONE LONE SURVIVOR Trembling Agitato (Kilenyi) 1½ Min.

Musical notation for item 10: Treble clef, 3/8 time, *All^o*. Copyright 1925 Belwin Inc.

11 (Title) LOOK, DADDY, LOOK! S-O-S (Herkan) 2½ Min.

Musical notation for item 11: Treble clef, 2/4 time, *All^o*. Copyright 1926 Sonnemann Music Co.

12 (Title) BY EVENING THE Starland (O'Connor) 1½ Min.

Musical notation for item 12: Treble clef, 2/4 time, *All^o*. Copyright Walter Jacobs.

13 (Title) YES SIR, NAMED Reproach (Zamecnik) 1½ Min.

Musical notation for item 13: Treble clef, 2/4 time, *Mod^{to}*. Copyright 1927 Sam Fox.

14 (Action) PIGTAIL JACK AND JOHN ON DECK Secret of the Sea (Zamecnik) 1 Min.

Musical notation for item 14: Treble clef, 2/4 time, *Mod^{to} Marcato*. Copyright 1911 Sam Fox Pub. Co.

15 (Title) WHENEVER ONE OF The Whistler and His Dog (Pryor) 1 Min.

Musical notation for item 15: Treble clef, 2/4 time, *All^o*. Copyright 1918 Carl Fischer.

16 (Action) JOHN ALONE ON DECK Repeat No. 2 "White Swan" ½ Min.

Musical notation for item 16: Treble clef, *Cantabile*.

17 (Action) GOAT AND DOG SEEN Repeat No. 15 "Whistler and His Dog" 1½ Min.

Musical notation for item 17: Treble clef, *All^o*.

18 (Action) JOHN SEEN ON DECK Alluring Coquetry (Baron) 2¼ Min.

Musical notation for item 18: Treble clef, 2/4 time, *All^o*. Copyright 1928 Belwin Inc.

19 (Title) HER MOTHER'S WEDDING VEIL Moments of Tenderness (Somerville) 1¼ Min.

Musical notation for item 19: Treble clef, 2/4 time, *Mod^{to}*. Copyright 1924 Hawkes & Son.

20 (Title) EVENING—A SHY MOON THEME: Liebestraum (Liszt) 3¼ Min.

Musical notation for item 20: Treble clef, 2/4 time, *All^o*. Copyright 1918 Walter Jacobs.

LT

NOTE: Omit cadenza

21 (Action) JOHN ENTERS CABIN Presse Timents (Fosse) 2 Min.

Musical notation for item 21, featuring a treble clef, a key signature of one sharp (F#), and a 2/4 time signature. The tempo marking is *Moderato*. The notation includes a series of eighth and sixteenth notes with some rests. A copyright notice "Copyright J. Fosse" is visible at the bottom right of the staff.

22 (Action) JOHN RETURNS TO GALE Repeat Theme No. 20 1 1/4 Min.

LT

Musical notation for item 22, showing a treble clef, a key signature of one sharp (F#), and a 2/4 time signature. The tempo marking is *All.* (Allegro). The staff contains a few notes and rests.

23 (Action) GALE ENTERS FATHER'S CABIN Twilight Hour (Savino) 1 1/4 Min.

Musical notation for item 23, featuring a treble clef, a key signature of one sharp (F#), and a 2/4 time signature. The tempo marking is *And. Mod.* (Andante Moderato). The notation consists of a series of quarter and eighth notes. A copyright notice "Copyright 1922 G. Savino" is at the bottom right.

24 (Title) IN PORT AND Dramatic Tension (Ancliffe) 1 Min.

Musical notation for item 24, featuring a treble clef, a key signature of one sharp (F#), and a 2/4 time signature. The tempo marking is *Mod.* (Moderato). The notation is a series of eighth notes. A copyright notice "Copyright 1926 Bosworth & Co." is at the bottom right.

25 (Title) TWILIGHT FOUND Twilight (Cesek) 1 1/4 Min.

Musical notation for item 25, featuring a treble clef, a key signature of one sharp (F#), and a 2/4 time signature. The tempo marking is *And. to* (Andante to). The notation includes a series of quarter notes and rests. A copyright notice "Copyright 1923 Carl Fischer" is at the bottom right.

26 (Action) SHIP SEEN The Flight (Savino) 1 1/4 Min.

Musical notation for item 26, featuring a treble clef, a key signature of one sharp (F#), and a 2/4 time signature. The tempo marking is *All. Mosso* (Allegro Mosso). The notation is a series of eighth notes. A copyright notice "Copyright 1927 Robbins Music Co." is at the bottom right.

27 (Title) SABBATH MORN Fugitive (Maiorana) 1 1/2 Min.

Musical notation for item 27, featuring a treble clef, a key signature of one sharp (F#), and a 2/4 time signature. The tempo marking is *Speedily*. The notation is a series of eighth notes. A copyright notice "Copyright 1926 Geo. H. Sanders Co." is at the bottom right.

28 (Title) THE GOOD FOLK HEAR Orchestra Tacet—Chime Solo 1/4 Min.

Musical notation for item 28, featuring a treble clef, a key signature of one sharp (F#), and a 2/4 time signature. The tempo marking is *Chime solo.* The notation shows a few notes and rests.

29 (Action) PEOPLE ENTER CHURCH Orchestra Tacet—"Come, Ye Disconsolate" (Webbe) (Organ Solo) 3/4 Min.

Musical notation for item 29, featuring a treble clef, a key signature of one sharp (F#), and a 2/4 time signature. The tempo marking is *Religioso*. The notation is a series of quarter notes. A copyright notice "Copyright 1901 Carl Fischer" is at the bottom right.

30 (Action) INSERT—HANDS Repeat Theme No. 20 2 1/2 Min.

LT

Musical notation for item 30, showing a treble clef, a key signature of one sharp (F#), and a 2/4 time signature. The tempo marking is *All.* (Allegro). The staff contains a few notes and rests.

31 (Title) SLOWLY DRAGGED THE Love and Laughter (Cobb) 1/2 Min.

Musical notation for item 31, featuring a treble clef, a key signature of one sharp (F#), and a 2/4 time signature. The tempo marking is *All. Mod.* (Allegro Moderato). The notation includes a series of eighth notes and rests. A copyright notice "Copyright 1922 Walter Jacobs" is at the bottom right.

32 (Action) SHIP SEEN Repeat No. 1 "Fourteen Fathoms Deep" 3/4 Min.

Musical notation for item 32, featuring a treble clef, a key signature of one sharp (F#), and a 2/4 time signature. The tempo marking is *Mod.* (Moderato). The staff contains a few notes and rests.

33 (Action) EXTERIOR—COTTAGE The Witching Hour (Felix) 2 Min.

And^{te} non troppo

 copyright 1926 American composers.

34 (Action) SILAS ARRIVES IN BUGGY Shadows In the Night (Borch) 1¼ Min.

All^o

 copyright 1944 Carl Fischer Inc.

NOTE: Stop short when Gale sees father.
 35 (Action) JOHN CLIMBING WALL Angosciosamente (Gabriel Marie) 2¾ Min.

All^o vivo

 copyright G. Ricordi.

NOTE: Play Allegro Moderato tempo; catch insert—Bell ringing.
 36 (Title) ALL HELL'S ABOUT Storm or Fire Music (Haines) 2 Min.

All^o con fuoco

 copyright 1923 Hawkes Son

37 (Title) THE HORROR OF SCREAMING Flying Dutchman (Wagner) 3¾ Min.

Vivo

 copyright Carl Fischer.

NOTE: Play to action—storm effects ad lib.
 38 (Title) HER FATHER SOUGHT Lost At Sea (Lazzari) 2¾ Min.

Tres Agitato

 copyright E.B. Marks Music Corp.

NOTE: Play to action—storm effects ad lib; catch insert—bell ringing.
 39 (Title) LIKE A SHEETED GHOST Hopeless (Neinass) 1¼ Min.

All^o

 copyright 1925 Heinrichs-Hofman.

40 (Action) JOHN SEES WRECK Furioso No. 1 (Rapee-Axt) 2½ Min.

All^o Molto

 copyright 1924 Robbins Music Corp.

NOTE: Play to action—play "P" when Gale is seen praying.
 41 (Action) GALE SEES JOHN Agitato Furioso No. 12 (Ketelbey) 2¾ Min.

All^o vivace

 copyright 1924 Bosworth Inc.

42 (Action) GALE AND JOHN LYING ON SHORE Miracle of Love (McKee) 1 Min.

Molto

 copyright 1917 G. Schirmer Inc.

43 (Action) FLASH-BACK TO GALE AND JOHN AFTER
 TITLE: "IT'S ALL RIGHT" Repeat Theme No. 20.

LT

All^o

THE END

Printed in U. S. A.

Complete orchestrations and single piano parts of each separate number contained hereon, can be purchased from CAMEO MUSIC SERVICE CORPORATION, 315-317 WEST 47TH STREET, NEW YORK CITY.