

*Fri*

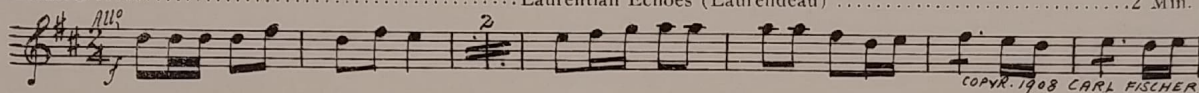
Thematic Music  Cue Sheet

M. J. MINTZ (PATENT)  
JULY 31, 1923.

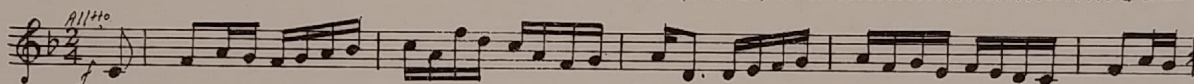
William Le Baron  
presents  
**JAMES OLIVER CURWOOD'S**  
**"THE YELLOW-BACK"**

with  
**Tom Moore**  
Directed by Jerome Storm  
Compiled by James C. Bradford  
Distributed by  
F B O Pictures Corporation

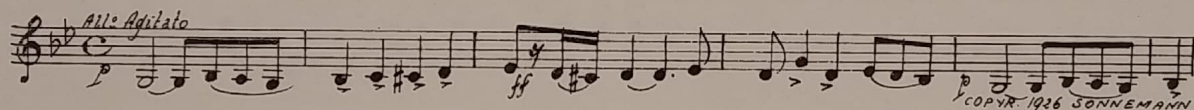
1 AT SCREENING ..... Laurentian Echoes (Laurendeau) ..... 2 Min.



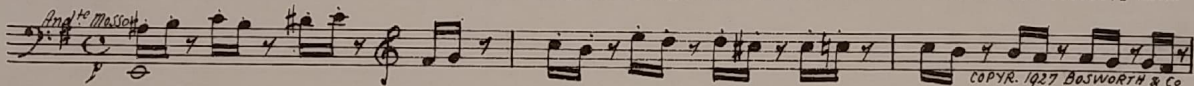
2 (Action) ELISE ENTERS ROOM ..... Circassian Circle (Beaulac) ..... 1 3/4 Min.



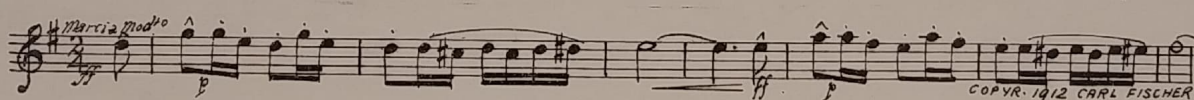
3 (Action) MAN GRABS ELISE ..... Ferocitv (Carrozzini) ..... 1 1/4 Min.



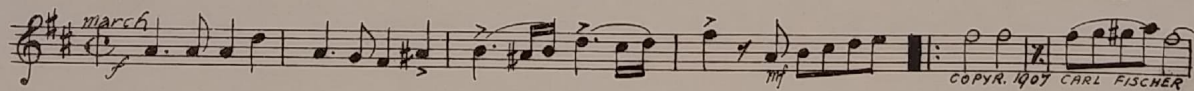
4 (Title) YOU'D BETTER GET AWAY ..... The Spectre (Engleman) ..... 1/2 Min.



5 (Action) O'MARA POLISHING SHOES ..... Bizzaria (Laurendeau) ..... 1 3/4 Min.

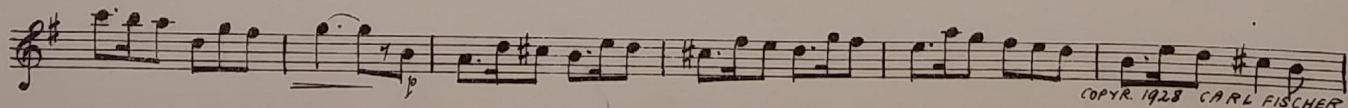
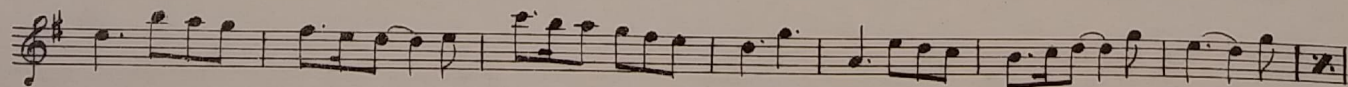
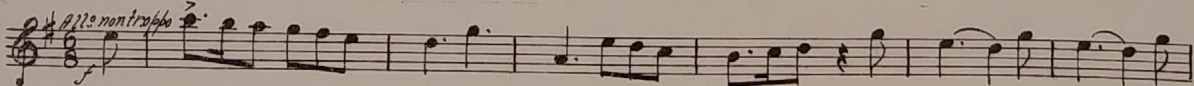


6 (Title) WE'VE LEARNED WHO KILLED ..... Carillon (Laurendeau) ..... 1/2 Min.



7 (Action) JULES EATING ..... JULES THEME: The Jovial Rogue (Bradford) ..... 1 1/2 Min.

*Jules Tr*







19 (Title) SOON THERE WERE TWO ..... Fingal's Cave (Mendelssohn) ..... 3 Min

*24 numbers*

*All<sup>o</sup> mod<sup>to</sup>*  
Handwritten musical notation for 'Soon There Were Two' in treble clef, 3/4 time, key of D major. The piece is marked 'All<sup>o</sup> mod<sup>to</sup>'.  
Copyr. 1915 Carl Fischer

20 (Action) INDIAN PLUNGES KNIFE ..... Prelude from First Suite "Carmen" (Bizet) ..... 1 Min.

*And<sup>te</sup> mod<sup>to</sup>*  
Handwritten musical notation for 'Indian Plunges Knife' in bass clef, 3/4 time, key of D major. The piece is marked 'And<sup>te</sup> mod<sup>to</sup>'.  
Copyr. 1914 Carl Fischer

21 (Title) M'SIEUR, YOU ARE ONE SMART MAN ..... LOVE THEME: Reverie d'Amour (D'Aquin) ..... 1 1/4 Min.

*LT*

*And<sup>ino</sup>*  
Handwritten musical notation for 'M'Sieur, You Are One Smart Man' in treble clef, 3/4 time, key of D major. The piece is marked 'And<sup>ino</sup>'.

Handwritten musical notation for 'M'Sieur, You Are One Smart Man' in treble clef, 3/4 time, key of D major.

Handwritten musical notation for 'M'Sieur, You Are One Smart Man' in treble clef, 3/4 time, key of D major.

Handwritten musical notation for 'M'Sieur, You Are One Smart Man' in treble clef, 3/4 time, key of D major.

Handwritten musical notation for 'M'Sieur, You Are One Smart Man' in treble clef, 3/4 time, key of D major.

Handwritten musical notation for 'M'Sieur, You Are One Smart Man' in treble clef, 3/4 time, key of D major.  
Copyr. 1925 Sonnemann Music Co

22 (Title) IT IS LUCKY FOR ME ..... Chatter (Kahn) ..... 2 1/2 Min.

*All<sup>o</sup>*  
Handwritten musical notation for 'It is Lucky for Me' in treble clef, 2/4 time, key of D major. The piece is marked 'All<sup>o</sup>'.  
Copyr. 1926 Sonnemann Music Co

23 (Action) O'MARA GOES TO SLEEP ..... Andante Mysterioso (Lake) ..... 2 3/4 Min.

*And<sup>te</sup>*  
Handwritten musical notation for 'O'Mara Goes to Sleep' in treble clef, 3/4 time, key of D major. The piece is marked 'And<sup>te</sup>'.  
Copyr. 1914 Carl Fischer

24 (Action) O'MARA FINALLY AWAKENS ..... Repeat No. 8 "Dramatic Allegro" ..... 1 Min.

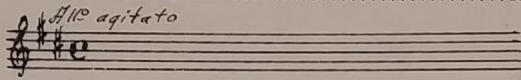
*Whore*

*All<sup>o</sup>*  
Handwritten musical notation for 'O'Mara Finally Awakens' in bass clef, 3/4 time, key of D major. The piece is marked 'All<sup>o</sup>'.

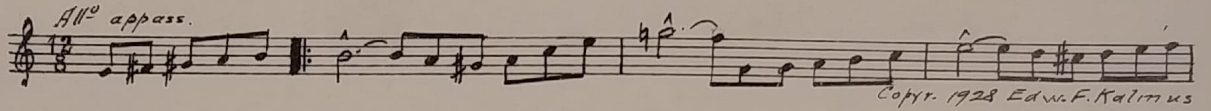
25 (Action) INSERT—"DEAD MAN'S LANDING" ..... La Canadienne (Tavan) ..... 1 1/4 Min.

*All<sup>o</sup> vivo*  
Handwritten musical notation for 'Dead Man's Landing' in treble clef, 2/4 time, key of D major. The piece is marked 'All<sup>o</sup> vivo'.  
Copyr. 1903 Carl Fischer

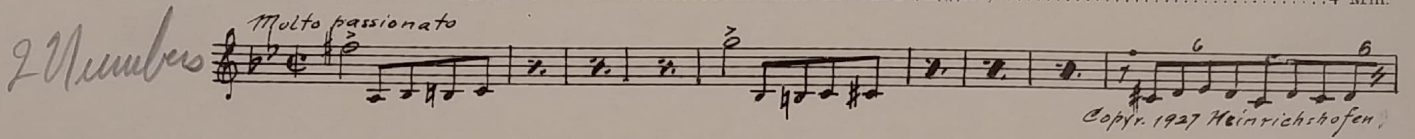
26 (Action) ELISE ENTERS ..... Repeat No. 10 "Intermezzo" ..... 2½ Min.



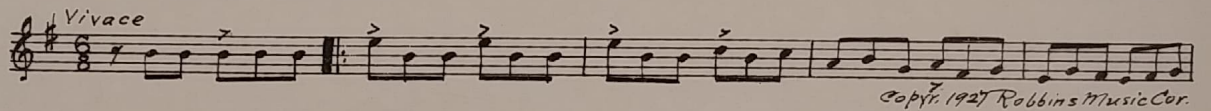
27 (Action) JULES GRABS HER ..... Vehement Desire (Bradford) ..... 3¼ Min.



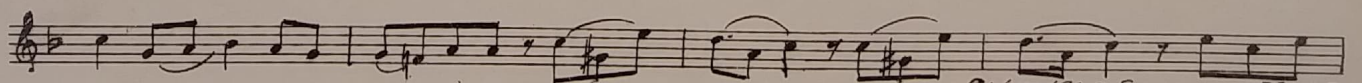
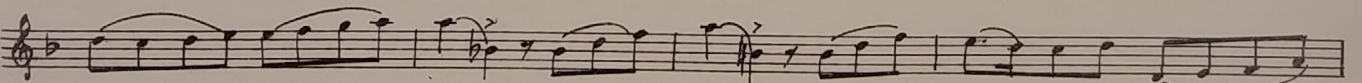
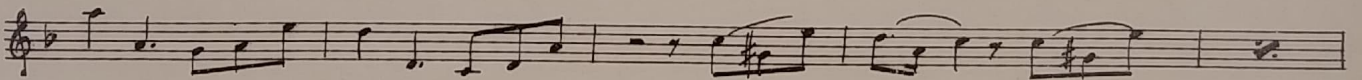
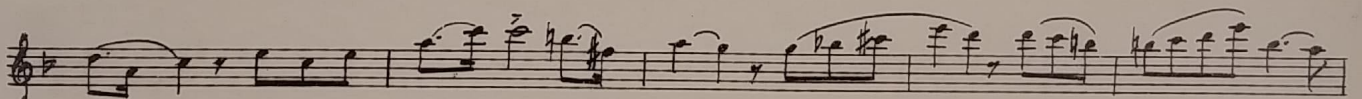
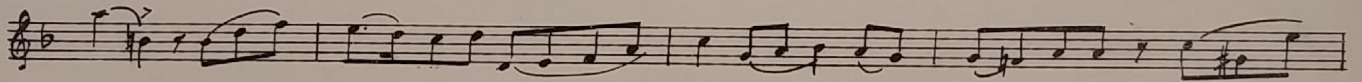
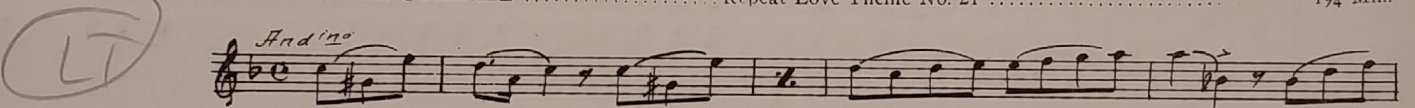
28 (Action) O'MARA CONFRONTS JULES ..... Elements Unbound (Eggert) ..... 4 Min.



29 (Action) JULES FALLS WRAPPED IN CURTAIN ..... Gigue (Bradford) ..... 1 Min.



30 (Title) I WILL NEVER QUARREL ..... Repeat Love Theme No. 21 ..... 1¾ Min.



Copyright 1925 Sonnemann Music Co

Printed in U. S. A.

THE END

Complete orchestrations and single piano parts of each separate number contained hereon, can be purchased from CAMEO MUSIC SERVICE CORPORATION, 315-317 WEST 47TH STREET, NEW YORK CITY.